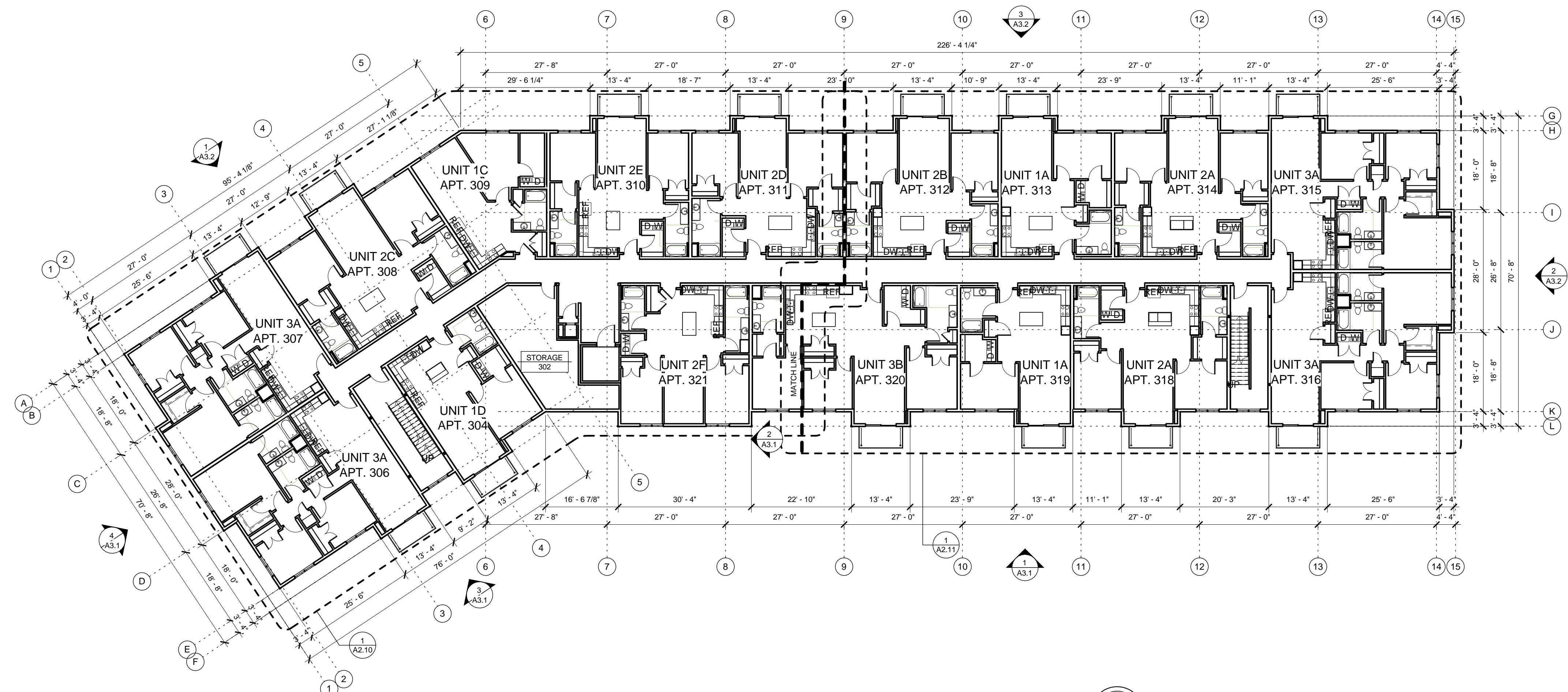
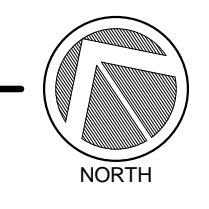
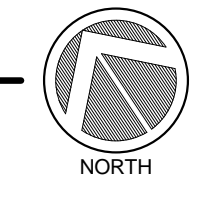


1 SECOND LEVEL FLOOR PLAN
 A2.2 SCALE: 1/16" = 1'-0"



2 THIRD LEVEL FLOOR PLAN
 A2.2 SCALE: 1/16" = 1'-0"



REVISIONNO.	DATE	DESCRIPTION
1		
2		
3		
4		
5		
6		
7		
8		
9		
10		
11		
12		
13		
14		
15		

Larson Engineering, Inc.
 3524 Labore Road
 White Bear Lake, MN 55110-5126
 651.481.9120 Fax: 651.481.9011
 www.larsoneng.com

I hereby certify that this plan, specification or report was prepared by me or under my direct supervision & that I am a duly Licensed Architect under the laws of the State of Minnesota

Signature: _____
 Printed name: Murray A. Mack
 License no.: 18686
 Date: 06/17/16

These drawings and specifications are the sole property of HMA Architects, Ltd. any reproduction or reuse of these documents is forbidden without written permission from HMA Architects, Ltd.

Project no: 1602
 Drawn by: SR, BW, BZ
 Checked by: DAS
 Date: 06/17/16
 Revisions:

hma ARCHITECTS

700 W. St. Germain Street
 Suite 200
 St. Cloud, MN 56301-3507
 www.hma-archs.com

T | 320.251.9155
 F | 320.251.4919
 hma@hma-archs.com

New Apartment Complex:

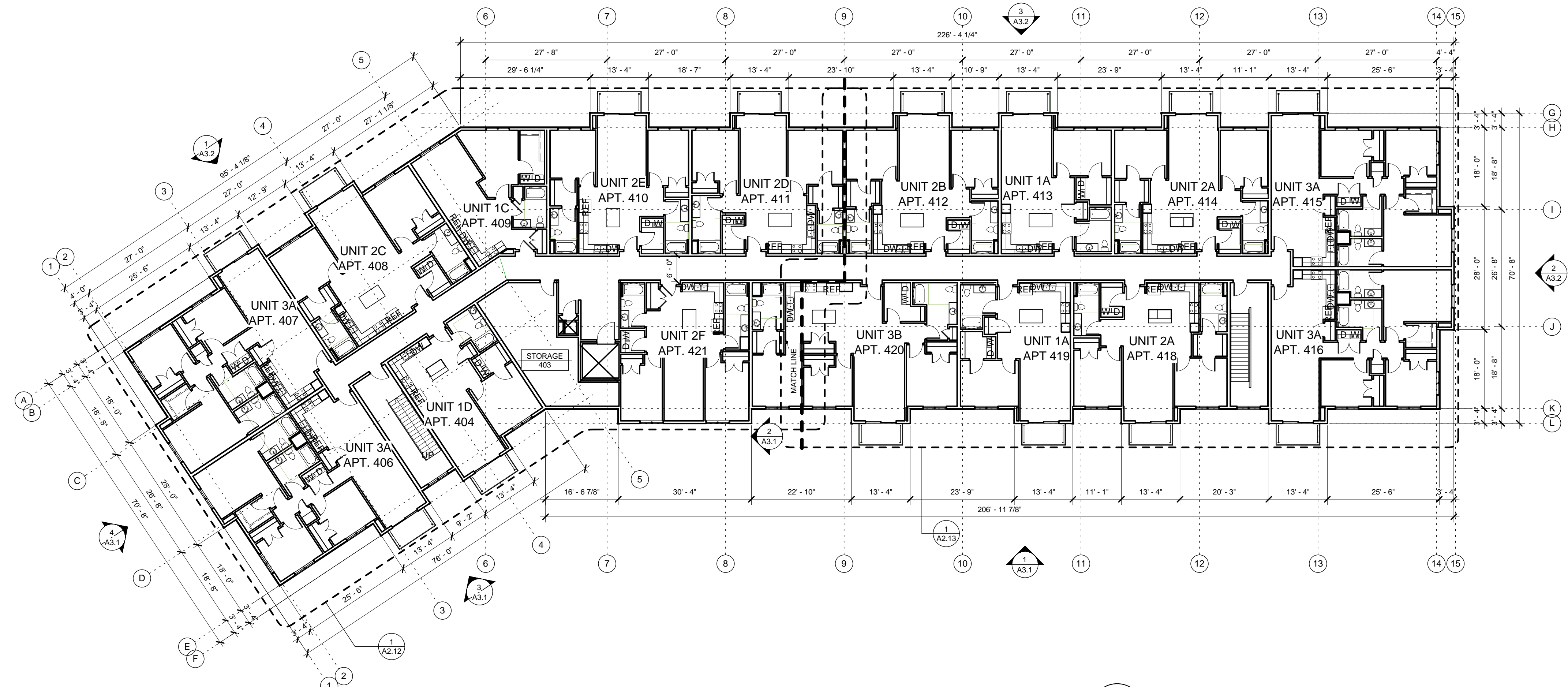
**Rivers Ridge
 Luxury
 Apartments**

Red Wing, MN

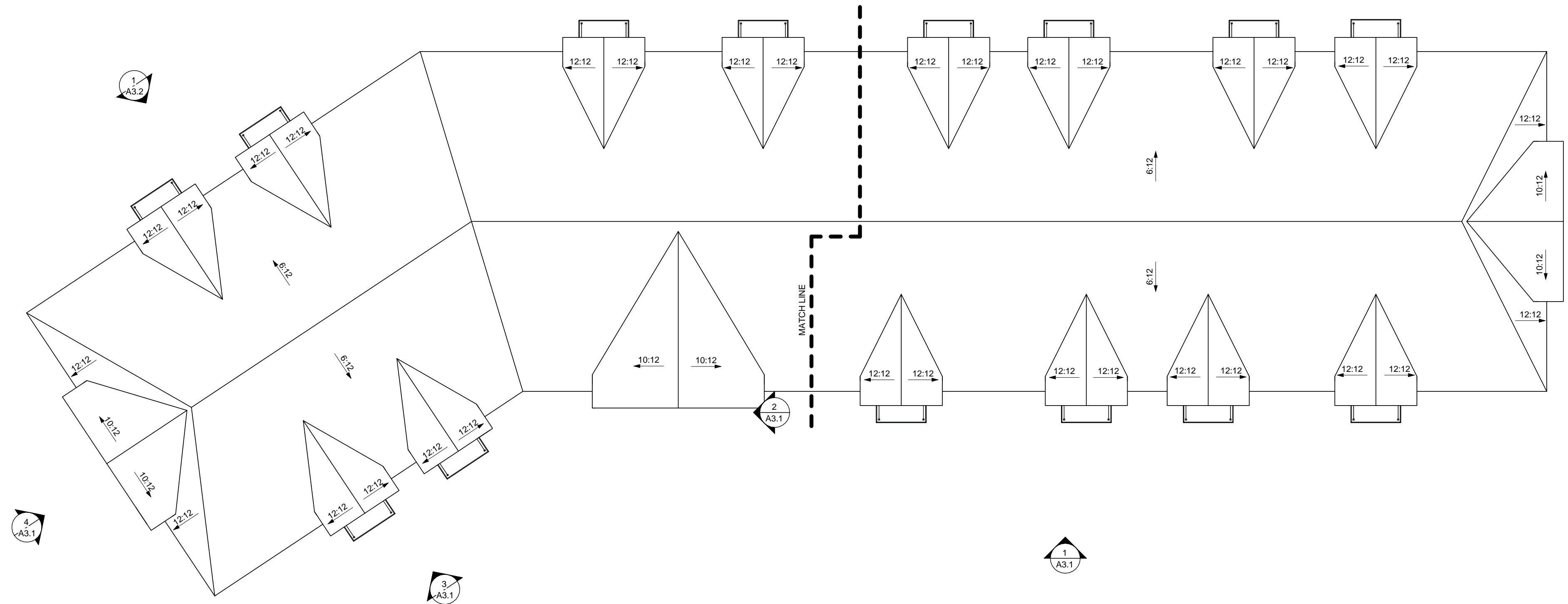
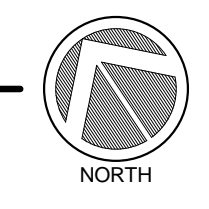
Second Floor Overall Plan,
 Third Floor Overall Plan

A2.2

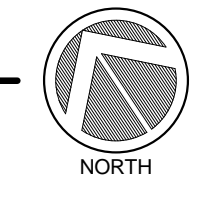
75% REVIEW - PRELIMINARY - NOT FOR CONSTRUCTION



1 FOURTH FLOOR PLAN
SCALE: 1/16" = 1'-0"



2 ROOF PLAN
SCALE: 1/16" = 1'-0"



REVISION SCHEDULE

Larson Engineering, Inc.
3524 Labore Road
White Bear Lake, MN 55110-5126
651.481.9120 Fax: 651.481.9011
www.larsonengr.com

I hereby certify that this plan, specification or report was prepared by me or under my direct supervision & that I am a duly Licensed Architect under the laws of the State of Minnesota

Signature: _____
Printed name: Murray A. Mack
License no.: 18686
Date: 06/17/16

These drawings and specifications are the sole property of HMA Architects, Ltd. any reproduction or reuse of these documents is forbidden without written permission from HMA Architects, Ltd.

Project no: 1602
Drawn by: SR, BW, BZ
Checked by: DAS
Date: 06/17/16
Revisions:

hma
ARCHITECTS

700 W. St. Germain Street
Suite 200
St. Cloud, MN 56301-3507
www.hma-archs.com

T | 320.251.9155
F | 320.251.4919
hma@hma-archs.com

New Apartment Complex:

**Rivers Ridge
Luxury
Apartments**

Red Wing, MN

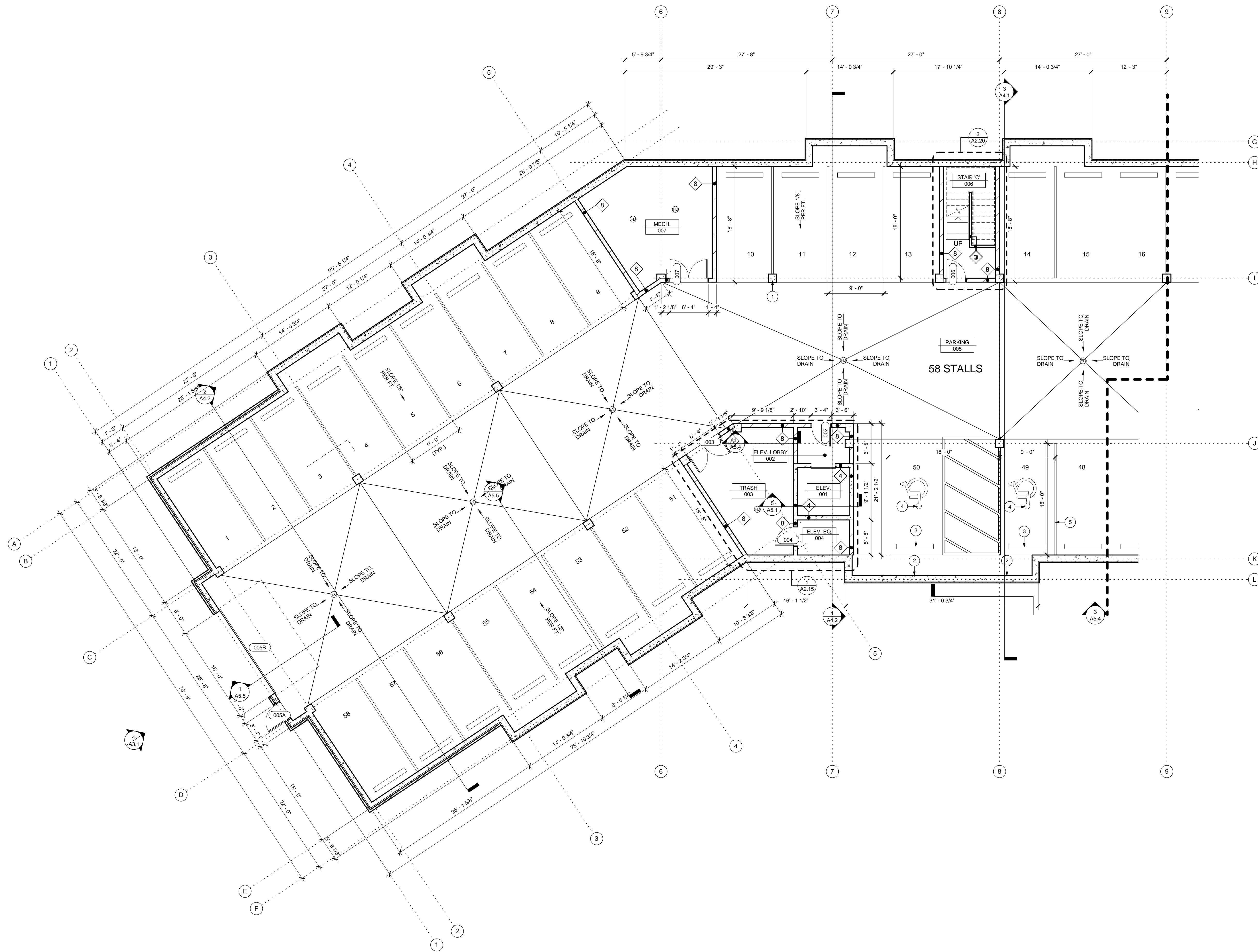
Fourth Floor Overall Plan,
Roof Overall Plan

A2.3

75% REVIEW - PRELIMINARY - NOT FOR CONSTRUCTION

- GENERAL NOTES:**
- ALL DIMENSIONS ON FLOOR PLANS ARE TAKEN FROM OUTSIDE FACE OF SHEATHING OR CENTERLINE OF STUDS OR FACE OF CONCRETE.
 - PROVIDE ESCUTCHEON PLATES AT ALL PLUMBING PIPE PENETRATIONS.
 - PROVIDE NECESSARY BLOCKING FOR KITCHEN CABINETS, WINDOW TREATMENTS, HANDRAILS, TOWEL BARS, GRAB BARS, FUTURE GRAB BARS, CLOSET SHELVING, ETC.
 - ALL PENETRATIONS IN UNIT PARTY WALLS (1-HOUR TYP.) SHALL BE FIRE STOPPED IN ACCORDANCE WITH FIRE STOP ASSEMBLIES LISTED WITH APPROVED TESTING AGENCIES AND APPROVED BY THE BUILDING OFFICIAL.
 - INSTALL FIRE BLOCKING IN ACCORDANCE WITH THE BUILDING CODE, FOR EXAMPLE:
 - CONCEALED STUD WALL AND PARTITIONS, INCLUDING FURRED SPACES AT THE CEILING AND FLOOR LEVELS AND AT 10 FOOT INTERVALS BOTH VERTICALLY AND HORIZONTALLY.
 - AT ALL INTERCONNECTIONS BETWEEN CONCEALED VERTICAL AND HORIZONTAL SPACES (SOFFITS, DROPPED CEILINGS, COVERED CEILINGS, ETC.) IN OPENINGS AROUND VENTS, PIPES, DUCTS, CHIMNEYS, AND SIMILAR OPENINGS.
 - SEE SHEET A-... FOR TYPICAL DOOR SCHEDULE AND ROOM FINISH SCHEDULE.
 - ALL INTERIOR APARTMENT UNIT WALLS ARE WALL TYPE P1 UNLESS NOTED OTHERWISE.
 - PROVIDE FIRE SPRINKLER PROTECTION TO ALL EXTERIOR BALCONIES.
 - PROVIDE PAINTED NUMBERS AT EACH PARKING STALL. COORDINATE WITH OWNER.

- FLOOR PLAN - KEY NOTES**
- PRECAST CONCRETE COLUMN. SEE STRUCTURAL.
 - ACCESSIBLE PARKING SIGN MOUNTED ON WALL. SEE DETAIL A-...
 - 8'-0" WHEEL STOP.
 - PAINTED ACCESSIBLE PARKING SYMBOL.
 - 4' WIDE WHITE PARKING STRIPE.



I hereby certify that this plan, specification or report was prepared by me or under my direct supervision & that I am a duly Licensed Architect under the laws of the State of Minnesota

Signature: _____
 Printed name: Murray A. Mack
 License no.: 18686
 Date: 06/17/16

These drawings and specifications are the sole property of HMA Architects, Ltd. any reproduction or reuse of these documents is forbidden without written permission from HMA Architects, Ltd.

Project no: 1602
 Drawn by: SR, BW, BZ
 Checked by: DAS
 Date: 06/17/16
 Revisions:



700 W. St. Germain Street
 Suite 200
 St. Cloud, MN 56301-3507
 www.hma-archs.com

T | 320.251.9155
 F | 320.251.4919
 hma@hma-archs.com

New Apartment Complex:

**Rivers Ridge
 Luxury
 Apartments**

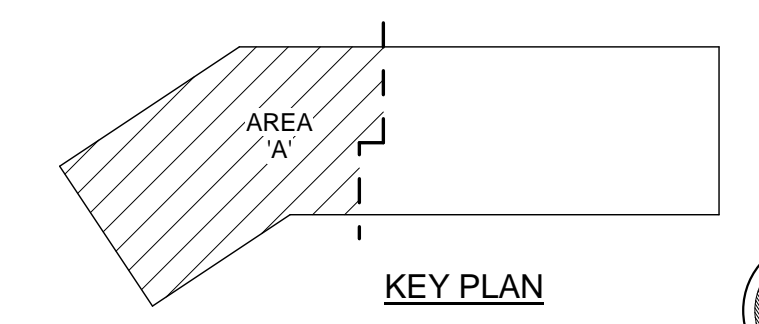
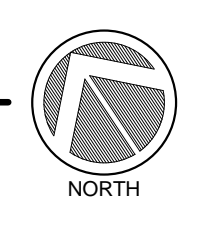
Red Wing, MN

Parking Level - Area A

A2.4

75% REVIEW - PRELIMINARY - NOT FOR CONSTRUCTION

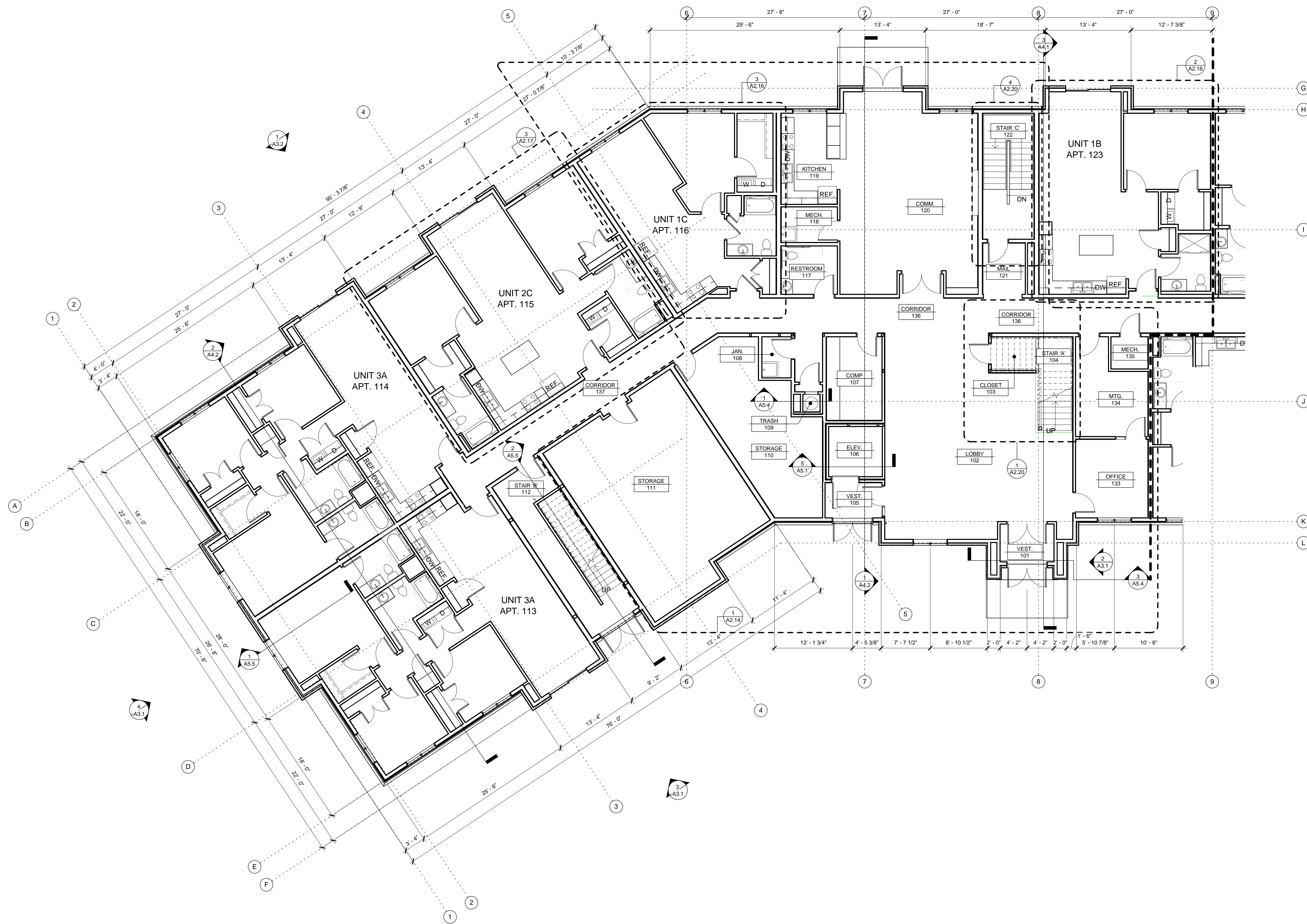
1 PARKING LEVEL - AREA A
 A2.4 SCALE: 1/8" = 1'-0"



GENERAL NOTES:

- A. ALL DIMENSIONS ON FLOOR PLANS ARE TAKEN FROM OUTSIDE FACE OF SHEATHING OR CENTERLINE OF STUDS OR FACE OF CONCRETE.
- B. PROVIDE ESCUTCHEON PLATES AT ALL PLUMBING PIPE PENETRATIONS.
- C. PROVIDE NECESSARY BLOCKING FOR KITCHEN CABINETS, WINDOW TREATMENTS, HANDRAILS, TOWEL BARS, GRAB BARS, FUTURE GRAB BARS, CLOSET SHELVING, ETC.
- D. ALL PENETRATIONS IN UNIT PARTY WALLS (1-HOUR TYP.) SHALL BE FIRE STOPPED IN ACCORDANCE WITH FIRE STOP ASSEMBLIES LISTED WITH APPROVED TESTING AGENCIES AND APPROVED BY THE BUILDING OFFICIAL.
- E. INSTALL FIRE BLOCKING IN ACCORDANCE WITH THE BUILDING CODE, FOR EXAMPLE:
 - CONCEALED STUD WALL AND PARTITIONS, INCLUDING FURRED SPACES AT THE CEILING AND FLOOR LEVELS AND AT 10 FOOT INTERVALS BOTH VERTICALLY AND HORIZONTALLY.
 - AT ALL INTERCONNECTIONS BETWEEN CONCEALED VERTICAL AND HORIZONTAL SPACES (SOFFITS, DROPPED CEILINGS, COVERED CEILINGS, ETC.) IN OPENINGS AROUND VENTS, PIPES, DUCTS, CHIMNEYS, AND SIMILAR OPENINGS.
- F. SEE SHEET A-... FOR TYPICAL DOOR SCHEDULE AND ROOM FINISH SCHEDULE.
- G. ALL INTERIOR APARTMENT UNIT WALLS ARE WALL TYPE P1 UNLESS NOTED OTHERWISE.
- H. PROVIDE FIRE SPRINKLER PROTECTION TO ALL EXTERIOR BALCONIES.
- I. PROVIDE PAINTED NUMBERS AT EACH PARKING STALL. COORDINATE WITH OWNER.

FLOOR PLAN - KEY NOTES



Larson Engineering, Inc.
 3524 Labore Road
 White Bear Lake, MN 55110-5126
 651.481.9120 Fax: 651.481.9001
 www.larsonengr.com

I hereby certify that this plan, specification or report was prepared by me or under my direct supervision & that I am a duly Licensed Architect under the laws of the State of Minnesota

Signature: _____
 Printed name: Murray A. Mack
 License no.: 18686
 Date: 06/17/16

These drawings and specifications are the sole property of HMA Architects, Ltd. any reproduction or reuse of these documents is forbidden without written permission from HMA Architects, Ltd.

Project no: 1602
 Drawn by: SR, BW, BZ
 Checked by: DAS
 Date: 06/17/16
 Revisions:

hma ARCHITECTS

700 W. St. Germain Street
 Suite 200
 St. Cloud, MN 56301-3507
 www.hma-archs.com

T | 320.251.9155
 F | 320.251.4919
 hma@hma-archs.com

New Apartment Complex:

**Rivers Ridge
 Luxury
 Apartments**

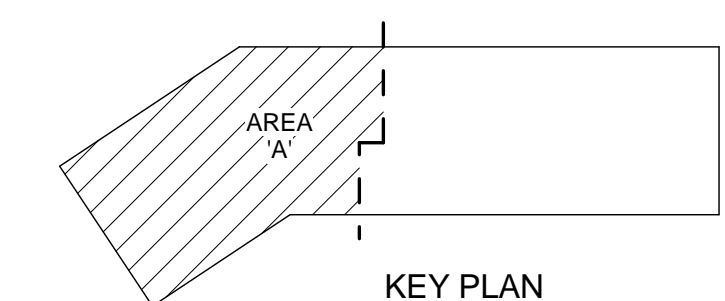
Red Wing, MN

First Floor Plan - Area A

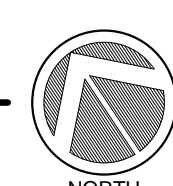
A2.6

75% REVIEW - PRELIMINARY - NOT FOR CONSTRUCTION

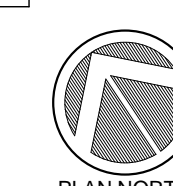
1 FIRST FLOOR - AREA A
 A2.6 SCALE: 1/8" = 1'-0"



KEY PLAN



NORTH

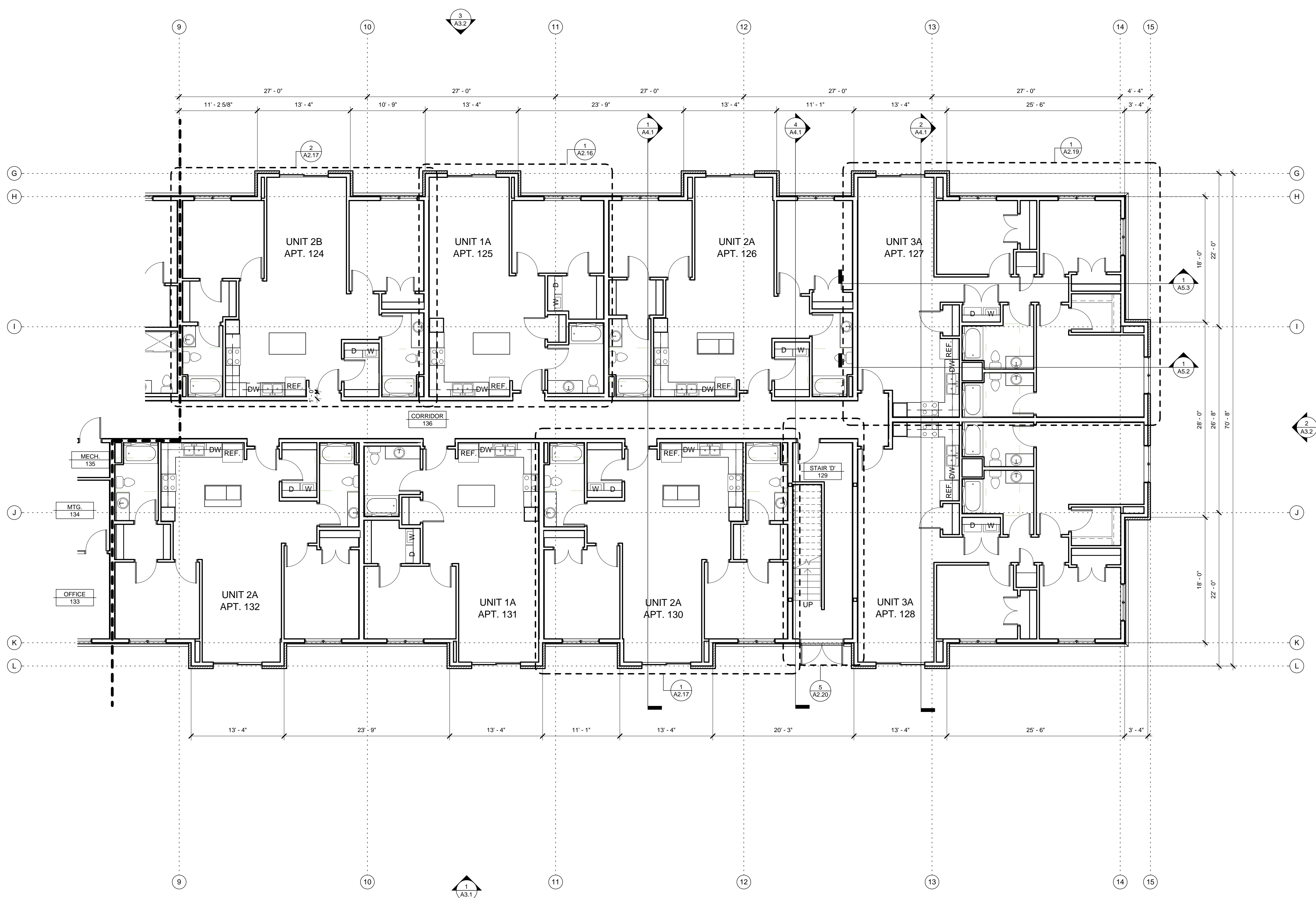


PLAN NORTH

GENERAL NOTES:

- A. ALL DIMENSIONS ON FLOOR PLANS ARE TAKEN FROM OUTSIDE FACE OF SHEATHING OR CENTERLINE OF STUDS OR FACE OF CONCRETE.
- B. PROVIDE ESCUTCHEON PLATES AT ALL PLUMBING PIPE PENETRATIONS.
- C. PROVIDE NECESSARY BLOCKING FOR KITCHEN CABINETS, WINDOW TREATMENTS, HANDRAILS, TOWEL BARS, GRAB BARS, FUTURE GRAB BARS, CLOSET SHELVING, ETC.
- D. ALL PENETRATIONS IN UNIT PARTY WALLS (1-HOUR TYP.) SHALL BE FIRE STOPPED IN ACCORDANCE WITH FIRE STOP ASSEMBLIES LISTED WITH APPROVED TESTING AGENCIES AND APPROVED BY THE BUILDING OFFICIAL.
- E. INSTALL FIRE BLOCKING IN ACCORDANCE WITH THE BUILDING CODE, FOR EXAMPLE:
 - CONCEALED STUD WALL AND PARTITIONS, INCLUDING FURRED SPACES AT THE CEILING AND FLOOR LEVELS AND AT 10 FOOT INTERVALS BOTH VERTICALLY AND HORIZONTALLY.
 - AT ALL INTERCONNECTIONS BETWEEN CONCEALED VERTICAL AND HORIZONTAL SPACES (SOFFITS, DROPPED CEILINGS, COVERED CEILINGS, ETC.)
 - IN OPENINGS AROUND VENTS, PIPES, DUCTS, CHIMNEYS, AND SIMILAR OPENINGS.
- F. SEE SHEET A-... FOR TYPICAL DOOR SCHEDULE AND ROOM FINISH SCHEDULE.
- G. ALL INTERIOR APARTMENT UNIT WALLS ARE WALL TYPE P1 UNLESS NOTED OTHERWISE.
- H. PROVIDE FIRE SPRINKLER PROTECTION TO ALL EXTERIOR BALCONIES.
- I. PROVIDE PAINTED NUMBERS AT EACH PARKING STALL. COORDINATE WITH OWNER.

FLOOR PLAN - KEY NOTES



Larson Engineering, Inc.
 3524 Labore Road
 White Bear Lake, MN 55110-5126
 651.481.9120 Fax: 651.481.9011
 www.larsonengr.com

I hereby certify that this plan, specification or report was prepared by me or under my direct supervision & that I am a duly Licensed Architect under the laws of the State of Minnesota

Signature: _____
 Printed name: Murray A. Mack
 License no.: 18686
 Date: 06/17/16

These drawings and specifications are the sole property of HMA Architects, Ltd. any reproduction or reuse of these documents is forbidden without written permission from HMA Architects, Ltd.

Project no: 1602
 Drawn by: SR, BW, BZ
 Checked by: DAS
 Date: 06/17/16
 Revisions:

hma ARCHITECTS

700 W. St. Germain Street
 Suite 200
 St. Cloud, MN 56301-3507
 www.hma-archs.com

T | 320.251.9155
 F | 320.251.4919
 hma@hma-archs.com

New Apartment Complex:

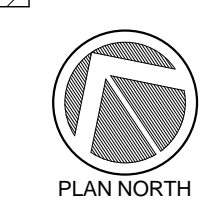
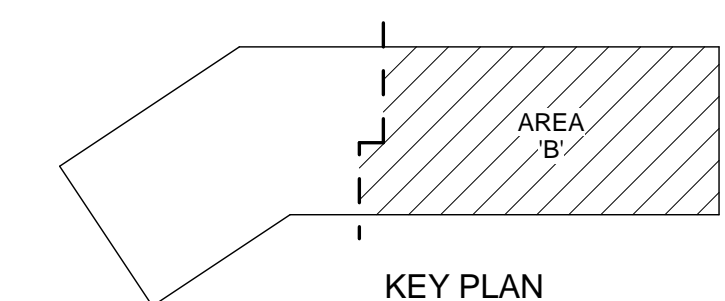
**Rivers Ridge
 Luxury
 Apartments**

Red Wing, MN

First Floor Plan - Area B

A2.7

75% REVIEW - PRELIMINARY - NOT FOR CONSTRUCTION

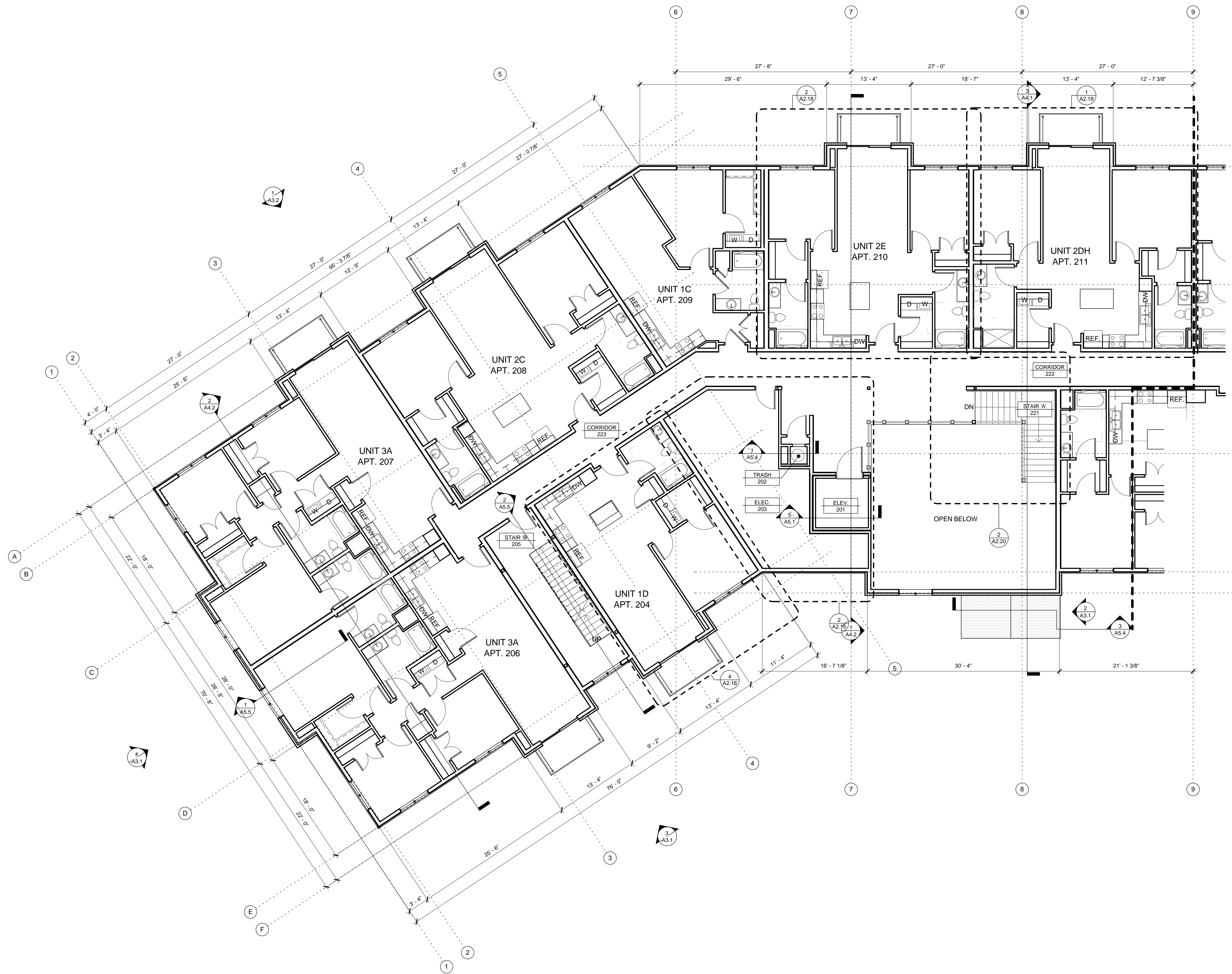


1 FIRST FLOOR - AREA B
 SCALE: 1/8" = 1'-0"

GENERAL NOTES:

- A. ALL DIMENSIONS ON FLOOR PLANS ARE TAKEN FROM OUTSIDE FACE OF SHEATHING OR CENTERLINE OF STUDS OR FACE OF CONCRETE.
- B. PROVIDE ESCUTCHEON PLATES AT ALL PLUMBING PIPE PENETRATIONS.
- C. PROVIDE NECESSARY BLOCKING FOR KITCHEN CABINETS, WINDOW TREATMENTS, HANDRAILS, TOWEL BARS, GRAB BARS, FUTURE GRAB BARS, CLOSET SHELVING, ETC.
- D. ALL PENETRATIONS IN UNIT PARTY WALLS (1-HOUR TYP.) SHALL BE FIRE STOPPED IN ACCORDANCE WITH FIRE STOP ASSEMBLIES LISTED WITH APPROVED TESTING AGENCIES AND APPROVED BY THE BUILDING OFFICIAL.
- E. INSTALL FIRE BLOCKING IN ACCORDANCE WITH THE BUILDING CODE, FOR EXAMPLE:
 - CONCEALED STUD WALL AND PARTITIONS, INCLUDING FURRED SPACES AT THE CEILING AND FLOOR LEVELS AND AT 10 FOOT INTERVALS BOTH VERTICALLY AND HORIZONTALLY.
 - AT ALL INTERCONNECTIONS BETWEEN CONCEALED VERTICAL AND HORIZONTAL SPACES (SOFFITS, DROPPED CEILINGS, COVERED CEILINGS, ETC.) IN OPENINGS AROUND VENTS, PIPES, DUCTS, CHIMNEYS, AND SIMILAR OPENINGS.
- F. SEE SHEET A-... FOR TYPICAL DOOR SCHEDULE AND ROOM FINISH SCHEDULE.
- G. ALL INTERIOR APARTMENT UNIT WALLS ARE WALL TYPE P1 UNLESS NOTED OTHERWISE.
- H. PROVIDE FIRE SPRINKLER PROTECTION TO ALL EXTERIOR BALCONIES.
- I. PROVIDE PAINTED NUMBERS AT EACH PARKING STALL. COORDINATE WITH OWNER.

FLOOR PLAN - KEY NOTES



I hereby certify that this plan, specification or report was prepared by me or under my direct supervision & that I am a duly Licensed Architect under the laws of the State of Minnesota

Signature: Murray A. Mack
 Printed name: Murray A. Mack
 License no.: 18686
 Date: 06/17/16

These drawings and specifications are the sole property of HMA Architects, Ltd. any reproduction or reuse of these documents is forbidden without written permission from HMA Architects, Ltd.

Project no: 1602
 Drawn by: SR, BW, BZ
 Checked by: DAS
 Date: 06/17/16
 Revisions:



700 W. St. Germain Street
 Suite 200
 St. Cloud, MN 56301-3507
 www.hma-archs.com

T | 320.251.9155
 F | 320.251.4919
 hma@hma-archs.com

New Apartment Complex:

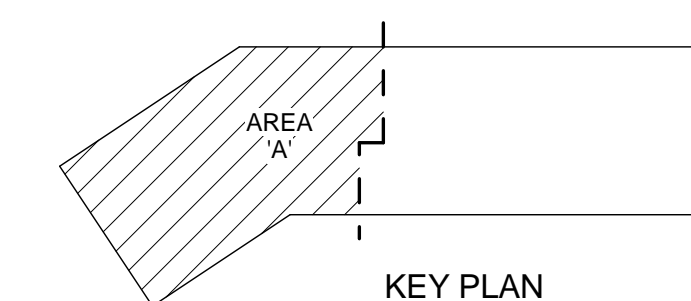
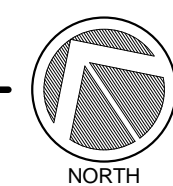
Rivers Ridge
 Luxury
 Apartments

Red Wing, MN

Second Floor Plan - Area A

A2.8

75% REVIEW - PRELIMINARY - NOT FOR CONSTRUCTION



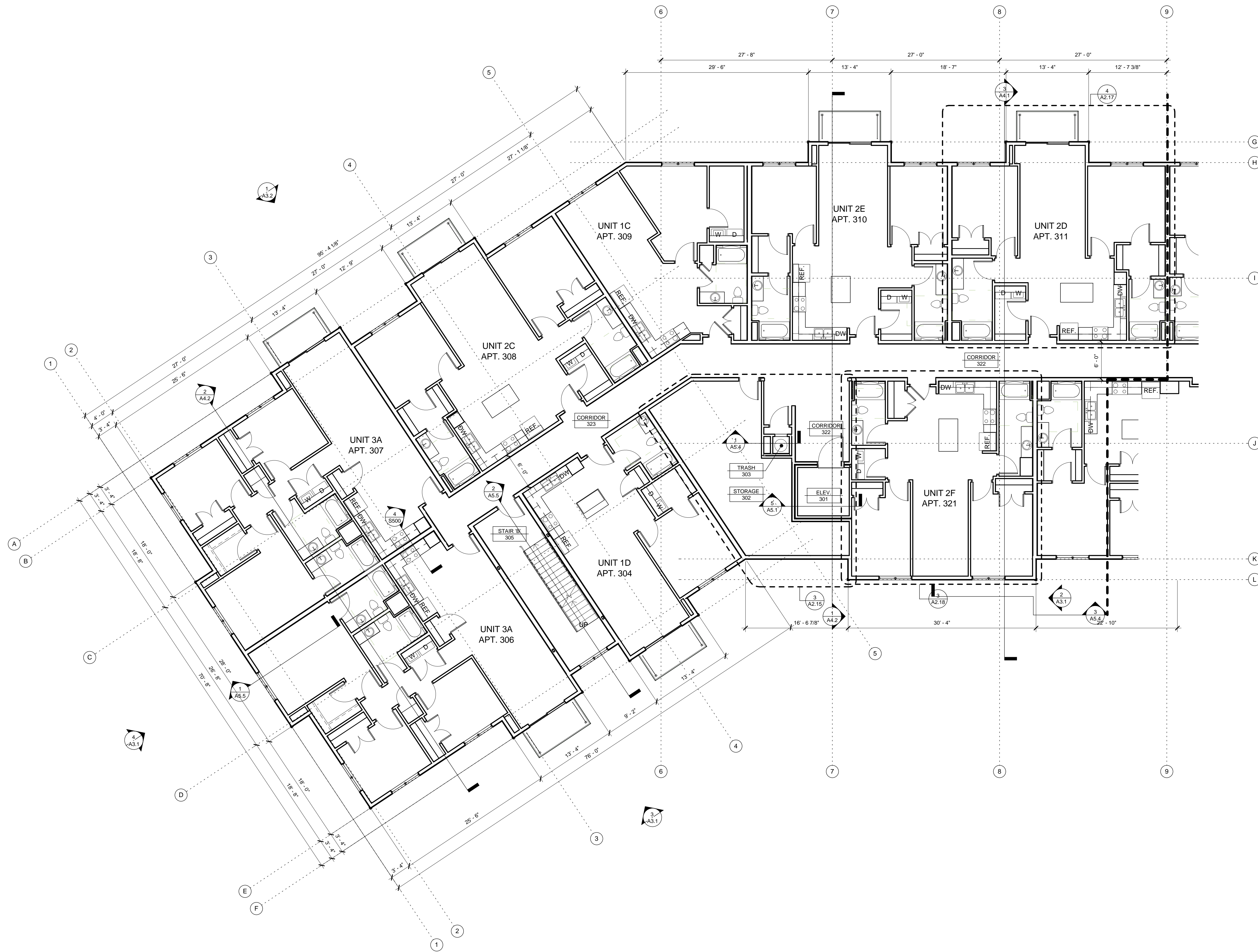
KEY PLAN



GENERAL NOTES:

- A. ALL DIMENSIONS ON FLOOR PLANS ARE TAKEN FROM OUTSIDE FACE OF SHEATHING OR CENTERLINE OF STUDS OR FACE OF CONCRETE.
- B. PROVIDE ESCUTCHEON PLATES AT ALL PLUMBING PIPE PENETRATIONS.
- C. PROVIDE NECESSARY BLOCKING FOR KITCHEN CABINETS, WINDOW TREATMENTS, HANDRAILS, TOWEL BARS, GRAB BARS, FUTURE GRAB BARS, CLOSET SHELVING, ETC.
- D. ALL PENETRATIONS IN UNIT PARTY WALLS (1-HOUR TYP.) SHALL BE FIRE STOPPED IN ACCORDANCE WITH FIRE STOP ASSEMBLIES LISTED WITH APPROVED TESTING AGENCIES AND APPROVED BY THE BUILDING OFFICIAL.
- E. INSTALL FIRE BLOCKING IN ACCORDANCE WITH THE BUILDING CODE, FOR EXAMPLE:
 - CONCEALED STUD WALL AND PARTITIONS, INCLUDING FURRED SPACES AT THE CEILING AND FLOOR LEVELS AND AT 10 FOOT INTERVALS BOTH VERTICALLY AND HORIZONTALLY.
 - AT ALL INTERCONNECTIONS BETWEEN CONCEALED VERTICAL AND HORIZONTAL SPACES (SOFFITS, DROPPED CEILINGS, COVERED CEILINGS, ETC.) IN OPENINGS AROUND VENTS, PIPES, DUCTS, CHIMNEYS, AND SIMILAR OPENINGS.
- F. SEE SHEET A-... FOR TYPICAL DOOR SCHEDULE AND ROOM FINISH SCHEDULE.
- G. ALL INTERIOR APARTMENT UNIT WALLS ARE WALL TYPE P1 UNLESS NOTED OTHERWISE.
- H. PROVIDE FIRE SPRINKLER PROTECTION TO ALL EXTERIOR BALCONIES.
- I. PROVIDE PAINTED NUMBERS AT EACH PARKING STALL. COORDINATE WITH OWNER.

FLOOR PLAN - KEY NOTES



I hereby certify that this plan, specification or report was prepared by me or under my direct supervision & that I am a duly Licensed Architect under the laws of the State of Minnesota

Signature: _____
 Printed name: Murray A. Mack
 License no.: 18686
 Date: 06/17/16

These drawings and specifications are the sole property of HMA Architects, Ltd. any reproduction or reuse of these documents is forbidden without written permission from HMA Architects, Ltd.

Project no: 1602
 Drawn by: SR, BW, BZ
 Checked by: DAS
 Date: 06/17/16
 Revisions:



700 W. St. Germain Street
 Suite 200
 St. Cloud, MN 56301-3507
 www.hma-archs.com

T | 320.251.9155
 F | 320.251.4919
 hma@hma-archs.com

New Apartment Complex:

**Rivers Ridge
 Luxury
 Apartments**

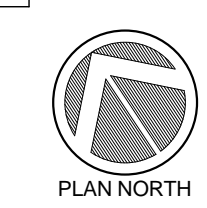
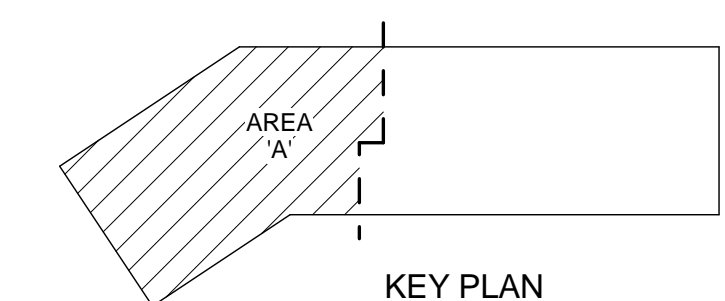
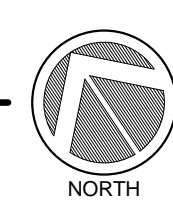
Red Wing, MN

Third Floor Plan - Area A

A2.10

75% REVIEW - PRELIMINARY - NOT FOR CONSTRUCTION

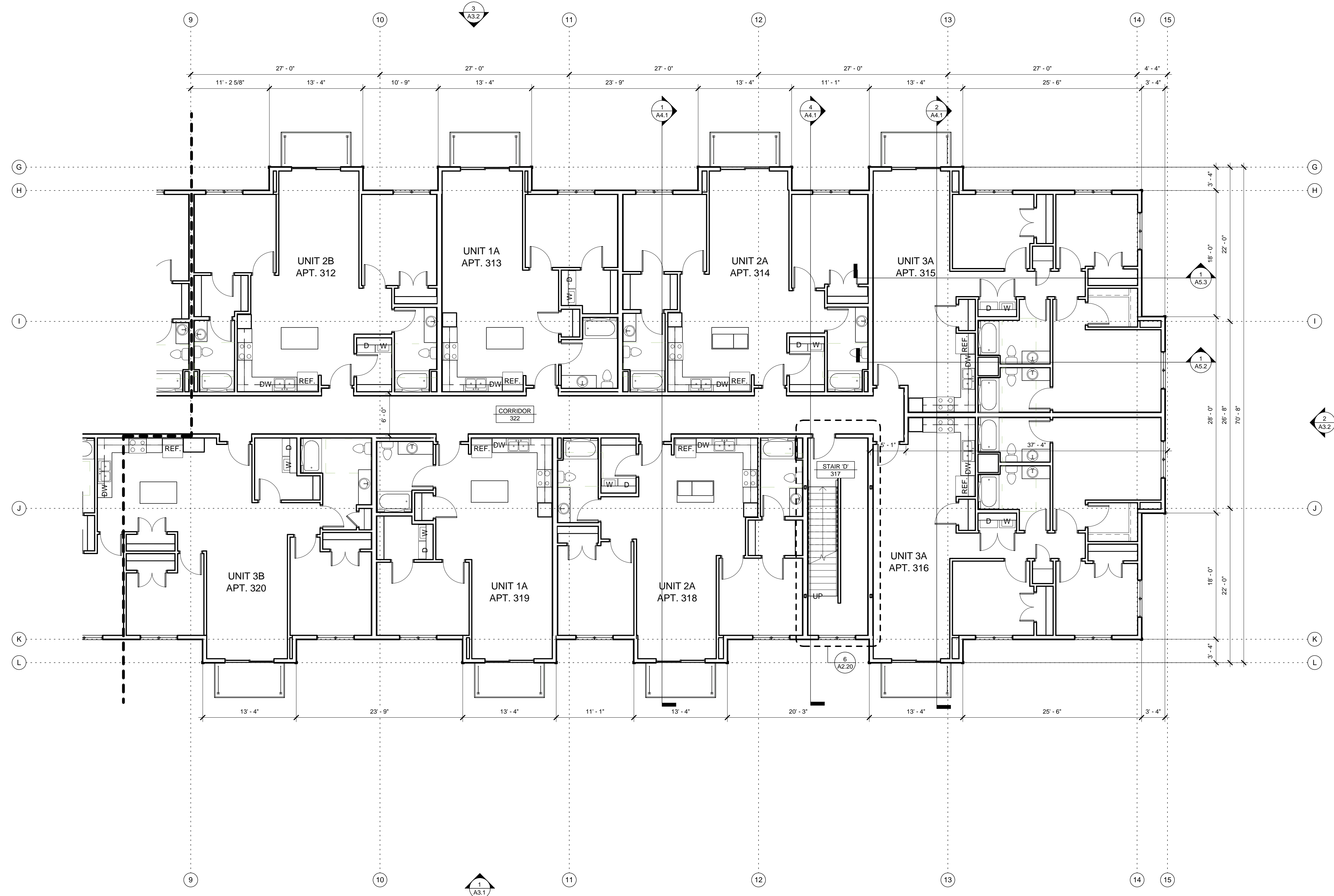
1 THIRD FLOOR - AREA A
 A2.10 SCALE: 1/8" = 1'-0"



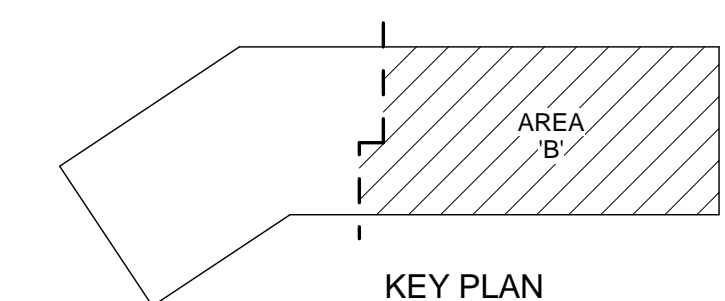
GENERAL NOTES:

- A. ALL DIMENSIONS ON FLOOR PLANS ARE TAKEN FROM OUTSIDE FACE OF SHEATHING OR CENTERLINE OF STUDS OR FACE OF CONCRETE.
- B. PROVIDE ESCUTCHEON PLATES AT ALL PLUMBING PIPE PENETRATIONS.
- C. PROVIDE NECESSARY BLOCKING FOR KITCHEN CABINETS, WINDOW TREATMENTS, HANDRAILS, TOWEL BARS, GRAB BARS, FUTURE GRAB BARS, CLOSET SHELVING, ETC.
- D. ALL PENETRATIONS IN UNIT PARTY WALLS (1-HOUR TYP.) SHALL BE FIRE STOPPED IN ACCORDANCE WITH FIRE STOP ASSEMBLIES LISTED WITH APPROVED TESTING AGENCIES AND APPROVED BY THE BUILDING OFFICIAL.
- E. INSTALL FIRE BLOCKING IN ACCORDANCE WITH THE BUILDING CODE, FOR EXAMPLE:
 - CONCEALED STUD WALL AND PARTITIONS, INCLUDING FURRED SPACES AT THE CEILING AND FLOOR LEVELS AND AT 10 FOOT INTERVALS BOTH VERTICALLY AND HORIZONTALLY.
 - AT ALL INTERCONNECTIONS BETWEEN CONCEALED VERTICAL AND HORIZONTAL SPACES (SOFFITS, DROPPED CEILINGS, COVERED CEILINGS, ETC.)
 - IN OPENINGS AROUND VENTS, PIPES, DUCTS, CHIMNEYS, AND SIMILAR OPENINGS.
- F. SEE SHEET A-... FOR TYPICAL DOOR SCHEDULE AND ROOM FINISH SCHEDULE.
- G. ALL INTERIOR APARTMENT UNIT WALLS ARE WALL TYPE P1 UNLESS NOTED OTHERWISE.
- H. PROVIDE FIRE SPRINKLER PROTECTION TO ALL EXTERIOR BALCONIES.
- I. PROVIDE PAINTED NUMBERS AT EACH PARKING STALL. COORDINATE WITH OWNER.

FLOOR PLAN - KEY NOTES



1 THIRD FLOOR - AREA B
A2.11 SCALE: 1/8" = 1'-0"



KEY PLAN



I hereby certify that this plan, specification or report was prepared by me or under my direct supervision & that I am a duly Licensed Architect under the laws of the State of Minnesota

Signature: _____
Printed name: Murray A. Mack
License no.: 18686
Date: 06/17/16

These drawings and specifications are the sole property of HMA Architects, Ltd. any reproduction or reuse of these documents is forbidden without written permission from HMA Architects, Ltd.

Project no: 1602
Drawn by: SR, BW, BZ
Checked by: DAS
Date: 06/17/16
Revisions:



700 W. St. Germain Street
Suite 200
St. Cloud, MN 56301-3507
www.hma-archs.com

T | 320.251.9155
F | 320.251.4919
hma@hma-archs.com

New Apartment Complex:

Rivers Ridge
Luxury
Apartments

Red Wing, MN

Third Floor Plan - Area B

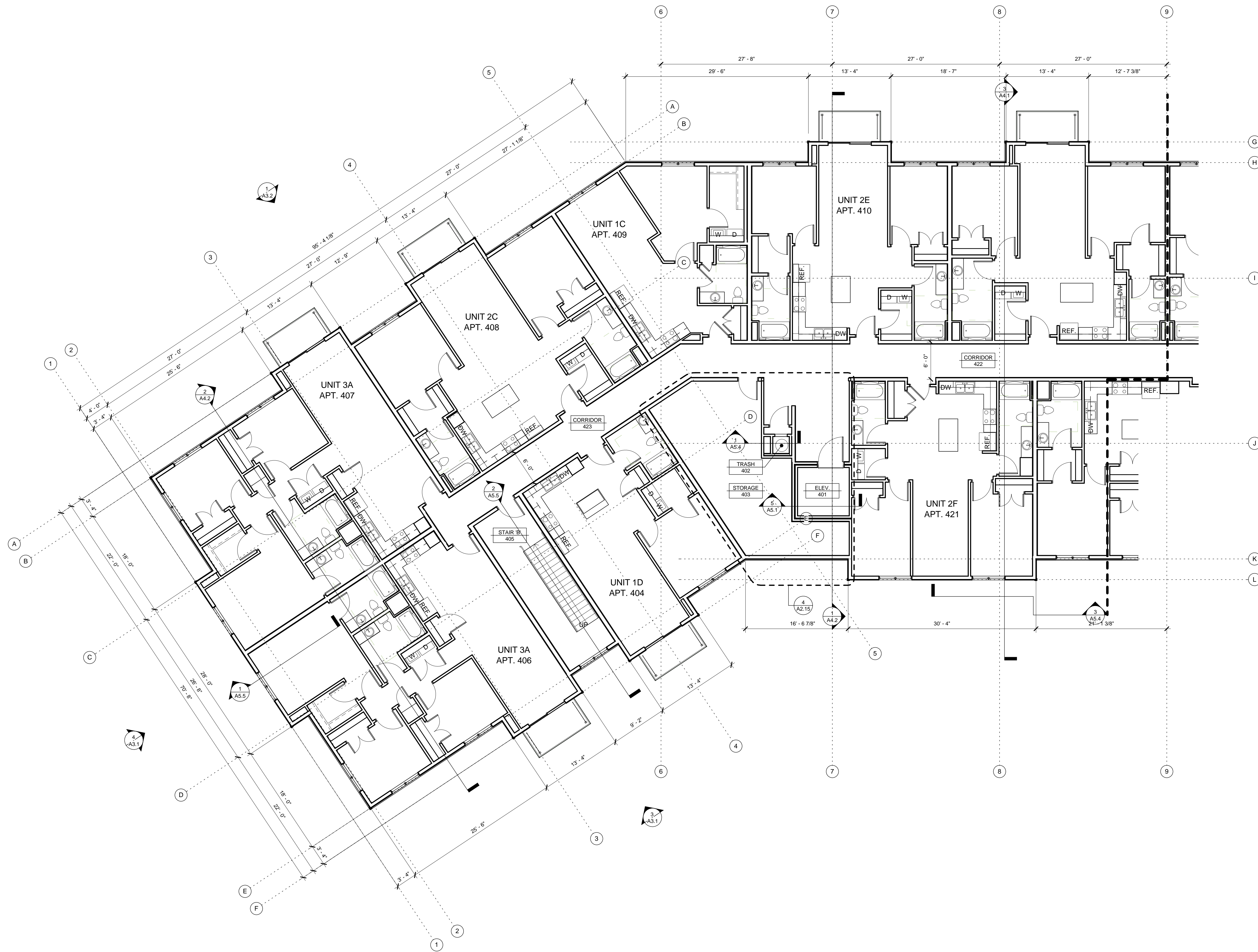
A2.11

75% REVIEW - PRELIMINARY - NOT FOR CONSTRUCTION

GENERAL NOTES:

- A. ALL DIMENSIONS ON FLOOR PLANS ARE TAKEN FROM OUTSIDE FACE OF SHEATHING OR CENTERLINE OF STUDS OR FACE OF CONCRETE.
- B. PROVIDE ESCUTCHEON PLATES AT ALL PLUMBING PIPE PENETRATIONS.
- C. PROVIDE NECESSARY BLOCKING FOR KITCHEN CABINETS, WINDOW TREATMENTS, HANDRAILS, TOWEL BARS, GRAB BARS, FUTURE GRAB BARS, CLOSET SHELVING, ETC.
- D. ALL PENETRATIONS IN UNIT PARTY WALLS (1-HOUR TYP.) SHALL BE FIRE STOPPED IN ACCORDANCE WITH FIRE STOP ASSEMBLIES LISTED WITH APPROVED TESTING AGENCIES AND APPROVED BY THE BUILDING OFFICIAL.
- E. INSTALL FIRE BLOCKING IN ACCORDANCE WITH THE BUILDING CODE, FOR EXAMPLE:
 - CONCEALED STUD WALL AND PARTITIONS, INCLUDING FURRED SPACES AT THE CEILING AND FLOOR LEVELS AND AT 10 FOOT INTERVALS BOTH VERTICALLY AND HORIZONTALLY.
 - AT ALL INTERCONNECTIONS BETWEEN CONCEALED VERTICAL AND HORIZONTAL SPACES (SOFFITS, DROPPED CEILINGS, COVERED CEILINGS, ETC.) IN OPENINGS AROUND VENTS, PIPES, DUCTS, CHIMNEYS, AND SIMILAR OPENINGS.
- F. SEE SHEET A-... FOR TYPICAL DOOR SCHEDULE AND ROOM FINISH SCHEDULE.
- G. ALL INTERIOR APARTMENT UNIT WALLS ARE WALL TYPE P1 UNLESS NOTED OTHERWISE.
- H. PROVIDE FIRE SPRINKLER PROTECTION TO ALL EXTERIOR BALCONIES.
- I. PROVIDE PAINTED NUMBERS AT EACH PARKING STALL. COORDINATE WITH OWNER.

FLOOR PLAN - KEY NOTES



Larson Engineering, Inc.
 3524 Labore Road
 White Bear Lake, MN 55110-5126
 651.481.9120 Fax: 651.481.9001
 www.larsonengr.com

I hereby certify that this plan, specification or report was prepared by me or under my direct supervision & that I am a duly Licensed Architect under the laws of the State of Minnesota

Signature: _____
 Printed name: Murray A. Mack
 License no.: 18686
 Date: 06/17/16

These drawings and specifications are the sole property of HMA Architects, Ltd. any reproduction or reuse of these documents is forbidden without written permission from HMA Architects, Ltd.

Project no: 1602
 Drawn by: SR, BW, BZ
 Checked by: DAS
 Date: 06/17/16
 Revisions:

hma
 ARCHITECTS

700 W. St. Germain Street
 Suite 200
 St. Cloud, MN 56301-3507
 www.hma-archs.com

T | 320.251.9155
 F | 320.251.4919
 hma@hma-archs.com

New Apartment Complex:

**Rivers Ridge
 Luxury
 Apartments**

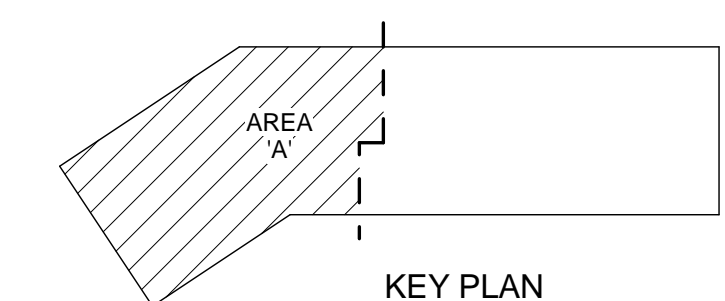
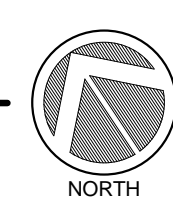
Red Wing, MN

Fourth Floor Plan - Area A

A2.12

75% REVIEW - PRELIMINARY - NOT FOR CONSTRUCTION

1 FOURTH FLOOR - AREA A
 SCALE: 1/8" = 1'-0"



KEY PLAN

