

**PLUMBING LEGEND**

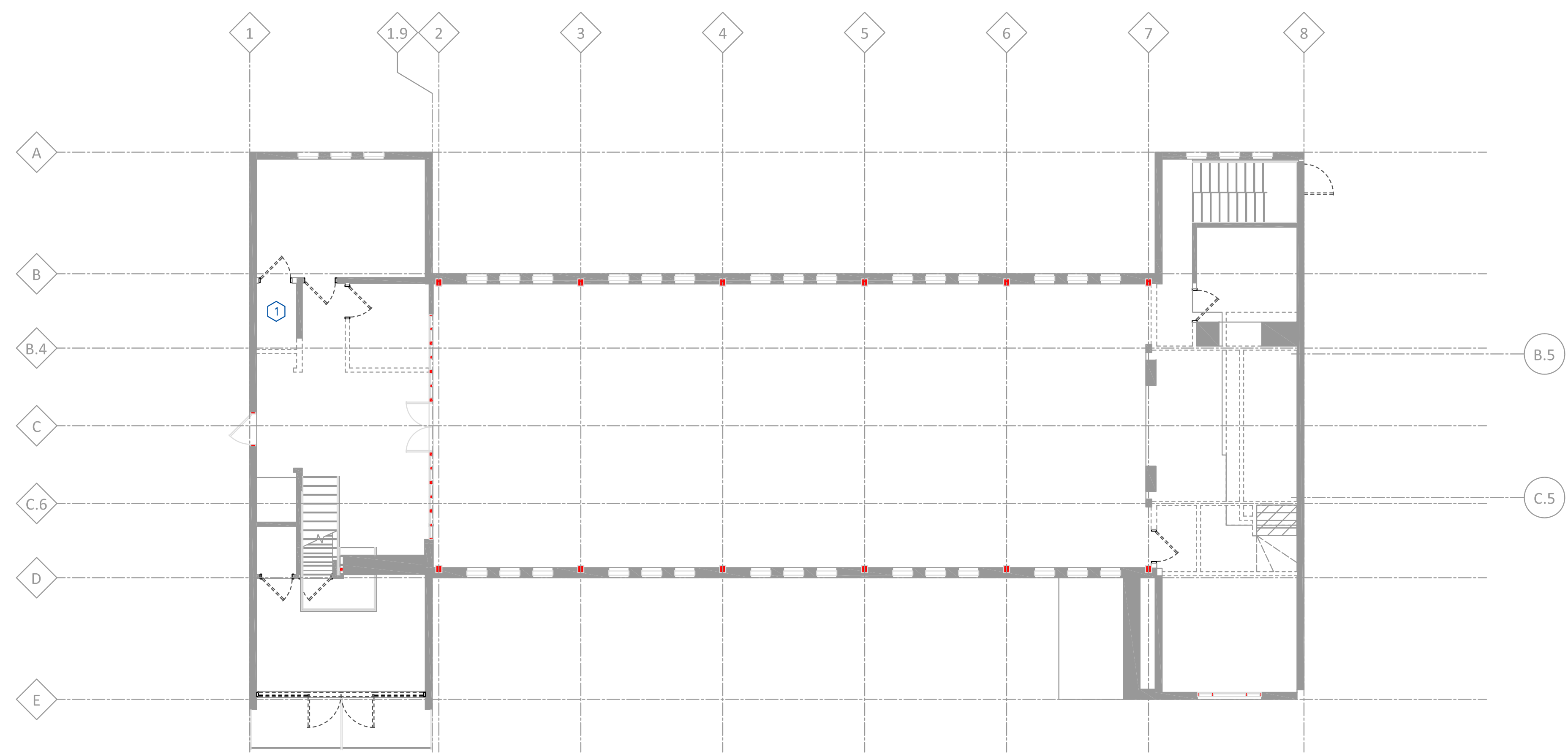
- DRAIN & WASTE PIPING BELOW GRADE (W)
- DRAIN & WASTE PIPING ABOVE GRADE (W)
- VENT PIPING (VT)
- VENT THROUGH ROOF (VTR)
- COLD WATER PIPING (C)
- HOT WATER PIPING (H)
- HOT RETURN WATER PIPING (HR)
- HC HARD COLD WATER PIPING (HC)
- ELBOW UP
- ELBOW DOWN
- TEE UP
- TEE DOWN
- FLOOR DRAIN (FD) / AREA DRAIN (AD)
- FLOOR SINK (FS)
- BALL VALVE (normally open)
- BALANCING VALVE
- UNION
- CLEAN OUT (CO)
- IW INDIRECT WASTE
- W/OS WITH OFFSETS
- WH WATER HEATER
- WS WATER SOFTENER
- SP SUMP PUMP

**PLUMBING GENERAL NOTES**

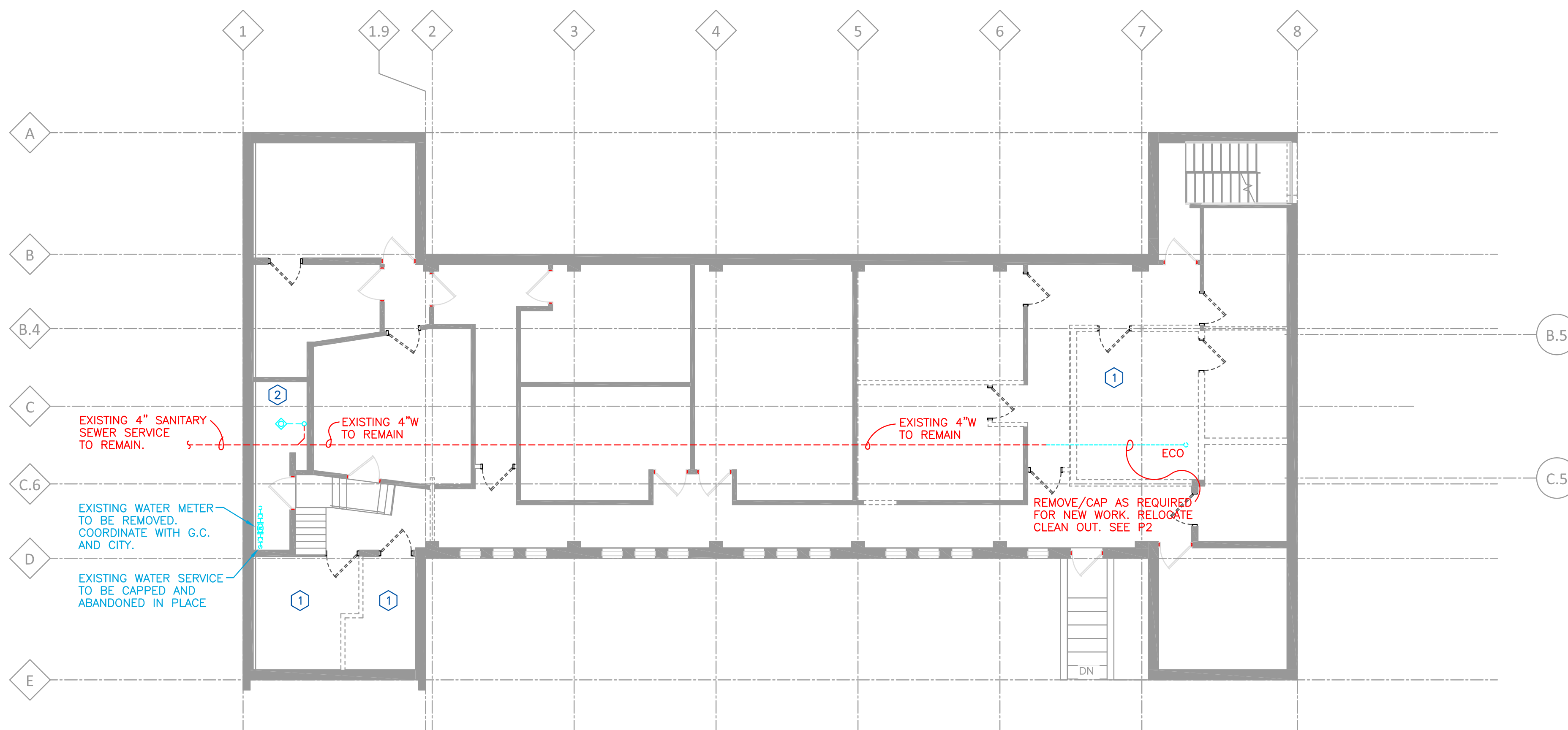
1. DOMESTIC WATER PIPING – TYPE M COPPER (MEETING ASTM STANDARD B88) AND/OR UPONOR AQUAPEX (COMPLYING WITH ASTM STANDARD F877 AND F876) AND/OR CPVC (COMPLYING WITH ASTM STANDARD D2846)
2. ALL DWV – SCHEDULE 40 PVC (COMPLYING WITH ASTM STANDARD D2665) AND/OR CAST IRON (MEETING ASTM A-74 & ANSI A21.6, A21.8)
3. PLUMBING INSTALLED ACCORDING TO STATE AND LOCAL PLUMBING CODES.
4. THE WATER PIPING SYSTEM SHALL BE DISINFECTED IN ACCORDANCE WITH MINNESOTA RULES, PART 4714.609.9. THE PLUMBING SYSTEM SHALL BE TESTED IN ACCORDANCE WITH MINNESOTA RULES, PART 4714.609.4.
5. PROVIDE CLEANOUTS AT PIPE SIZE CHANGES PER MN RULES, PART 4714.707.4.
6. APPROPRIATE USE OF WYE'S AND BENDS SHALL BE USED PER MN RULES, PART 4714.706.0.
7. SANITARY SEWER @ 1/8" PER FT SLOPE UNLESS SHOWN OTHERWISE. (4" AND LARGER)
8. DOMESTIC WATER PIPE SIZING PER TABLE 610.4, 2015 MN PLUMBING CODE.

**PLUMBING REFERENCE NOTES**

- ① PLUMBING FIXTURES TO BE REMOVED. CAP WASTE BELOW FLOOR AND ABANDON IN PLACE. REMOVE/CAP VENT PIPING AS REQUIRED FOR REMODEL WORK. VERIFY VENTS THROUGH ROOF TO REMAIN. BUILDING VENT THRU ROOF TO REMAIN/BE REVISED. VERIFY PLUMBING TO REMAIN. REMOVE ALL WATER PIPING BACK TO EXISTING WATER SERVICE.
- ② FLOOR DRAIN TO REMAIN.



② MAIN LEVEL DEMOLITION PLAN  
P1 1/8" = 1'-0" PLUMBING



① LOWER LEVEL DEMOLITION PLAN  
P1 1/8" = 1'-0" PLUMBING

DATE: 11/16/17  
MICHAEL A. JOHNSON DB13132M

---

**BERD** Mechanical Contractors, Inc.  
 25 Good, MN 56001  
 Phone: 320-255-2947  
 Fax: 320-255-2947

---

DATE	REVISION	DESCRIPTION	BY
11/16/17 <td>AS SHOWN <td>SCALE PER P1 <td></td> </td></td>	AS SHOWN <td>SCALE PER P1 <td></td> </td>	SCALE PER P1 <td></td>	
	CHECKED BY: MAJ <td></td> <td></td>		

---

DATE: 11/16/17  
SCALE PER P1  
CHECKED BY: MAJ  
JOB NO. C-0283

---

NORTHWEST CHURCH OF CHRIST  
NEW HOPE, MN

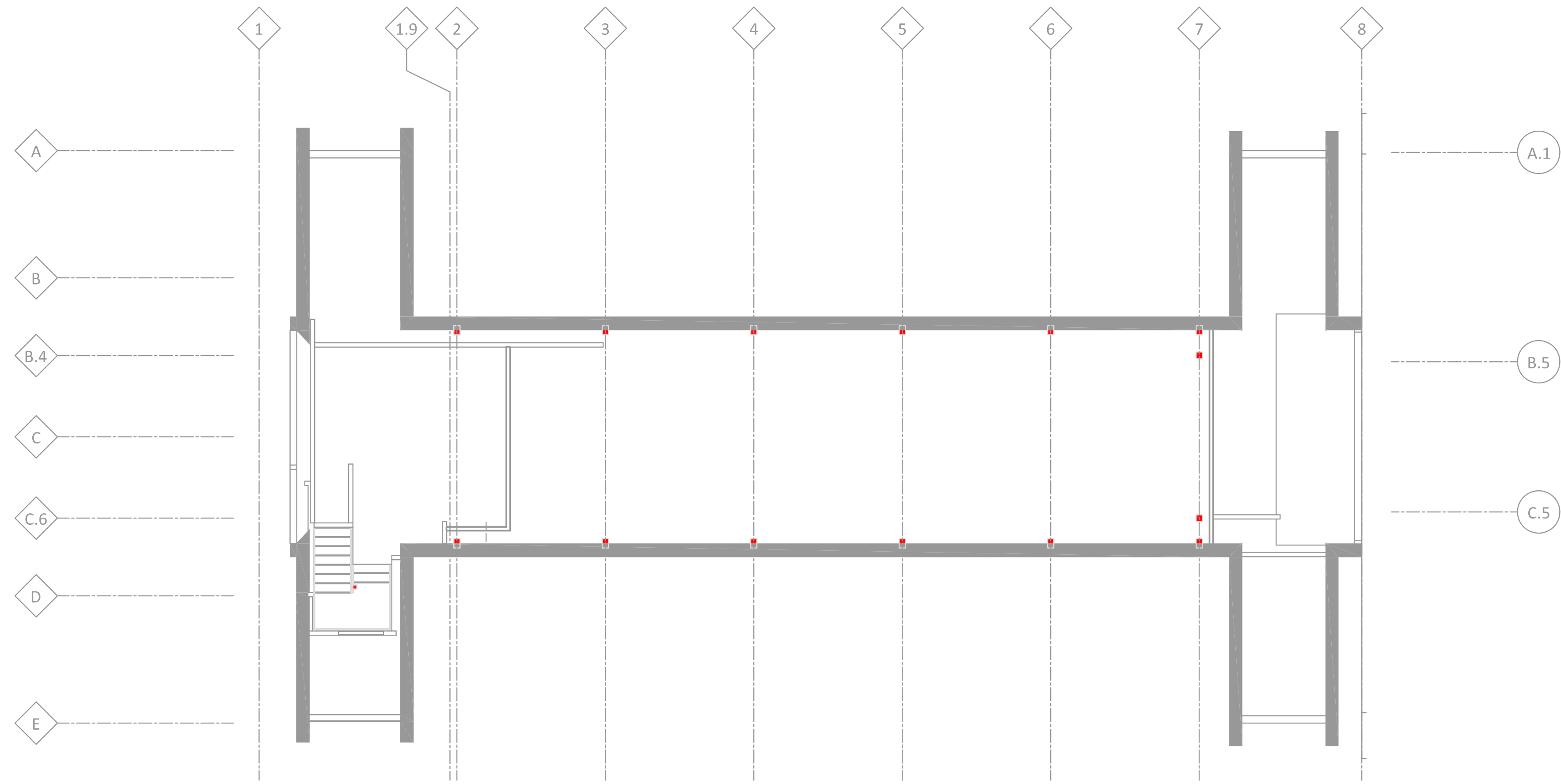
---

LOWER & MAIN LEVEL DEMOLITION PLAN

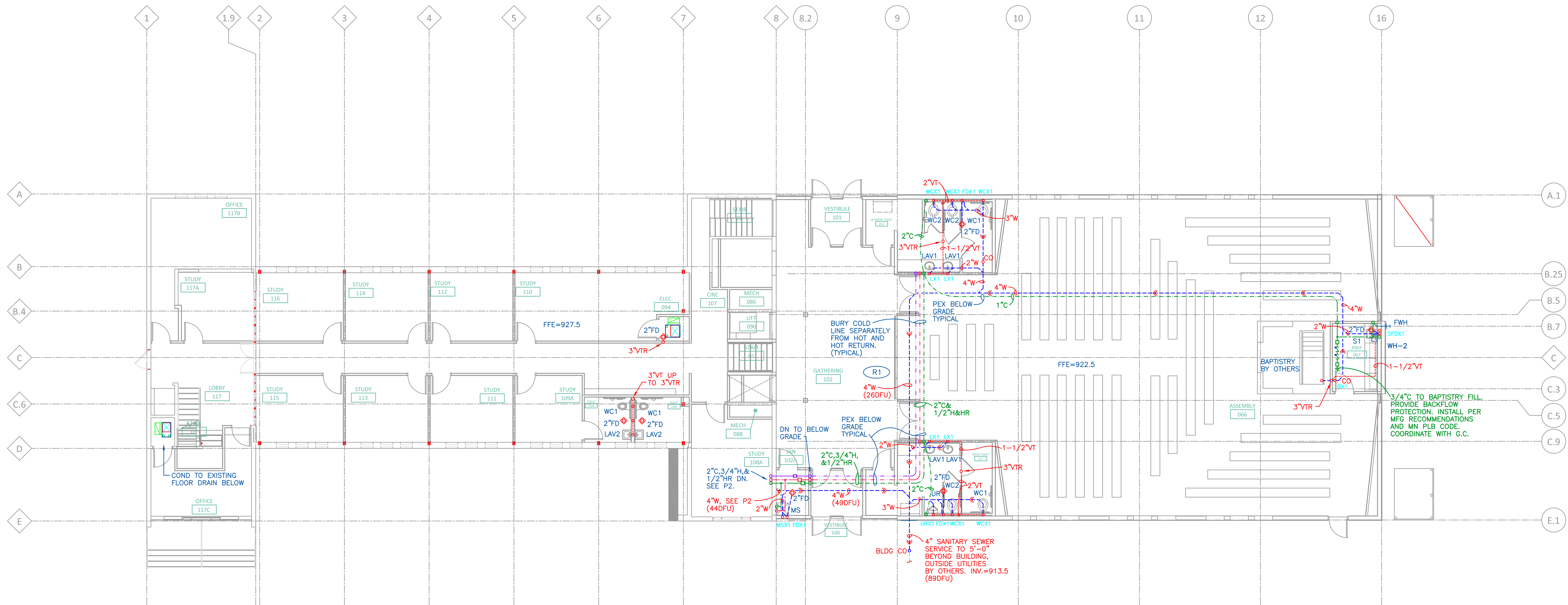
---

DRAWING NO.  
P1





2 UPPER LEVEL PLAN  
 P3 1/8" = 1'-0" PLUMBING



1 MAIN LEVEL PLAN  
 P3 1/8" = 1'-0" PLUMBING

DATE: 11/16/17  
 MICHAEL A. JOHNSON 0813.324

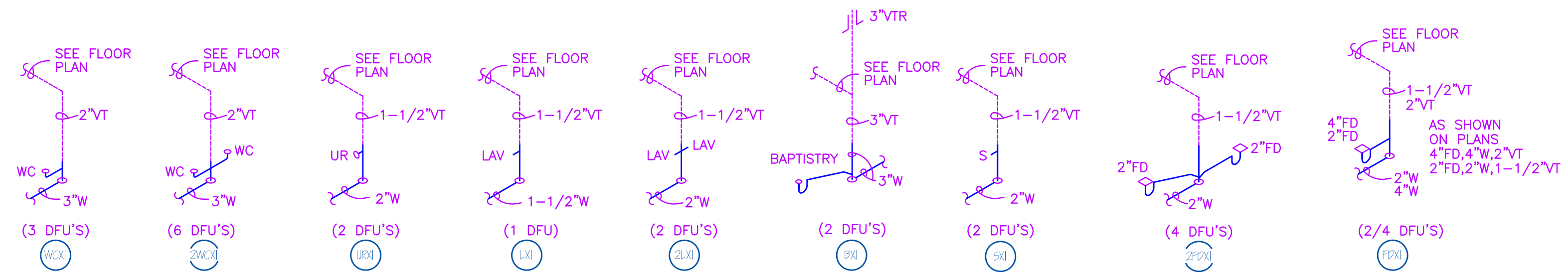
MECHANICAL CONTRACTORS, INC.  
 25. Good, MN 55008  
 Phone: 320-255-2847  
 Fax: 320-255-2832

DATE: 11/16/17  
 AS SHOWN  
 SCALE: 1/8" = 1'-0"  
 CHECKED BY: MAJ  
 JOB NO. C-0283

DATE	REVISION	DESCRIPTION	BY
11/16/17	1	ISSUE FOR PERMIT	MAJ
11/16/17	2	REVISIONS TO PERMIT	MAJ
11/16/17	3	REVISIONS TO PERMIT	MAJ

DATE: 11/16/17  
 AS SHOWN  
 SCALE: 1/8" = 1'-0"  
 CHECKED BY: MAJ  
 JOB NO. C-0283

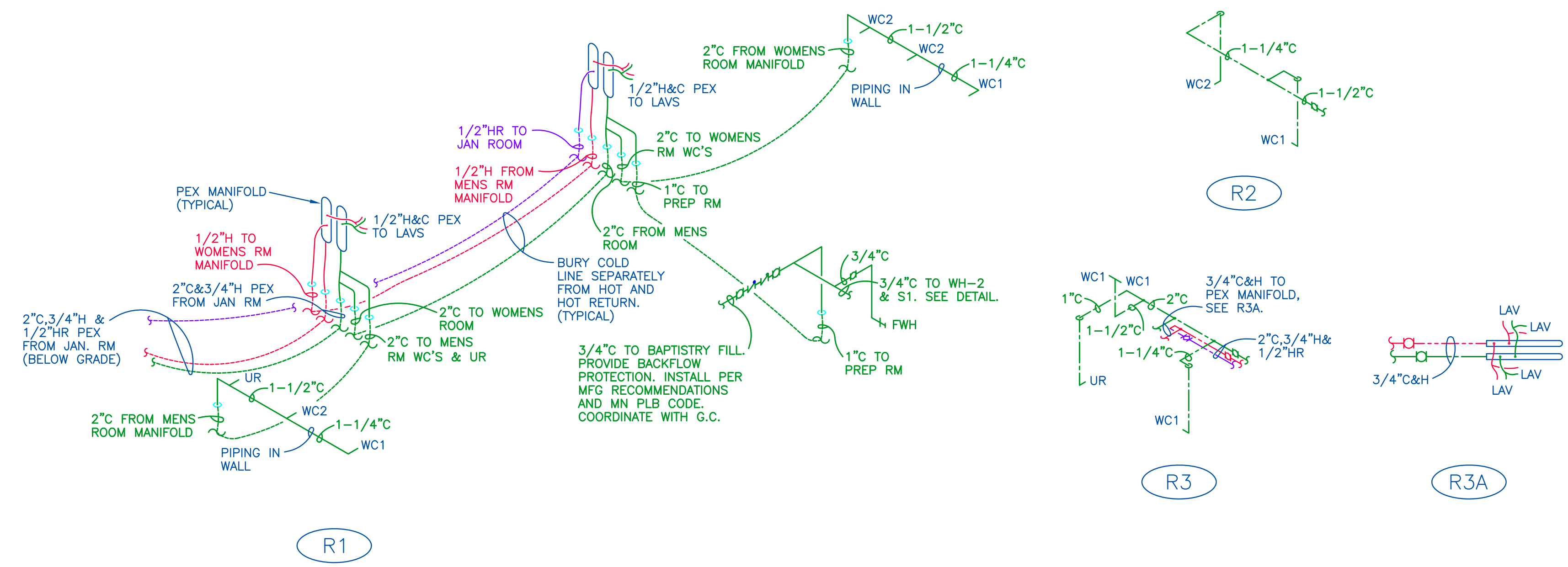
NORTHWEST CHURCH OF CHRIST  
 NEW HOPE, MN  
 MAIN & UPPER LEVEL PLAN



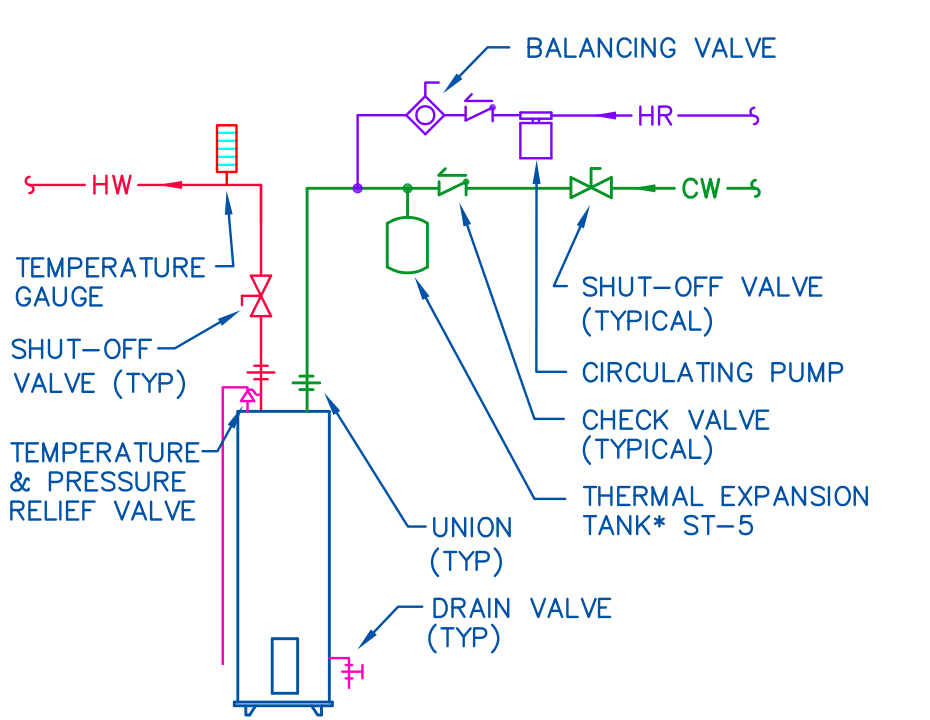
1 PLUMBING ISOMETRICS  
NO SCALE DRAIN, WASTE, & VENT

PLUMBING FIXTURE SCHEDULE					
FIXTURE		WASTE	VENT	HOT	COLD
WC1	WATER CLOSET (ADA) - 1.6 GAL., VITREOUS WHITE CHINA, ELONGATED BOWL, FLUSHOMETER, FLOOR MOUNT - MANSFIELD #1319 FLUSH VALVE - MANUAL, EXPOSED, CHROME PLATED - ZURN #A-6000AV-WS1 SEAT - ELONGATED, OPEN FRONT, LESS COVER - BENEKE #533	3"	2"	-	1"
WC2	WATER CLOSET - 1.6 GAL., VITREOUS WHITE CHINA, ELONGATED BOWL, FLUSHOMETER, FLOOR MOUNT - MANSFIELD #1311 FLUSH VALVE - MANUAL, EXPOSED, CHROME PLATED - ZURN #A-6000AV-WS1 SEAT - ELONGATED, OPEN FRONT, LESS COVER - BENEKE #533	3"	2"	-	1"
UR	URINAL (ADA) - HALF STALL, WASH DOWN URINAL, VITREOUS WHITE CHINA - MANSFIELD #410 FLUSH VALVE - MANUAL, EXPOSED, CHROME PLATED FLUSH METER - SLOAN #186-1	2"	1-1/2"	-	3/4"
LAV1	LAVATORY (ADA) - 20"x17", DROP-IN OVAL, VITREOUS WHITE CHINA - PROFLO #PF20174 FAUCET - SINGLE LEVER HANDLE, CHROME PLATED, WITH GRID STRAINER - PFISTER #J142-800C TRAP WRAP - TRUEBRO #102W	1-1/2"	1-1/2"	1/2"	1/2"
LAV2	LAVATORY (ADA) - 20"x18", WALL HUNG, VITREOUS WHITE CHINA - MANSFIELD #2018HBNS FAUCET - SINGLE LEVER HANDLE, CHROME PLATED, WITH GRID STRAINER - PFISTER #J142-800C TRAP WRAP - TRUEBRO #102W	1-1/2"	1-1/2"	1/2"	1/2"
S1	SINK - 17"x21"x6.5", STAINLESS STEEL, SINGLE COMPARTMENT - MANLINE #MLD1721 FAUCET - SINGLE LEVER HANDLE, STAINLESS STEEL, WITH STRAINER, LESS SPRAY - PFISTER #J134-144C	2"	1-1/2"	1/2"	1/2"
MS	MOP SINK - 24"x24"x10" MOLDED STONE - JONESPEC #MB-2600 FAUCET - ROUGH CHROME-PLATED CAST BRASS - ZURN #Z-B41M1-RC	2"	1-1/2"	1/2"	1/2"
BT	BAPTISTRY TUB - SUPPLIED BY OTHERS INSTALL PER INSTALLATION INSTRUCTIONS AND MN PLB CODE. COORDINATE WITH G.C.	2"	1-1/2"	-	3/4"
FWH	FREEZE PROOF WALL HADRANT - WOOD FORD #17	-	-	-	3/4"

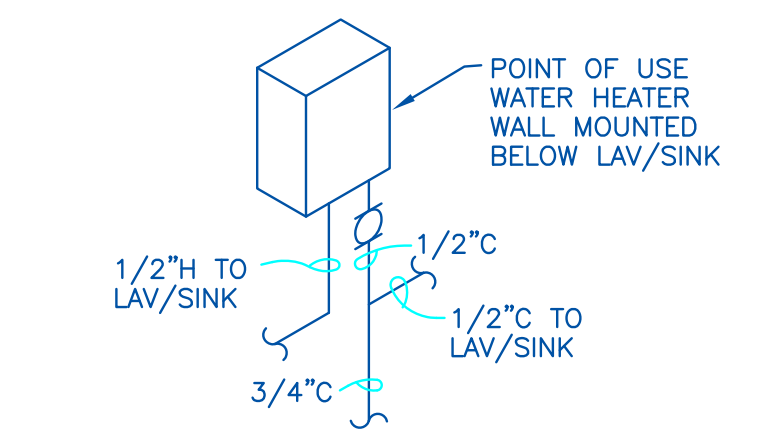
WATER HEATER SCHEDULE										
MARK	LOCATION	MANUFACTURER'S DESIGNATION	TYPE	ELEMENT WATTS	STOR CAP GAL	REC GPH AT 90° F RISE	VOLT \PH	EXPANSION TANK	ENERGY FACTORY/EFFICIENCY	REMARKS
WH-1	MECH RM	RHEEM - FURY #82V52-2	ELEC	4500	50	21	240/1	ST-5	0.91	CIRCULATING PUMP - GRUNDOS #UP15-10B7
WH-2	PREP RM	BOSCH - TRONIC #ES2.5	ELEC	1440	7.1	6.8	120/1	-	98%	POINT OF USE - MOUNTED BELOW SINK



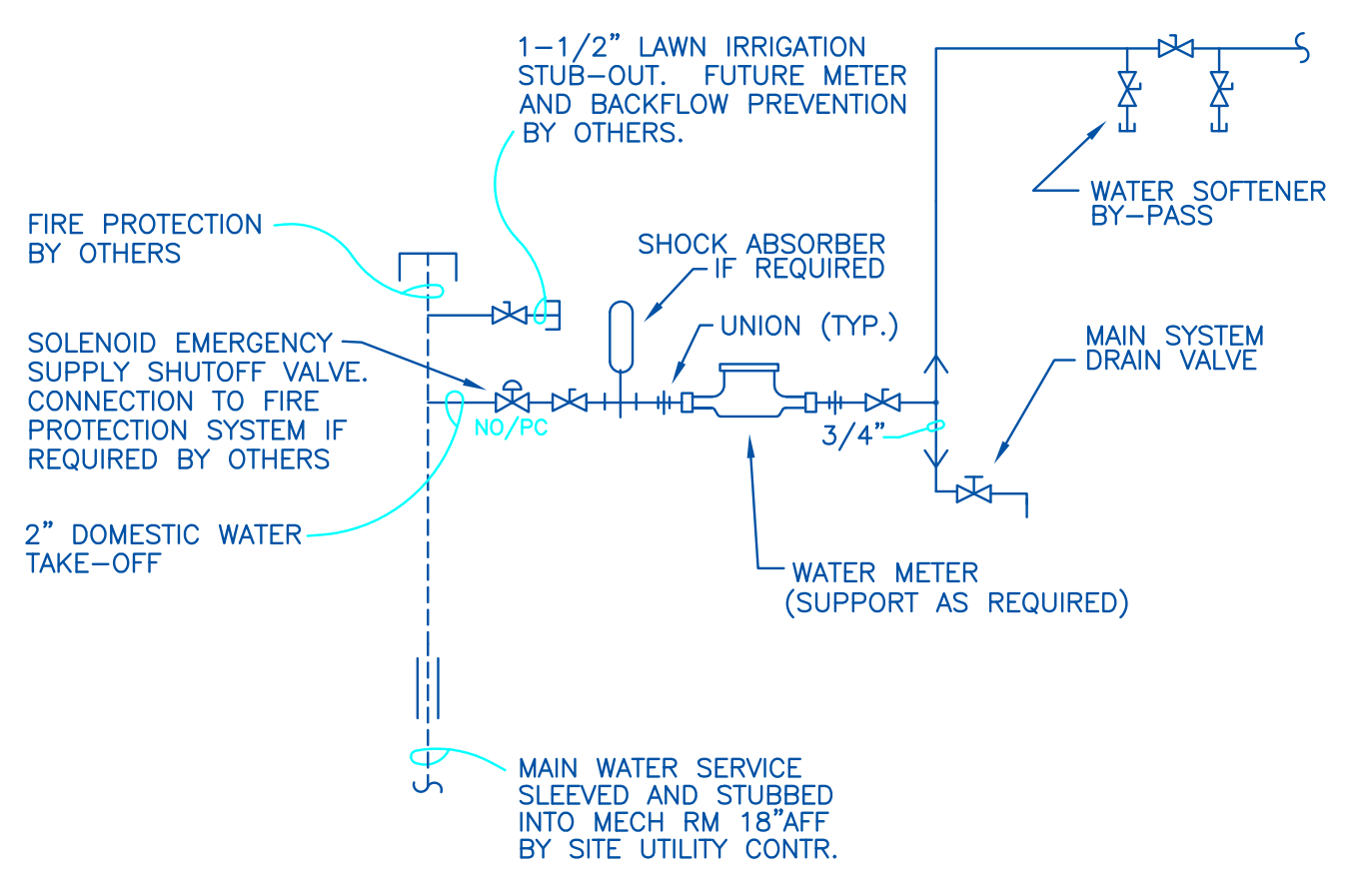
2 PLUMBING ISOMETRICS/RISERS  
NO SCALE DOMESTIC WATER



3 WATER HEATER DETAIL  
NO SCALE WH-1



4 WATER HEATER DETAIL  
NO SCALE WH-2



5 WATER SERVICE DETAIL  
NO SCALE

DATE: 11/16/17  
MICHAEL A. JOHNSON 081313PM

**BERD**  
Mechanical Contractors, Inc.  
55. Good, MN 55008  
Phone: 320-255-0947  
Fax: 320-255-0332

DATE	REVISION	DESCRIPTION	BY
11/16/17	1	AS SHOWN ON PLANS	MAJ
11/16/17	2	SCALE BY MAJ	MAJ
11/16/17	3	CHECKED BY MAJ	MAJ
11/16/17	4	DATE	BY

DATE: 11/16/17  
SCALE: AS SHOWN ON PLANS  
CHECKED BY: MAJ  
JOB NO. C-0283

NORTHWEST CHURCH OF CHRIST  
NEW HOPE, MN  
SCHEDULES / DETAILS