

SITE NOTES

- THE CONTRACTOR SHALL PROVIDE ALL LABOR, MATERIALS AND EQUIPMENT NECESSARY FOR A COMPLETE AND FUNCTIONAL ELECTRICAL SYSTEM.
- MATERIALS AND INSTALLATION SHALL COMPLY WITH CODES, UTILITY REQUIREMENTS, LAWS AND ORDINANCES OF FEDERAL, STATE, OSHA AND LOCAL GOVERNING BODIES HAVING JURISDICTION.
- THE CONTRACTOR SHALL COMPLY WITH ALL CODES AND STANDARDS APPLICABLE TO THIS PROJECT THAT ARE LISTED BUT NOT LIMITED TO: NEC, NFPA, NEMA, ANSI, IES, IEEE, NFPA LIFE SAFETY 101, ASHRAE 90.1, IECC ENERGY CODE AND IBC BUILDING CODE.
- PRIOR TO ANY DIGGING, TRENCHING, ETC. CONTACT ALL LOCAL UTILITY COMPANIES AND MUNICIPALITIES AND CONFIRM EXACT LOCATIONS OF ALL EXISTING UTILITIES.
- MATERIALS AND EQUIPMENT SHALL BE LISTED AND/OR LABELED BY UL OR ANOTHER NATIONALLY RECOGNIZED TESTING LABORATORY.
- ALL MATERIAL, EQUIPMENT, WIRING DEVICES, ETC SHALL BE NEW, UNLESS SPECIFICALLY NOTED AS EXISTING TO BE REUSED.
- ALL MATERIALS AND EQUIPMENT SHALL BE STORED, HANDLED, ERECTED, INSTALLED, CONNECTED, CLEANED, ADJUSTED, TESTED, CONDITIONED AND PLACED IN SERVICE IN ACCORDANCE WITH THE MANUFACTURERS DIRECTIONS AND RECOMMENDATIONS.
- COORDINATE THE UTILITY COMPANY SERVICE FEEDS AND INSTALLATION.
- ALL POLE FIXTURES TO BE LOCATED 4' AWAY FROM EDGE OF CURB.
- ALL EXTERIOR LIGHT FIXTURES TO BE CONNECTED TO A COMMON EQUIPMENT GROUND. USE #8, TYPE THWN.
- ALL CIRCUIT TO BE PLACED IN 1" CONDUITS UNLESS OTHERWISE NOTED. CIRCUIT TO USE COPPER WIRE, TYPE THWN.
- THE CONTROLLING LIGHTING CONTACTORS SHALL BE MOUNTED INSIDE THE BUILDING WITH TIME-CLOCK CONTROL & REMOTE PHOTOCELLS LOCATED ON THE EXTERIOR SIDE OF THE BUILDING WALL. INSTALL PHOTOCELLS AT LOCATIONS WHERE BUILDING OR OTHER OBSTRUCTIONS WILL NOT INTERFERE WITH THEIR PROPER OPERATION. FINAL BRANCH CIRCUIT SUPPLY CONNECTIONS WILL BE PROVIDED BY THE BUILDING ELECTRICAL CONTRACTORS.
- MIN. BURIAL DEPTH FOR THE LIGHTING CIRCUIT SHALL BE 24". A SLIGHT DECREASE IN DEPTH IS ALLOWED WITHIN 10' OF THE POLES.
- VERIFY CONSTRUCTION AREAS ON OTHER SITE PLANS FOR POTENTIAL OBSTACLES AND CONSTRUCTION LIMITS.

LIGHTING LEGEND

- | | | | |
|--|--|-----|--|
| | RECESSED 2x4 FLUORESCENT FIXTURE | | SINGLE POLE SWITCH |
| | RECESSED 2x2 FLUORESCENT FIXTURE | | 2-POLE SWITCH |
| | INDICATES NIGHTLIGHT FIXTURE | | 3-WAY SWITCH |
| | INDICATES EMERGENCY FIXTURE | | 4-WAY SWITCH |
| | INDICATES EMERGENCY/NIGHTLIGHT FIXTURE | | SWITCH W/PILOT LIGHT |
| | SURFACE MOUNT 1x4 FLUORESCENT FIXTURE | | WALL MOUNTED SINGLE LEVEL OCCUPANCY SENSOR |
| | HIGH BAY 2x4 FLUORESCENT FIXTURE | | WALL MOUNTED DUAL LEVEL OCCUPANCY SENSOR |
| | SURFACE WALL MOUNTED FLUORESCENT FIXTURE | | CEILING MOUNTED OCCUPANCY SENSOR |
| | SURFACE CEILING MOUNT FLUORESCENT FIXTURE | NL | INDICATES FIXTURE TO REMAIN ON FOR SECURITY PURPOSES |
| | RECESSED DOWNLIGHT | A,B | INDICATES LIGHT FIXTURE SWITCH-LEGS |
| | SURFACE WALL MOUNTED FIXTURE | P-X | INDICATES PANEL AND CIRCUIT NUMBER |
| | SURFACE MOUNTED FIXTURE | (1) | INDICATES LIGHT FIXTURE TYPE |
| | SURFACE MOUNTED PENDANT FIXTURE | EX | INDICATES EXISTING FIXTURE |
| | OUTSIDE POLE-MOUNT LIGHT FIXTURE | RL | INDICATES RELOCATED FIXTURE |
| | EXTERIOR GROUND MOUNTED LIGHT FIXTURE | TC | INDICATES FIXTURE CONTROLLED BY TIMECLOCK |
| | EMERGENCY LIGHTING FIXTURE | EM | INDICATES EMERGENCY FIXTURE |
| | LED EXIT SIGN-SHADED AREA INDICATES ILLUMINATED FACE | | |
| | LED EXIT/EMERGENCY SIGN-SHADED AREA INDICATES ILLUMINATED FACE | | |
| | EXTERIOR EMERGENCY EGRESS LIGHT | | |

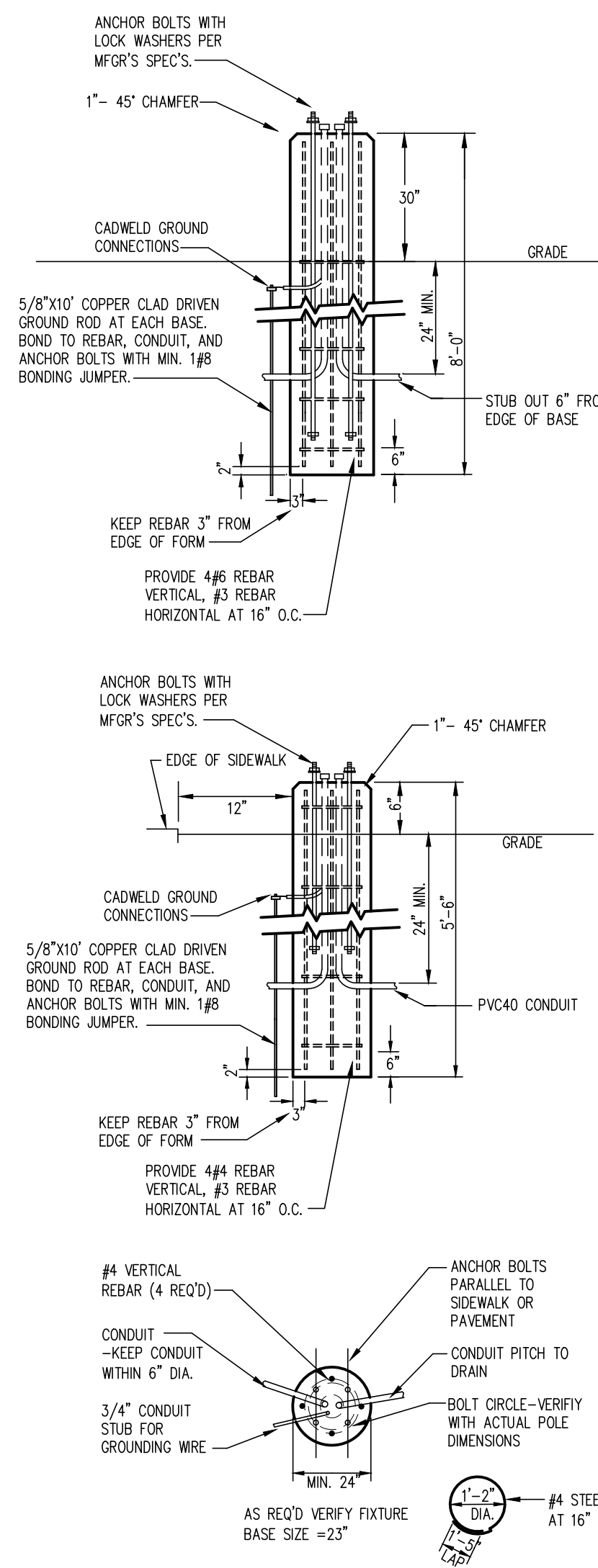
LIGHTING FIXTURE SCHEDULE

TYPE	LAMPS	WATTAGE	DESCRIPTION	NOTES
AA	-	78	LED POLE FIXTURE, TYPE III OPTICS, 20' POLE	-
BB	-	78	LED POLE FIXTURE, TYPE II OPTICS, 20' POLE	-
CC	-	18	LED SMALL WALL PACK	-
DD	-	26	LED LARGE WALL PACK	-
EE	-	105	LED POLE FIXTURE, TYPE IV OPTICS, 15' POLE	-

NOTES:

POWER & COMMUNICATION LEGEND

- | | | | |
|--|----------------------------|----|---|
| | 120V DUPLEX OUTLET | | MOTOR CONNECTION |
| | 120V QUAD OUTLET | | ELECTRICAL DISCONNECT |
| | 240 VOLT RECEPTACLE | | ELECTRICAL STARTER DISCONNECT |
| | DATA/COMMUNICATIONS OUTLET | | ELECTRICAL CONNECTION W/NON-FUSED DISCONNECT |
| | TELEPHONE OUTLET | | ELECTRICAL CONNECTION W/FUSED DISCONNECT |
| | TELEVISION OUTLET | | ELECTRICAL CONNECTION W/WEATHER PROOF DISCONNECTS |
| | DATA/TV COMBO OUTLET | | ELECTRICAL CONNECTION W/20A SWITCH FUSE |
| | TELE/TV OUTLET | | PANELBOARD |
| | FLOOR OUTLET | | THERMOSTAT MOUNTED AT 48" A.F.F. |
| | JUNCTION BOX | EX | INDICATES EXISTING DEVICE |
| | PUSHBUTTON STATION | RL | INDICATES RELOCATED DEVICE |
| | SPEAKER | | NURSE CALL LIGHT |
| | TIME CLOCK | | |
| | NURSE CALL PULL STATION | | |



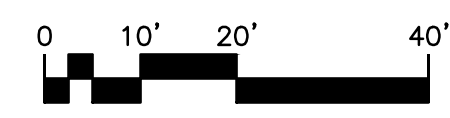
- NOTE:
- USE MFR'S DIMENSIONS FOR EXACT ANCHOR BOLT AND COVER PLACEMENT.
 - INSTALL INLINE FUSES IN EACH UNGROUNDED CONDUCTOR WITHIN POLE BASE HAND HOLE.
 - TROWEL FINISH EXPOSED PORTION OF BASE TO REMOVE/COVER FORM MARKS.

2 POLE BASE DETAIL
E1.1 NOT TO SCALE

SEE FLOOR PLAN FOR BUILDING MOUNTED LIGHT FIXTURE TYPES



1 ELECTRICAL SITE PLAN
E1.1 SCALE: 1" = 20'



DRAWN BY: DJK	CHECKED BY: TJA	DATE: 6/16/16	DWG FILE:	REF FILE:	JOB NUMBER: 508-135-16	REVISION DESCRIPTION:	NAME:	8/5/16	DATE:
---------------	-----------------	---------------	-----------	-----------	------------------------	-----------------------	-------	--------	-------

BERD! ELECTRIC LLC
 3308 Southway Drive • St. Cloud, MN 56301
 Phone: 320-656-0847
 Fax: 320-656-0312

AC/a
 AUTH CONSULTING / ASSOCIATES

BRANCH OFFICE
 2820 Babes Street
 Suite 101
 Hudson, WI 54016
 Tel: 715-381-5277

CORPORATE OFFICE
 406 Technology Drive E.
 Suite A
 Menomonie, WI 54751
 Tel: 715-232-9000
 Fax: 715-232-9082

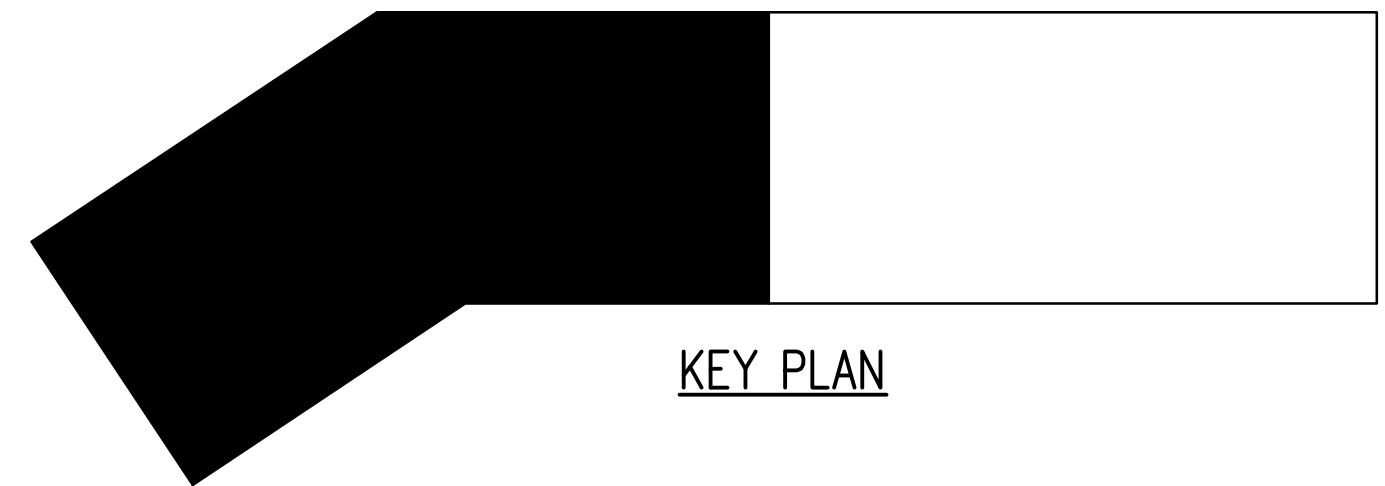
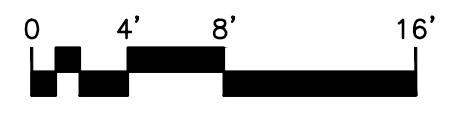
PROJECT:
**PROPOSED PROJECT FOR:
 RIVERS RIDGE LUXURY APARTMENTS**
 RED WING, MN

ELECTRICAL SITE PLAN

SHEET NO.
E1.1



1 GARAGE LIGHTING & POWER PLAN
 E2.1 SCALE: 1/8" = 1'-0"



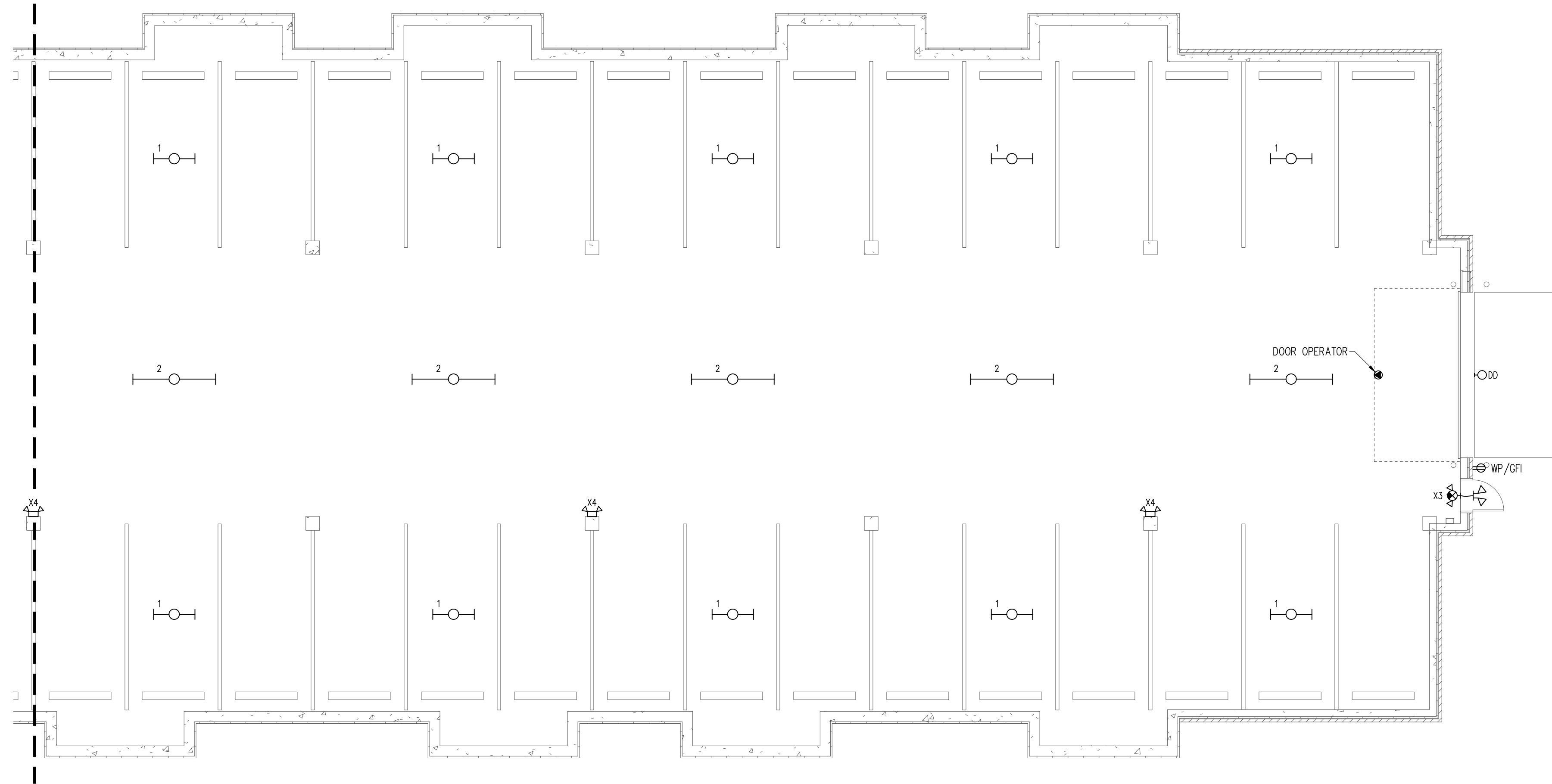
KEY PLAN

PROJECT:	PROPOSED PROJECT FOR: RIVERS RIDGE LUXURY APARTMENTS RED WING, MN
SHEET NO.:	E2.1
DATE:	1/17/17
CHECKED BY:	TJA
DRAWN BY:	DJK
REF FILE:	
DWG FILE:	
REVISION DESCRIPTION:	
JOB NUMBER:	508-135-16
NAME:	
DATE:	

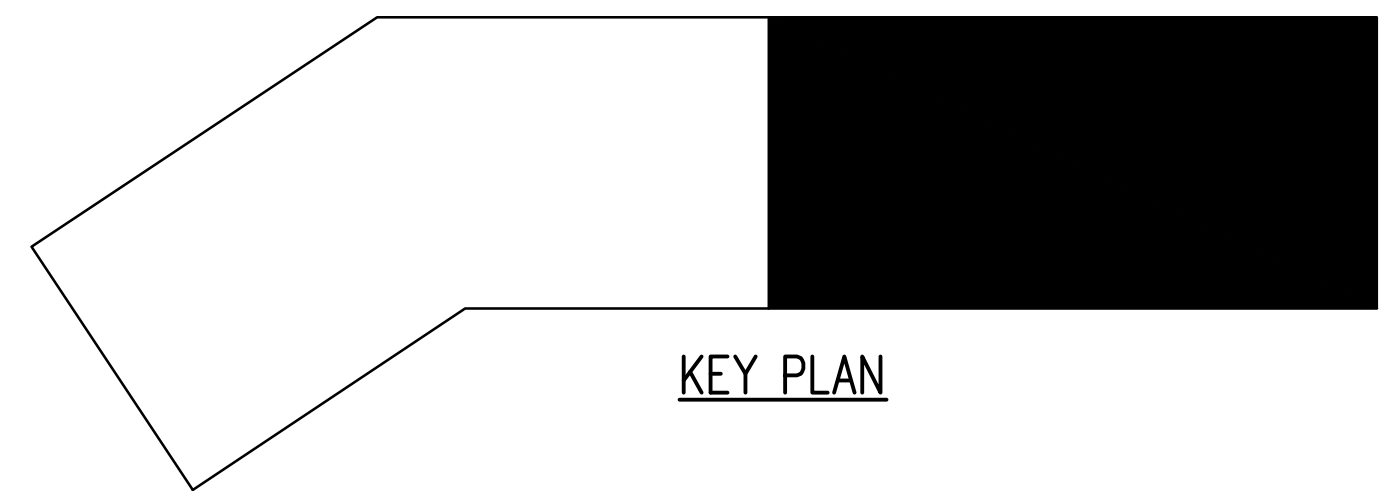
BEPD!
ELECTRIC LLC
 5308 Southway Drive • St. Cloud, MN 56301
 Phone: 320-666-8477
 Fax: 320-666-0312

A.C/a
 Auth Consulting/associates
 CORPORATE OFFICE
 406 Technology Drive B, Suite A
 Menomonie, WI 54751
 Tel: 715-232-8400 Fax: 715-232-9402
 BRANCH OFFICE
 2920 Babo Street, Suite 101
 Hudson, WI 54016
 Tel: 715-381-5277

PROJECT:	PROPOSED PROJECT FOR: RIVERS RIDGE LUXURY APARTMENTS RED WING, MN
SHEET NO.:	E2.1
DATE:	1/17/17
CHECKED BY:	TJA
DRAWN BY:	DJK
REF FILE:	
DWG FILE:	
REVISION DESCRIPTION:	
JOB NUMBER:	508-135-16
NAME:	
DATE:	



1 GARAGE LIGHTING & POWER PLAN
 E2.2 SCALE: 1/8" = 1'-0" 0 4' 8' 16'



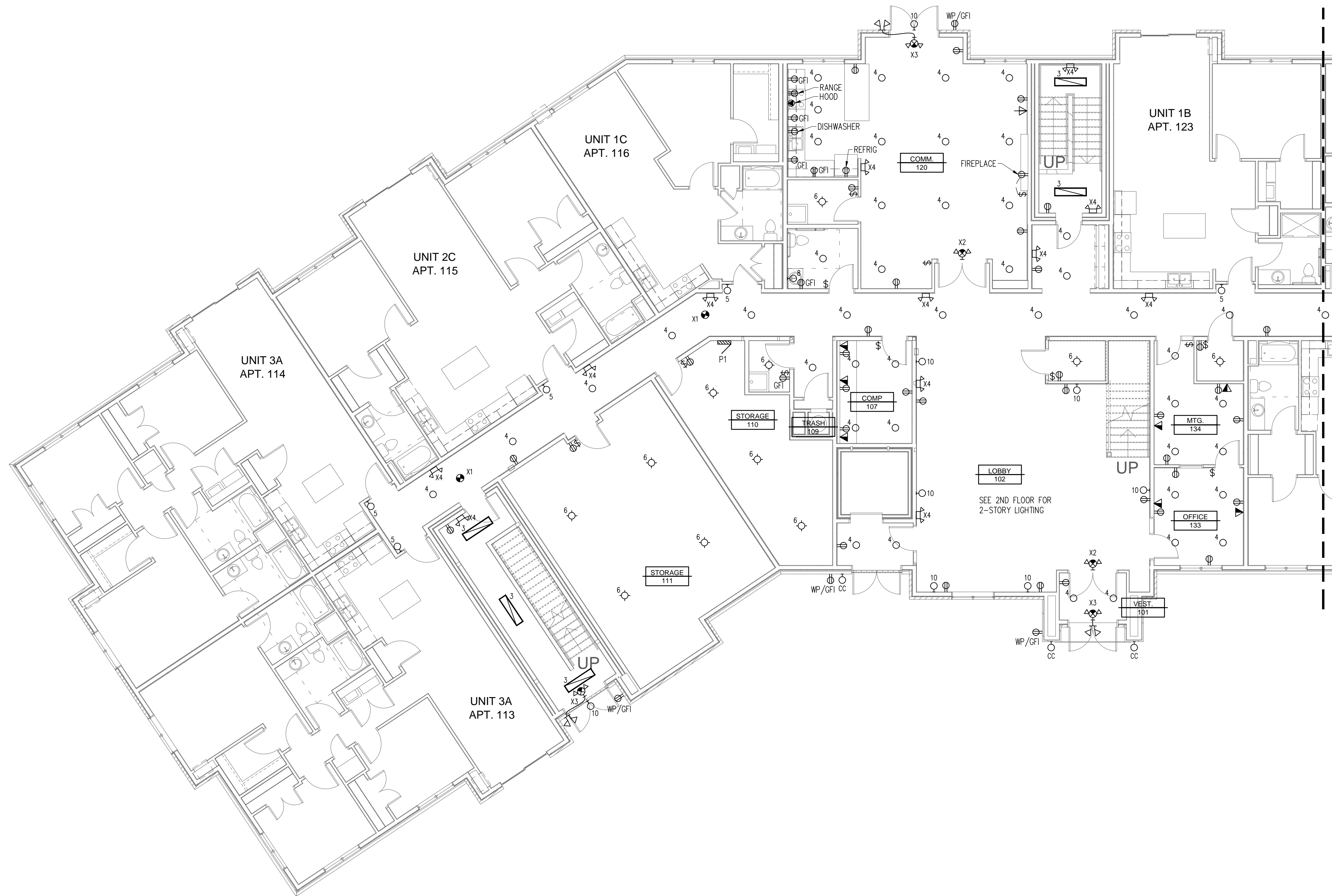
KEY PLAN

DRAWN BY: DJK	CHECKED BY: TJA	DATE: 1/17/17	DWG FILE:	REF FILE:	JOB NUMBER: 508-135-16	REVISION DESCRIPTION:	NAME:	DATE:
---------------	-----------------	---------------	-----------	-----------	------------------------	-----------------------	-------	-------

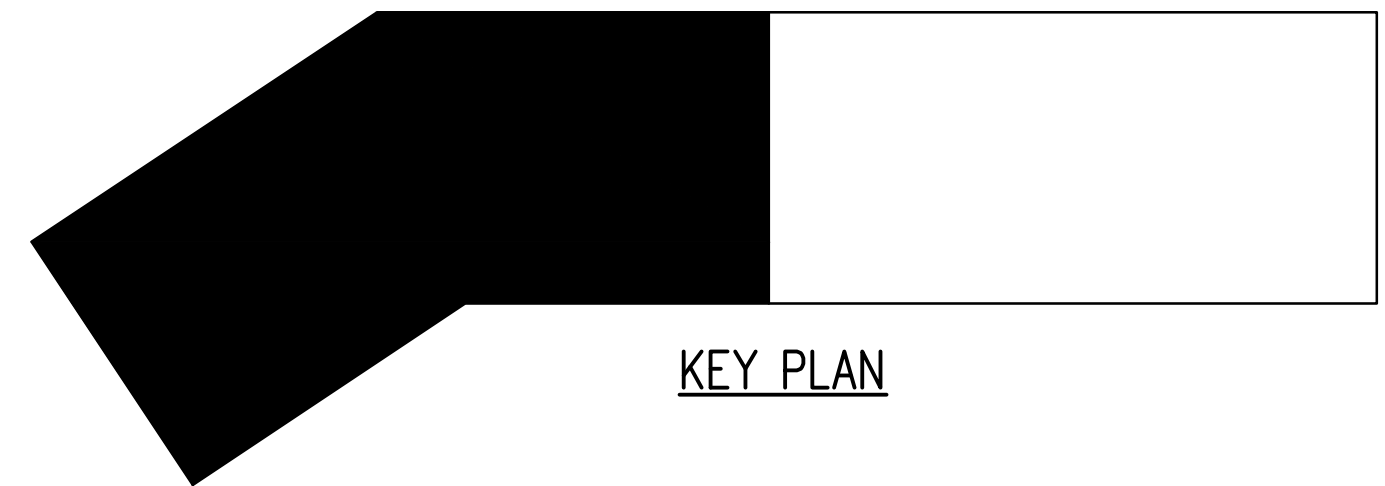
BERD!
ELECTRIC LLC
 5308 Southway Drive • St. Cloud, MN • 56301
 Phone: 320-656-8477
 Fax: 320-656-0312

A.C/a
 AUTH CONSULTING/ASSOCIATES
 CORPORATE OFFICE
 406 Technology Drive B, Suite A
 Menomonie, WI 54751
 Tel: 715-232-8400
 Fax: 715-232-9402
 BRANCH OFFICE
 2920 Balke Street
 Suite 101
 Hudson, WI 54016
 Tel: 715-381-5277

PROJECT: PROPOSED PROJECT FOR:
 RIVERS RIDGE LUXURY APARTMENTS
 RED WING, MN
 GARAGE LIGHTING & POWER PLAN



1 1ST FLOOR LIGHTING & POWER PLAN
 SCALE: 1/8" = 1'-0"
 0 4' 8' 16'



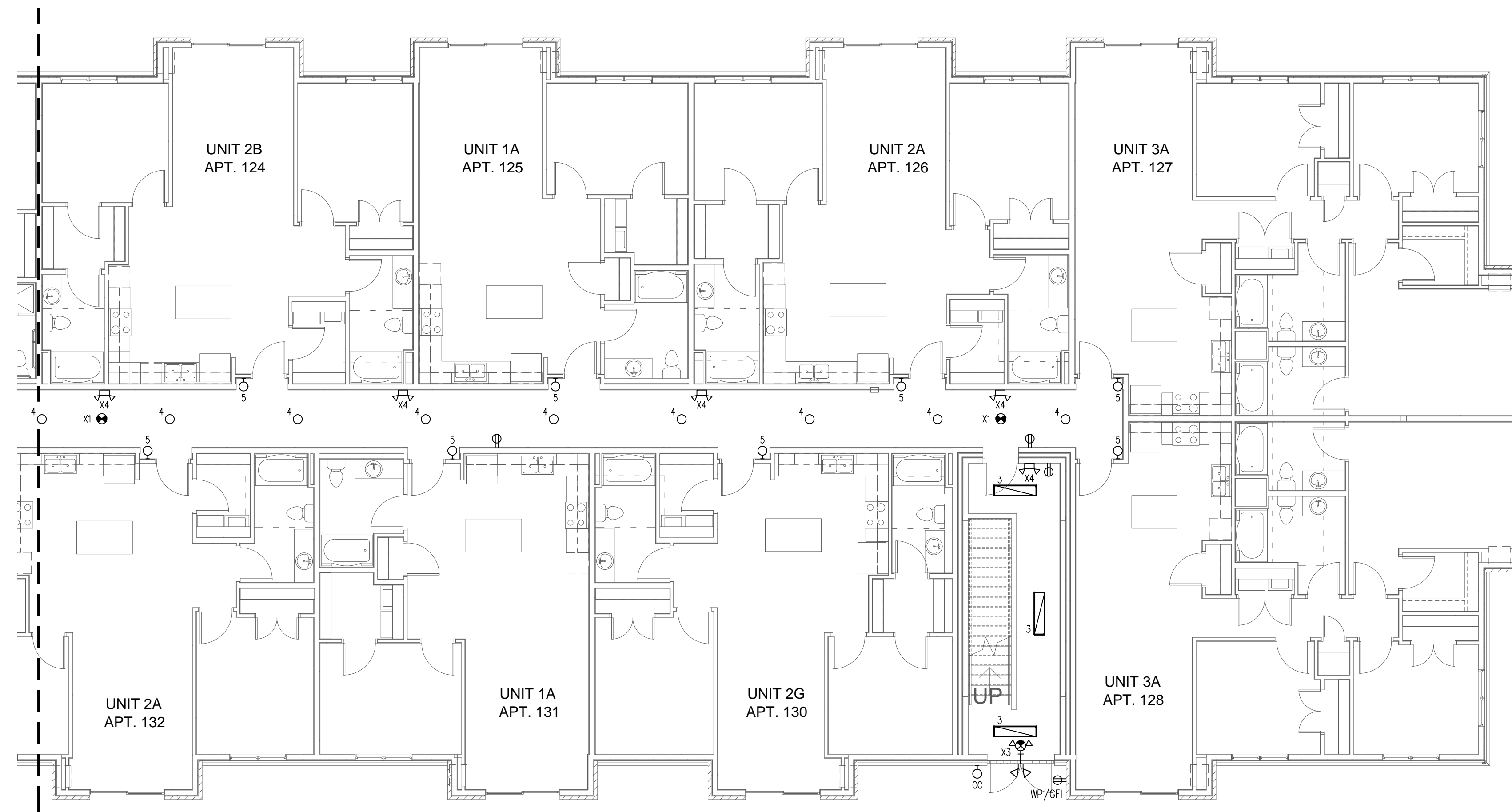
KEY PLAN

PROJECT:	PROPOSED PROJECT FOR: RIVERS RIDGE LUXURY APARTMENTS RED WING, MN
SHEET NO.:	E2.3
DATE:	1/17/17
CHECKED BY:	TJA
DRAWN BY:	DJK
DATE:	1/17/17
DWG FILE:	
REF FILE:	
JOB NUMBER:	508-135-16
REVISION DESCRIPTION:	
NAME:	
DATE:	

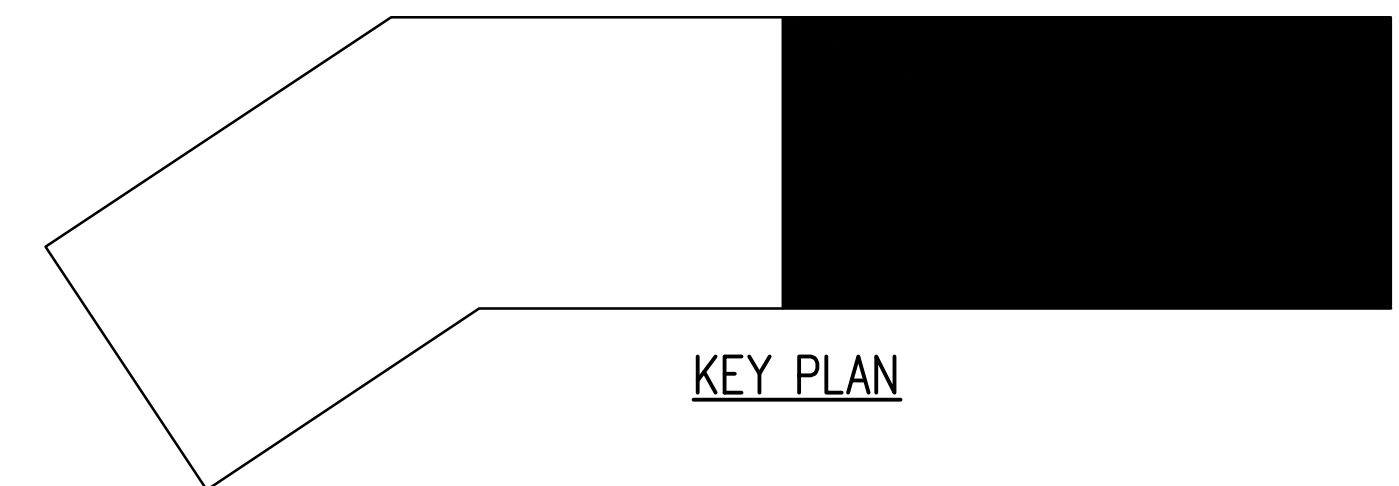
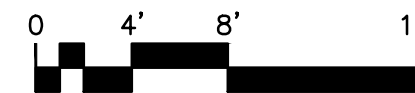
BERD!
ELECTRIC LLC
 5308 Southway Drive • St. Cloud, MN 56301
 Phone: 320-666-8477
 Fax: 320-666-0312

A.C/a
 AUTH CONSULTING / ASSOCIATES
 CORPORATE OFFICE
 406 Technology Drive E.
 Suite A
 Menomonie, WI 54751
 Tel: 715-232-8400
 Fax: 715-232-9402
 BRANCH OFFICE
 2920 Balke Street
 Suite 101
 Hudson, WI 54016
 Tel: 715-381-5277

PROPOSED PROJECT FOR:
 RIVERS RIDGE LUXURY APARTMENTS
 RED WING, MN
 1ST FLOOR LIGHTING & POWER PLAN
 SHEET NO. E2.3



1 1ST FLOOR LIGHTING & POWER PLAN
 E2.4 SCALE: 1/8" = 1'-0"



KEY PLAN

BEPD!
ELECTRIC LLC
 5308 Southway Drive • St. Cloud, MN 56301
 Phone: 320-656-8477
 Fax: 320-656-0312

CORPORATE OFFICE
 406 Technology Drive E.
 Suite A
 Menomonie, WI 54751
 Tel: 715-232-8400
 Fax: 715-232-9402

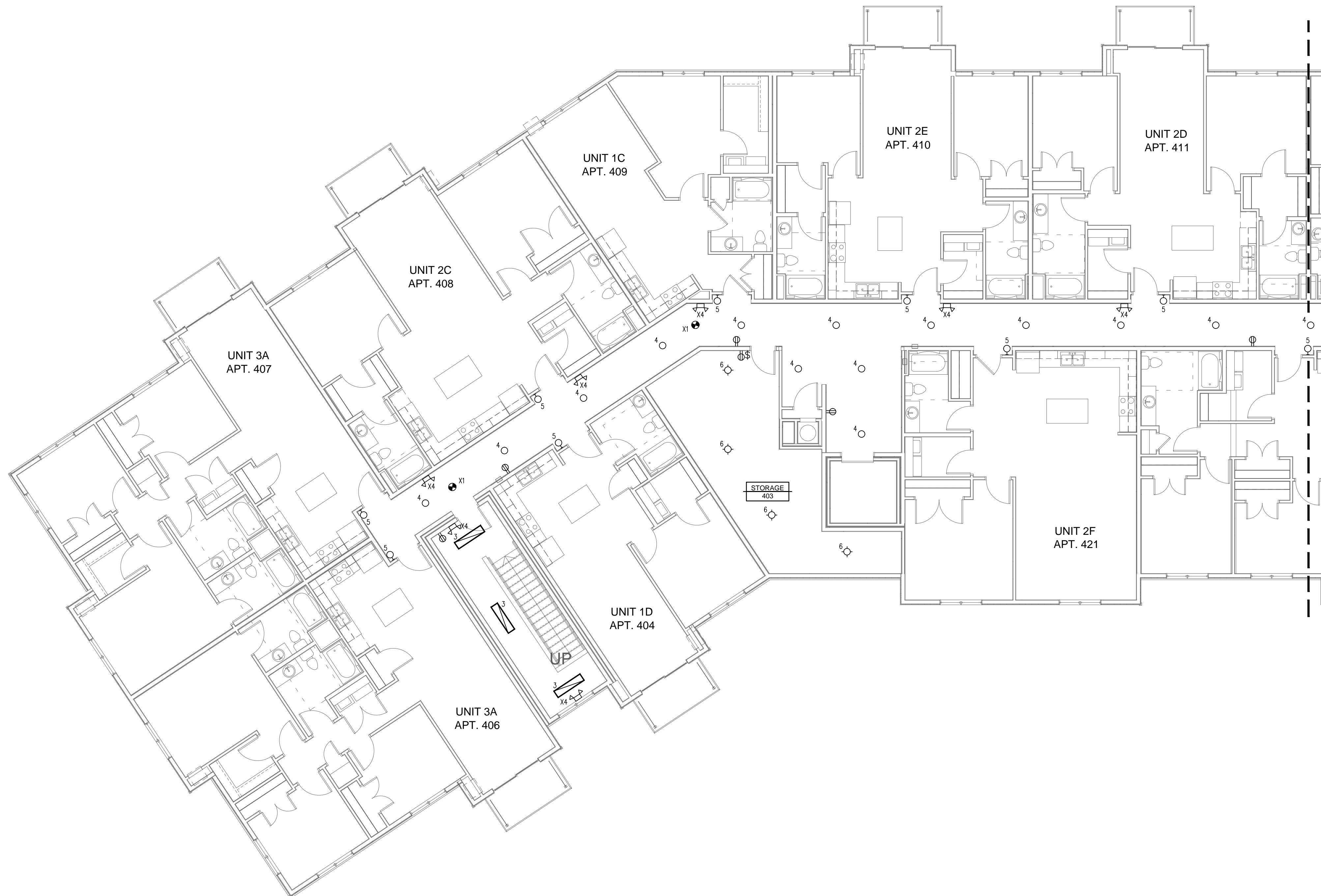


Auth Consulting/associates

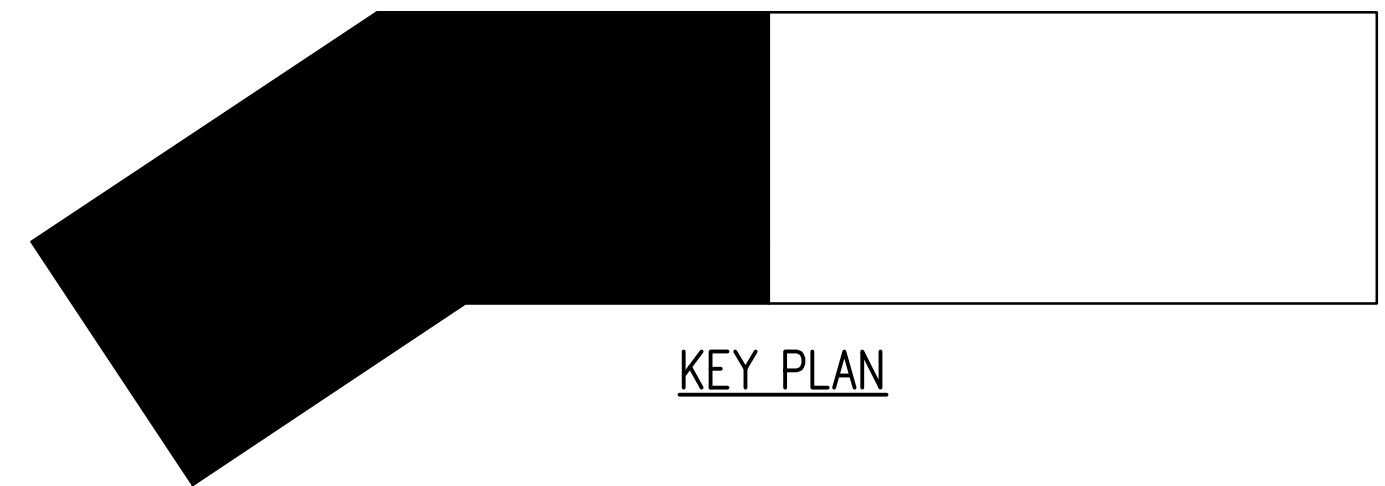
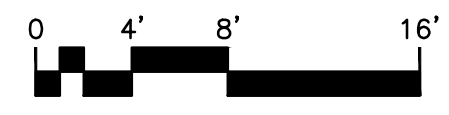
PROJECT:
 PROPOSED PROJECT FOR:
 RIVERS RIDGE LUXURY APARTMENTS
 RED WING, MN
 1ST FLOOR LIGHTING & POWER PLAN

SHEET NO.
E2.4

DRAWN BY: DJK	REVISION DESCRIPTION:	NAME:	DATE:
CHECKED BY: TJA			
DATE: 1/17/17			
DWG FILE:			
REF FILE:			
JOB NUMBER: 508-135-16			



1 4TH FLOOR LIGHTING & POWER PLAN
 E2.9 SCALE: 1/8" = 1'-0"



KEY PLAN

DRAWN BY: DJK	CHECKED BY: TJA	DATE: 1/17/17	DWG FILE:	REF FILE:	JOB NUMBER: 508-135-16	REVISION DESCRIPTION:	NAME:	DATE:
---------------	-----------------	---------------	-----------	-----------	------------------------	-----------------------	-------	-------

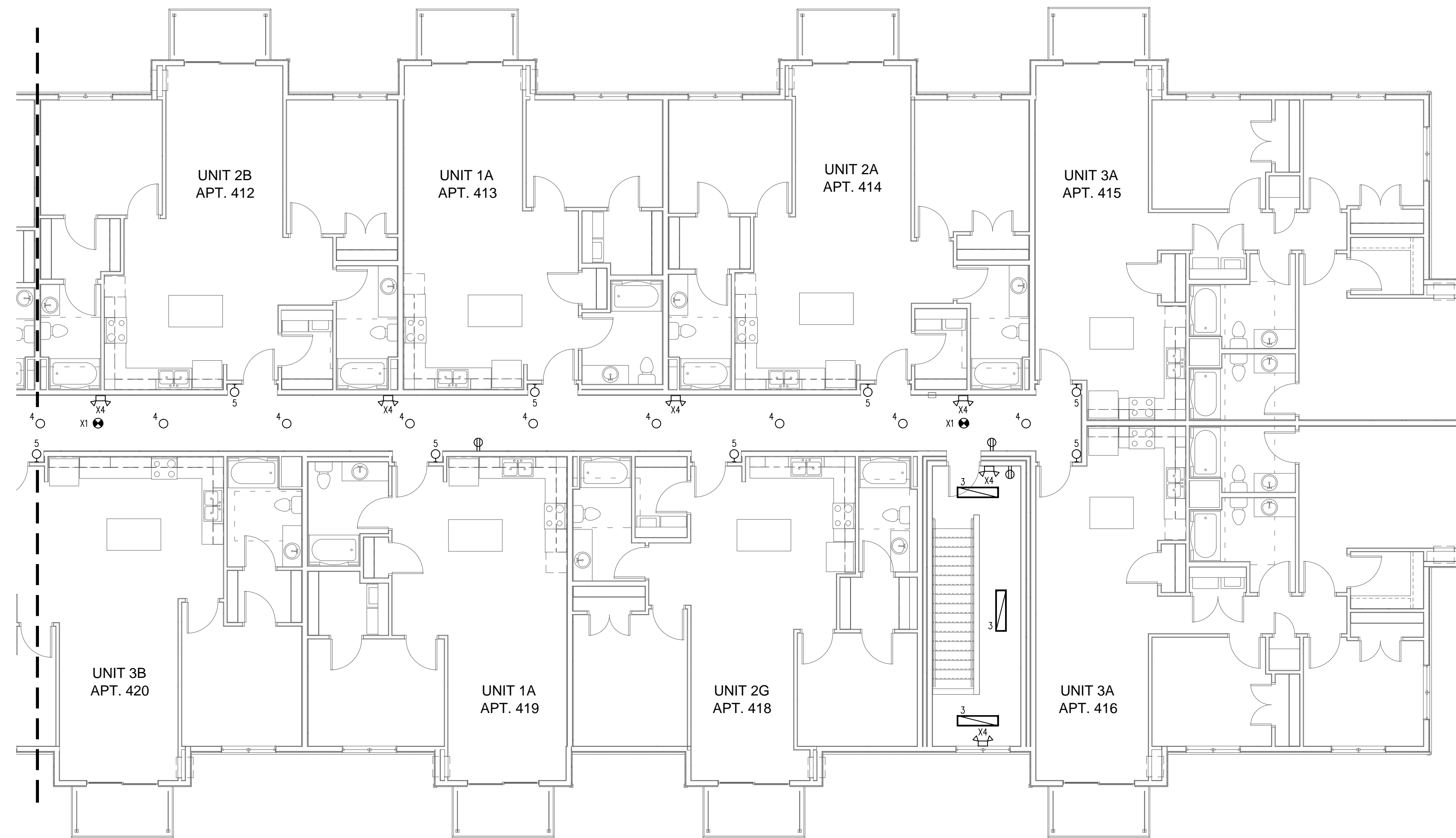
BERD!
ELECTRIC LLC
 5308 Southway Drive • St. Cloud, MN 56301
 Phone: 320-656-8477
 Fax: 320-656-0312

A.C/a
 AUTH CONSULTING/ASSOCIATES

CORPORATE OFFICE
 406 Technology Drive B, Suite A
 Menomonie, WI 54751
 Tel: 715-232-8400 Fax: 715-232-9402

BRANCH OFFICE
 2920 Balise Street, Suite 101
 Hudson, WI 54016
 Tel: 715-381-5277

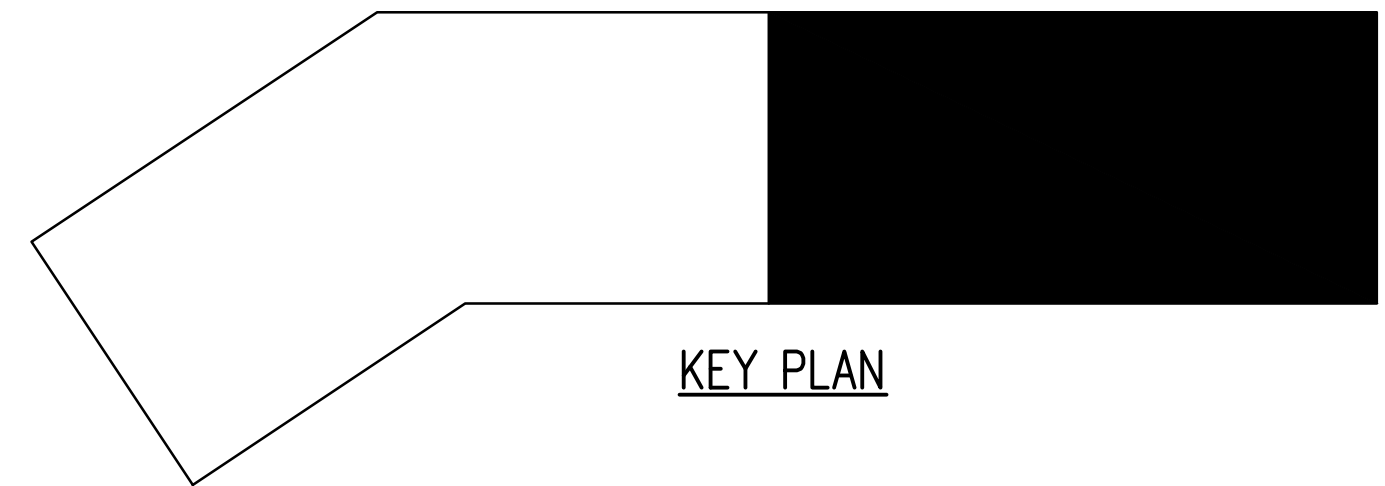
PROJECT: PROPOSED PROJECT FOR:
 RIVERS RIDGE LUXURY APARTMENTS
 RED WING, MN
 4TH FLOOR LIGHTING & POWER PLAN



1
E2.10

4TH FLOOR LIGHTING & POWER PLAN

SCALE: 1/8" = 1'-0"



DRAWN BY: DJK	CHECKED BY: TJA	DATE: 1/17/17	DWG FILE:	REF FILE:	JOB NUMBER: 508-135-16	REVISION DESCRIPTION:	NAME:	DATE:
---------------	-----------------	---------------	-----------	-----------	------------------------	-----------------------	-------	-------

BEPD!
ELECTRIC LLC

5308 Southway Drive • St. Cloud, MN 56301
 Phone: 320-656-8647
 Fax: 320-656-0312

A.C/a

Auth Consulting/associates

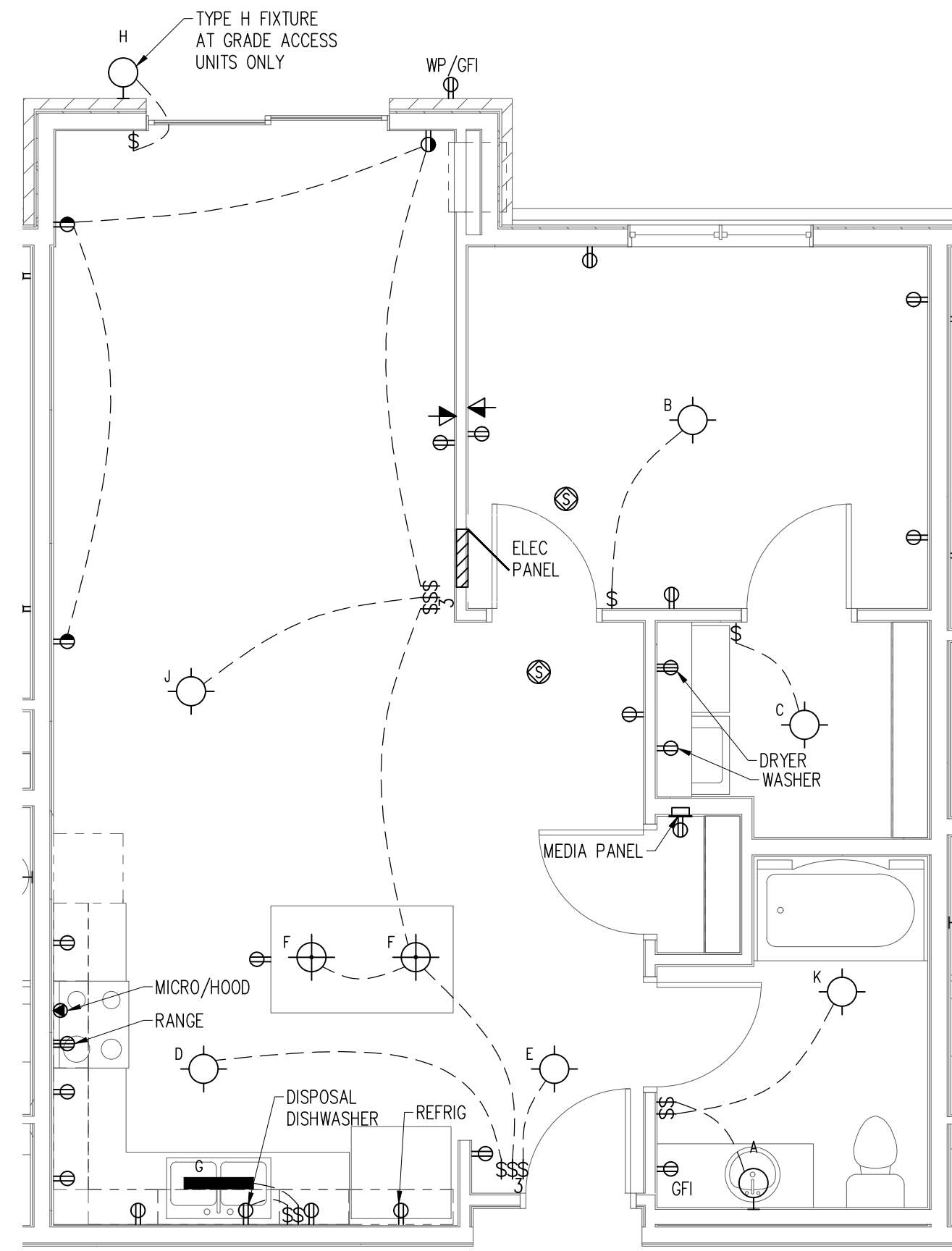
CORPORATE OFFICE
 406 Technology Drive B,
 Suite A
 Menomonie, WI 54751
 Tel: 715-232-8400
 Fax: 715-232-9402

BRANCH OFFICE
 2920 Babo Street,
 Suite 101
 Hudson, WI 54016
 Tel: 715-381-5277

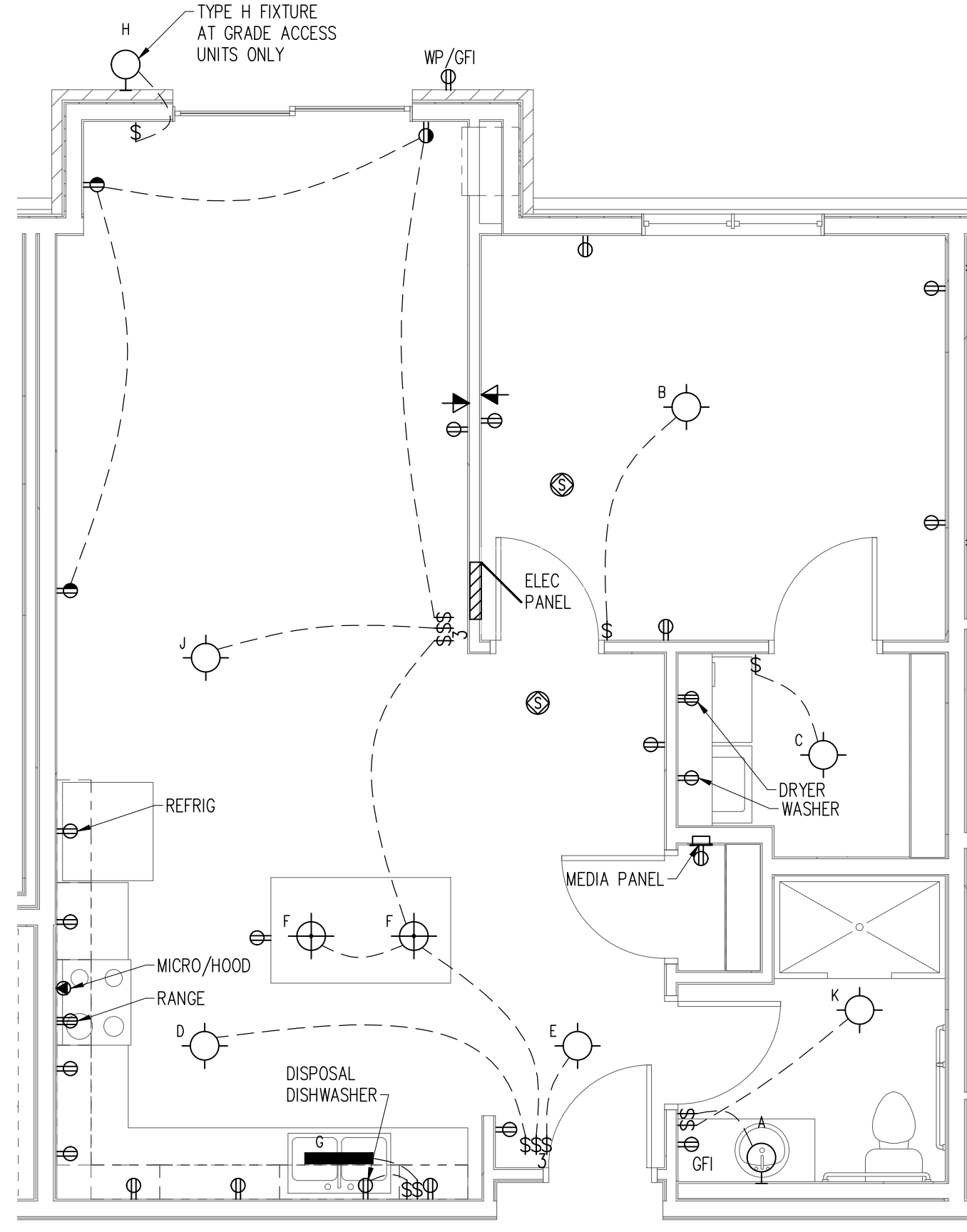
PROJECT:
**PROPOSED PROJECT FOR:
 RIVERS RIDGE LUXURY APARTMENTS**
 RED WING, MN

SHEET NO.
E2.10

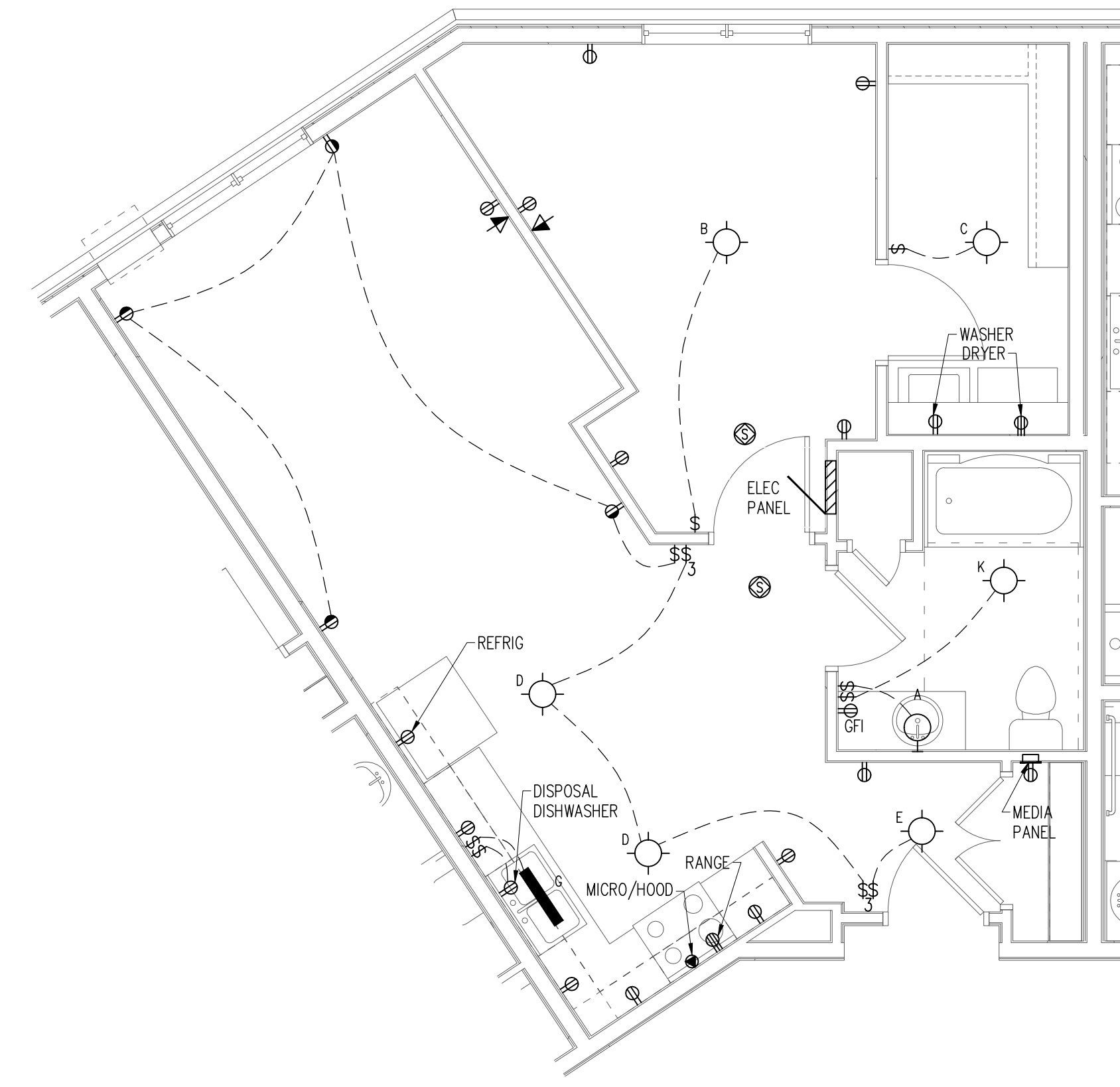
4TH FLOOR LIGHTING & POWER PLAN



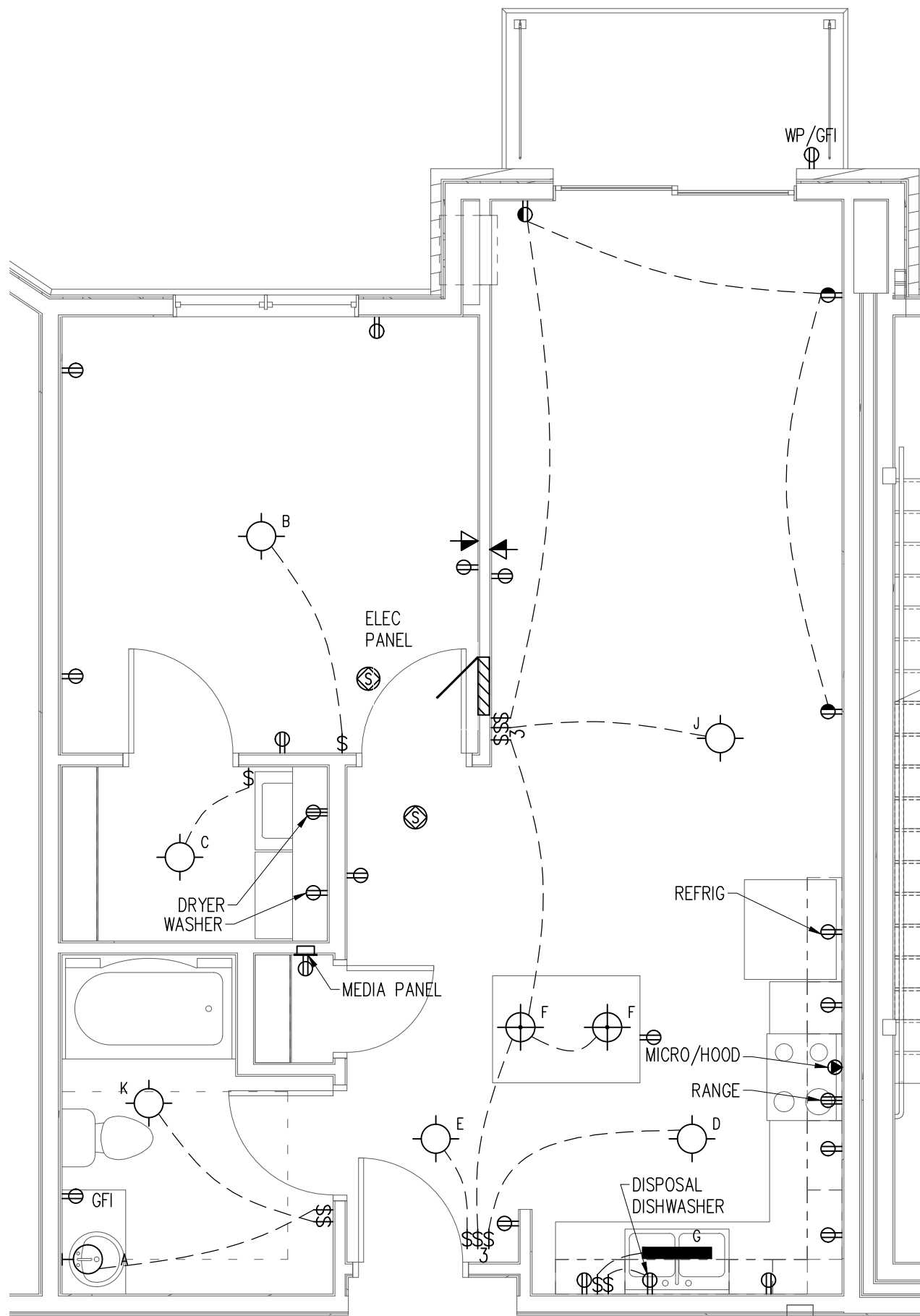
1 TYPICAL UNIT 1A
E3.1 SCALE: 1/4" = 1'-0" 0 2' 4' 8'



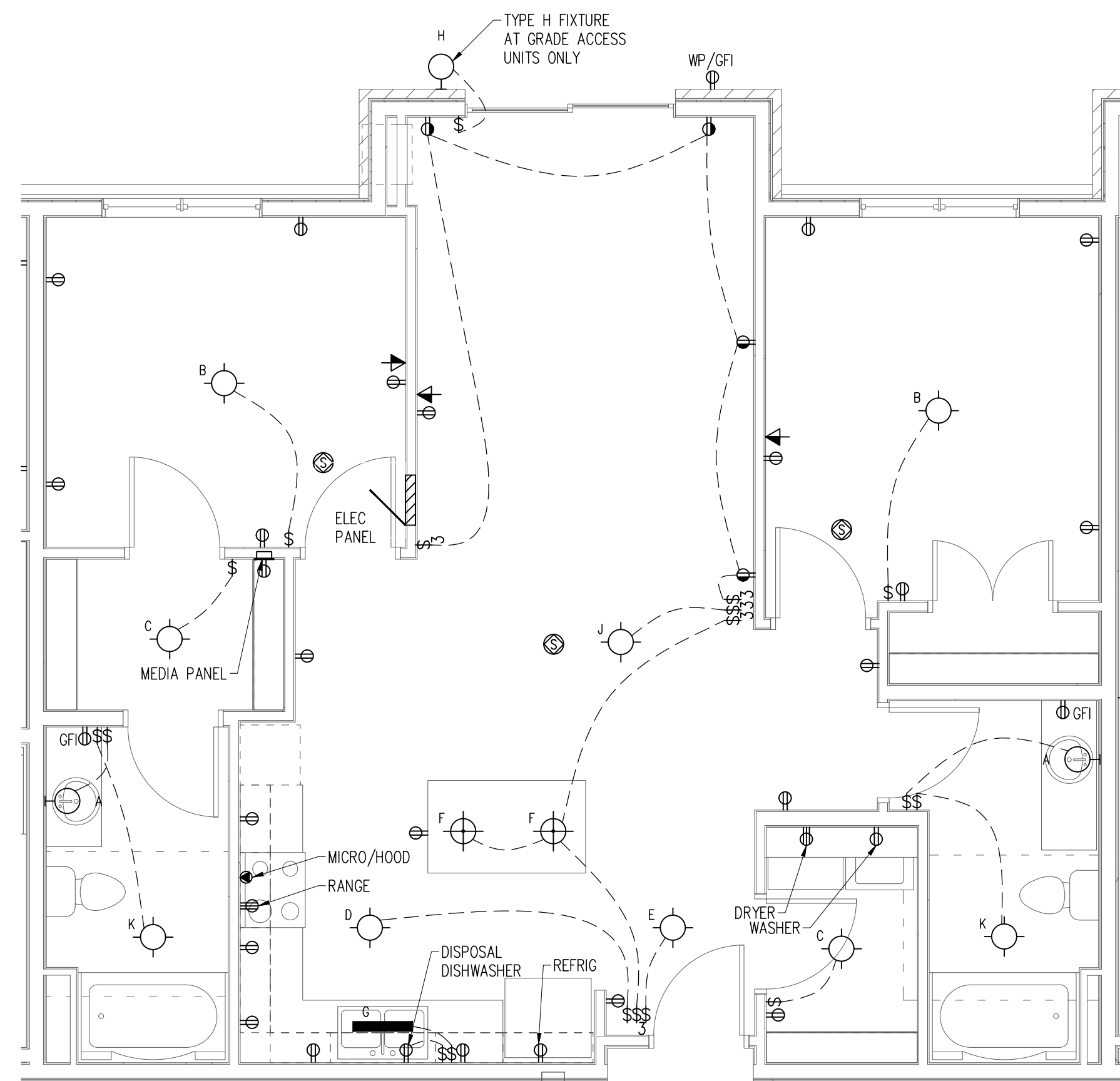
2 TYPICAL UNIT 1B
E3.1 SCALE: 1/4" = 1'-0" 0 2' 4' 8'



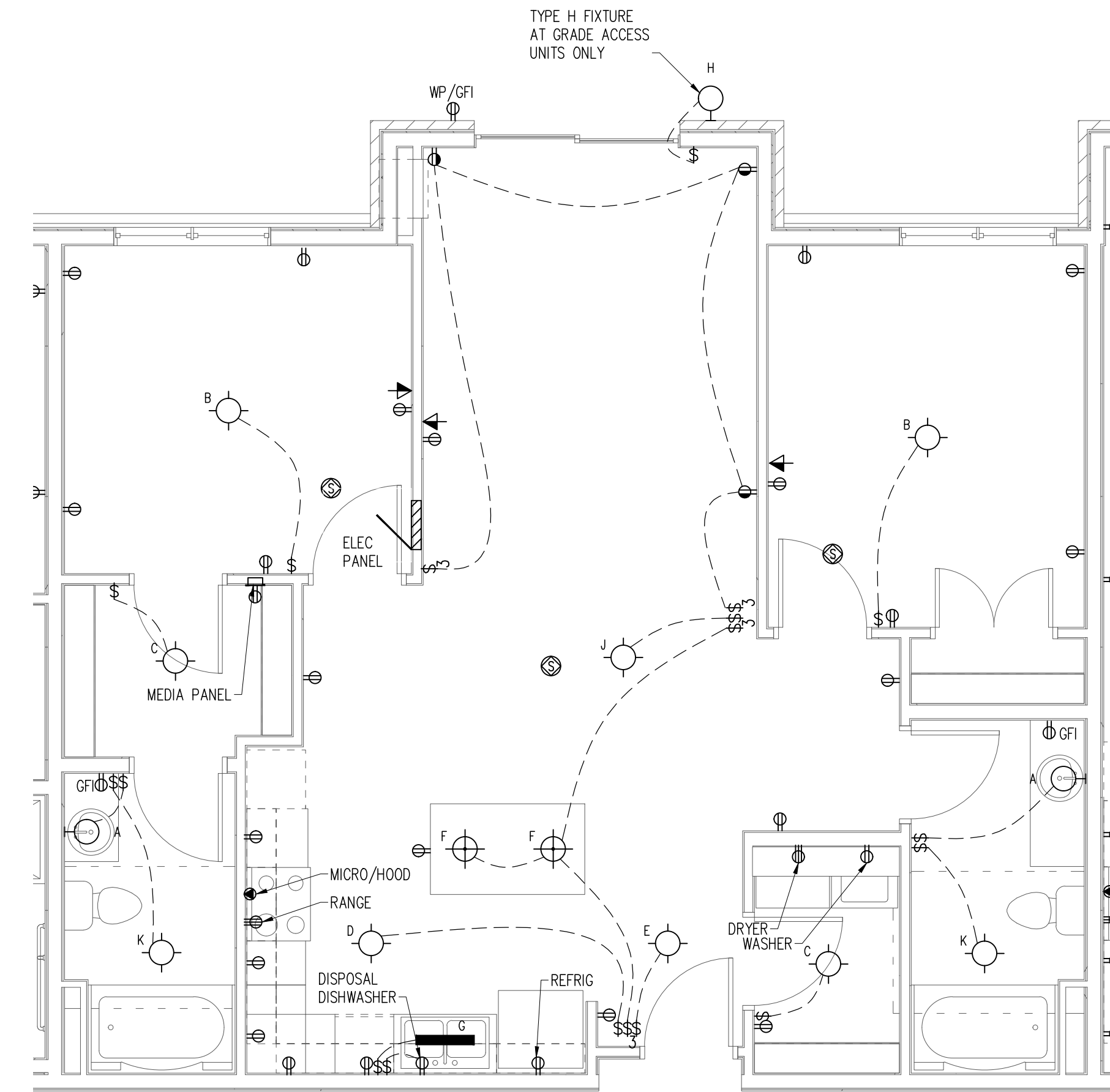
3 TYPICAL UNIT 1C
E3.1 SCALE: 1/4" = 1'-0" 0 2' 4' 8'



4 TYPICAL UNIT 1D
E3.1 SCALE: 1/4" = 1'-0" 0 2' 4' 8'



5 TYPICAL UNIT 2A
E3.1 SCALE: 1/4" = 1'-0" 0 2' 4' 8'



6 TYPICAL UNIT 2B
E3.1 SCALE: 1/4" = 1'-0" 0 2' 4' 8'

DRAWN BY: DJK	CHECKED BY: TJA	DATE: 1/17/17	DWG FILE:	REF FILE:	JOB NUMBER: 508-135-16	NAME:	DATE:
---------------	-----------------	---------------	-----------	-----------	------------------------	-------	-------

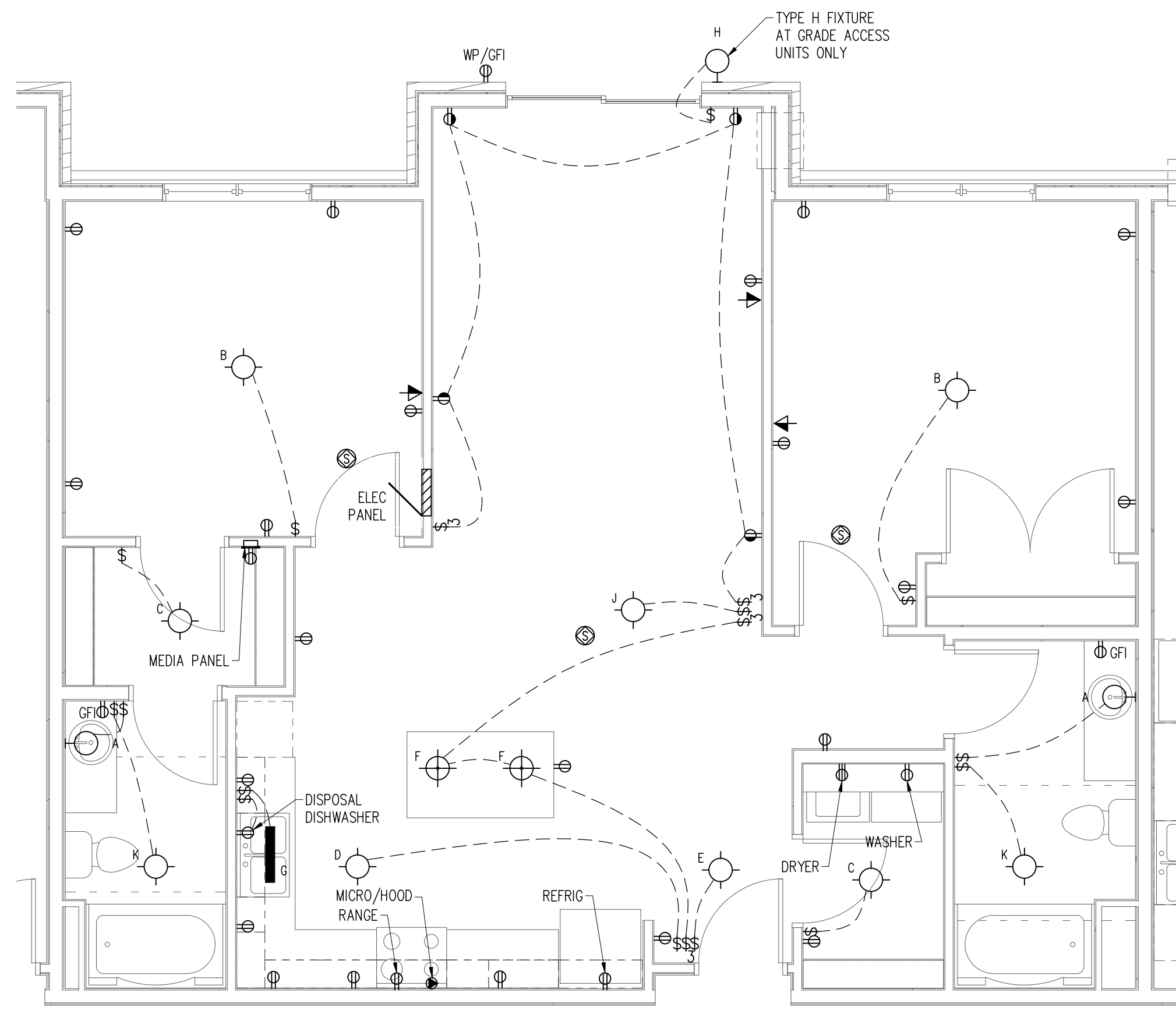
BERP! ELECTRIC LLC
 5308 Southway Drive • St. Cloud, MN 56301
 Phone: 320-666-0647
 Fax: 320-666-0312

BRANCH OFFICE
 2920 Babo Street
 Suite 101
 Hudson, WI 54016
 Tel 715-381-5277

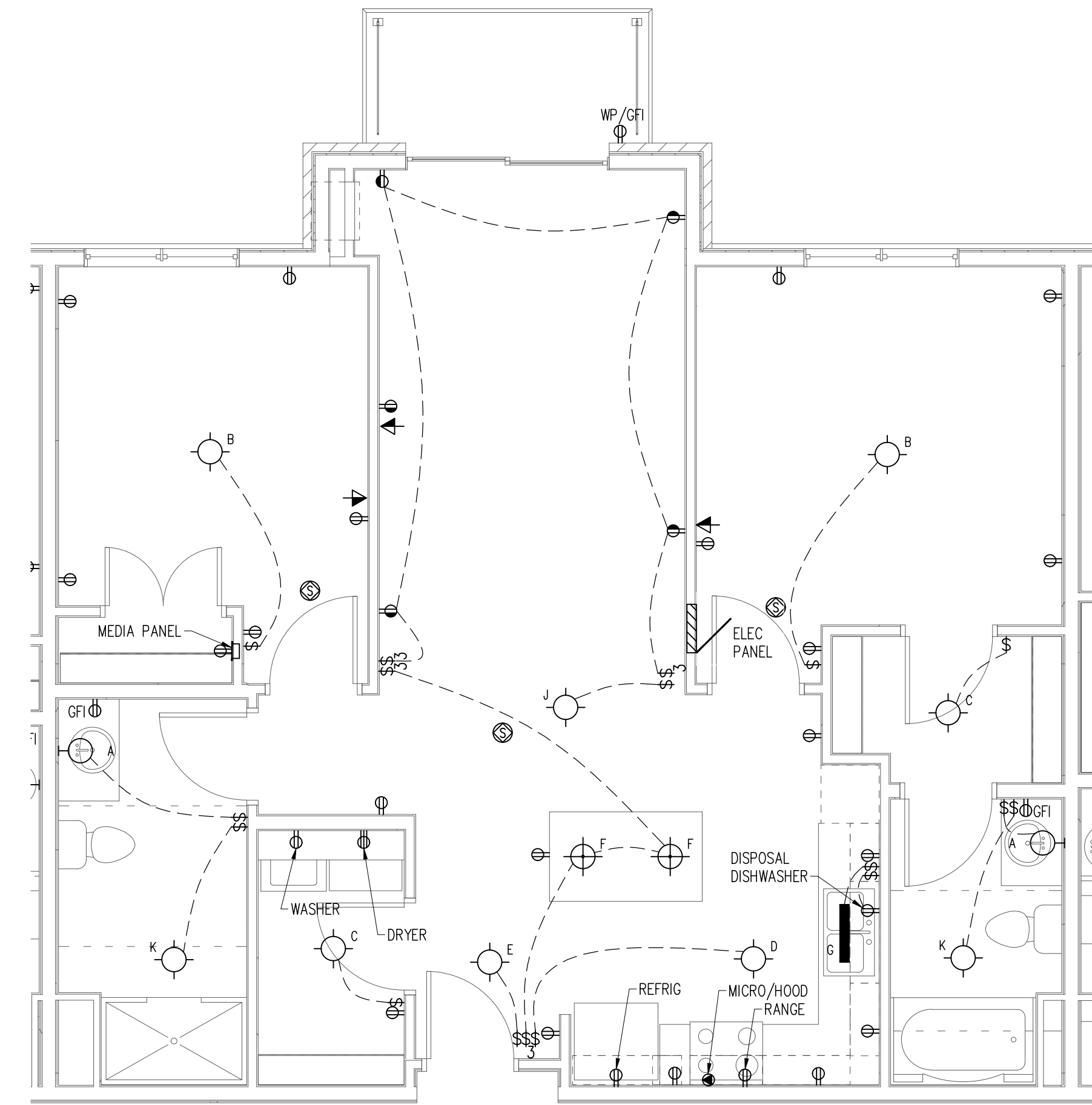
CORPORATE OFFICE
 406 Technology Drive E.
 Suite A
 Menomonie, WI 54751
 Tel 715-232-6800
 Fax 715-232-9802

A.C./a
 Auth Consulting/associates

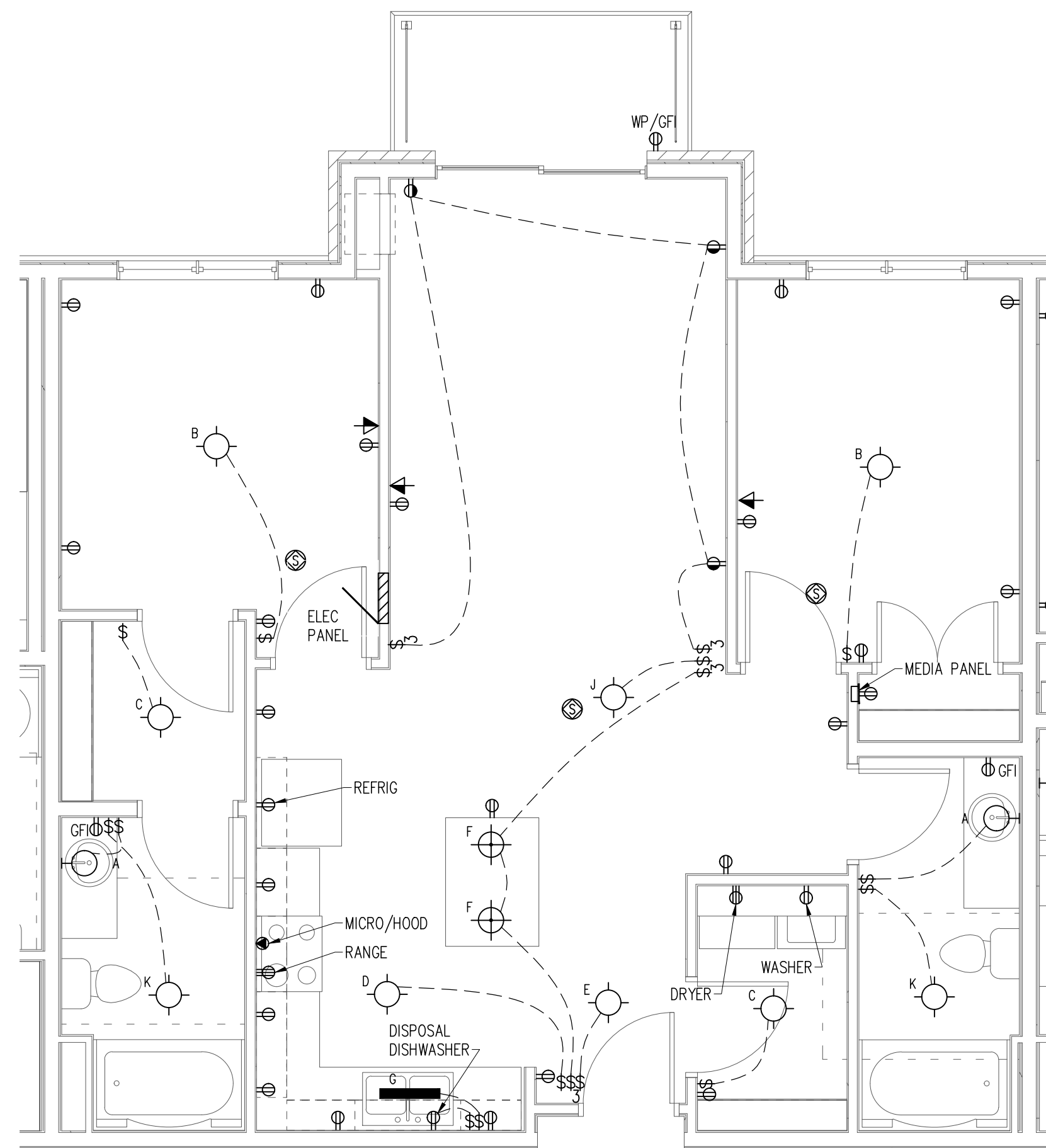
PROJECT: PROPOSED PROJECT FOR:
 RIVERS RIDGE LUXURY APARTMENTS
 RED WING, MN
 TYPICAL UNITS



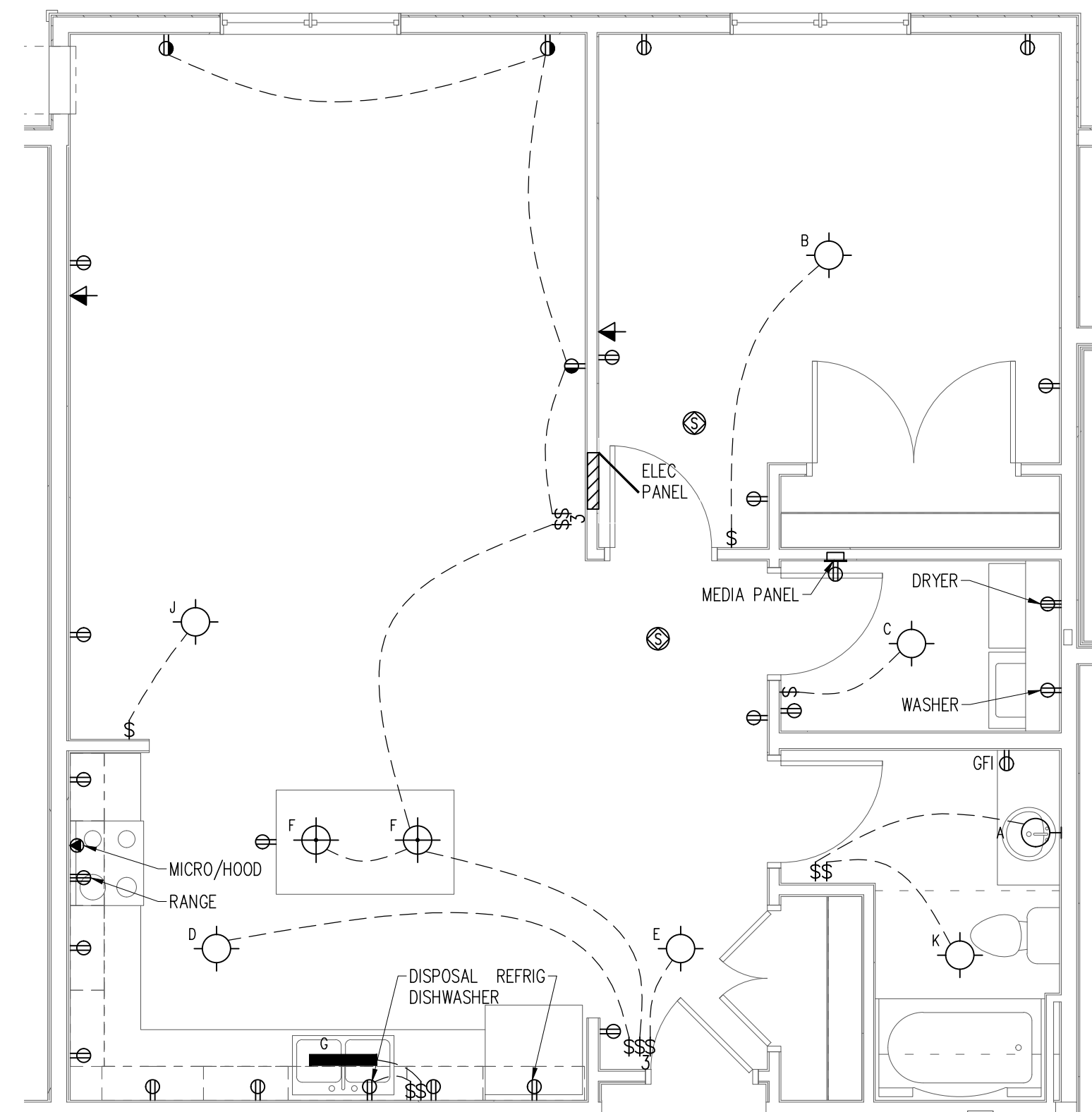
1 TYPICAL UNIT 2C
E3.2 SCALE: 1/4" = 1'-0" 0 2' 4' 8'



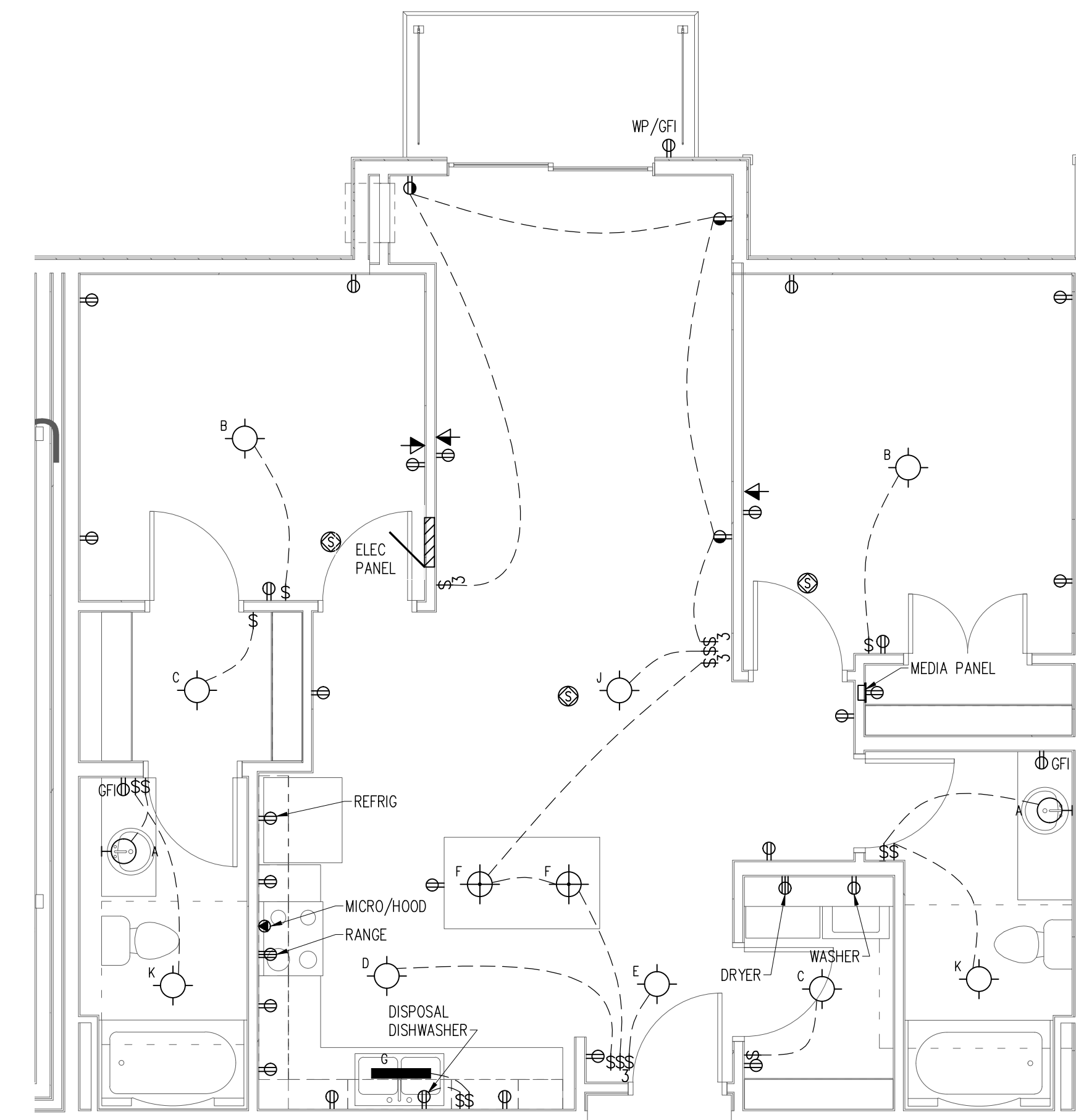
2 TYPICAL UNIT 2D
E3.2 SCALE: 1/4" = 1'-0" 0 2' 4' 8'



3 TYPICAL UNIT 2E
E3.2 SCALE: 1/4" = 1'-0" 0 2' 4' 8'



4 TYPICAL UNIT 2F
E3.2 SCALE: 1/4" = 1'-0" 0 2' 4' 8'



5 TYPICAL UNIT 2G
E3.2 SCALE: 1/4" = 1'-0" 0 2' 4' 8'

PROJECT:	PROPOSED PROJECT FOR: RIVERS RIDGE LUXURY APARTMENTS RED WING, MN
SHEET NO.:	E3.2
DATE:	1/17/17
CHECKED BY:	TJA
DRAWN BY:	DUK
DATE:	1/17/17
DWG FILE:	
REF FILE:	
JOB NUMBER:	508-135-16
REVISION DESCRIPTION:	
NAME:	
DATE:	

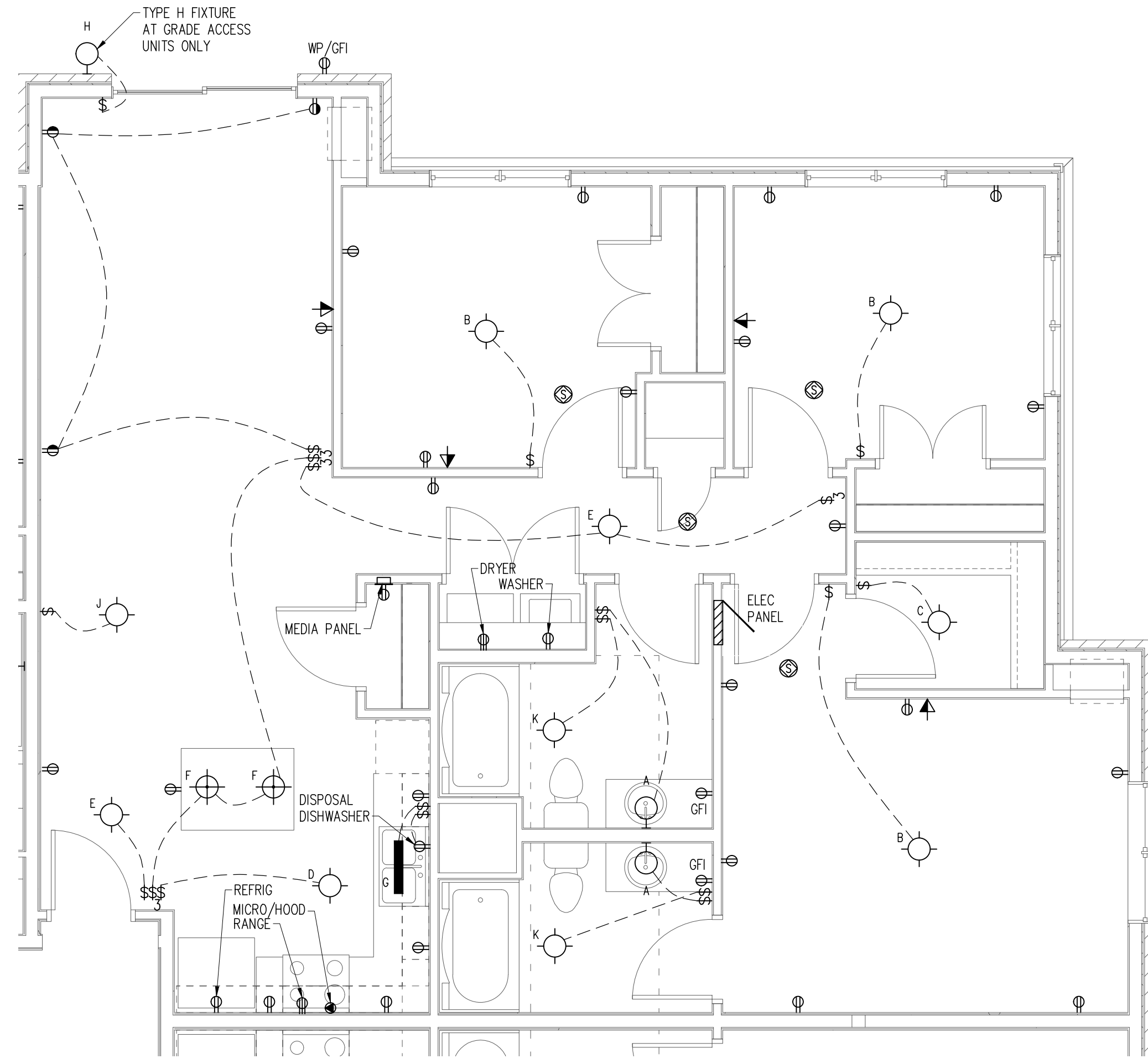
BERP! ELECTRIC LLC
 5308 Southway Drive • St. Cloud, MN 56301
 Phone: 320-666-8647
 Fax: 320-666-0312

BRANCH OFFICE
 2920 Balke Street
 Suite 101
 Hudson, WI 54016
 Tel: 715-381-5277

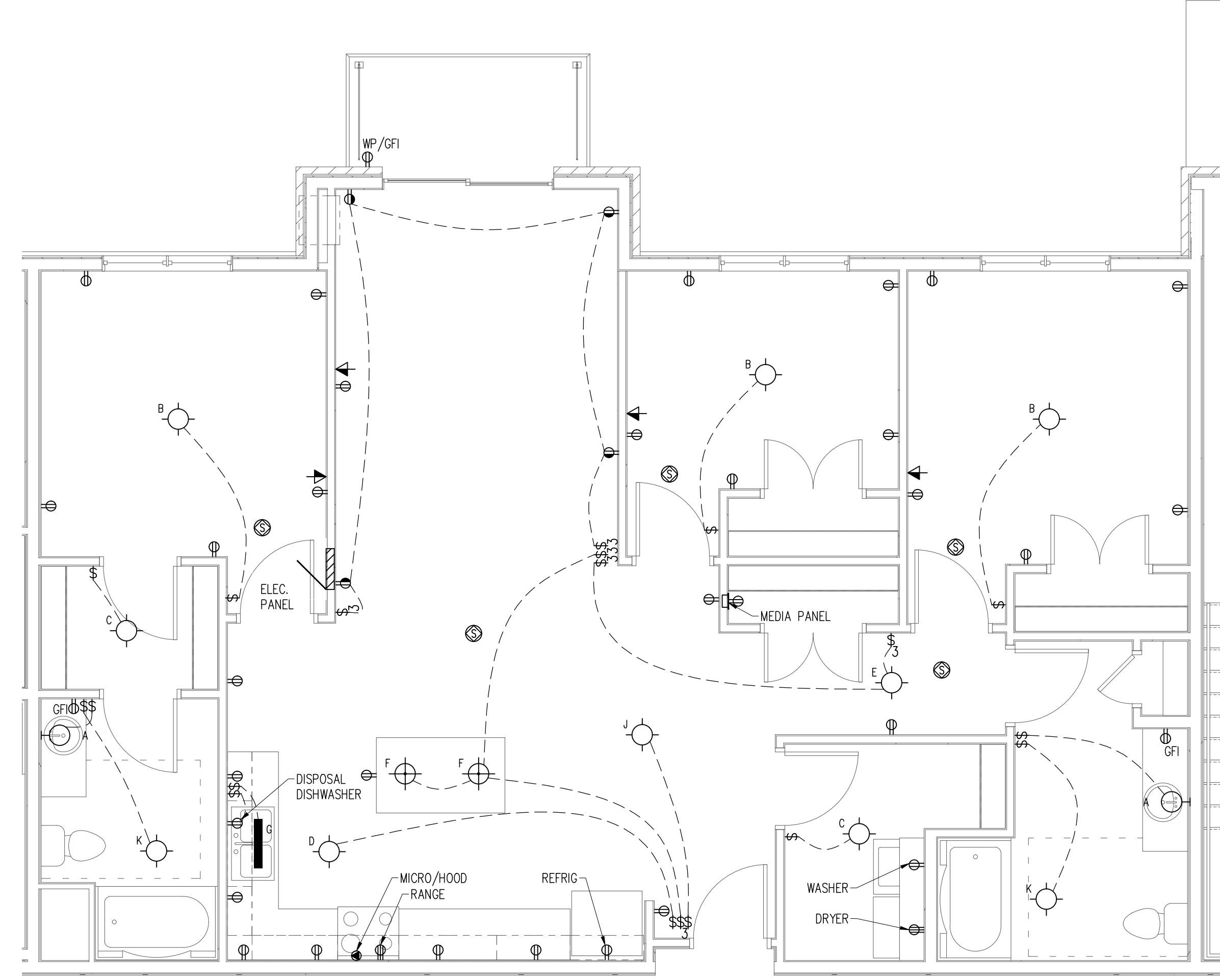
CORPORATE OFFICE
 406 Technology Drive E.
 Suite A
 Menomonie, WI 54751
 Tel: 715-232-8400
 Fax: 715-232-9402

A.C/a
 Auth Consulting/associates

PROPOSED PROJECT FOR:
RIVERS RIDGE LUXURY APARTMENTS
RED WING, MN
TYPICAL UNITS



1 TYPICAL UNIT 3A
E3.3 SCALE: 1/4" = 1'-0" 0 2' 4' 8'



2 TYPICAL UNIT 3B
E3.3 SCALE: 1/4" = 1'-0" 0 2' 4' 8'