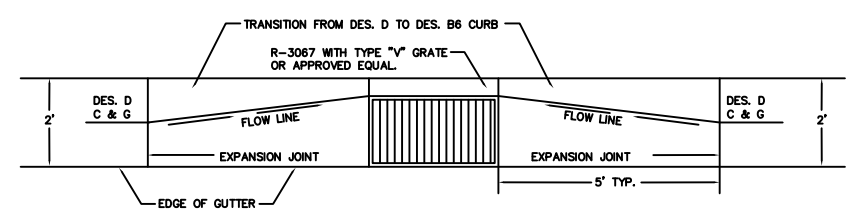
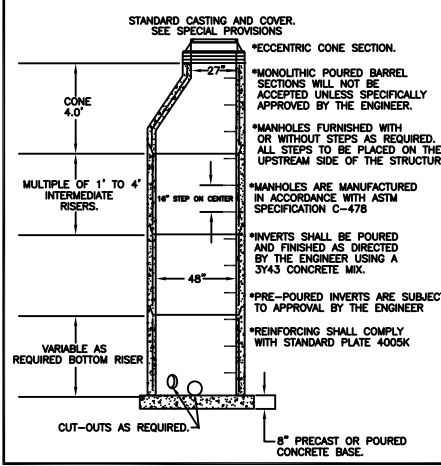


CITY OF RED WING TYPICAL CATCH BASIN ADJUSTMENT

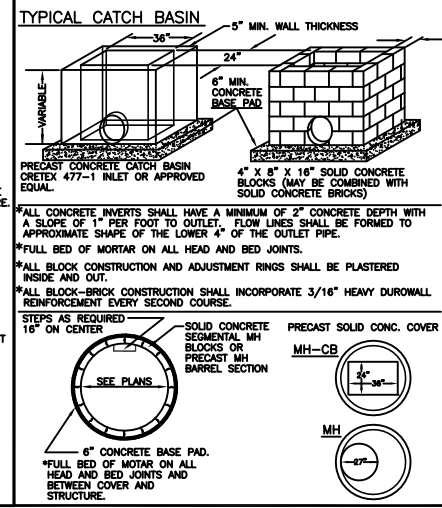


* PAYMENT FOR TRANSITION TO B6 CURB SHALL BE AS DESIGN 'D' C & G

STANDARD SANITARY MANHOLE



TYPICAL CB, MH-CB, & MH

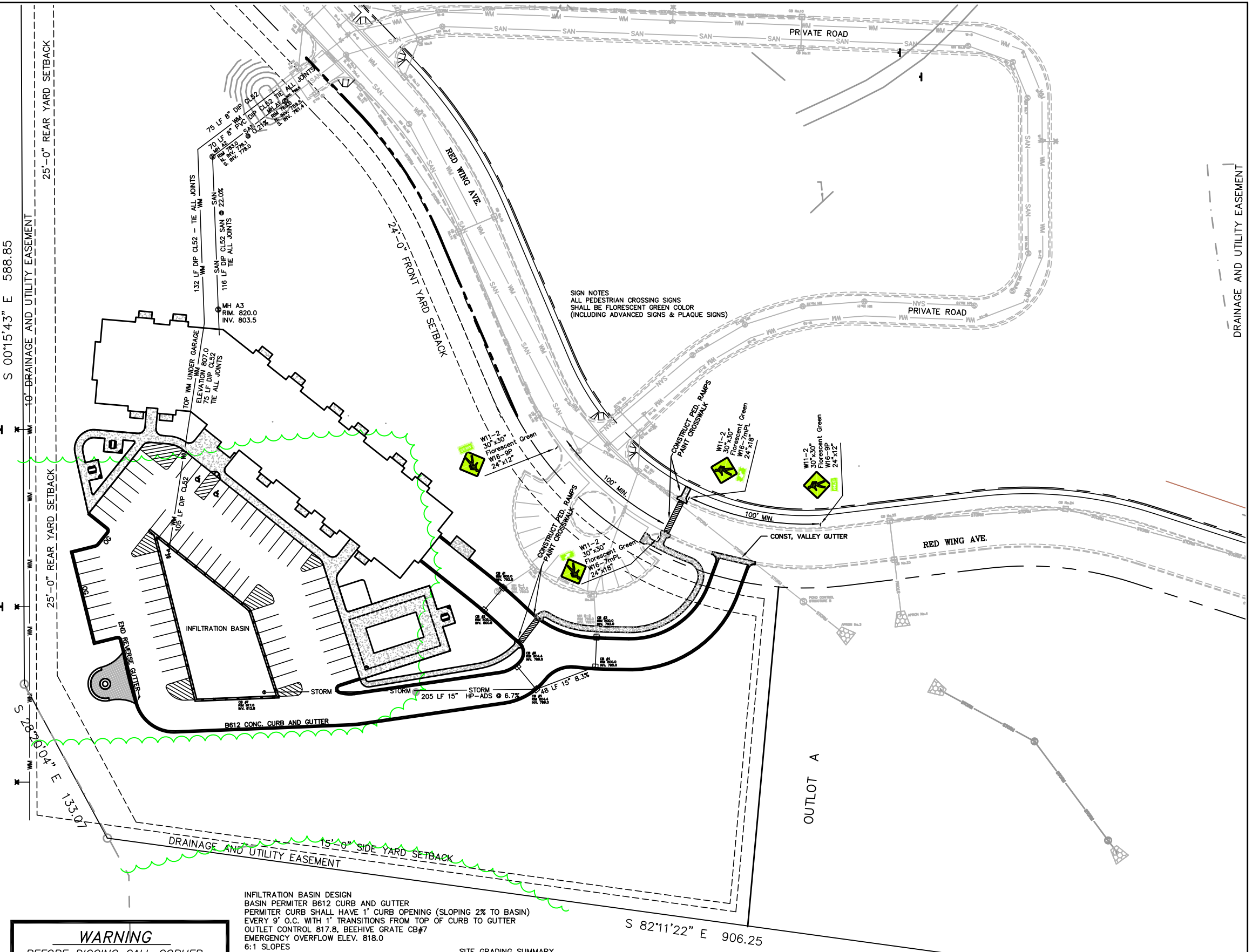


WARNING
BEFORE DIGGING CALL GOPHER
STATE ONE CALL FOR LOCATIONS.
651-454-0002
REQUIRED BY LAW

INFILTRATION BASIN DESIGN
BASIN PERIMETER B612 CURB AND GUTTER
PERIMETER CURB SHALL HAVE 1" CURB OPENING (SLOPING 2% TO BASIN)
EVERY 9' O.C. WITH 1' TRANSITIONS FROM TOP OF CURB TO GUTTER
OUTLET CONTROL B17.8, BEEHIVE GRATE CB#7
EMERGENCY OVERFLOW ELEV. 818.0
6:1 SLOPES
BOTTOM ELEV. 814.0
BASIN STORAGE AREAS
ELEV. 818 4,630 SQ. FT.
ELEV. 817 2,960 SQ. FT.
ELEV. 816 1,660 SQ. FT.
ELEV. 815 730 SQ. FT.
ELEV. 814 140 SQ. FT.

SITE GRADING SUMMARY
TOTAL DISTURBED AREA = 3.7 ACRES
WOODED AREA DISTURBED APPROX. 2.0 ACRES
ESTIMATED COMMON EXCAVATION 20,000 CU. YDS.
ESTIMATED SUBGRADE CORRECTION AND TOPSOIL
REMOVAL IN FILL AREAS 5,000 CU. YDS.
EARTHWORK ESTIMATED TO BALANCE ONSITE

UTILITY NOTES:
1.) ALL STORM SEWER SHALL BE 15" HP-ADS PVC PIPE.



S 00°15'43" E 588.85

25'-0" REAR YARD SETBACK

S 78°04'04" E 133.07

S 82°11'22" E 906.25

G-Cubed Inc.
Engineering
Surveying
Planning
285 Westview Drive
West Saint Paul, MN 55118
ph. 651.288.9474 fax 651.455.4948

I HEREBY CERTIFY THAT THIS PLAN,
SPECIFICATION, OR REPORT WAS
PREPARED BY ME OR UNDER MY
DIRECT SUPERVISION AND I AM A
DULY LICENSED PROFESSIONAL
ENGINEER UNDER THE LAWS OF THE
STATE OF MINNESOTA
Mark R. Welch
DATE 9/12/2016 REG. NO. 42736

DESIGNED	DJT
DRAWN	
CHECKED	

REVISED	BY	DATE

LATEST REVISION: 9-12-2016
Prepared For:
Andy Baartman
321 Potter Street
Red Wing, MN 55066
FILE NO.: 03212-CP baartman

CITY OF REDWING
GOODHUE COUNTY, MINNESOTA
2016 CONSTRUCTION

UTILITY
PLAN

Rivers Ridge Apartments
BENCHMARK: T.N.H. EAST SIDE OF
THE INTERSECTION OF BURNSIDE AVE.
AND STATE STREET, ELEV: 749.12
SHEET 1 OF 1 SHEETS