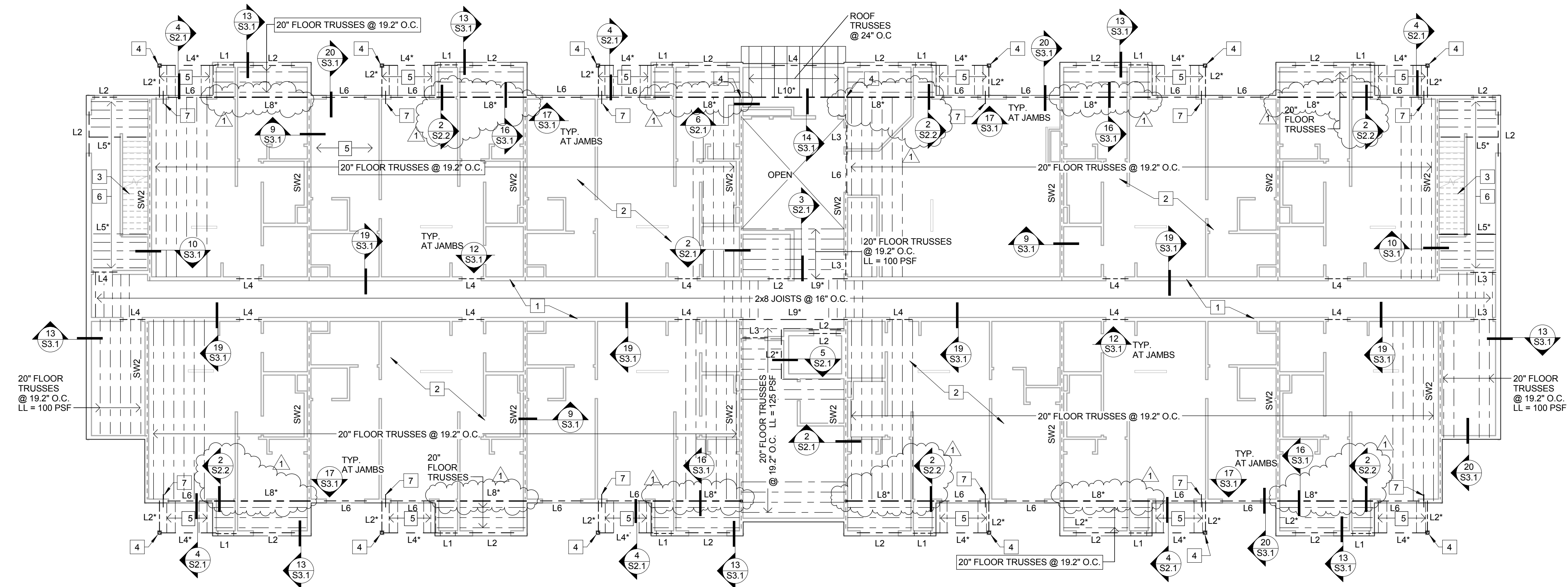


Structural Design Associates, Inc.

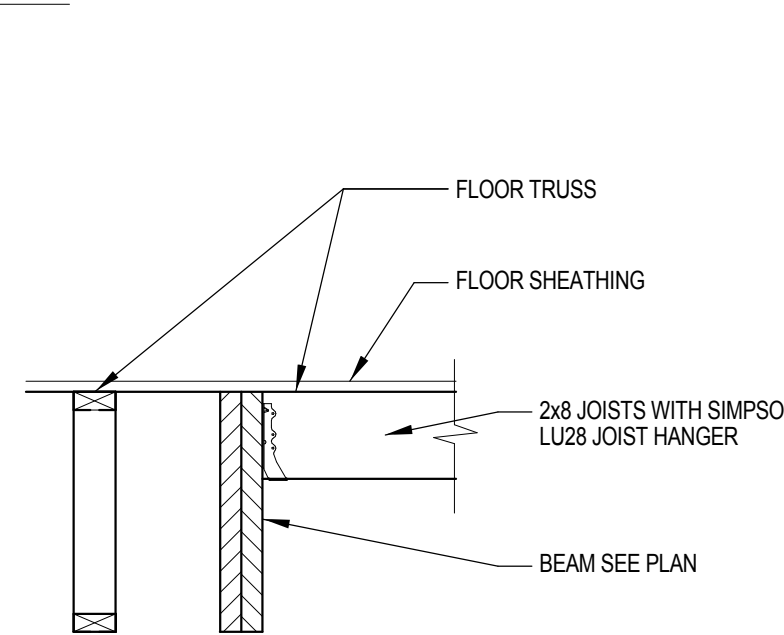
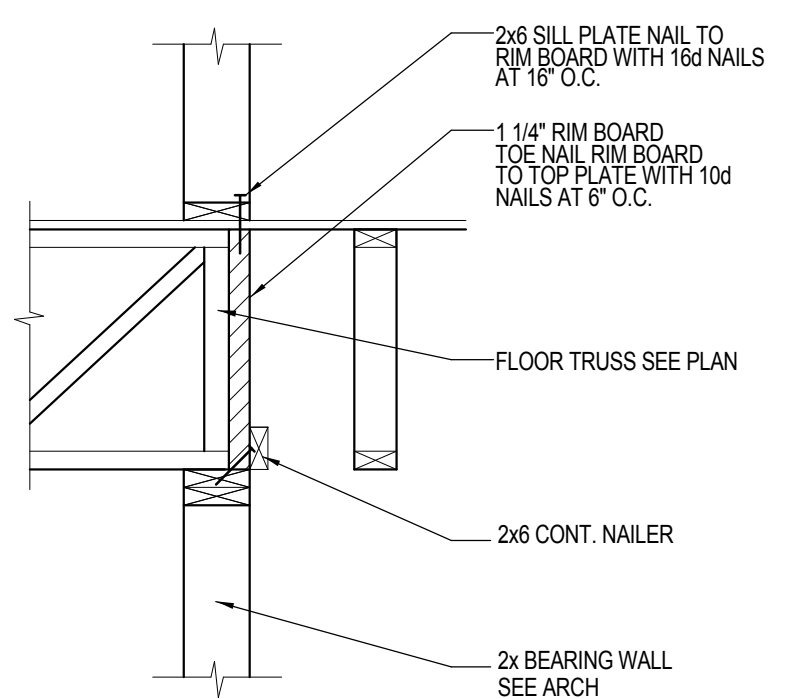
517 NW 4th Street, Suite 113
 Brainerd, Minnesota 56401
 (218)824-1585 Fax: (218)824-1586
 garyw@sdanorth.com
 markl@sdanorth.com

PROJECT TITLE:

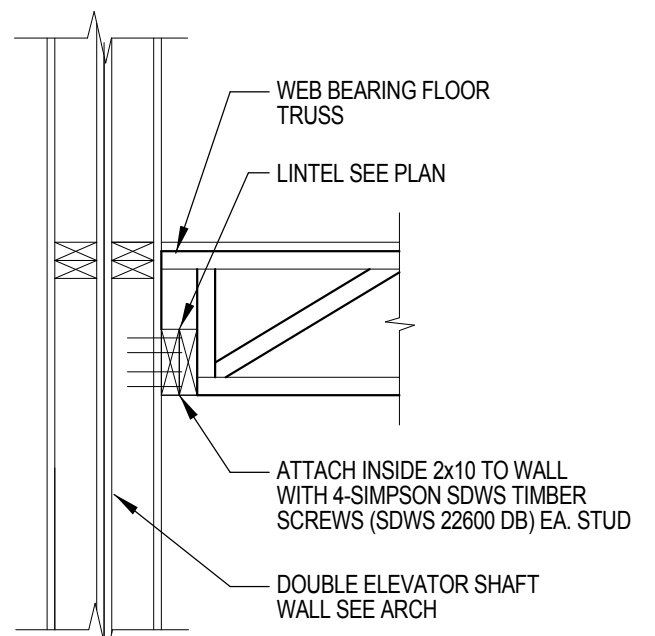
Northview Apartments
 Building One
 Sartell, Minnesota



1 SECOND FLOOR FRAMING PLAN
 S2.1 3/32" = 1'-0"

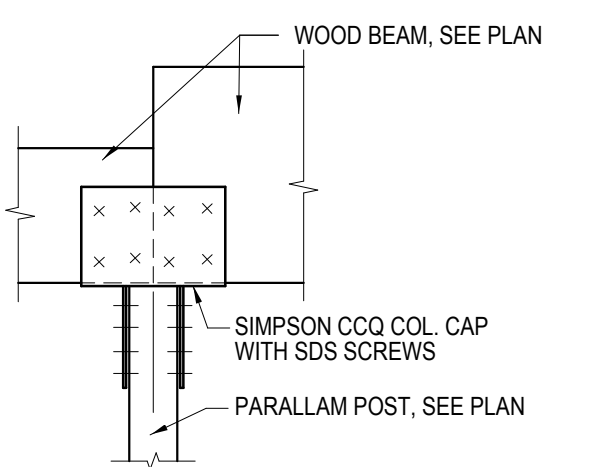


2 S2.1 SECTION AT BRG. WALL
 S2.1 3/4" = 1'-0"

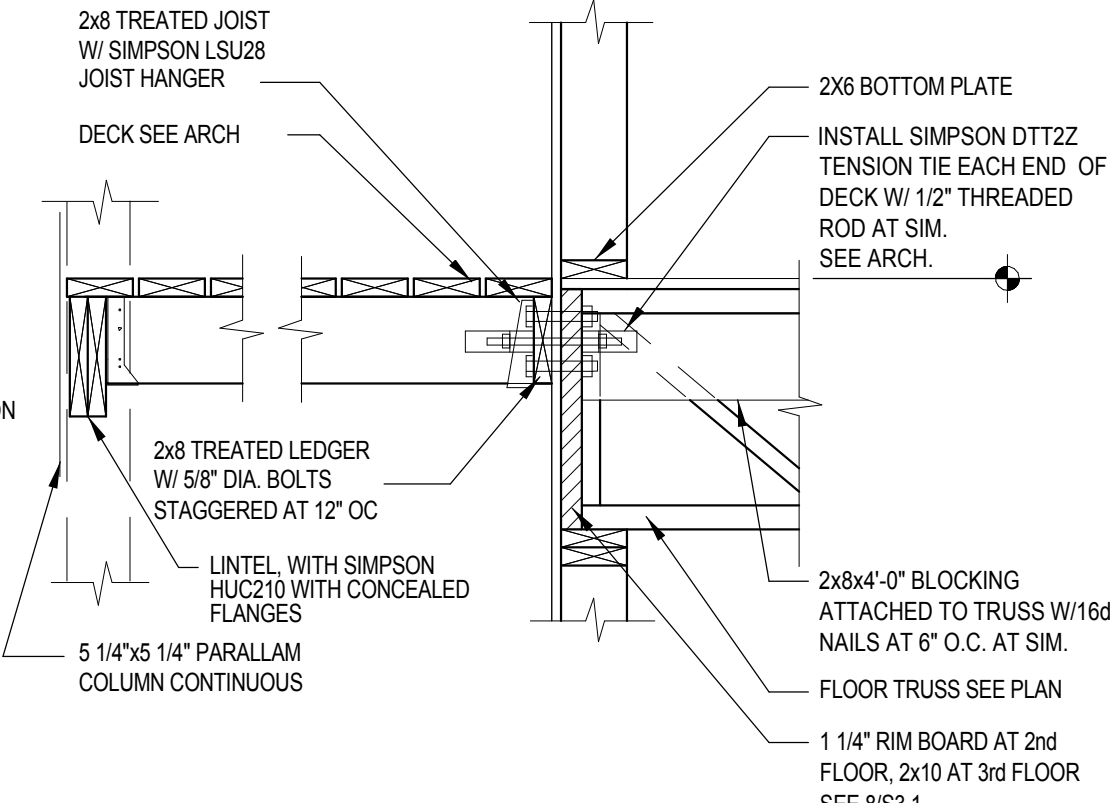


5 TRUSS AT ELEVATOR
 S2.1 3/4" = 1'-0"

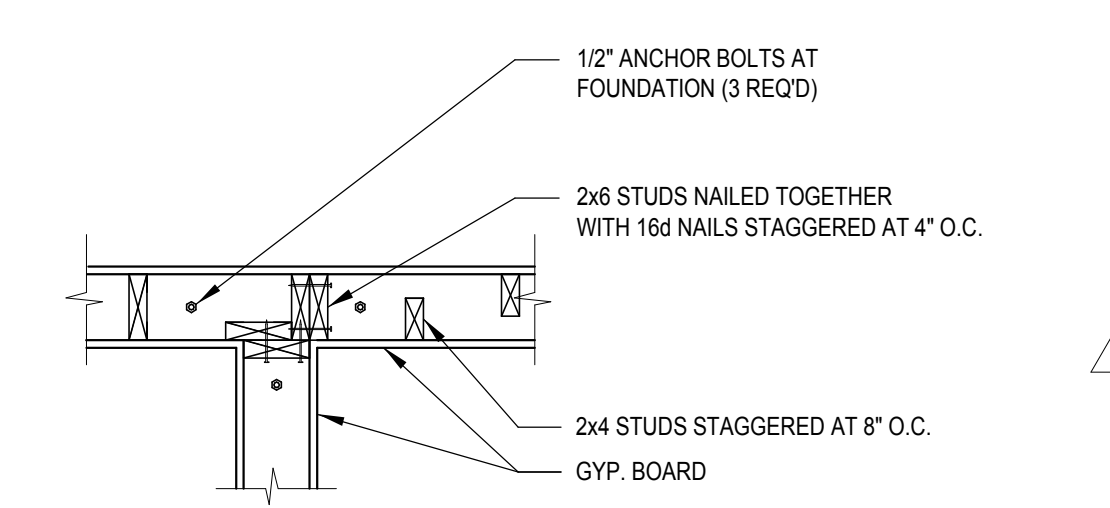
3 TRUSS AT BEAM
 S2.1 3/4" = 1'-0"



6 LINTEL AT COLUMN
 S2.1 3/4" = 1'-0"



4 SECTION AT DECK
 S2.1 3/4" = 1'-0"



7 WALL FRAMING DETAIL
 S2.1 3/4" = 1'-0"

NOTES: FLOOR FRAMING PLAN

- ===== INDICATES SHEAR WALL.
- A. SEE ARCHITECTURAL PLANS FOR UNIT DIMENSIONING.
- B. WOOD TRUSS LAYOUT SHOWN IS FOR GENERAL INTENT ONLY TRUSS FABRICATOR MAY ADJUST SPACING AND/OR CONFIGURATION AS REQ'D. TO GET THE MOST ECONOMICAL DESIGN (MAX. SPACING = 19.2' O.C. U.N.O.) DESIGN FLOOR TRUSSES FOR LIVE LOAD DEFLECTION OF L/480 AND TOTAL LOAD DEFLECTION OF L/360 MIN.
- C. SEE SHEATHING ATTACHMENT SCHEDULE FOR INTERIOR PARTY / SHEAR WALL REQUIREMENTS SHEET 8/S2.1

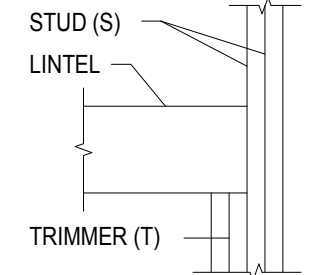
FLOOR PLAN NOTES:

- 1 2x6 BEARING WALL
- 2 3/4" T & G SHEATHING.
- 3 FOR STAIR STRINGERS DETAIL SEE 11/S3.1
- 4 5 1/4" x 1 1/4" PARALLAM POST TREATED AT EXTERIOR
- 5 2x8 TREATED JOISTS AT 16" O.C.
- 6 2x10 JOISTS AT 16" O.C.
- 7 SIMPSON DTT22 TENSION TIE

LINTEL SCHEDULE

MK	SIZE	JAMB: S=STUD T=TRIMMER (U.N.O. ON PLAN)
L1	2-2x8	1S, 1T
L2	2-2x10	1S, 1T
L3	2-2x10	1S, 2T
L4	3-2x10	1S, 2T
L5	2-1 3/4"x9 1/4" LVL	1S, 2T
L6	3-1 3/4"x9 1/4" LVL	3S
L7	NOT USED	-
L8	3-1 3/4"x14" LVL	3S
L9	2-1 3/4"x20" LVL	3S
L10	3-1 3/4"x20" LVL	3S

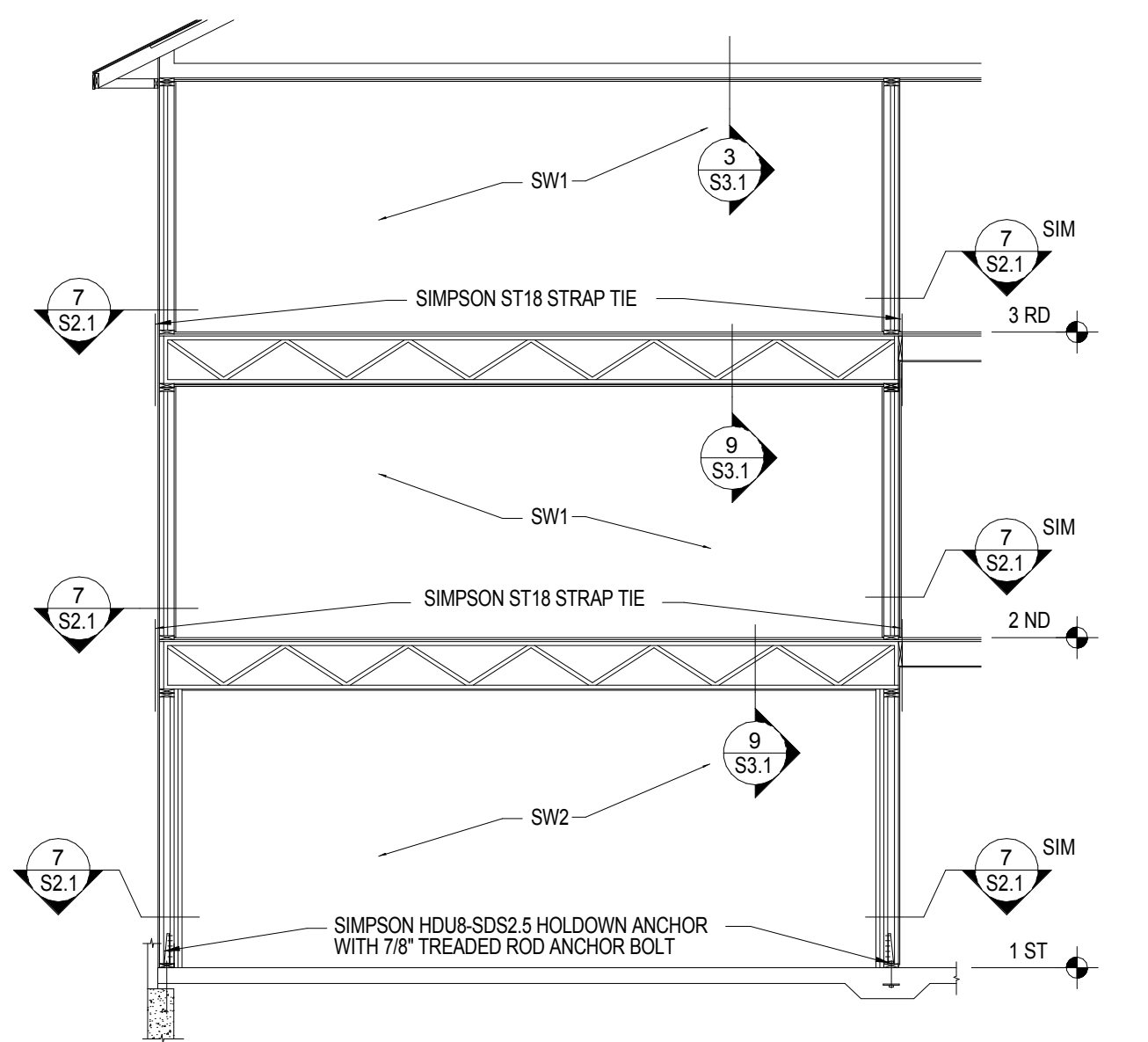
- NOTES:**
- 1. LINTEL DESIGNATION WITH * INDICATES LINTEL IS ELEVATED INTO TRUSS SPACE.
 - 2. LINTELS TO BE TREATED AT EXTERIOR CONDITIONS.



SHEAR WALL SCHEDULE

TYPE	SHEATHING REQUIREMENTS	BLOCKING	NAILING REQUIREMENTS	NOTES
SW1	5/8" GYP. BOARD EACH FACE	NO	6d AT 7" o.c.	1 & 2
SW2	5/8" GYP. BOARD EACH FACE	YES	6d AT 7" o.c.	1 & 2

- NOTES:**
1. ALL PARTY WALLS ARE 2x4 STAGGERED STUDS ON 2x6 PLATES WITH (1) LAYERS OF 5/8" GYP. BOARD ON EACH WALL.
 2. NO. 6 x 1 1/4 TYPE S OR W SCREWS CAN BE SUBSTITUTED FOR 6d COOLER NAILS.
 3. ALL SHEAR WALLS MUST BE TEMPORARILY BRACED UNTIL PERMANENT WALL SHEATHING ARE INSTALLED.
 4. SHEAR WALLS SHOWN ON PLAN DESIGNATE SHEAR WALL TYPES AT THE LEVEL BELOW THE FRAMING.
 5. SEE 8/S2.1 FOR PARTIAL BUILDING ELEVATION AT SHEARWALLS. ALL SHEARWALLS MUST TERMINATED AT FOUNDATION WITH ANCHOR BOLTS OR SIMPSON SCREW ANCHORS.
 6. INTERIOR GYPSUM BOARD OF ALL EXTERIOR WALLS AND CORRIDOR WALLS, UNIT SIDE, SHALL BE ATTACHED WITH 6d COOLER NAILS SPACED AT 7" o.c.



8 SHEARWALL SECTION
 S2.1 3/16" = 1'-0"

CERTIFICATION:
 I hereby certify that this plan, specification, or report was prepared by me or under my direct supervision and that I am a duly Licensed Professional Engineer under the laws of the State of Minnesota.

Printed Name: GARY WEIHE MULLER
 Signature: *Gary Weihe Muller*
 Date: 11-16-2016 License No.: 22625

REVISIONS:

No.	Revision Description	Date
1	GENERAL REVISIONS	3-17-17

Project No. B16064
 Date: 11-16-16
 Drawn By: MDL
 Checked by: GLW

SHEET TITLE:
SECOND FLOOR FRAMING AND DETAILS

SHEET No.:

S2.1

Structural Design Associates, Inc.

517 NW 4th Street, Suite 113
 Brainerd, Minnesota 56401
 (218)824-1585 Fax: (218)824-1586
 garyw@sdanorth.com
 markl@sdanorth.com

PROJECT TITLE:

Northview Apartments Building One Sartell, Minnesota

CERTIFICATION:

I hereby certify that this plan, specification, or report was prepared by me or under my direct supervision and that I am a duly Licensed Professional Engineer under the laws of the State of Minnesota.

Printed Name: GARY WEIHE MULLER

Signature: *Gary Weihe Muller*

Date: 11-16-2016 License No.: 22625

REVISIONS:

No.	Revision Description	Date
1	GENERAL REVISIONS	3-17-17

Project No. B16064

Date: 11-16-16

Drawn By: MDL

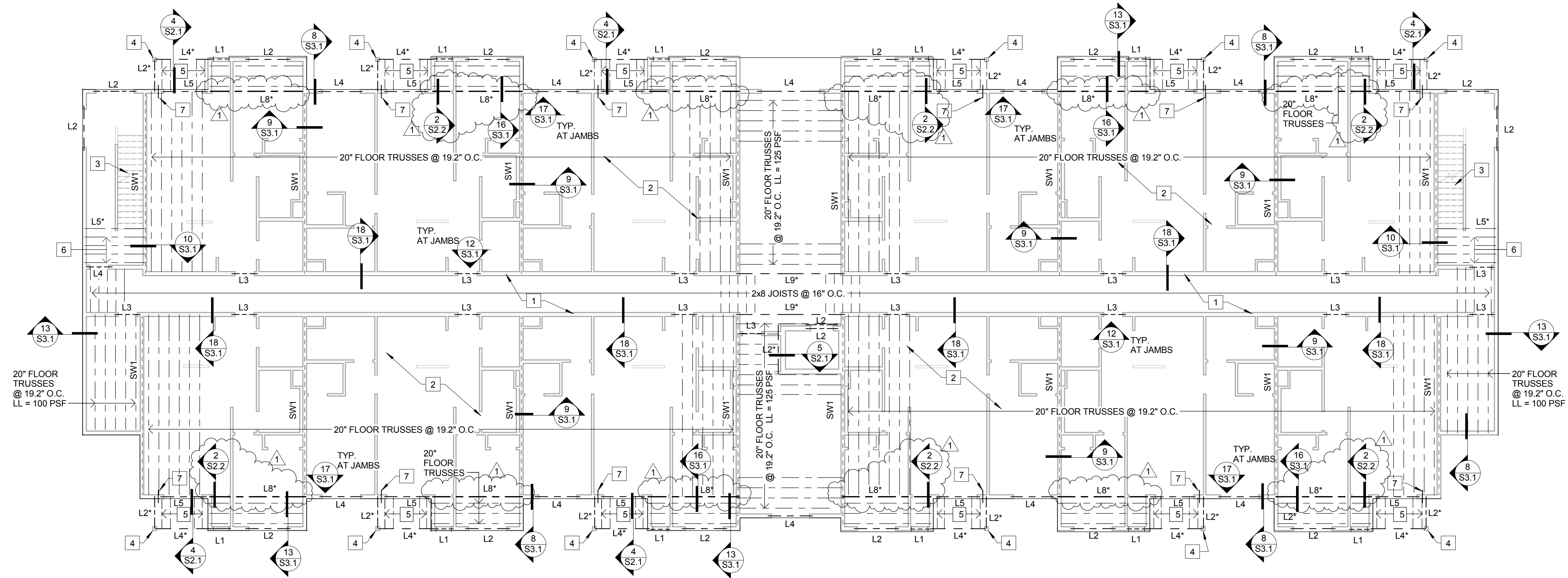
Checked by: GLW

SHEET TITLE:

THIRD FLOOR FRAMING PLAN

SHEET No.:

S2.2



1 THIRD FLOOR FRAMING PLAN
 S2.2 3/32" = 1'-0"

NOTES: FLOOR FRAMING PLAN

- ===== INDICATES SHEAR WALL.
- A. SEE ARCHITECTURAL PLANS FOR UNIT DIMENSIONING.
- B. WOOD TRUSS LAYOUT SHOWN IS FOR GENERAL INTENT ONLY TRUSS FABRICATOR MAY ADJUST SPACING AND/OR CONFIGURATION AS REQ'D. TO GET THE MOST ECONOMICAL DESIGN (MAX. SPACING = 19.2' O.C. U.N.O.) DESIGN FLOOR TRUSSES FOR LIVE LOAD DEFLECTION OF L/480 AND TOTAL LOAD DEFLECTION OF L/360 MIN.
- C. SEE SHEATHING ATTACHMENT SCHEDULE FOR INTERIOR PARTY / SHEAR WALL REQUIREMENTS SHEET 8/S2.1

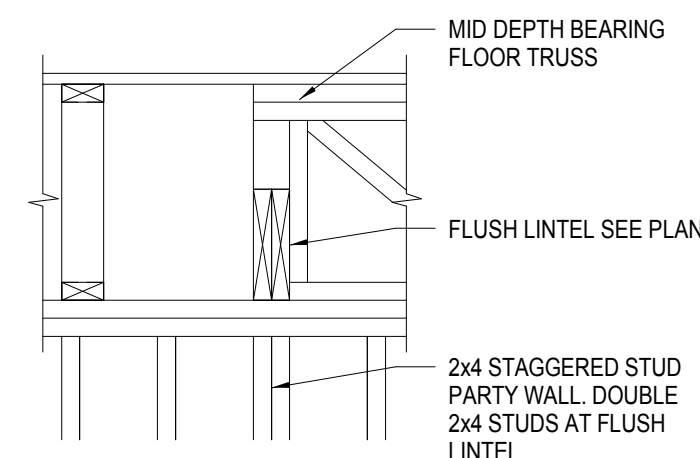
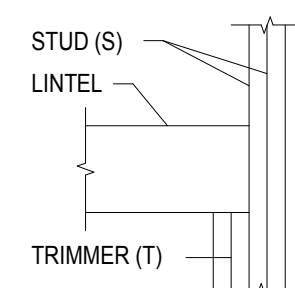
FLOOR PLAN NOTES:

- 1 2x6 BEARING WALL
- 2 3/4" T & G SHEATHING.
- 3 FOR STAIR STRINGERS DETAIL SEE 11/S3.1
- 4 5 1/4"x5 1/4" PARALLAM POST TREATED AT EXTERIOR
- 5 2x8 TREATED JOISTS AT 16" O.C.
- 6 2x10 JOISTS AT 16" O.C.
- 7 SIMPSON DTT22 TENSION TIE

LINTEL SCHEDULE

MK	SIZE	JAMB:	S=STUD T=TRIMMER (U.N.O. ON PLAN)
L1	2-2x8		1S, 1T
L2	2-2x10		1S, 1T
L3	2-2x10		1S, 2T
L4	3-2x10		1S, 2T
L5	2-1 3/4"x9 1/4" LVL		1S, 2T
L6	3-1 3/4"x9 1/4" LVL		3S
L7	NOT USED		-
L8	3-1 3/4"x14" LVL		3S
L9	2-1 3/4"x20" LVL		3S
L10	3-1 3/4"x20" LVL		3S

- NOTES:**
1. LINTEL DESIGNATION WITH * INDICATES LINTEL IS ELEVATED INTO TRUSS SPACE.
 2. LINTELS TO BE TREATED AT EXTERIOR CONDITIONS.



2 TRUSS SUPPORT LINTEL
 S2.2 3/4" = 1'-0"

Structural Design Associates, Inc.

517 NW 4th Street, Suite 113
 Brainerd, Minnesota 56401
 (218)824-1585 Fax: (218)824-1586
 garyw@sdanorth.com
 markl@sdanorth.com

PROJECT TITLE:

Northview Apartments Building One Sartell, Minnesota

CERTIFICATION:

I hereby certify that this plan, specification, or report was prepared by me, or under my direct supervision and that I am a duly Licensed Professional Engineer under the laws of the State of Minnesota.

Printed Name: GARY WEIHE MULLER

Signature: *Gary Weihe Muller*

Date: 11-16-2016 License No.: 22825

REVISIONS:

No.	Revision Description	Date
1	GENERAL REVISIONS	3-17-17

Project No. B16064

Date: 11-16-16

Drawn By: MDL

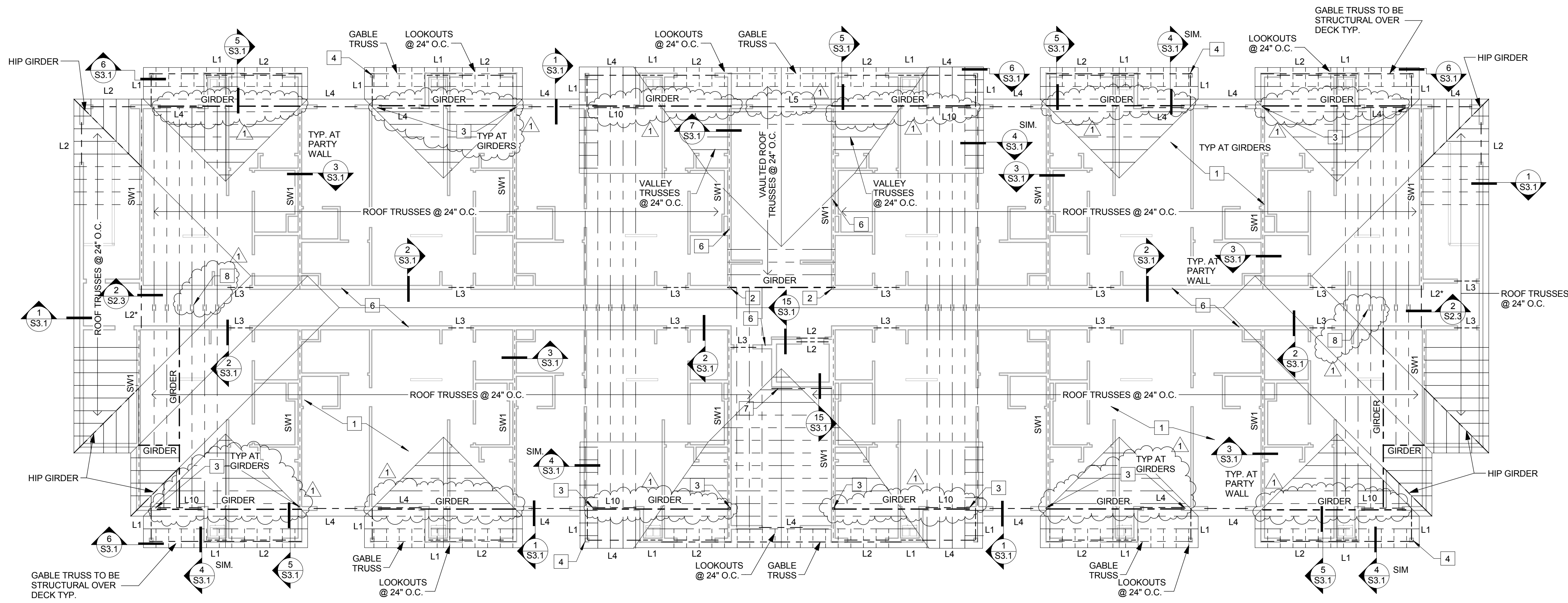
Checked by: GLW

SHEET TITLE:

ROOF FRAMING PLAN

SHEET No.:

S2.3

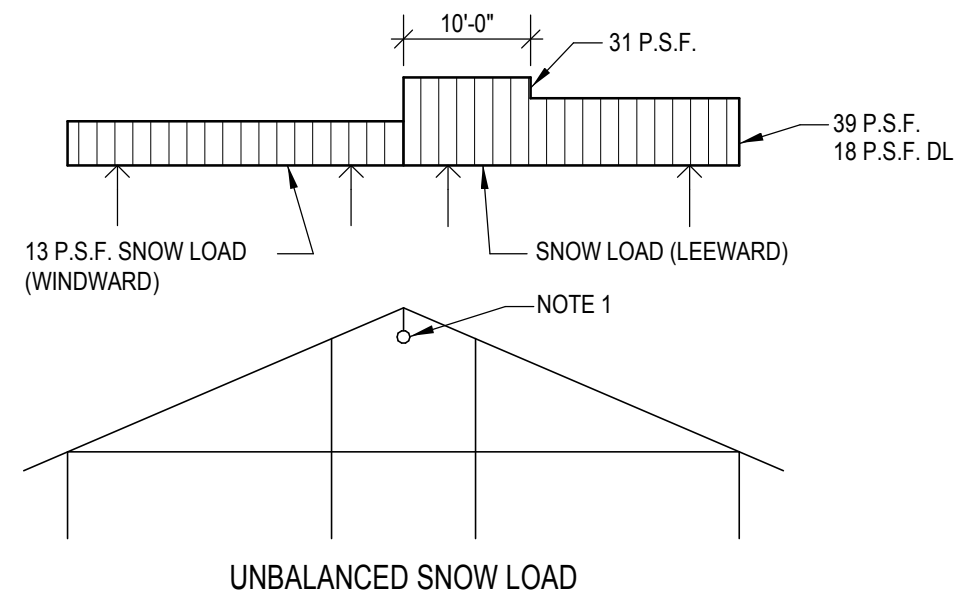
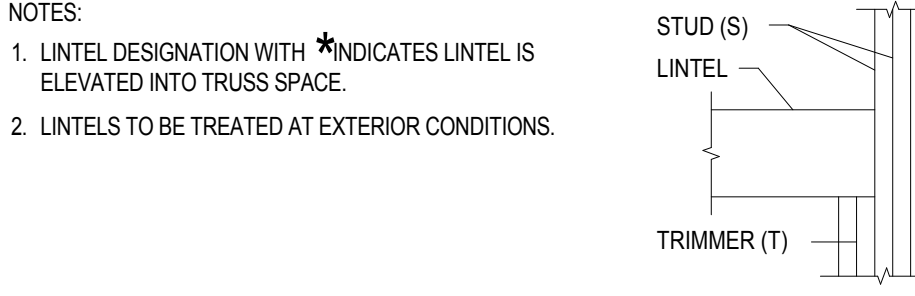


1 ROOF FRAMING PLAN
 S2.3 3/32" = 1'-0"

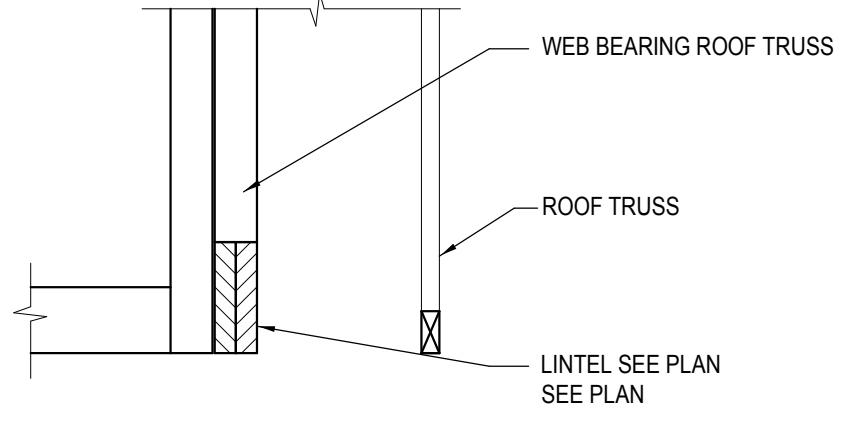
- NOTES: ROOF FRAMING PLAN
- INDICATES SHEAR WALL.
 - A. SEE ARCHITECTURAL PLANS FOR UNIT DIMENSIONING.
 - B. WOOD TRUSS LAYOUT SHOWN IS FOR GENERAL INTENT ONLY TRUSS FABRICATOR MAY ADJUST SPACING AND/OR CONFIGURATION AS REQD. TO GET THE MOST ECONOMICAL DESIGN (MAX. SPACING = 24" O.C.) SEE TYPICAL TRUSS LOAD DIAGRAM.
 - C. TRUSS SUPPLIER SHALL DESIGN GIRDER BEARING TO NOT EXCEED BEARING STRESSES OF SUPPORTING PLATES.
 - D. SEE SHEATHING ATTACHMENT SCHEDULE FOR INTERIOR PARTY / SHEAR WALL REQUIREMENTS SHEET 8/S2.1

- ROOF PLAN NOTES:
- 1 1/2" ROOF SHEATHING
 - 2 2-2x6 COLUMN
 - 3 3-2x6 COLUMN
 - 4 5 1/4"x5 1/4" PARALLAM POST
 - 5 2x4 BEARING WALL
 - 6 2x6 BEARING WALL
 - 7 2-2x10 LEDGER FOR WEB BEARING ROOF TRUSSES SEE 15/S3.1
 - 8 GUSSET TOP CHORD OF TRUSSES TOGETHER WITH 1/2" PLYWOOD GUSSETS EACH SIDE SEE 4/S2.3

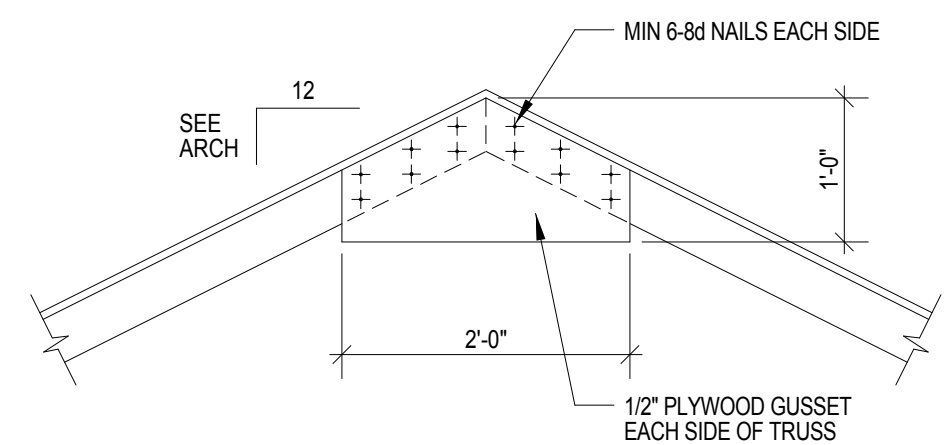
MK	SIZE	JAMB:	S=STUD T=TRIMMER (U.N.O. ON PLAN)
L1	2-2x6	1S, 1T	
L2	2-2x10	1S, 1T	
L3	2-2x10	1S, 2T	
L4	3-2x10	1S, 2T	
L5	2-1 3/4"x9 1/4" LVL	1S, 2T	
L6	3-1 3/4"x9 1/4" LVL	3S	
L7	NOT USED	-	
L8	3-1 3/4"x14" LVL	3S	
L9	2-1 3/4"x20" LVL	3S	
L10	3-1 3/4"x20" LVL	3S	



NOTE:
 TRUSSES TO BE DESIGNED FOR ATTACHMENT OF 6" DIAMETER SPRINKLER MAIN LOCATED AT RIDGE OF BUILDING. APPROXIMATE WEIGHT OF PIPE WITH WATER IS 35 P.L.F. PIPE IS TO BE SUPPORTED AT 10'-0" MAX. INTERVALS FOR A LOAD OF 350 LBS/MIN. CONTRACTOR SHALL VERIFY LAYOUT OF ATTIC SPRINKLER SYSTEM PRIOR TO FABRICATION OF TRUSSES.



2 SECTION AT ROOF
 S2.3 3/4" = 1'-0"



3 GUSSET DETAIL
 S2.3 3/4" = 1'-0"