

6

5

4

3

2

1

D

C

B

A

NOTES:

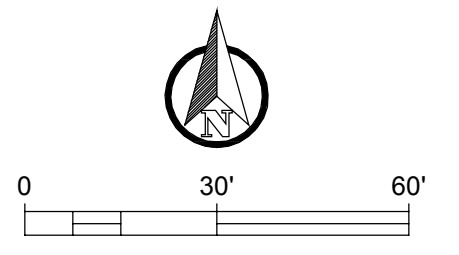
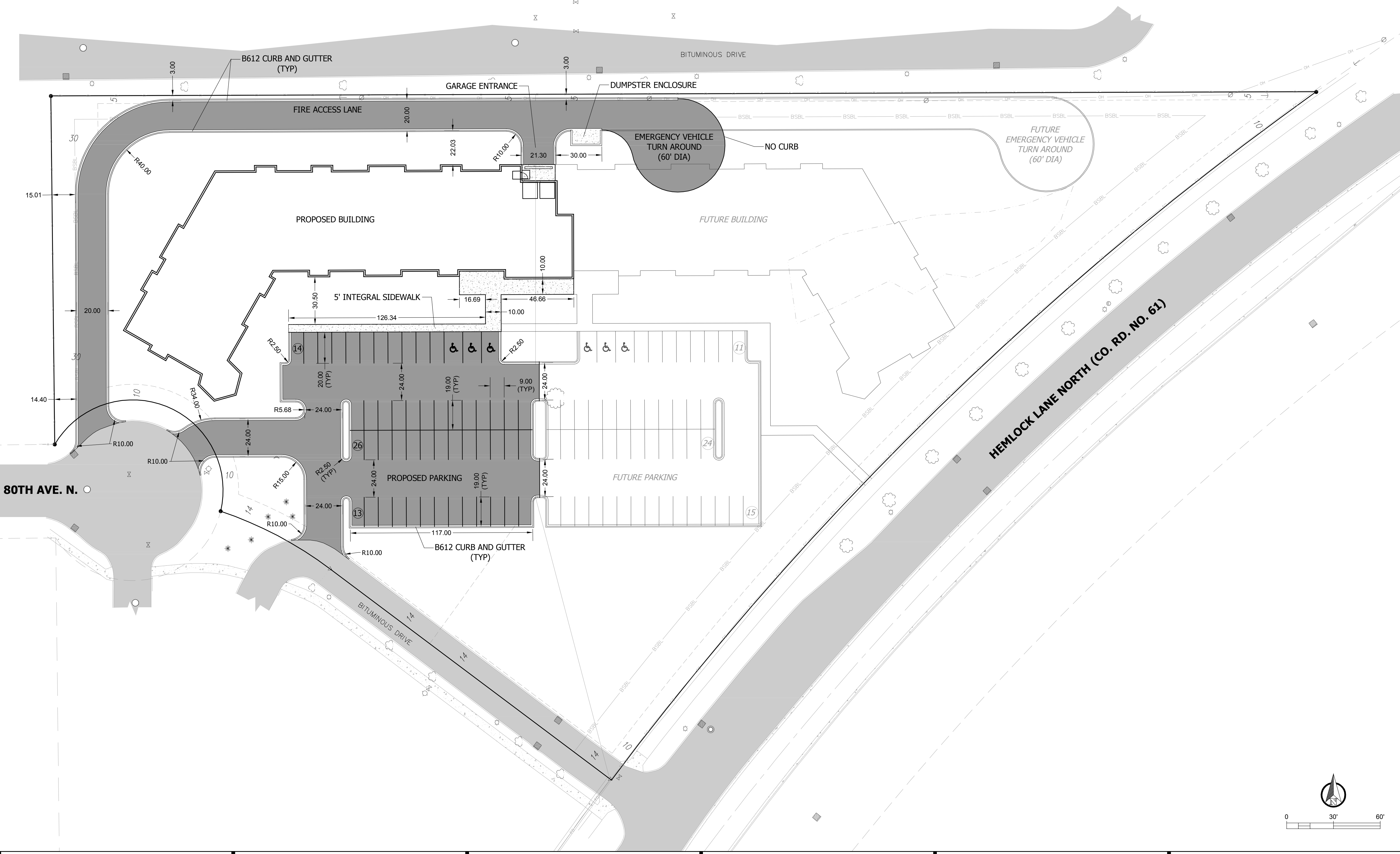
1. TOPOGRAPHIC INFORMATION PROVIDED BY OTHERS.
2. CONTRACTOR SHALL FIELD VERIFY LOCATION AND ELEVATIONS OF ALL EXISTING UNDERGROUND UTILITIES.
3. CONTRACTOR SHALL FIELD VERIFY ALL BUILDING DIMENSIONS PRIOR TO ANY CONSTRUCTION.



322 1st Ave N, Suite #600
 Minneapolis, MN 55401
 phone 612.746.4260
 facsimile 612.746.4754
 www.jlgarchitects.com
 copyright © 2016

PRELIMINARY
 NOT FOR CONSTRUCTION

REVISION SCHEDULE		
NO.	DESCRIPTION	DATE



JLG ARCHITECTS
BOTTINEAU RIDGE II APARTMENTS
 MAPLE GROVE, MN

DATE
11/30/16

PHASE

PROJECT
16098

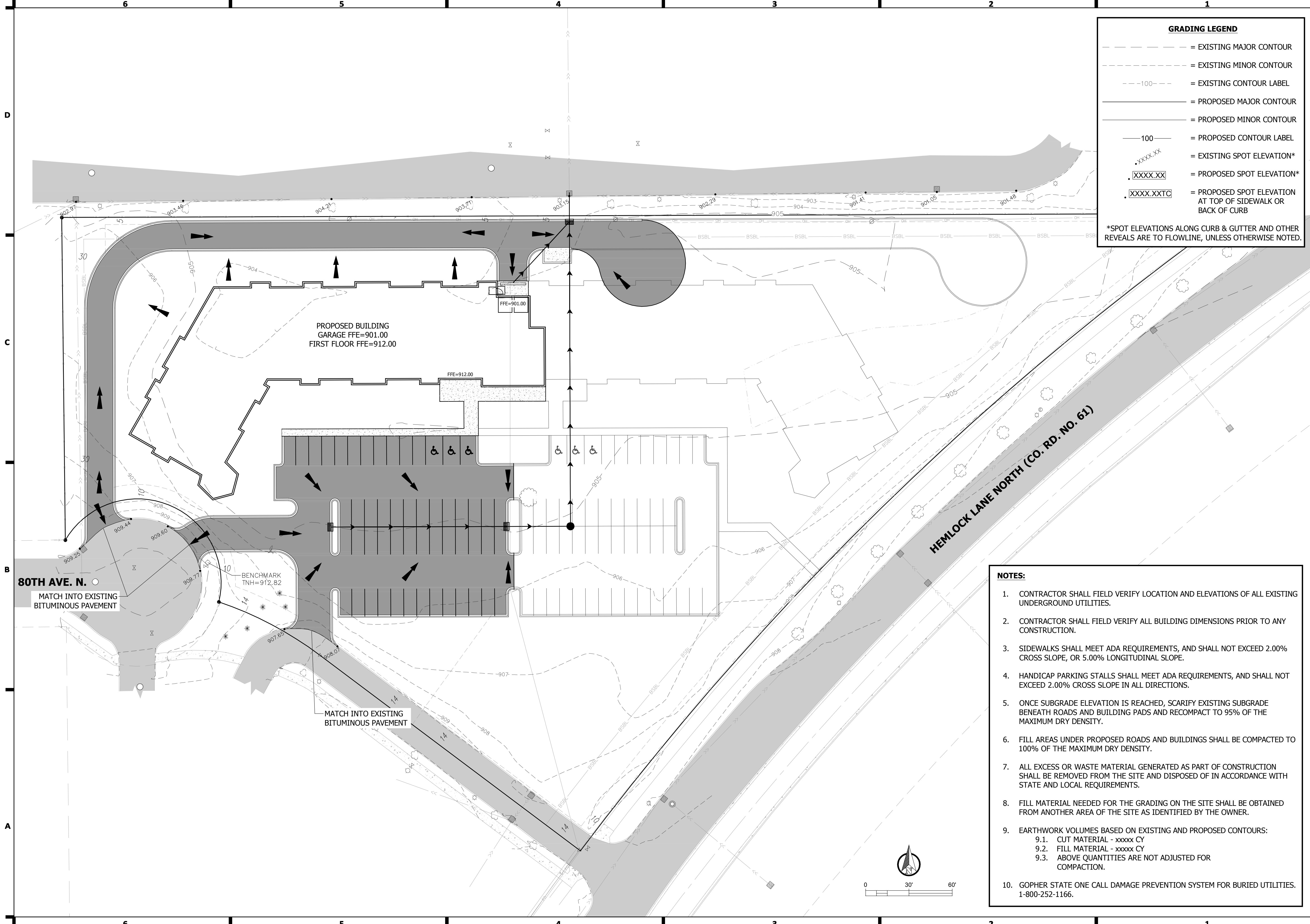
SHEET
C101
 SITE PLAN

REVISION SCHEDULE		
NO.	DESCRIPTION	DATE

GRADING LEGEND

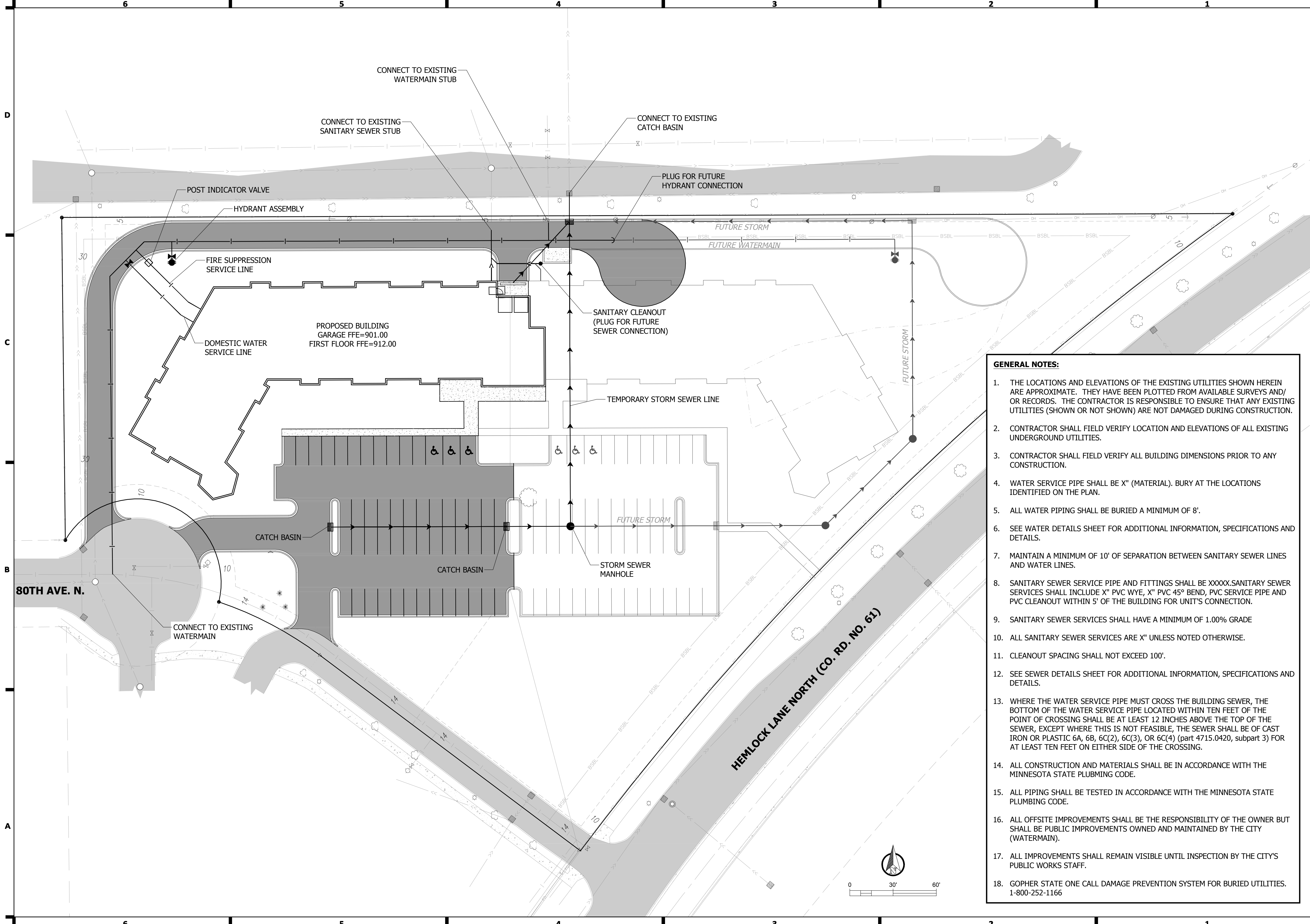
- - - - - = EXISTING MAJOR CONTOUR
- - - - - = EXISTING MINOR CONTOUR
- - - - -100- - - - - = EXISTING CONTOUR LABEL
- = PROPOSED MAJOR CONTOUR
- = PROPOSED MINOR CONTOUR
- 100————— = PROPOSED CONTOUR LABEL
- XXXX.XX = EXISTING SPOT ELEVATION*
- XXXX.XX = PROPOSED SPOT ELEVATION*
- XXXX.XXTC = PROPOSED SPOT ELEVATION AT TOP OF SIDEWALK OR BACK OF CURB

*SPOT ELEVATIONS ALONG CURB & GUTTER AND OTHER REVEALS ARE TO FLOWLINE, UNLESS OTHERWISE NOTED.



- NOTES:**
- CONTRACTOR SHALL FIELD VERIFY LOCATION AND ELEVATIONS OF ALL EXISTING UNDERGROUND UTILITIES.
 - CONTRACTOR SHALL FIELD VERIFY ALL BUILDING DIMENSIONS PRIOR TO ANY CONSTRUCTION.
 - SIDEWALKS SHALL MEET ADA REQUIREMENTS, AND SHALL NOT EXCEED 2.00% CROSS SLOPE, OR 5.00% LONGITUDINAL SLOPE.
 - HANDICAP PARKING STALLS SHALL MEET ADA REQUIREMENTS, AND SHALL NOT EXCEED 2.00% CROSS SLOPE IN ALL DIRECTIONS.
 - ONCE SUBGRADE ELEVATION IS REACHED, SCARIFY EXISTING SUBGRADE BENEATH ROADS AND BUILDING PADS AND RECOMPACT TO 95% OF THE MAXIMUM DRY DENSITY.
 - FILL AREAS UNDER PROPOSED ROADS AND BUILDINGS SHALL BE COMPACTED TO 100% OF THE MAXIMUM DRY DENSITY.
 - ALL EXCESS OR WASTE MATERIAL GENERATED AS PART OF CONSTRUCTION SHALL BE REMOVED FROM THE SITE AND DISPOSED OF IN ACCORDANCE WITH STATE AND LOCAL REQUIREMENTS.
 - FILL MATERIAL NEEDED FOR THE GRADING ON THE SITE SHALL BE OBTAINED FROM ANOTHER AREA OF THE SITE AS IDENTIFIED BY THE OWNER.
 - EARTHWORK VOLUMES BASED ON EXISTING AND PROPOSED CONTOURS:
 - 9.1. CUT MATERIAL - xxxxx CY
 - 9.2. FILL MATERIAL - xxxxx CY
 - 9.3. ABOVE QUANTITIES ARE NOT ADJUSTED FOR COMPACTION.
 - GOPHER STATE ONE CALL DAMAGE PREVENTION SYSTEM FOR BURIED UTILITIES. 1-800-252-1166.

JLG ARCHITECTS
BOTTINEAU RIDGE II APARTMENTS
MAPLE GROVE, MN



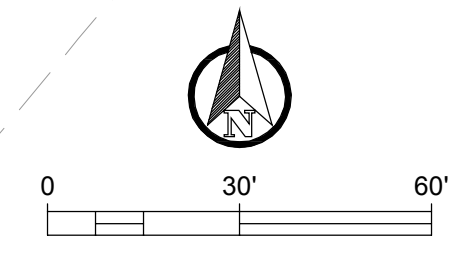
322 1st Ave N, Suite #600
 Minneapolis, MN 55401
 phone 612.746.4260
 facsimile 612.746.4754
 www.jlgarchitects.com
 copyright © 2016

PRELIMINARY
 NOT FOR CONSTRUCTION

REVISION SCHEDULE		
NO.	DESCRIPTION	DATE

GENERAL NOTES:

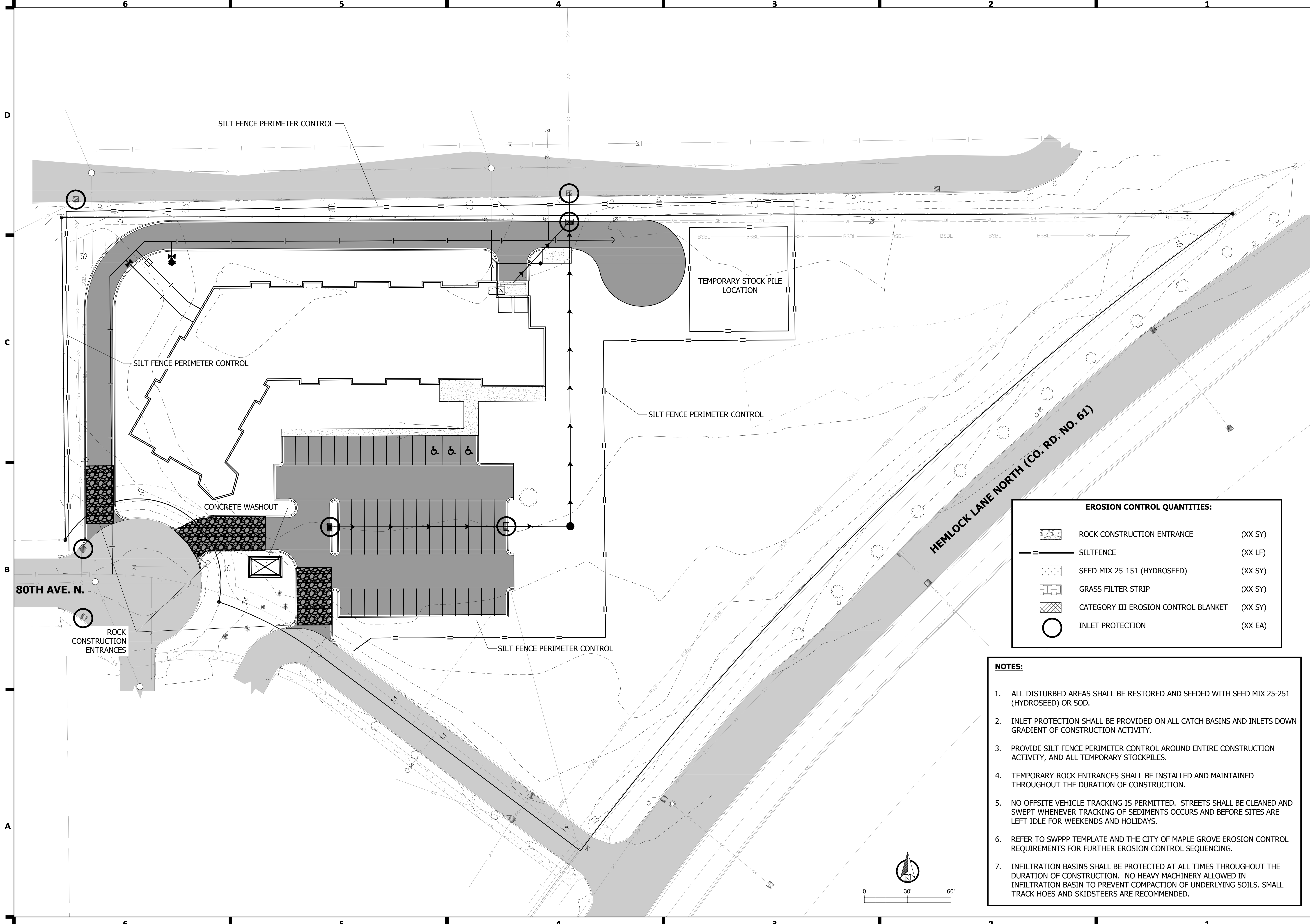
1. THE LOCATIONS AND ELEVATIONS OF THE EXISTING UTILITIES SHOWN HEREIN ARE APPROXIMATE. THEY HAVE BEEN PLOTTED FROM AVAILABLE SURVEYS AND/OR RECORDS. THE CONTRACTOR IS RESPONSIBLE TO ENSURE THAT ANY EXISTING UTILITIES (SHOWN OR NOT SHOWN) ARE NOT DAMAGED DURING CONSTRUCTION.
2. CONTRACTOR SHALL FIELD VERIFY LOCATION AND ELEVATIONS OF ALL EXISTING UNDERGROUND UTILITIES.
3. CONTRACTOR SHALL FIELD VERIFY ALL BUILDING DIMENSIONS PRIOR TO ANY CONSTRUCTION.
4. WATER SERVICE PIPE SHALL BE X" (MATERIAL). BURY AT THE LOCATIONS IDENTIFIED ON THE PLAN.
5. ALL WATER PIPING SHALL BE BURIED A MINIMUM OF 8'.
6. SEE WATER DETAILS SHEET FOR ADDITIONAL INFORMATION, SPECIFICATIONS AND DETAILS.
7. MAINTAIN A MINIMUM OF 10' OF SEPARATION BETWEEN SANITARY SEWER LINES AND WATER LINES.
8. SANITARY SEWER SERVICE PIPE AND FITTINGS SHALL BE XXXX. SANITARY SEWER SERVICES SHALL INCLUDE X" PVC WYE, X" PVC 45° BEND, PVC SERVICE PIPE AND PVC CLEANOUT WITHIN 5' OF THE BUILDING FOR UNIT'S CONNECTION.
9. SANITARY SEWER SERVICES SHALL HAVE A MINIMUM OF 1.00% GRADE
10. ALL SANITARY SEWER SERVICES ARE X" UNLESS NOTED OTHERWISE.
11. CLEANOUT SPACING SHALL NOT EXCEED 100'.
12. SEE SEWER DETAILS SHEET FOR ADDITIONAL INFORMATION, SPECIFICATIONS AND DETAILS.
13. WHERE THE WATER SERVICE PIPE MUST CROSS THE BUILDING SEWER, THE BOTTOM OF THE WATER SERVICE PIPE LOCATED WITHIN TEN FEET OF THE POINT OF CROSSING SHALL BE AT LEAST 12 INCHES ABOVE THE TOP OF THE SEWER, EXCEPT WHERE THIS IS NOT FEASIBLE, THE SEWER SHALL BE OF CAST IRON OR PLASTIC 6A, 6B, 6C(2), 6C(3), OR 6C(4) (part 4715.0420, subpart 3) FOR AT LEAST TEN FEET ON EITHER SIDE OF THE CROSSING.
14. ALL CONSTRUCTION AND MATERIALS SHALL BE IN ACCORDANCE WITH THE MINNESOTA STATE PLUMBING CODE.
15. ALL PIPING SHALL BE TESTED IN ACCORDANCE WITH THE MINNESOTA STATE PLUMBING CODE.
16. ALL OFFSITE IMPROVEMENTS SHALL BE THE RESPONSIBILITY OF THE OWNER BUT SHALL BE PUBLIC IMPROVEMENTS OWNED AND MAINTAINED BY THE CITY (WATERMAIN).
17. ALL IMPROVEMENTS SHALL REMAIN VISIBLE UNTIL INSPECTION BY THE CITY'S PUBLIC WORKS STAFF.
18. GOPHER STATE ONE CALL DAMAGE PREVENTION SYSTEM FOR BURIED UTILITIES. 1-800-252-1166



JLG ARCHITECTS
BOTTINEAU RIDGE II APARTMENTS
 MAPLE GROVE, MN

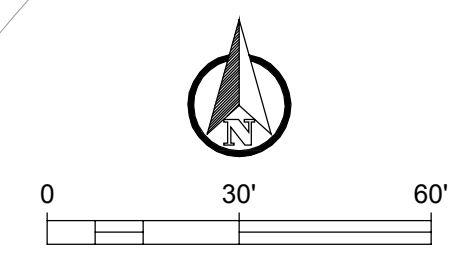
DATE	11/30/16
PHASE	
PROJECT	16098
SHEET	C301
UTILITY PLAN	

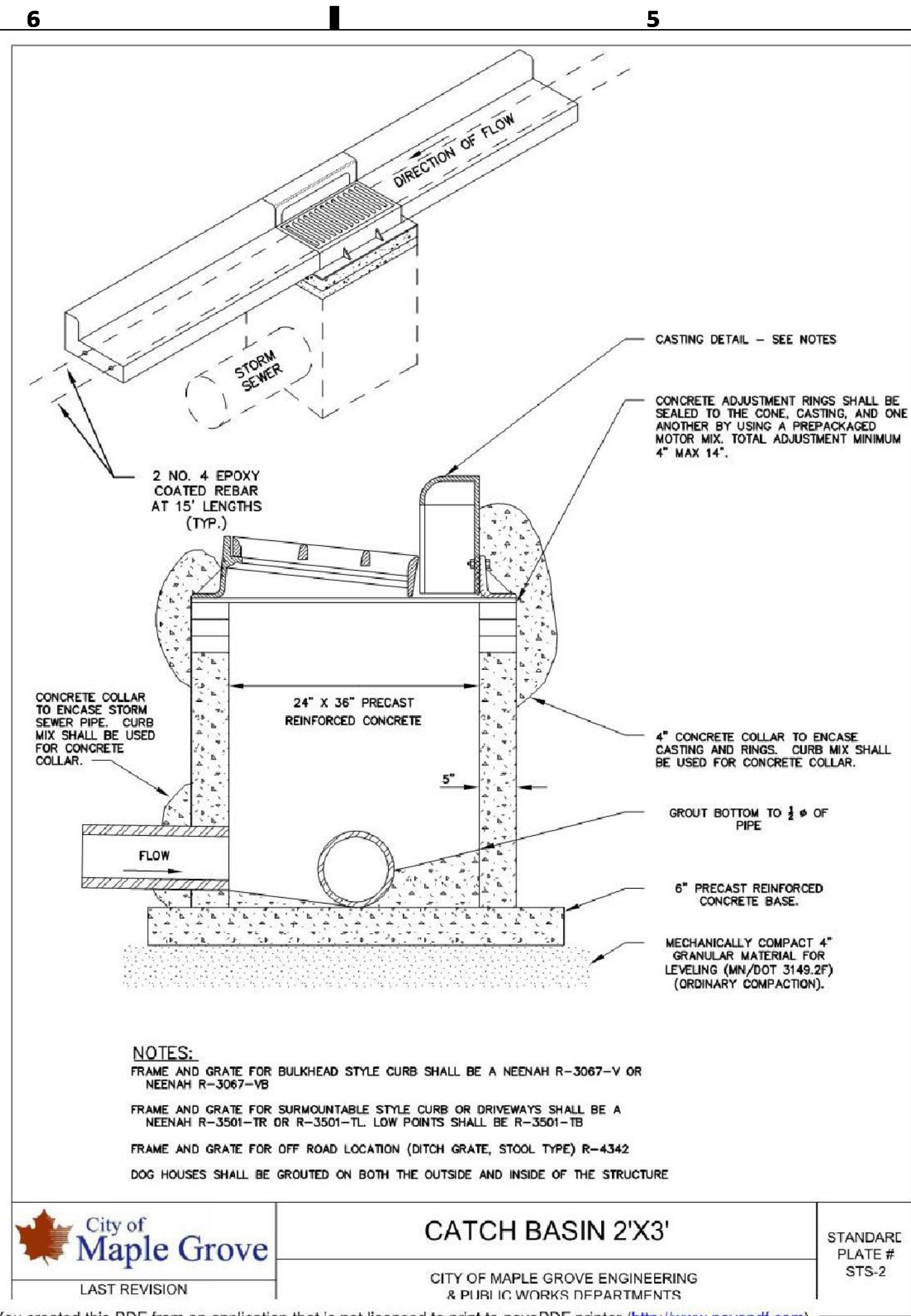
REVISION SCHEDULE		
NO.	DESCRIPTION	DATE



EROSION CONTROL QUANTITIES:		
	ROCK CONSTRUCTION ENTRANCE	(XX SY)
	SILTFENCE	(XX LF)
	SEED MIX 25-151 (HYDROSEED)	(XX SY)
	GRASS FILTER STRIP	(XX SY)
	CATEGORY III EROSION CONTROL BLANKET	(XX SY)
	INLET PROTECTION	(XX EA)

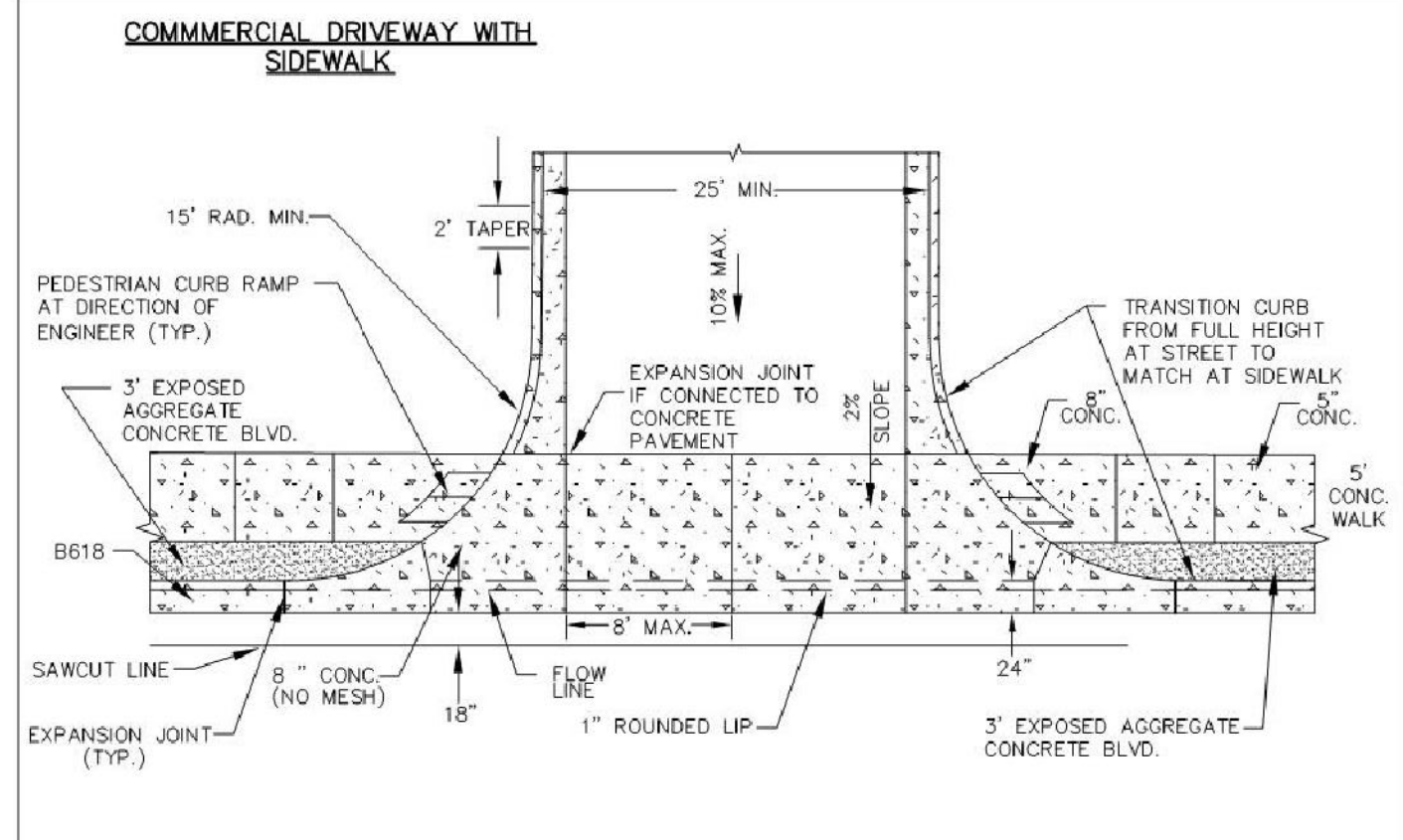
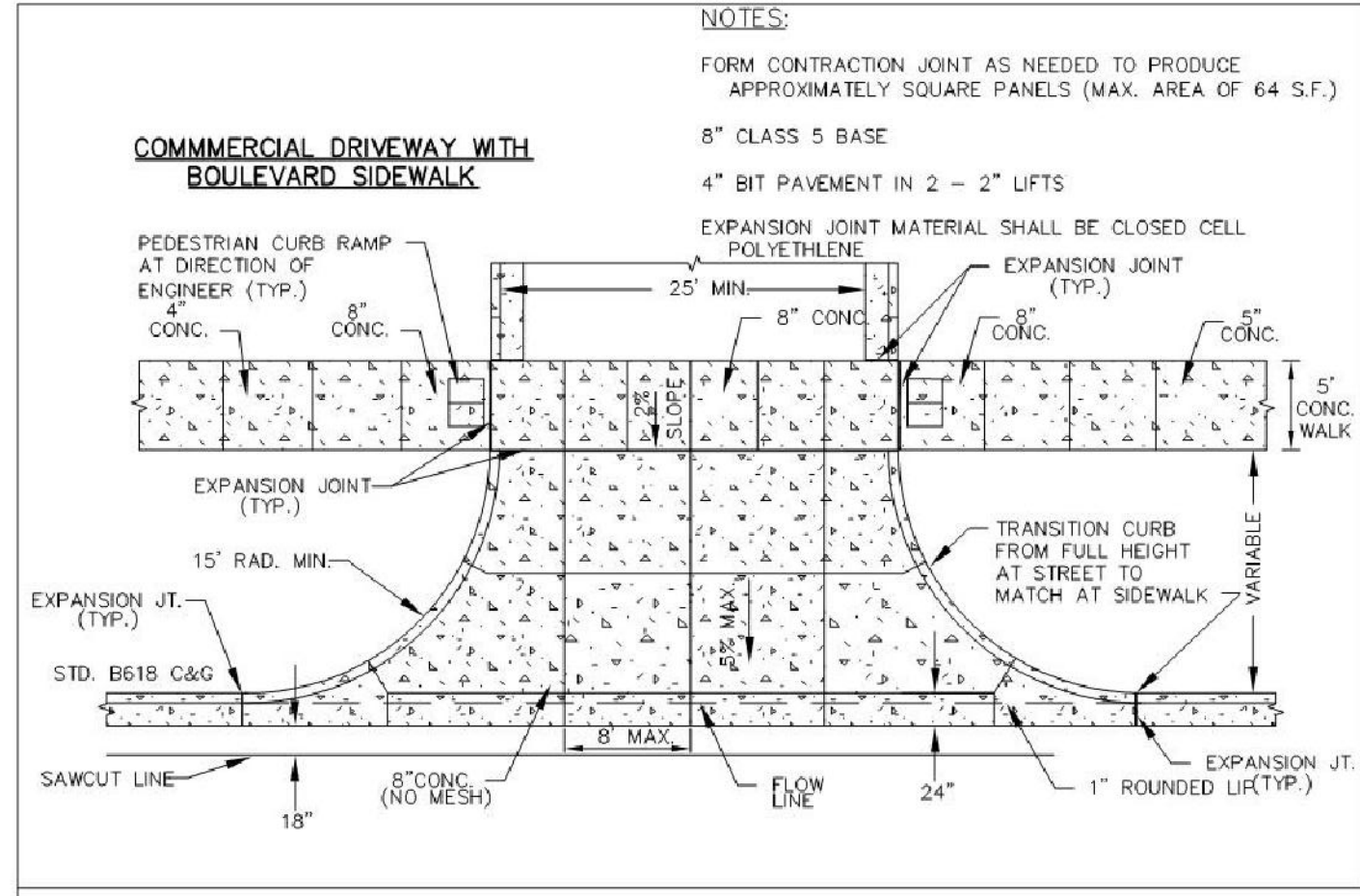
- NOTES:**
- ALL DISTURBED AREAS SHALL BE RESTORED AND SEEDED WITH SEED MIX 25-251 (HYDROSEED) OR SOD.
 - INLET PROTECTION SHALL BE PROVIDED ON ALL CATCH BASINS AND INLETS DOWN GRADIENT OF CONSTRUCTION ACTIVITY.
 - PROVIDE SILT FENCE PERIMETER CONTROL AROUND ENTIRE CONSTRUCTION ACTIVITY, AND ALL TEMPORARY STOCKPILES.
 - TEMPORARY ROCK ENTRANCES SHALL BE INSTALLED AND MAINTAINED THROUGHOUT THE DURATION OF CONSTRUCTION.
 - NO OFFSITE VEHICLE TRACKING IS PERMITTED. STREETS SHALL BE CLEANED AND SWEEPED WHENEVER TRACKING OF SEDIMENTS OCCURS AND BEFORE SITES ARE LEFT IDLE FOR WEEKENDS AND HOLIDAYS.
 - REFER TO SWPPP TEMPLATE AND THE CITY OF MAPLE GROVE EROSION CONTROL REQUIREMENTS FOR FURTHER EROSION CONTROL SEQUENCING.
 - INFILTRATION BASINS SHALL BE PROTECTED AT ALL TIMES THROUGHOUT THE DURATION OF CONSTRUCTION. NO HEAVY MACHINERY ALLOWED IN INFILTRATION BASIN TO PREVENT COMPACTION OF UNDERLYING SOILS. SMALL TRACK HOES AND SKIDSTEERS ARE RECOMMENDED.



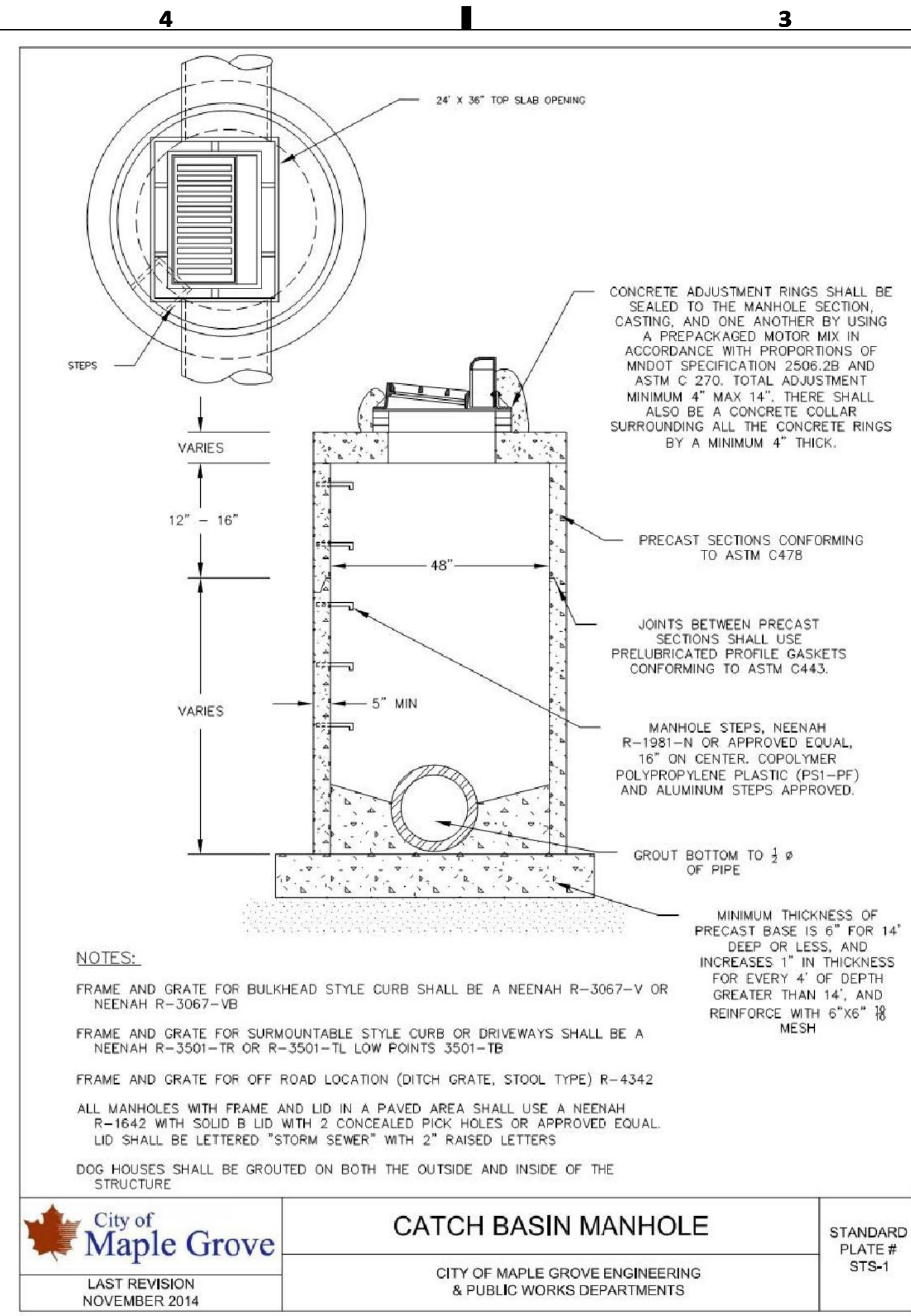


	CATCH BASIN 2'X3'	STANDARD PLATE # STS-2
LAST REVISION	CITY OF MAPLE GROVE ENGINEERING & PUBLIC WORKS DEPARTMENTS	

You created this PDF from an application that is not licensed to print to novaPDF printer (<http://www.novapdf.com>)

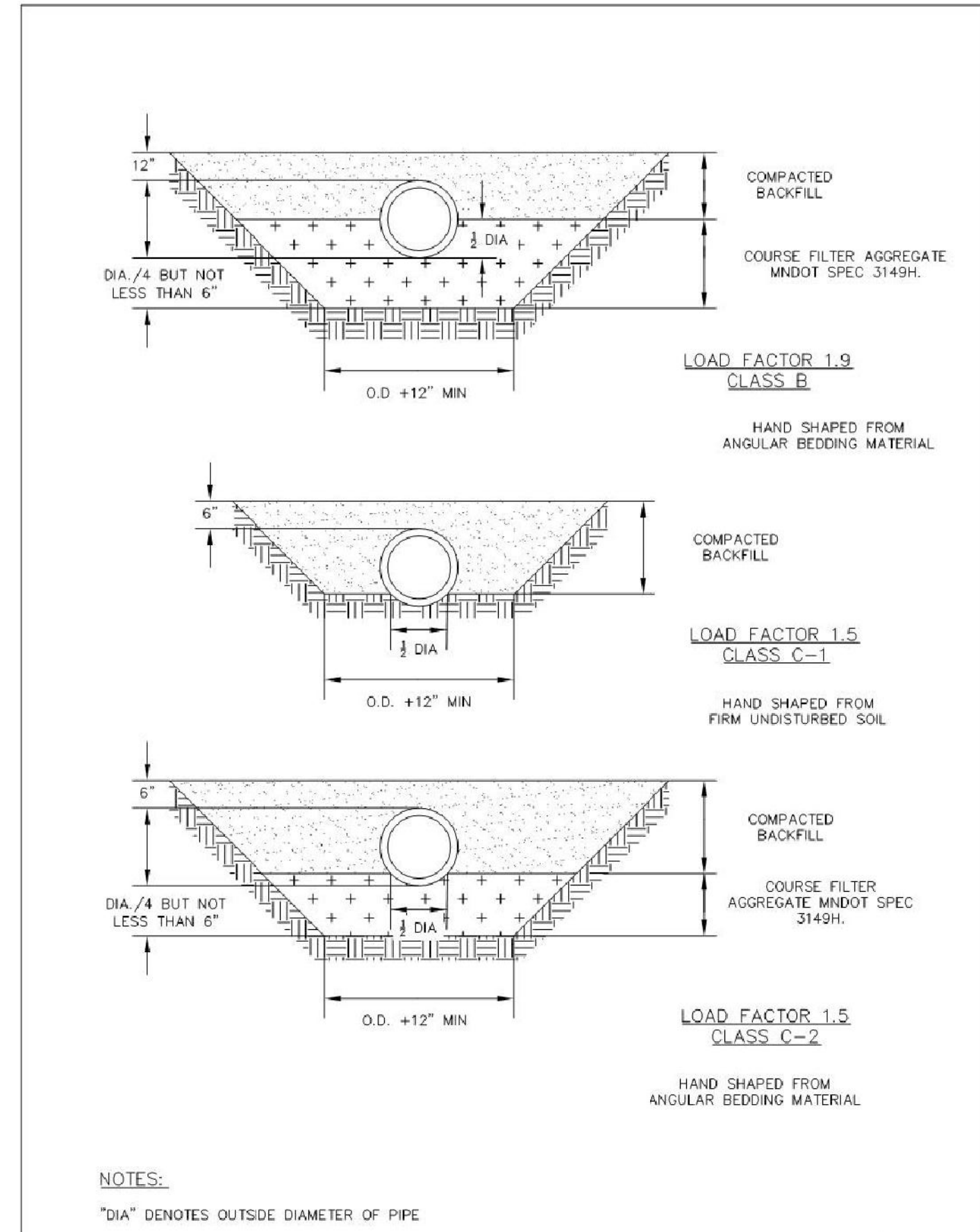


	INDUSTRIAL / COMMERCIAL DRIVEWAY APRON	STANDARD PLATE # CONC-10
LAST REVISION NOVEMBER 2014	CITY OF MAPLE GROVE ENGINEERING & PUBLIC WORKS DEPARTMENTS	

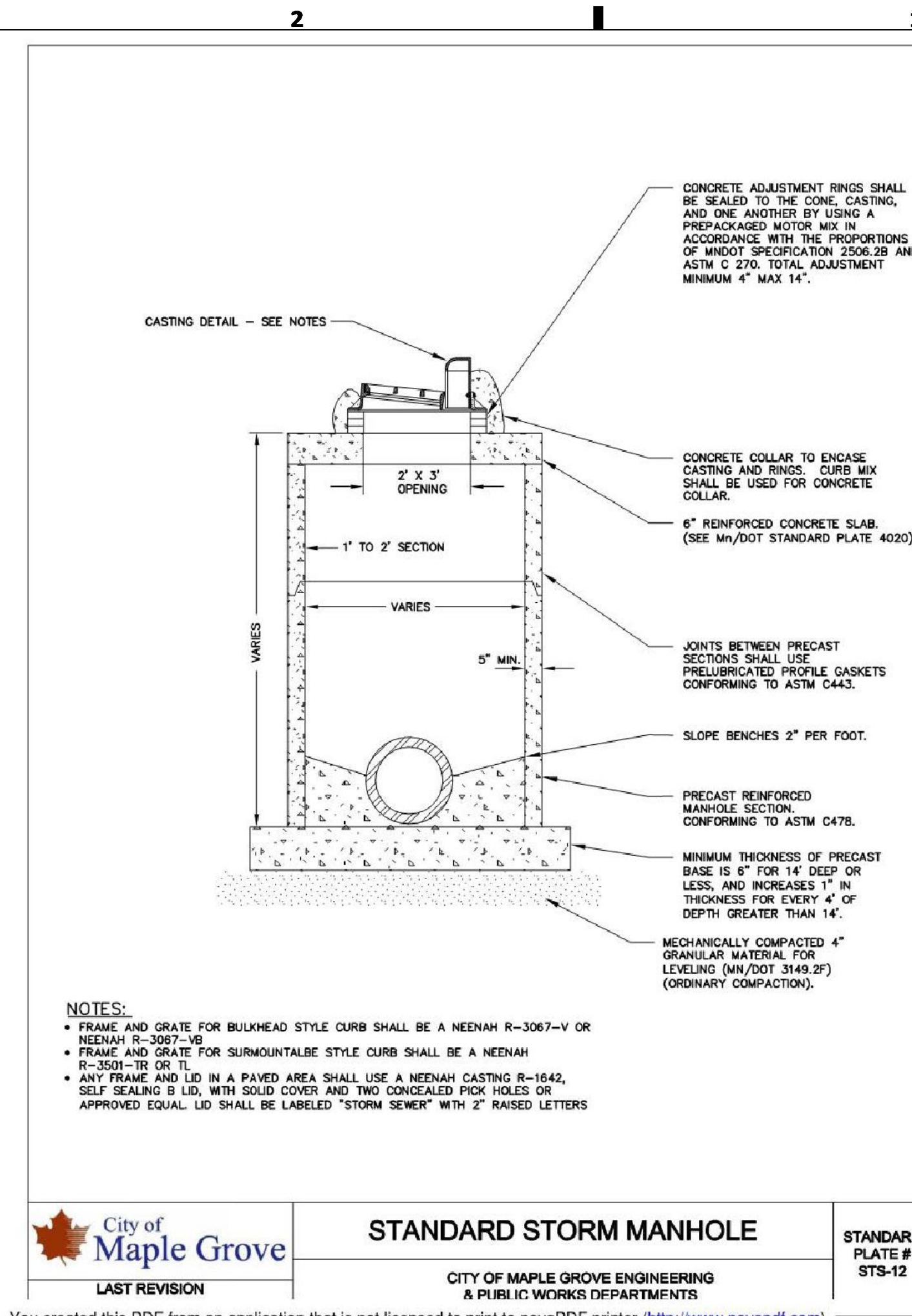


	CATCH BASIN MANHOLE	STANDARD PLATE # STS-1
LAST REVISION NOVEMBER 2014	CITY OF MAPLE GROVE ENGINEERING & PUBLIC WORKS DEPARTMENTS	

You created this PDF from an application that is not licensed to print to novaPDF printer (<http://www.novapdf.com>)

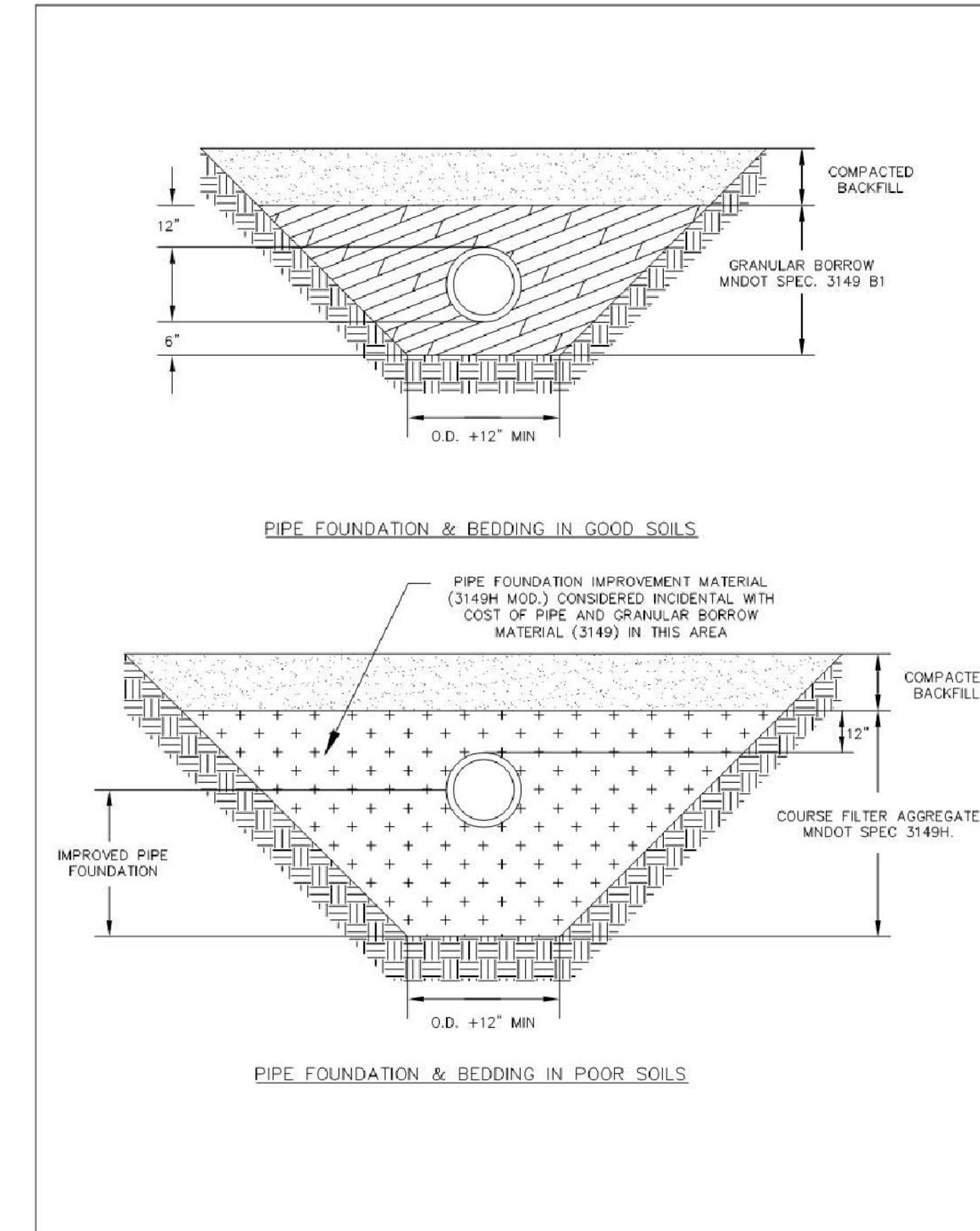


	PIPE BEDDING METHODS FOR RCP OR DIP	STANDARD PLATE # SS-14
LAST REVISION NOVEMBER 2014	CITY OF MAPLE GROVE ENGINEERING & PUBLIC WORKS DEPARTMENTS	



	STANDARD STORM MANHOLE	STANDARD PLATE # STS-12
LAST REVISION	CITY OF MAPLE GROVE ENGINEERING & PUBLIC WORKS DEPARTMENTS	

You created this PDF from an application that is not licensed to print to novaPDF printer (<http://www.novapdf.com>)



	PIPE BEDDING METHODS FOR PVC	STANDARD PLATE # SS-15
LAST REVISION NOVEMBER 2014	CITY OF MAPLE GROVE ENGINEERING & PUBLIC WORKS DEPARTMENTS	



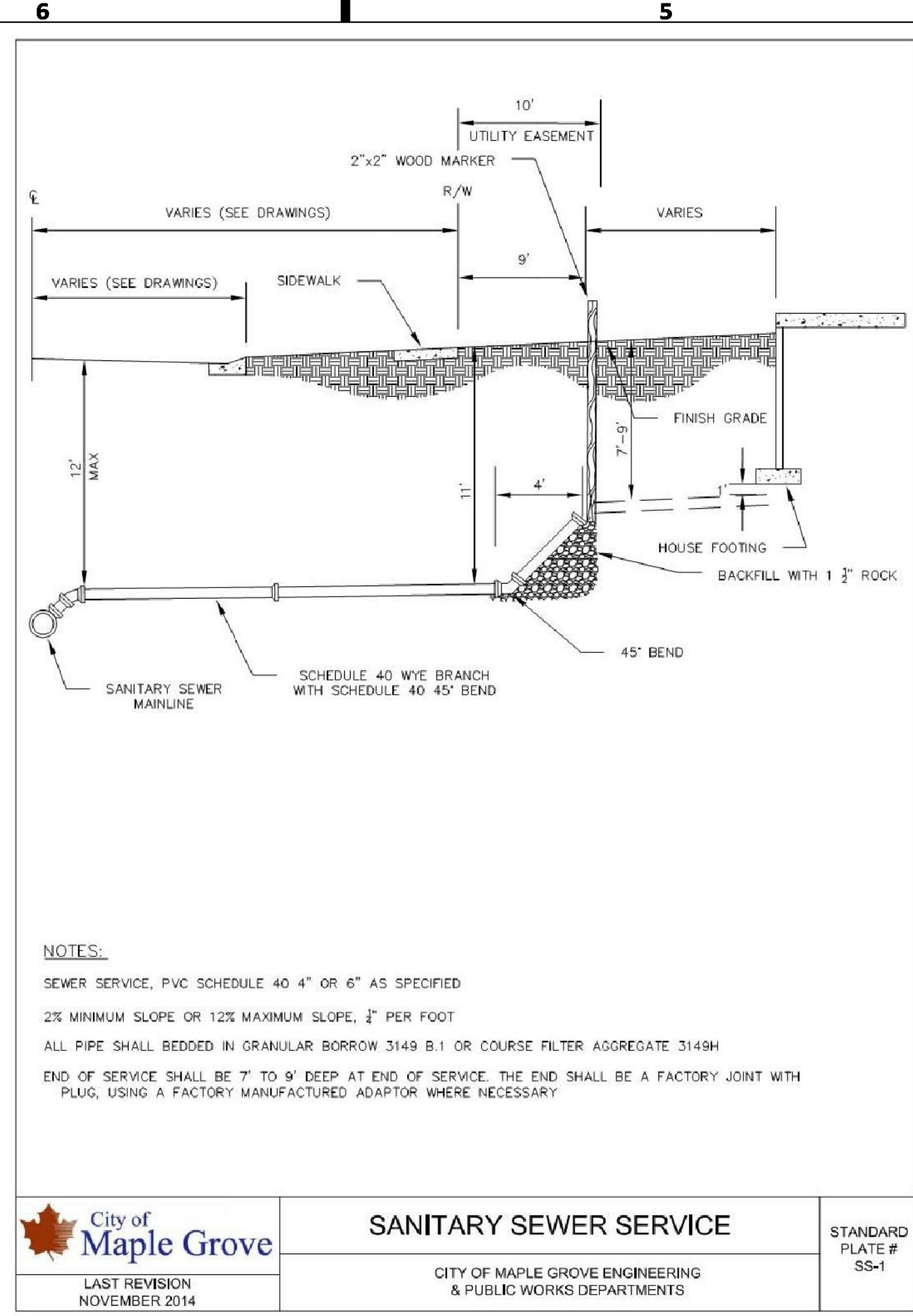
322 1st Ave N, Suite #600
 Minneapolis, MN 55401
 phone 612.746.4260
 facsimile 612.746.4754
 www.jlgarchitects.com
 copyright © 2016

PRELIMINARY
 NOT FOR CONSTRUCTION

REVISION SCHEDULE		
NO.	DESCRIPTION	DATE

JLG ARCHITECTS
BOTTINEAU RIDGE II APARTMENTS
 MAPLE GROVE, MN

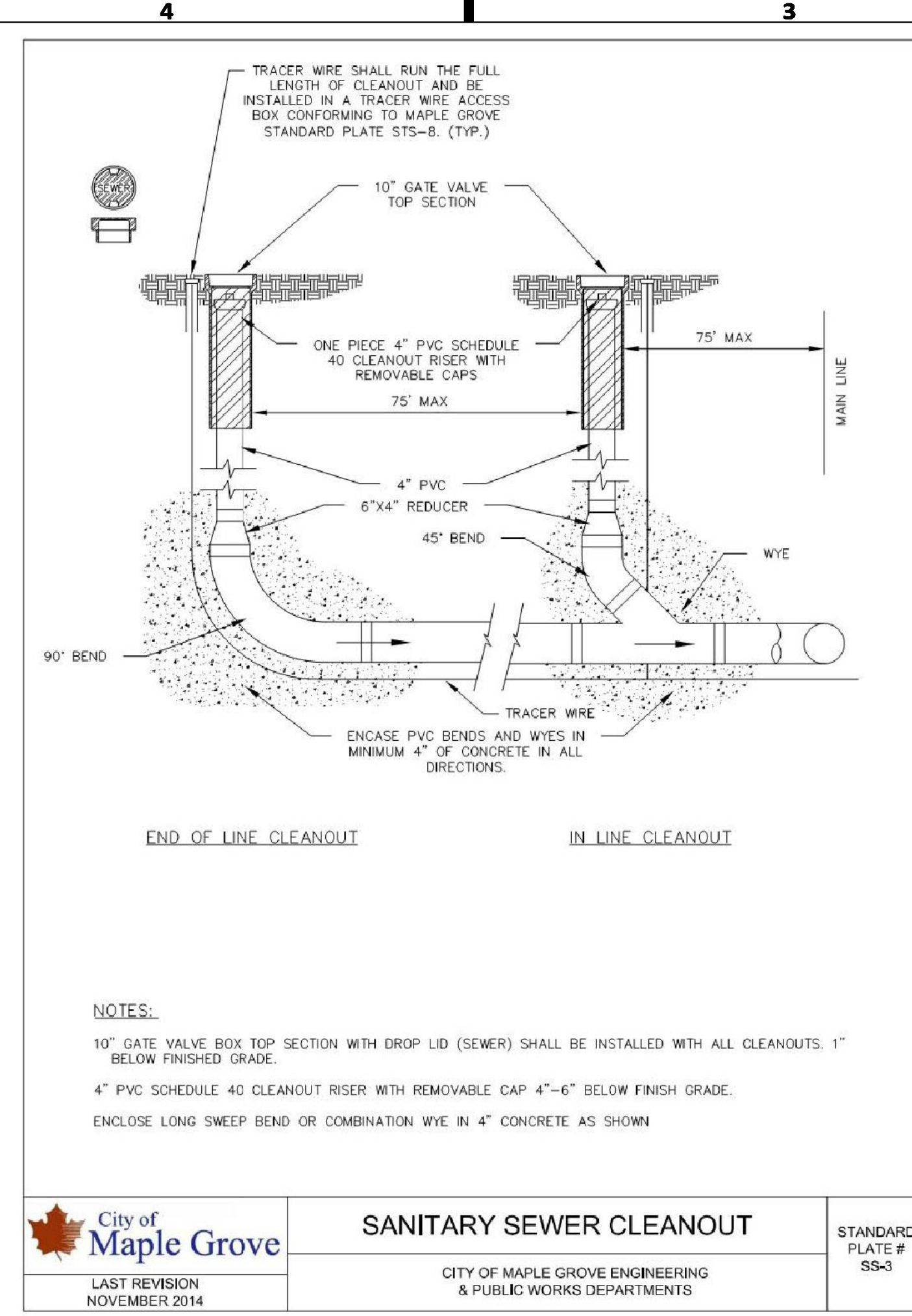
DATE	11/30/16
PHASE	
PROJECT	16098
SHEET	C502
CIVIL DETAILS	



City of Maple Grove
 LAST REVISION NOVEMBER 2014

SANITARY SEWER SERVICE
 CITY OF MAPLE GROVE ENGINEERING & PUBLIC WORKS DEPARTMENTS

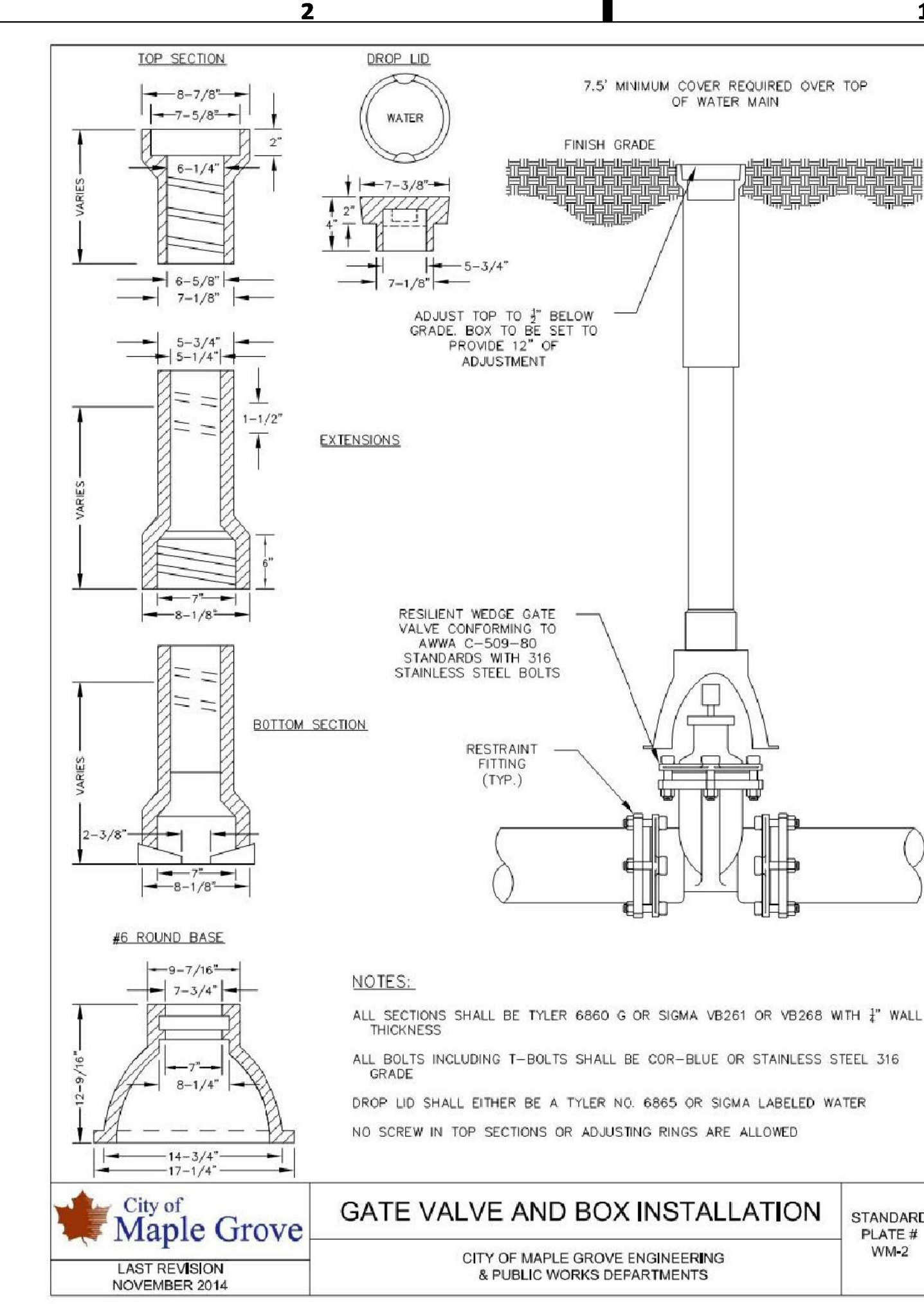
STANDARD PLATE # SS-1



City of Maple Grove
 LAST REVISION NOVEMBER 2014

SANITARY SEWER CLEANOUT
 CITY OF MAPLE GROVE ENGINEERING & PUBLIC WORKS DEPARTMENTS

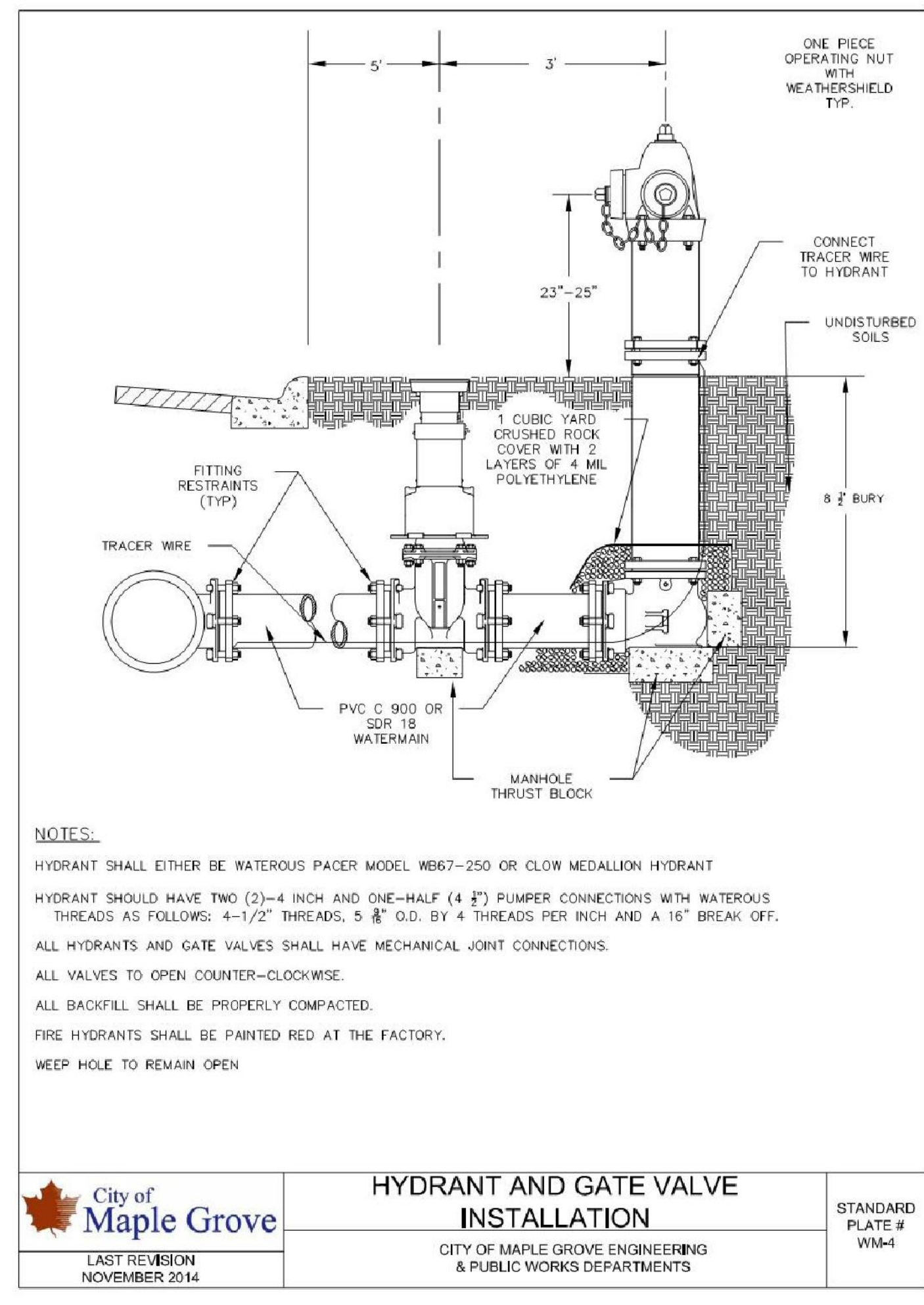
STANDARD PLATE # SS-3



City of Maple Grove
 LAST REVISION NOVEMBER 2014

GATE VALVE AND BOX INSTALLATION
 CITY OF MAPLE GROVE ENGINEERING & PUBLIC WORKS DEPARTMENTS

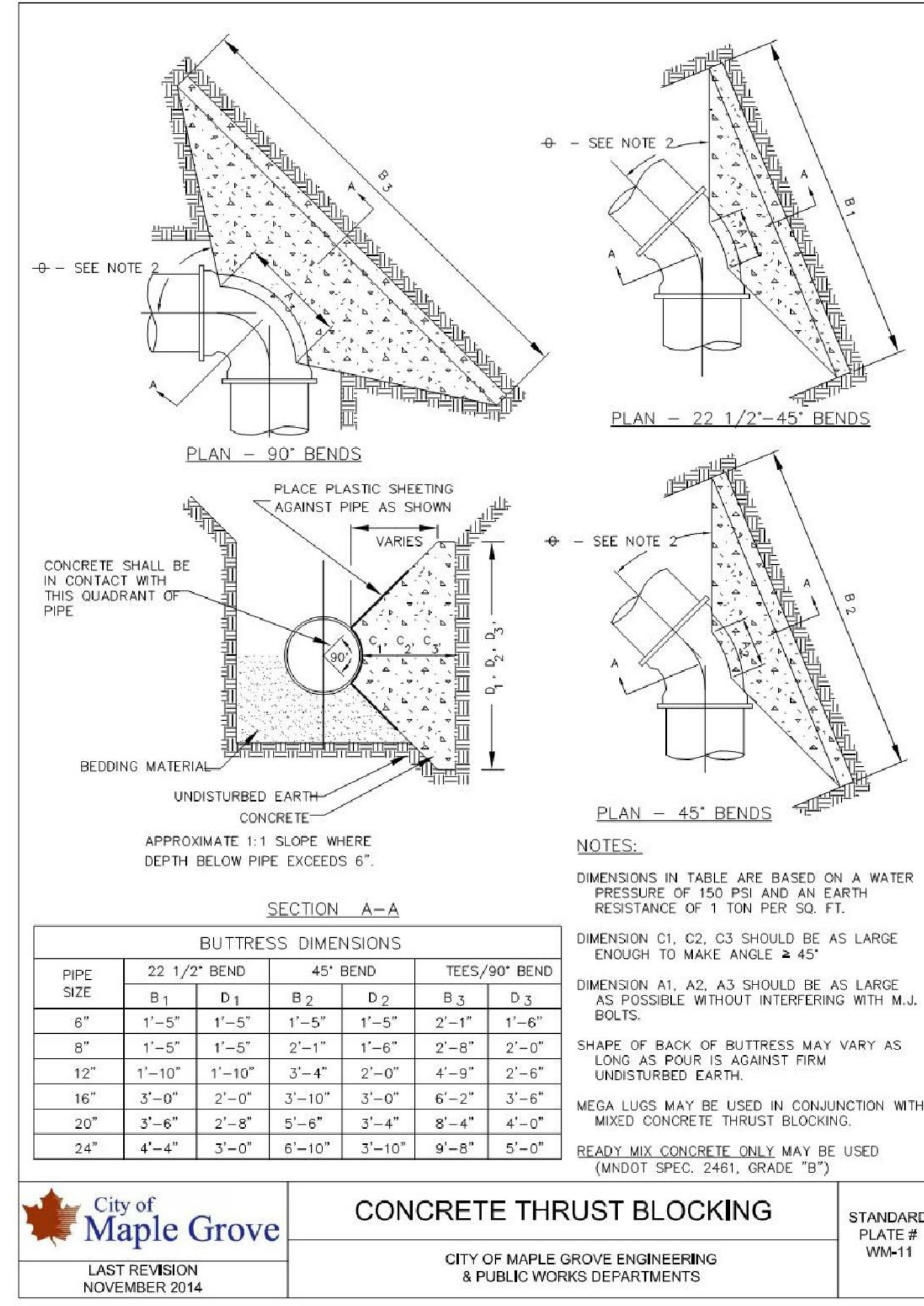
STANDARD PLATE # WM-2



City of Maple Grove
 LAST REVISION NOVEMBER 2014

HYDRANT AND GATE VALVE INSTALLATION
 CITY OF MAPLE GROVE ENGINEERING & PUBLIC WORKS DEPARTMENTS

STANDARD PLATE # WM-4



City of Maple Grove
 LAST REVISION NOVEMBER 2014

CONCRETE THRUST BLOCKING
 CITY OF MAPLE GROVE ENGINEERING & PUBLIC WORKS DEPARTMENTS

STANDARD PLATE # WM-11



322 1st Ave N, Suite #600
 Minneapolis, MN 55401
 phone 612.746.4260
 facsimile 612.746.4754
 www.jlgarchitects.com
 copyright © 2016

PRELIMINARY
 NOT FOR CONSTRUCTION

REVISION SCHEDULE		
NO.	DESCRIPTION	DATE

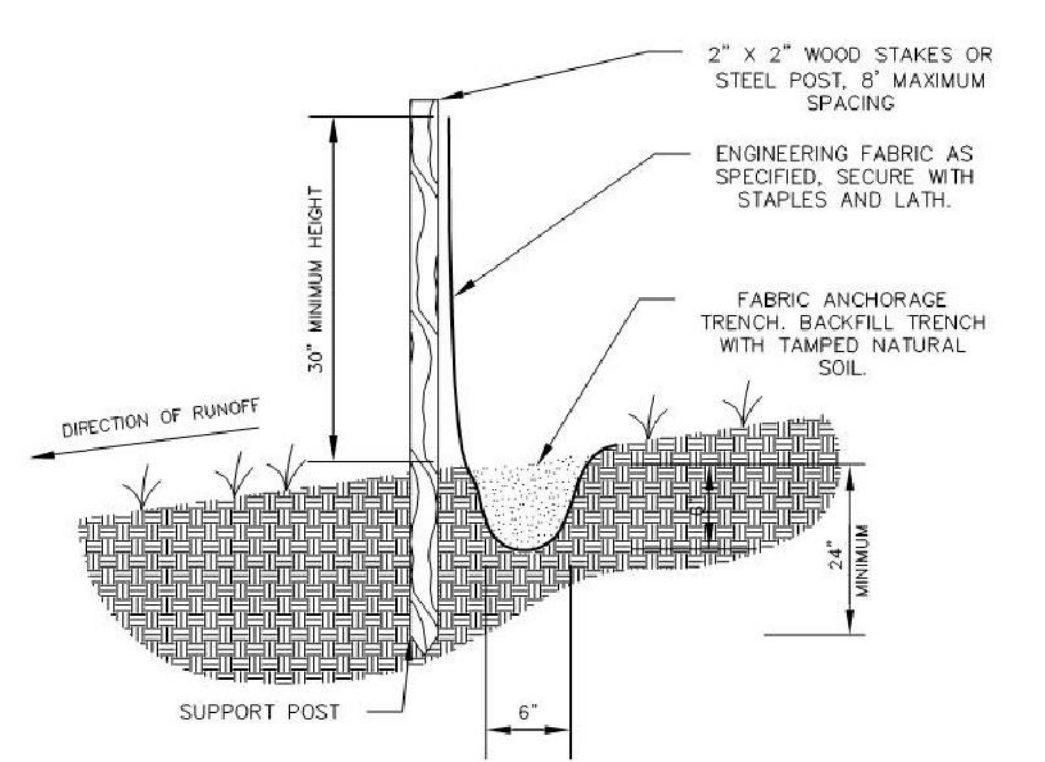
JLG ARCHITECTS
BOTTINEAU RIDGE II APARTMENTS
 MAPLE GROVE, MN

DATE
11/30/16

PHASE

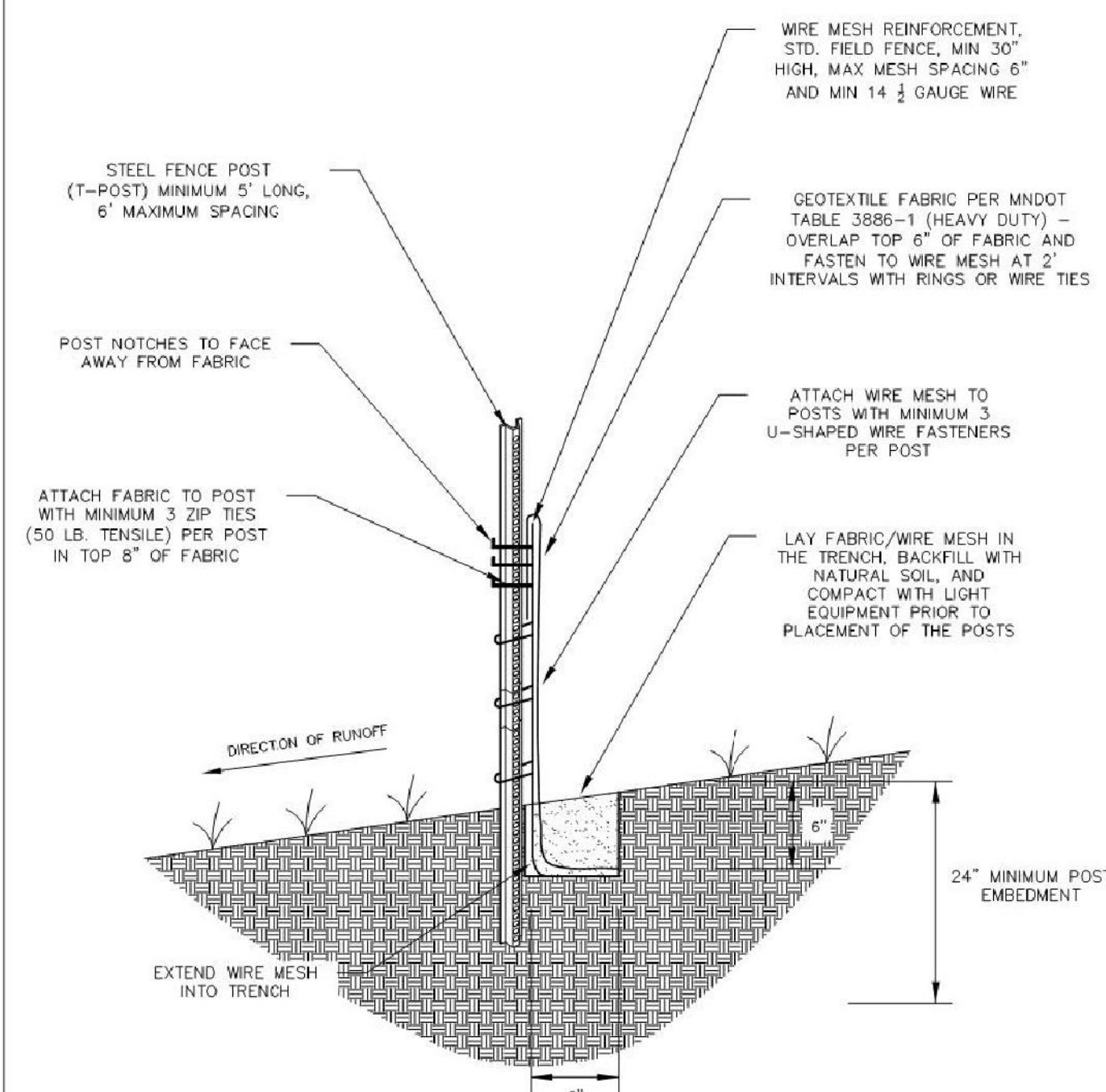
PROJECT
16098

SHEET
C503
 CIVIL DETAILS



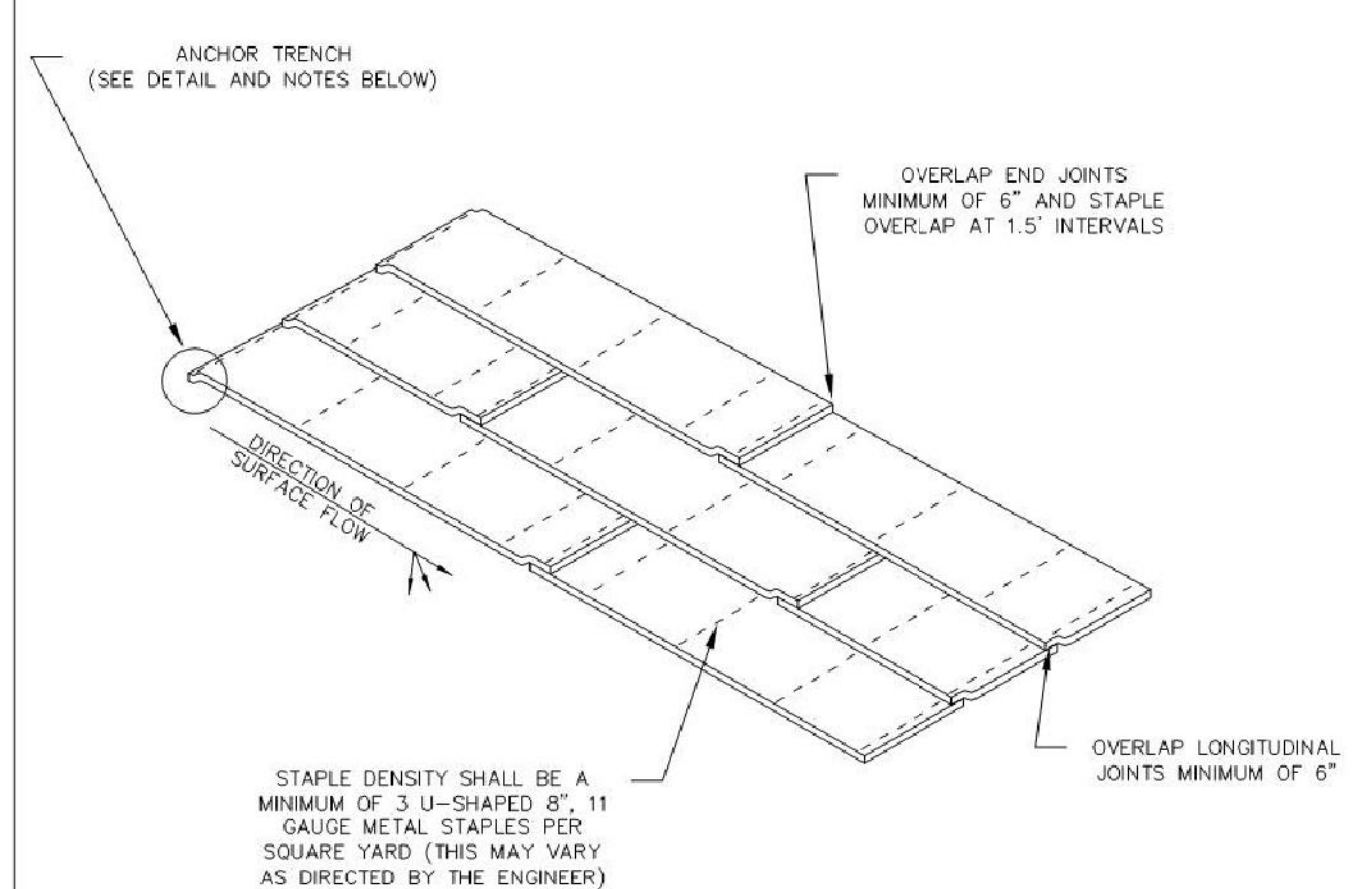
SILT FENCE
 CITY OF MAPLE GROVE ENGINEERING & PUBLIC WORKS DEPARTMENTS
 STANDARD PLATE # EROS-1
 LAST REVISION NOVEMBER 2014

You created this PDF from an application that is not licensed to print to novaPDF printer (<http://www.novapdf.com>)

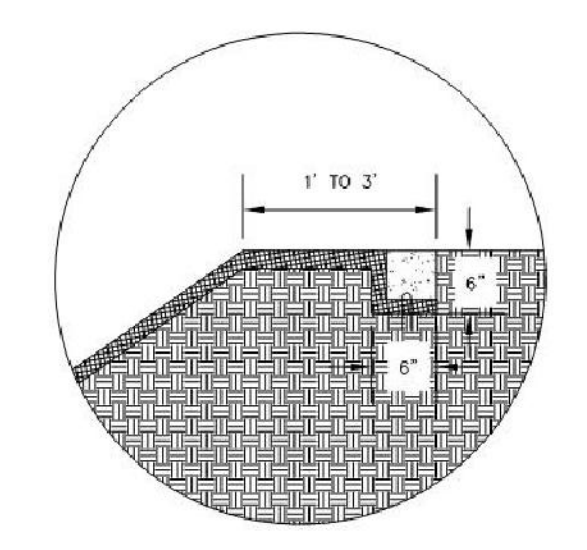


HEAVY DUTY SILT FENCE
 CITY OF MAPLE GROVE ENGINEERING & PUBLIC WORKS DEPARTMENTS
 STANDARD PLATE # EROS-2
 LAST REVISION NOVEMBER 2014

You created this PDF from an application that is not licensed to print to novaPDF printer (<http://www.novapdf.com>)

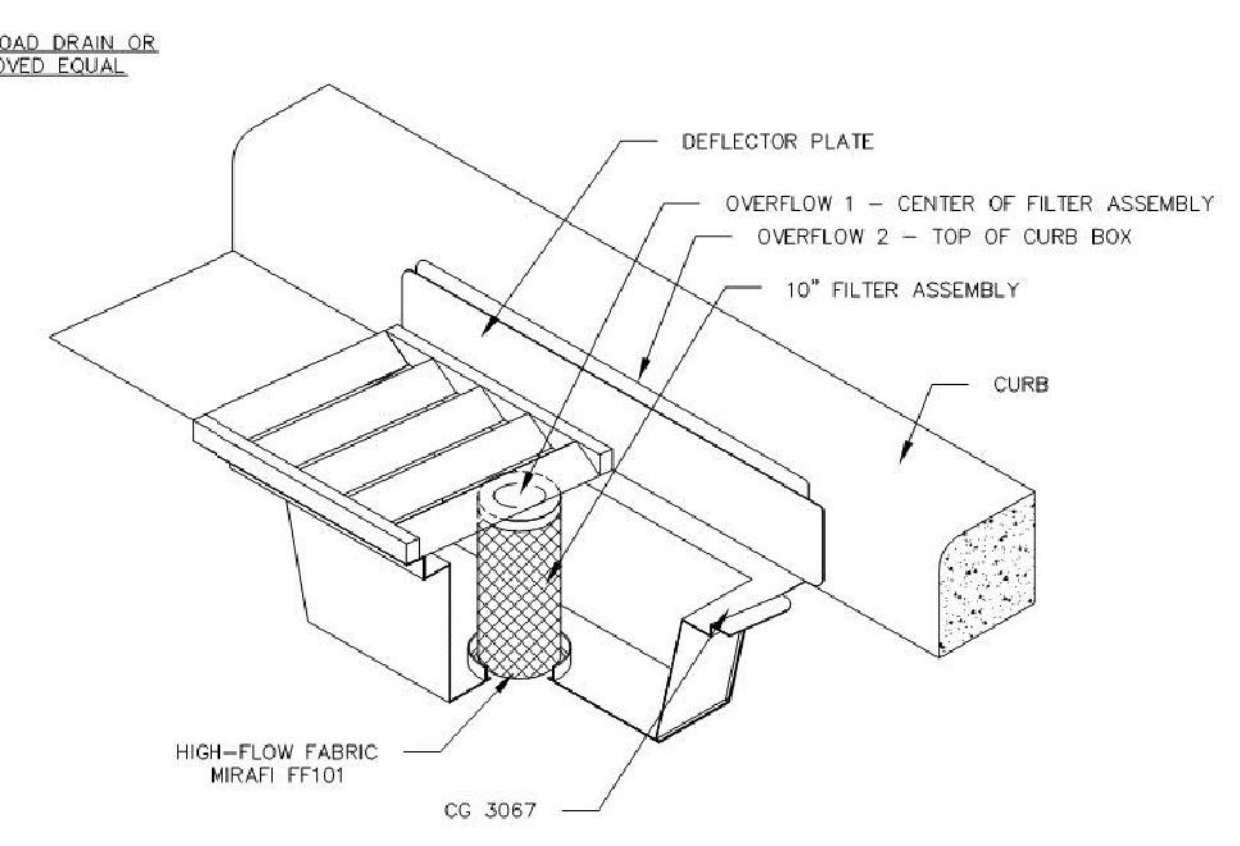


- ANCHOR TRENCH**
 1. DIG 6" X 6" TRENCH
 2. LAY BLANKET IN TRENCH
 3. STAPLE AT 1.5' INTERVALS
 4. BACKFILL WITH NATURAL SOIL AND COMPACT
 5. BLANKET LENGTH SHALL NOT EXCEED 100' WITHOUT AN ANCHOR TRENCH



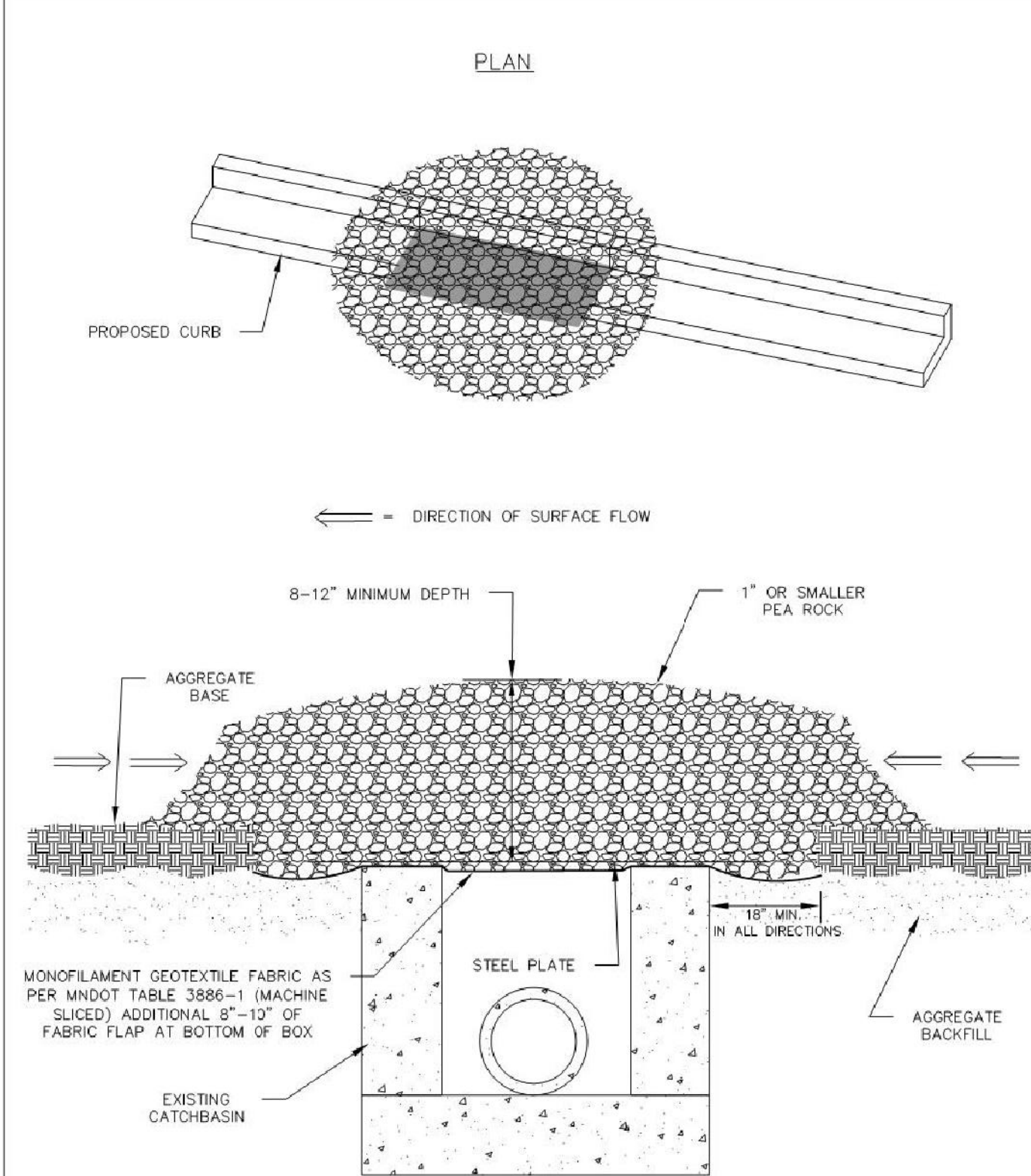
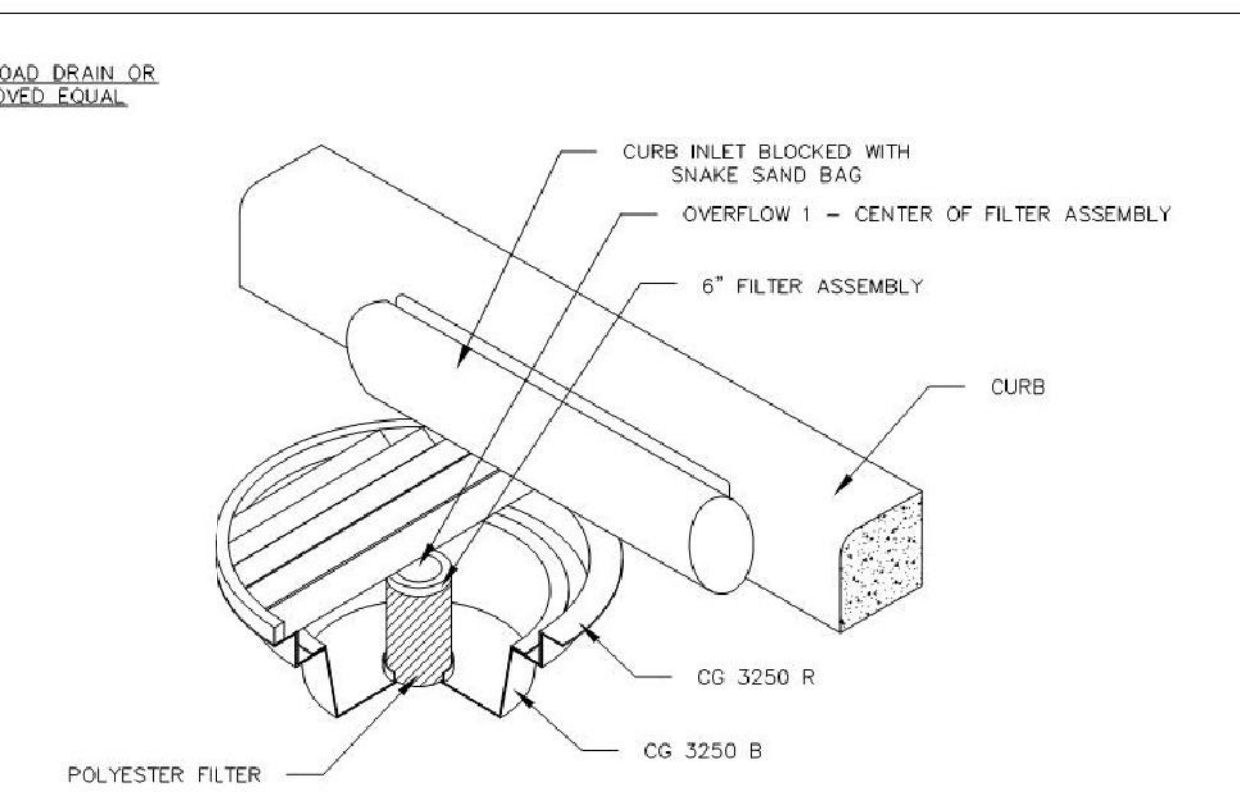
EROSION CONTROL BLANKET INSTALLATION
 CITY OF MAPLE GROVE ENGINEERING & PUBLIC WORKS DEPARTMENTS
 STANDARD PLATE # EROS-5
 LAST REVISION NOVEMBER 2014

You created this PDF from an application that is not licensed to print to novaPDF printer (<http://www.novapdf.com>)



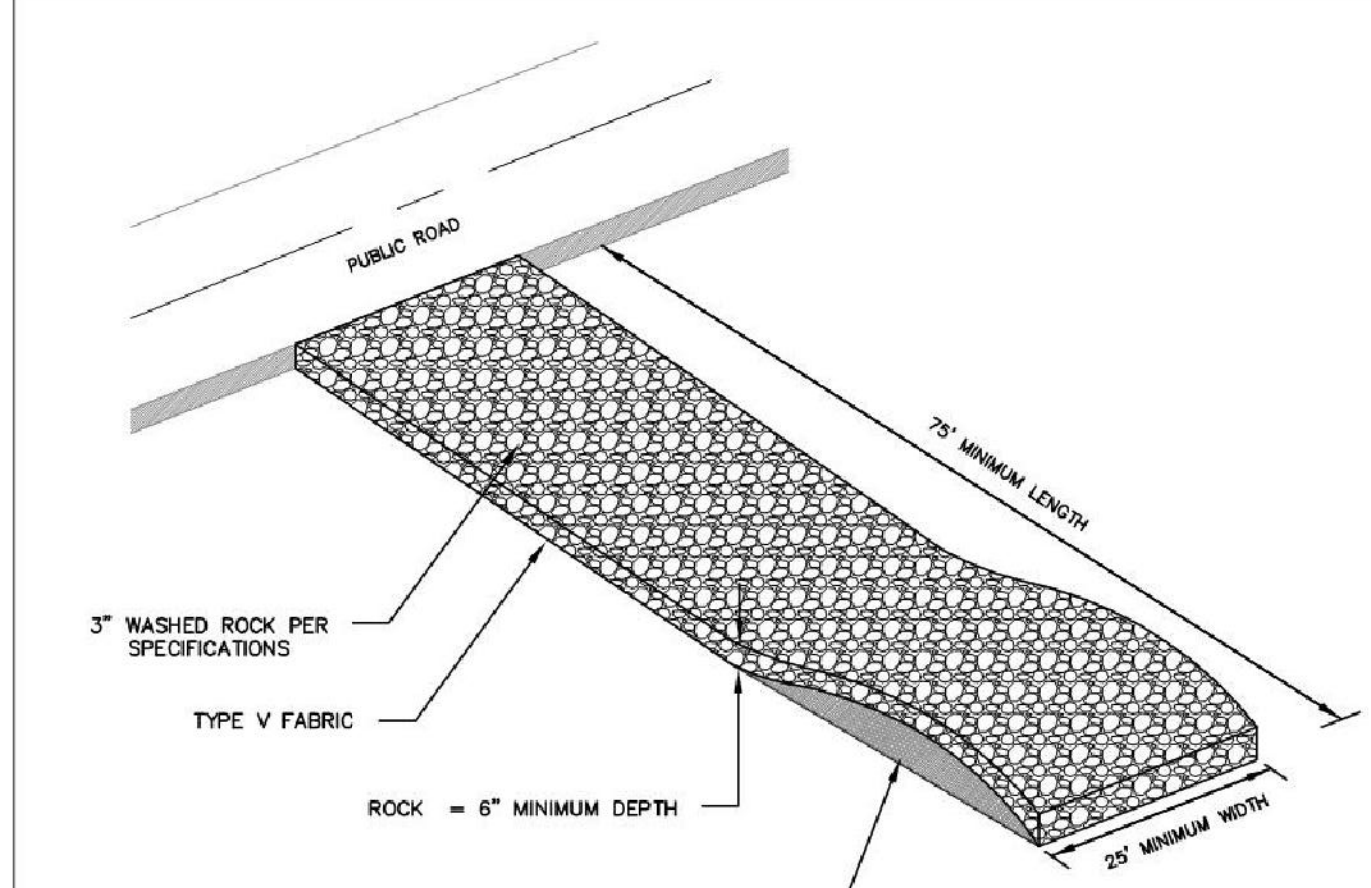
CURB INLET PROTECTIONS
 CITY OF MAPLE GROVE ENGINEERING & PUBLIC WORKS DEPARTMENTS
 STANDARD PLATE # EROS-19
 LAST REVISION NOVEMBER 2014

You created this PDF from an application that is not licensed to print to novaPDF printer (<http://www.novapdf.com>)



INLET PROTECTION ROCK FILTER FOR CATCH BASIN DURING ROAD CONSTRUCTION
 CITY OF MAPLE GROVE ENGINEERING & PUBLIC WORKS DEPARTMENTS
 STANDARD PLATE # EROS-7
 LAST REVISION NOVEMBER 2014

You created this PDF from an application that is not licensed to print to novaPDF printer (<http://www.novapdf.com>)



- NOTE:**
 TYPE V FILTER FABRIC SHALL BE PLACED UNDER ROCK TO STOP MUD MIGRATION THROUGH MATERIAL.
 THE ENTRANCE SHALL BE MAINTAINED IN A CONDITION THAT WILL PREVENT TRACKING OF FLOWING OF SEDIMENT ONTO PUBLIC RIGHT-OF-WAYS. THIS MAY REQUIRE TOP DRESSING, REPAIR AND/OR CLEAN OUT OF ANY MEASURES USED TO TRAP SEDIMENT.
 WHEN NECESSARY, WHEELS SHALL BE CLEANED PRIOR TO ENTRANCE ONTO PUBLIC RIGHT-OF-WAY.
 WHEN WASHING IS REQUIRED, IT SHALL BE DONE ON AN AREA STABILIZED WITH CRUSHED STONE THAT DRAINS INTO AN APPROVED SEDIMENT TRAP OR SEDIMENT BASIN.
 WHERE RUNOFF CONTAINING SEDIMENT LADEN WATER IS LEAVING THE SITE VIA THE CONSTRUCTION ENTRANCE, OTHER MEASURES SHALL BE IMPLEMENTED TO DIVERT RUNOFF THROUGH AN APPROVED FILTERING SYSTEM

CONSTRUCTION ROCK ENTRANCE
 CITY OF MAPLE GROVE ENGINEERING & PUBLIC WORKS DEPARTMENTS
 STANDARD PLATE # EROS-13
 LAST REVISION NOVEMBER 2014

You created this PDF from an application that is not licensed to print to novaPDF printer (<http://www.novapdf.com>)



322 1st Ave N, Suite #600
 Minneapolis, MN 55401
 phone 612.746.4260
 facsimile 612.746.4754
 www.jlgarchitects.com
 copyright © 2016

PRELIMINARY
 NOT FOR CONSTRUCTION

REVISION SCHEDULE		
NO.	DESCRIPTION	DATE

JLG ARCHITECTS
BOTTINEAU RIDGE II APARTMENTS
 MAPLE GROVE, MN

DATE
11/30/16
 PHASE
 PROJECT
16098
 SHEET
C504
 EROSION CONTROL
 DETAILS