

# MECHANICAL SYMBOL SCHEDULE

SYMBOL	DESCRIPTION	SYMBOL	DESCRIPTION	SYMBOL	DESCRIPTION
<b>MISCELLANEOUS</b>					
	CONNECT TO EXISTING		SHUT-OFF VALVE		THERMOSTAT
	FLOOR ELEVATION POINT		BUTTERFLY VALVE		HUMIDISTAT
	KEY NOTE		CHECK VALVE		SPACE TEMPERATURE SENSOR
	PLUMBING FIXTURE ID		DOUBLE CHECK VALVE OR RPZ		PRESSURE SENSOR
	MECHANICAL EQUIPMENT		FLOW FITTING		THERMOMETER
	EQUIPMENT BY OTHERS		DOMESTIC RECIRCULATING HOT WATER BALANCING ASSEMBLY	<b>SHEET METAL</b>	
	PUMP		CHECK VALVE		AIR SUPPLY
	REVISION		BALANCING BALL PORT BALL VALVE		RETURN OR EXHAUST AIR DUCT, WIDTH/DEPTH
	TRUE NORTH		VALVE IN VERTICAL		DUCT, DIAMETER
<b>ABBREVIATIONS</b>					
AFF	ABOVE FINISHED FLOOR		BALL/BALANCING VALVE		DUCT, FLEXIBLE TO RIGID
AFE	ABOVE FINISHED GRADE		HOSE BIB OR WALL HYDRANT		DUCT AIR SUPPLY, UP
BOB	BOTTOM OF BEAM		ELBOW UP		DUCT AIR RETURN OR EXHAUST, UP
BOP	BOTTOM OF PIPE		TEE UP		DUCT AIR SUPPLY, DOWN
BOFA	BOTTOM OF FLOOR ABOVE		TEE DOWN		DUCT AIR RETURN OR EXHAUST, DOWN
CA	COMBUSTION AIR		PIPE CAP		DUCT BREAK
CONT	CONTINUATION		UNION		WALL/SOFFIT REGISTER
CO	CLEAN OUT		PIPE ANCHOR		RETURN/EXHAUST AIR GRILLE
CS	COUNTER SINK		EXPANSION JOINT		FIRE/SMOKE DAMPER
CW	COLD WATER		PIPE GUIDE		SMOKE DAMPER
CWB	CONDENSATE WALL BOX		FLOOR CLEAN OUT		FIRE DAMPER
DN	DOWN		WALL CLEAN OUT		CEILING RADIATION DAMPER
DA	DIAMETER		GAS PRESSURE REGULATOR		GRAVITY BACKDRAFT DAMPER
DSH	DOWN SPOUT NOZZLE		WATER PRESSURE REGULATOR		MOTORIZED DAMPER
DTL	DETAIL		FLOW DIRECTION CONTROL VALVE		BALANCING DAMPER
EA	EXHAUST AIR		3 WAY CONTROL VALVE		CAPPED DUCT
EDM	ELECTRONICALLY COMMUTATED MOTOR		SOLENOID VALVE		FLEXIBLE CONNECTION
FSEC	FOOD SERVICE EQUIP. CONTR.		INCREASER OR REDUCER		REGISTER/DIFFUSER A (TYPE)
FFE	FINISHED FLOOR ELEVATION	<b>PLUMBING AND PIPE LABELS</b>			
FCW	FILTERED COLD WATER		ROOF DRAIN (CONTROL FLOW)		REGISTER/DIFFUSER H (TYPE)
FU	FIXTURE UNITS		OVERFLOW DRAIN		REGISTER/DIFFUSER C (TYPE)
GC	GENERAL CONTRACTOR		DOWNSPOUT DISCHARGE		DIFFUSER H (TYPE)
HW	HOT WATER		FLOOR DRAIN		DIFFUSER C (TYPE)
HCW	HARD COLD WATER		FLOOR SINK		RETURN AIR GRILLE A (TYPE)
KS	KITCHEN SINK		BACK WATER CHECK VALVE		RETURN AIR GRILLE C (TYPE)
LAV	LAVATORY		SHOCK ARRESTOR	<b>PIPE BREAK</b>	
INV	INVERT ELEVATION		PIPE BREAK		SAN SEWER-ABOVE GRADE
MS	MOP SINK		SAN SEWER-BELOW GRADE		GREASE WASTE
MC	NOT IN CONTRACT		FLAMMABLE WASTE		FLAMMABLE WASTE VENT
NP	NON-POTABLE		SANITARY VENT		SANITARY VENT
OA	OUTSIDE AIR		DOMESTIC COLD WATER		HARD COLD WATER
RA	RETURN AIR		DOMESTIC HOT WATER		DOMESTIC RECIRCULATING HOT WATER
SA	SUPPLY AIR		NATURAL FRIDGE GAS		NATURAL GAS - HOUSE METER
SD	STORM DRAINAGE SYSTEM		BUILDING DRAIN TILE		
SF	SQUARE FEET				
SHR	SHOWER				
SHT	SHEET				
SS	SANITARY SEWER SYSTEM				
SV	STACK VENT				
TTFD	TELL-TALE FLOOR DRAIN				
UNO	UNLESS NOTED OTHERWISE				
V	VENT				
VFD	VARIABLE FREQUENCY DRIVE				
VS	VENT STACK				
VTR	VENT THRU ROOF				
WC	WATER CLOSET				
WCO	WALL CLEAN OUT				
WS	SANITARY WASTE STACK				

NOTE: NOT ALL SYMBOLS MAY APPEAR ON DRAWINGS.

F:\LIB\SCHEDULES\MECH\MSYMSCH.DWG 1/12/17

## GENERAL PLUMBING NOTES

1611

- CONTRACTORS SHALL FAMILIARIZE THEMSELVES WITH THE MECHANICAL AND PLUMBING DRAWINGS AND SPECIFICATIONS. NEITHER THE DRAWINGS NOR THE SPECIFICATIONS SHALL BE COMPLETE WITHOUT THE OTHER.
- DRAWINGS ARE DIAGRAMMATIC AND ARE INTENDED TO SHOW APPROXIMATE LOCATIONS ONLY. THE CONTRACTOR SHALL THOROUGHLY REVIEW ALL ARCHITECTURAL, STRUCTURAL, MECHANICAL, AND ELECTRICAL DRAWINGS AND SPECIFICATIONS.
- PLACEMENT OF EQUIPMENT AND DEVICES SHALL NOT INTERFERE WITH LOCATION NOR CLEARANCES OF OTHER TRADE'S MATERIALS OR EQUIPMENT.
- CONTRACTOR SHALL PROVIDE PIPE OFFSETS AND TRANSITIONS AS REQUIRED TO ACCOMMODATE STRUCTURE AND ARCHITECTURE.
- COORDINATE LOCATION AND ELEVATION OF ALL EXTERIOR WALL AND ROOF PENETRATIONS WITH ARCHITECT.
- PRIOR TO INSTALLING PLUMBING VENTS THRU ROOF, COORDINATE WITH ARCHITECT TO MEET APPEARANCE REQUIREMENTS.
- ALL BRANCH TAKE-OFFS SHALL HAVE ISOLATION SHUT-OFF VALVES.
- RESIDENTIAL UNDERCOUNTER DISHWASHER DISCHARGE LINE SHALL HAVE AIR-GAP DEVICE. INSTALL ON COUNTER-TOP. LOCATE TO THE REAR OF THE COUNTER-TOP AND COORDINATE WITH GENERAL CONTR. REFER TO SPEC SEC 22 10 00-2.6-J.
- PROVIDE A PLASTIC FLOOR DRAIN IN AREAS WHERE CONDENSATE DISCHARGES FROM HIGH EFFICIENCY EQUIPMENT, SUCH AS SEALED COMBUSTION WATER HEATERS.
- THIS CONTRACTOR TO PROVIDE COMBINATION HOT AND COLD FAUCETS THAT HAVE THREADED OUTLETS WITH INTERNAL CHECK VALVES OR IN-LINE CHECK VALVES INSTALLED UPSTREAM IN THE BRANCH LINES SERVING THIS TYPE OF FAUCET. THIS INCLUDES THE COMBINATION FAUCETS SUPPLIED BY FOOD SERVICE EQUIPMENT SUPPLIERS.
- ALL DOMESTIC HOT AND COLD WATER PEX PIPING SHALL MAINTAIN A 2" SPACING AND HAVE INDIVIDUAL FLOOR AND WALL PENETRATIONS.

## GENERAL HVAC NOTES

0216

- DRAWINGS ARE DIAGRAMMATIC AND ARE INTENDED TO SHOW APPROXIMATE LOCATIONS ONLY. THE CONTRACTOR SHALL THOROUGHLY REVIEW ALL ARCHITECTURAL, STRUCTURAL, PLUMBING, AND ELECTRICAL PLANS AND SPECIFICATIONS. PLACEMENT OF EQUIPMENT AND DEVICES SHALL NOT INTERFERE WITH LOCATIONS OR CLEARANCES OF OTHER TRADE'S MATERIALS OR EQUIPMENT.
- ALL SYSTEMS, MATERIAL AND INSTALLATION SHALL MEET STATE AND LOCAL CODES.
- CONTRACTOR SHALL PROVIDE PIPE AND DUCT OFFSETS AND TRANSITIONS AS REQUIRED TO ACCOMMODATE STRUCTURE AND ARCHITECTURE.
- RETURN GRILLES SHALL BE PROVIDED WITH LINED BOOT AND ELBOW FITTINGS.
- DUCT SIZES SHOWN ARE FREE AREA. INCREASE DUCT SIZE AS REQUIRED TO ACCOMMODATE INTERNAL INSULATION.
- PROVIDE 3/4" CONDENSATE RUNOUT FOR EACH FAN COIL SHOWN. PITCH PIPING 1/8" PER FOOT. SEE HVAC PLANS AND RISERS FOR ROUTING AND ADDITIONAL SIZING.
- COORDINATE SPACE SENSOR/THERMOSTAT LOCATIONS WITH OTHER TRADES AND ARCHITECT PRIOR TO ROUGH-IN AND INSTALLATION.
- TAKE-OFFS TO ALL SUPPLY DIFFUSERS AND GRILLES SHALL HAVE MANUAL BALANCING DAMPERS.
- DUCT RUNOUTS ARE EQUAL TO GRILLE AND DIFFUSER NECK SIZES SHOWN UNLESS INDICATED OTHERWISE.



**Blumentals  
Architecture**

1600 Marshall Street NE, Suite 1  
Minneapolis, MN 55413  
612/331-2222  
612/331-2224 FAX  
info@blumentals.com



763-585-6742  
763-585-6757 fax  
Email: steen@steeneng.com

5430 Douglas Drive North  
Crystal, MN 55429

I hereby certify that this plan, specification, or report was prepared by me or under my direct supervision and that I am a duly Licensed Engineer under the laws of the State of

MINNESOTA. 08/17/17  
sign date

Mark R. Day 24713  
MARK R. BRENGMAN reg. no.

06/30/18  
reg. exp. date

## PROJECT INFO

Project No.  
BLA201703  
Drawn By:  
JAF/MRB  
Issue Date  
8/17/17

SUBMITTALS / REVISIONS  
BID SET 8/17/17

SCALE

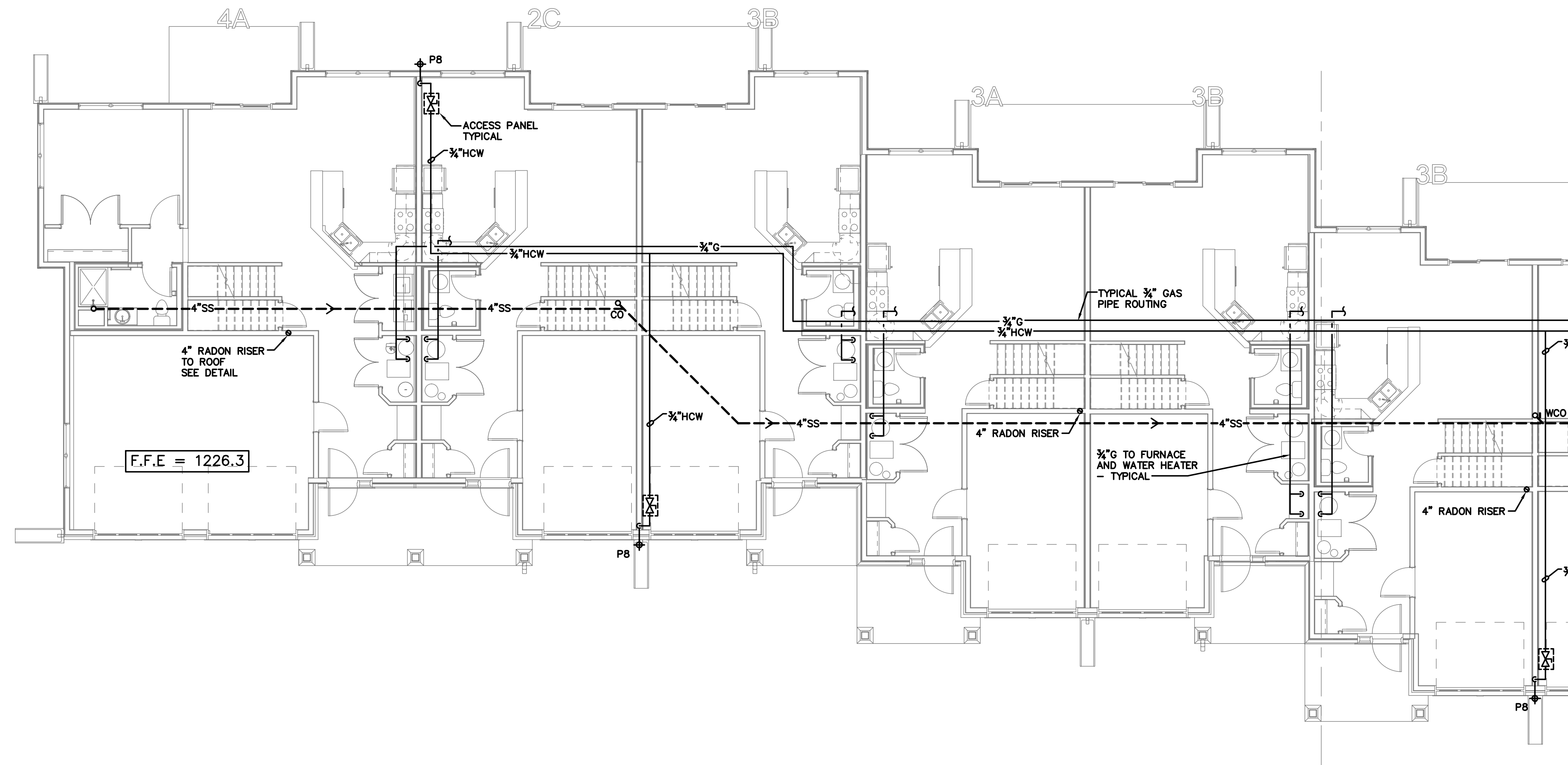
Fox Pointe Townhomes

Three Rivers Community Action,  
Austin, MN

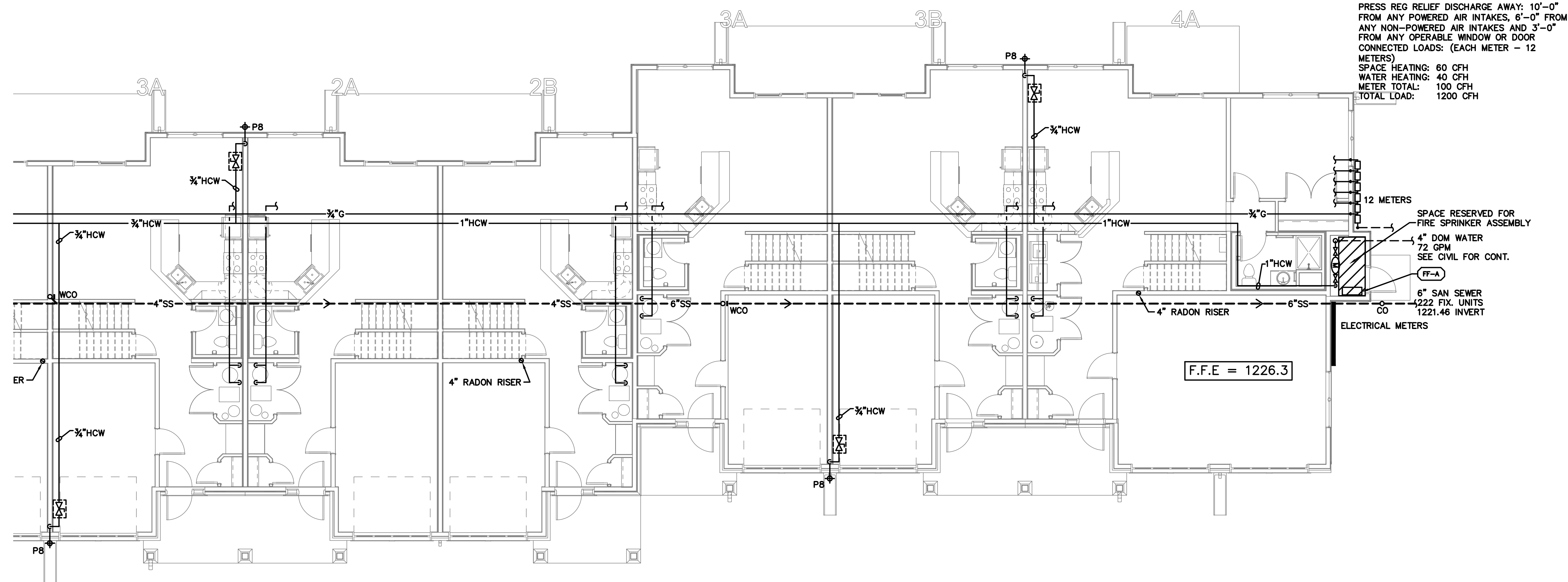
MECHANICAL COVERSHEET

**M001**





**1** PARTIAL BLDG B FIRST FLOOR  
PLUMBING PLAN  
1/4" = 1'-0"



**2** PARTIAL BLDG B FIRST FLOOR  
PLUMBING PLAN  
1/4" = 1'-0"

NATURAL GAS SERVICE AND METER BY UTILITY COMPANY. METER OUTLET PRESSURE: 2 PSI  
TOTAL DEVELOPED LENGTH FOR PIPE MAIN: XXX FT. DIRECT UTILITY COMPANY TO LOCATE  
PRESS REG RELIEF DISCHARGE AWAY: 10'-0" FROM ANY POWERED AIR INTAKES, 6'-0" FROM ANY NON-POWERED AIR INTAKES AND 3'-0" FROM ANY OPERABLE WINDOW OR DOOR  
CONNECTED LOADS: (EACH METER - 12 METERS)  
SPACE HEATING: 60 CFH  
WATER HEATING: 40 CFH  
METER TOTAL: 100 CFH  
TOTAL LOAD: 1200 CFH

12 METERS  
SPACE RESERVED FOR FIRE SPRINKLER ASSEMBLY  
4" DOM WATER 72 GPM SEE CIVIL FOR CONT.  
6" SAN SEWER 4222 FIX. UNITS 1221.46 INVERT  
ELECTRICAL METERS

PROJECT INFO

Project No. BLA201703  
Drawn By: JAF/MRB  
Issue Date: 8/17/17

SUBMITTALS / REVISIONS  
BID SET 8/17/17

SCALE

Fox Pointe Townhomes

Three Rivers Community Action, Austin, MN

BUILDING B FIRST FLOOR  
PLUMBING PLAN



**Blumentals  
Architecture**

1600 Marshall Street NE, Suite 1  
Minneapolis, MN 55413  
612/331-2222  
612/331-2224 FAX  
info@blumentals.com

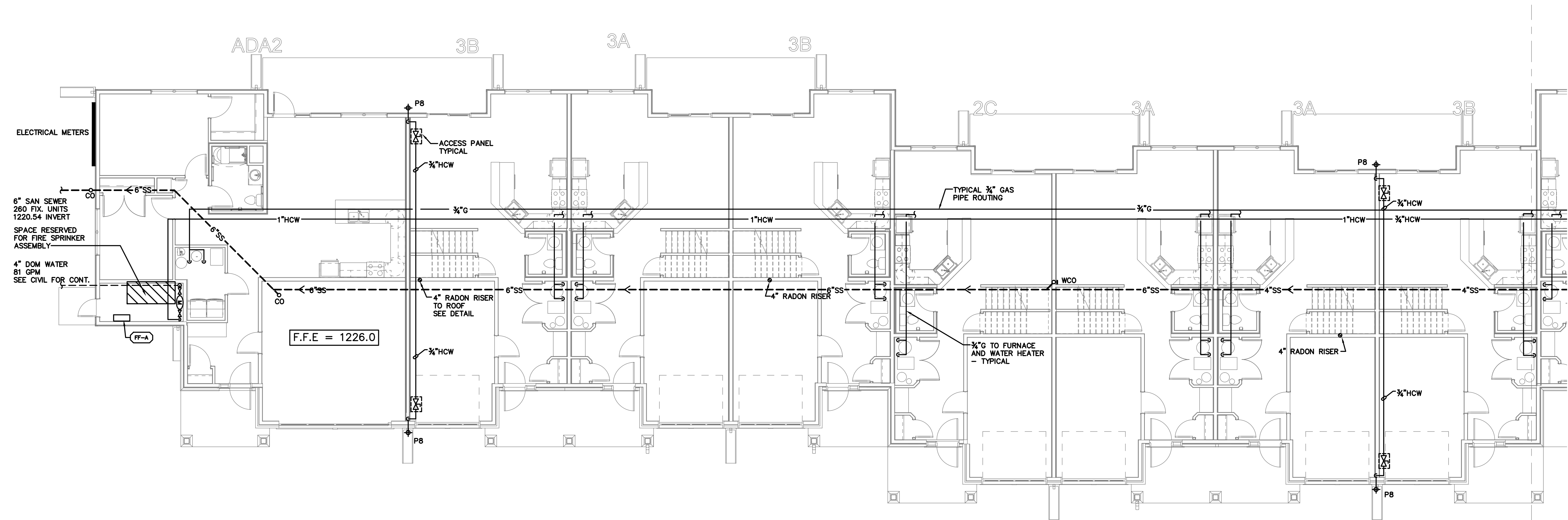


763-585-6742  
763-585-6757 fax  
Email: steen@steeneng.com  
5430 Douglas Drive North  
Crystal, MN 55429

I hereby certify that this plan, specification, or report was prepared by me or under my direct supervision and that I am a duly Licensed Engineer under the laws of the State of MINNESOTA.

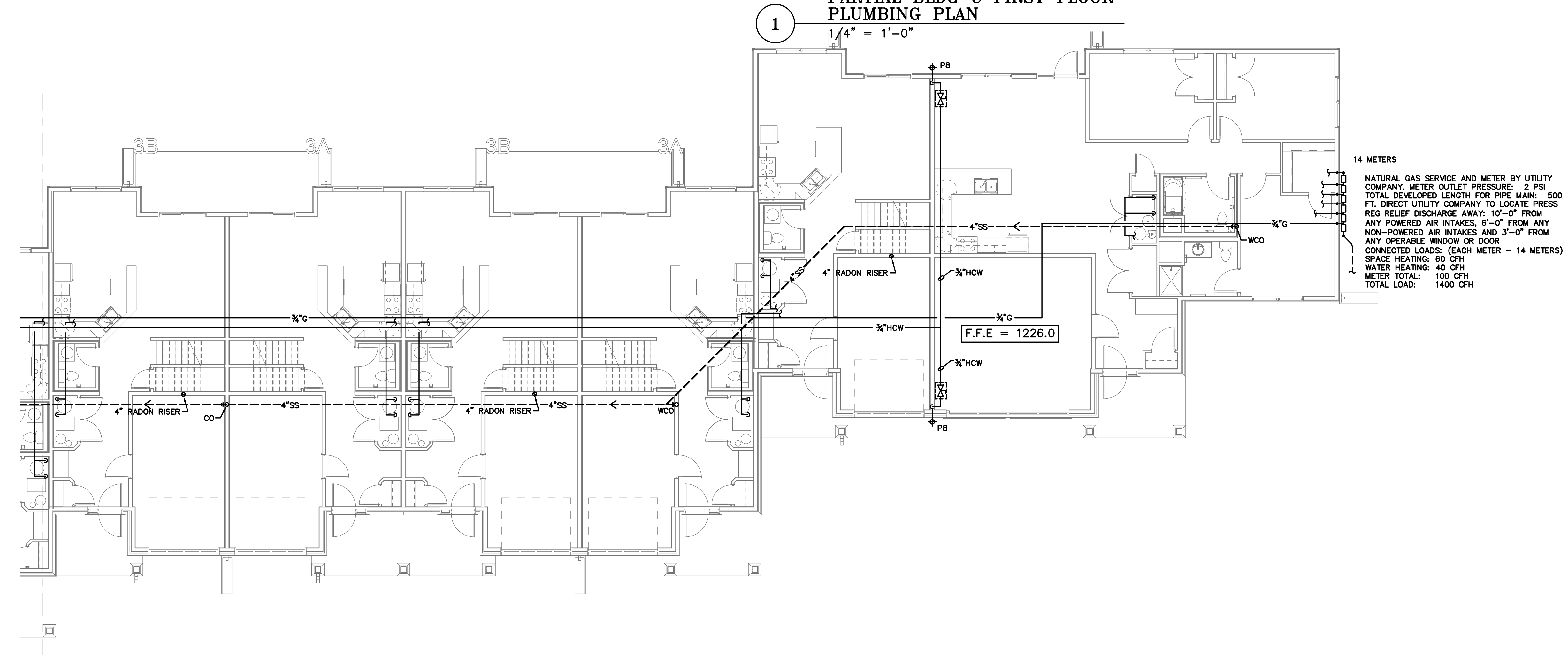
08/17/17 sign date  
24713 reg. no.  
*Mark R. Day*  
MARK R. BRENGMAN

06/30/18  
reg. exp. date



**PARTIAL BLDG C FIRST FLOOR  
PLUMBING PLAN**

1/4" = 1'-0"



**PARTIAL BLDG C FIRST FLOOR  
PLUMBING PLAN**

1/4" = 1'-0"

**PROJECT INFO**

Project No.  
BLA201703  
Drawn By:  
JAF/MRB  
Issue Date  
8/17/17

**SUBMITTALS / REVISIONS**

BID SET 8/17/17

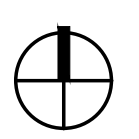
**SCALE**

Fox Pointe Townhomes

Three Rivers Community Action,  
Austin, MN

**BUILDING C FIRST FLOOR  
PLUMBING PLAN**

SEE GENERAL NOTES ON SHEET M001



**M131**







PROJECT INFO

Project No.  
BLA201703  
Drawn By:  
JAF/MRB  
Issue Date  
8/17/17

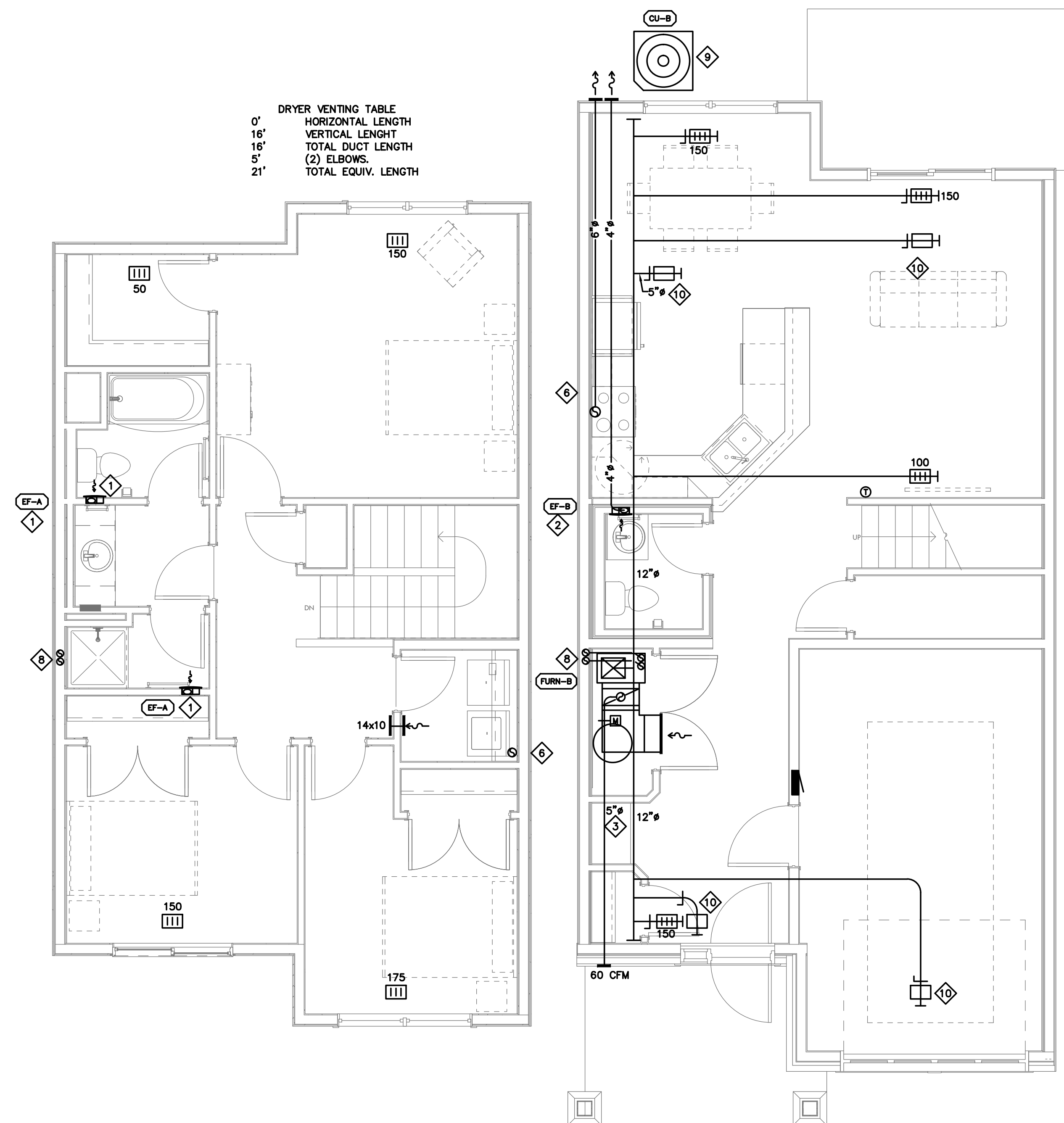
SUBMITTALS / REVISIONS  
BID SET 8/17/17

SCALE

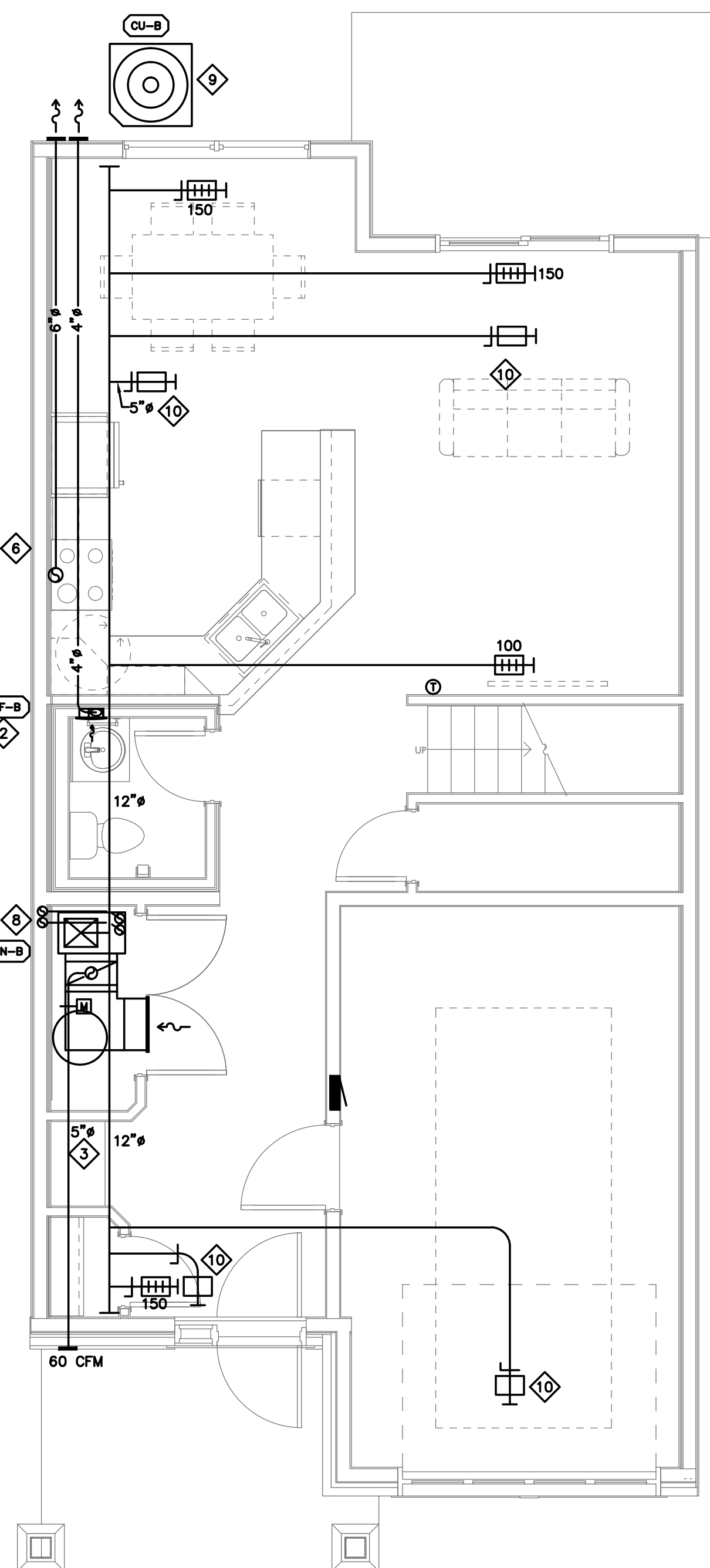
Fox Pointe Townhomes

Three Rivers Community Action,  
Austin, MN

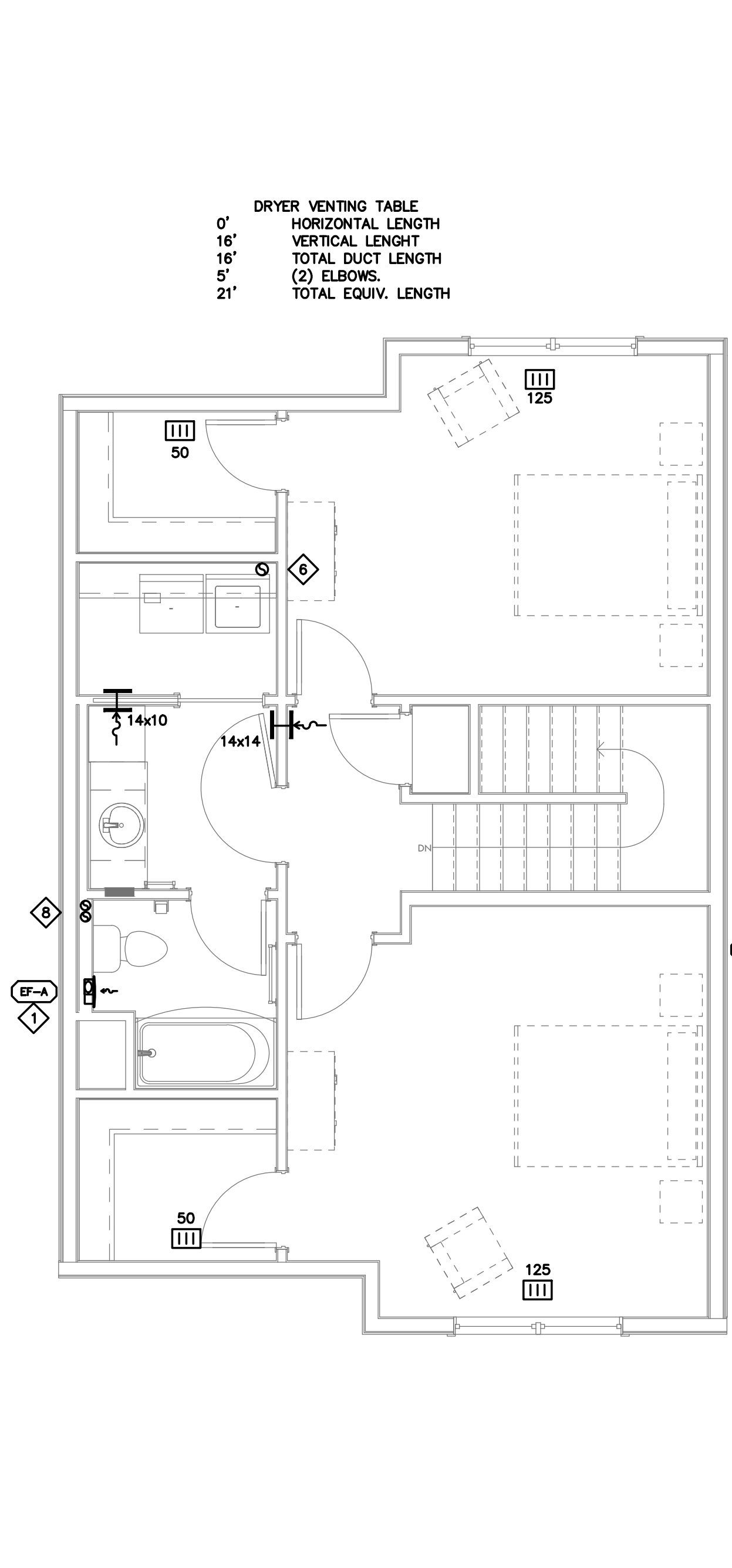
UNIT MECHANICAL PLANS



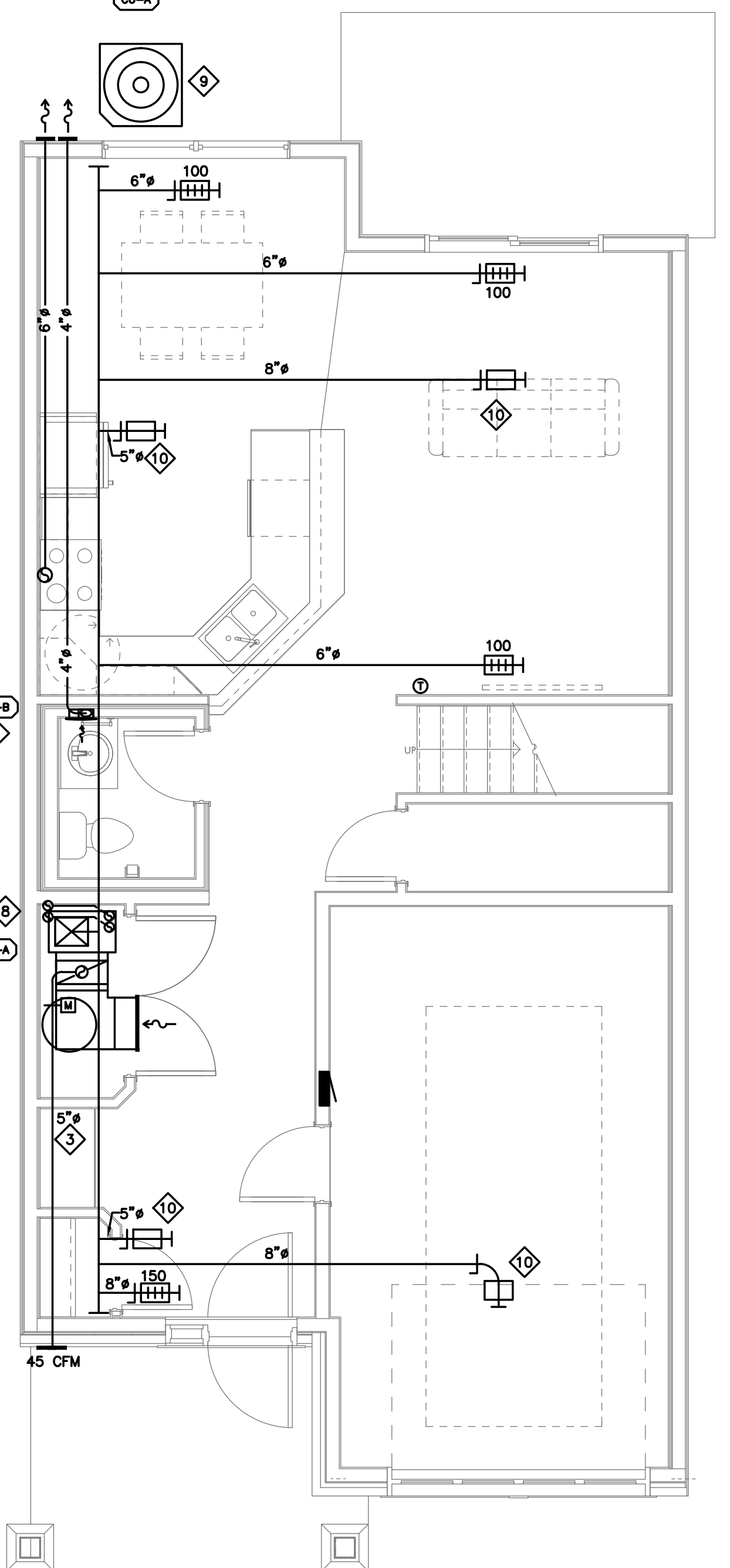
4 UNIT 3A SECOND FLOOR  
HVAC PLAN  
1/4" = 1'-0"



3 UNIT 3A FIRST FLOOR  
HVAC PLAN  
1/4" = 1'-0"



2 UNIT 2A SECOND FLOOR  
HVAC PLAN  
1/4" = 1'-0"



1 UNIT 2A FIRST FLOOR  
HVAC PLAN  
1/4" = 1'-0"

◇ SPECIFIC MECHANICAL NOTES

- 4" EXHAUST DUCT UP THROUGH ROOF.
- 4" EXHAUST DUCT TO WALL CAP.
- FRESH AIR DUCT SIZE AND BALANCE AS INDICATED ON PLANS. MAINTAIN MIN 10' FROM ANY EXHAUST OR FLUE VENT.
- 6" RANGE HOOD EXHAUST - DUCT UP THROUGH ROOF.
- 6" RANGE HOOD EXHAUST - DUCT TO SIDEWALL VENT CAP.
- 4" DRYER DUCT UP THROUGH ROOF TO ROOF CAP.
- 4" DRYER DUCT TO WALL CAP.
- FURNACE INTAKE AND FLUE VENT UP THROUGH ROOF. INSULATE PIPING IN COLD SPACE AS SPECIFIED.
- SEE ARCHITECTURAL SITE PLAN FOR EXACT LOCATION OF CONDENSING UNITS.
- UP TO FLOOR GRILLE FOR SECOND FLOOR.
- 4" FLUE AND INTAKE FOR UNIT HEATER.

GENERAL MECHANICAL UNIT PLAN NOTES

- GENERAL CONTRACTOR SHALL PROVIDE METAL STUDS FOR CONSTRUCTION OF SOFFITS, MECHANICAL CLOSETS AND WALL CAVITIES USED AS A RETURN PLENUM. COMBUSTIBLE CONSTRUCTION MATERIALS CANNOT BE EXPOSED WITHIN A PLENUM RETURN.
- PROVIDE WALL THERMOSTAT. COORDINATE EXACT LOCATION AND MOUNTING HEIGHT WITH OWNER AND ARCHITECT.
- DOORS SHALL BE UNDERCUT TO ALLOW RETURN AIR BACK TO FURNACE CLOSETS.
- SUPPLY REGISTER SCHEDULE: (TYPE E)  
0 - 150 CFM 8/6  
151 - 200 CFM 10/6  
201 - 250 CFM 12/6  
251 - 300 CFM 16/6
- RETURN GRILLE SCHEDULE: (TYPE U) (RETURN AT LOW SIDEWALL UNIT)  
400 CFM 16/16  
600 CFM 20/16  
800 CFM 24/20  
1000 CFM 24/24

PROJECT INFO

Project No.  
BLA201703  
Drawn By:  
JAF/MRB  
Issue Date  
8/17/17

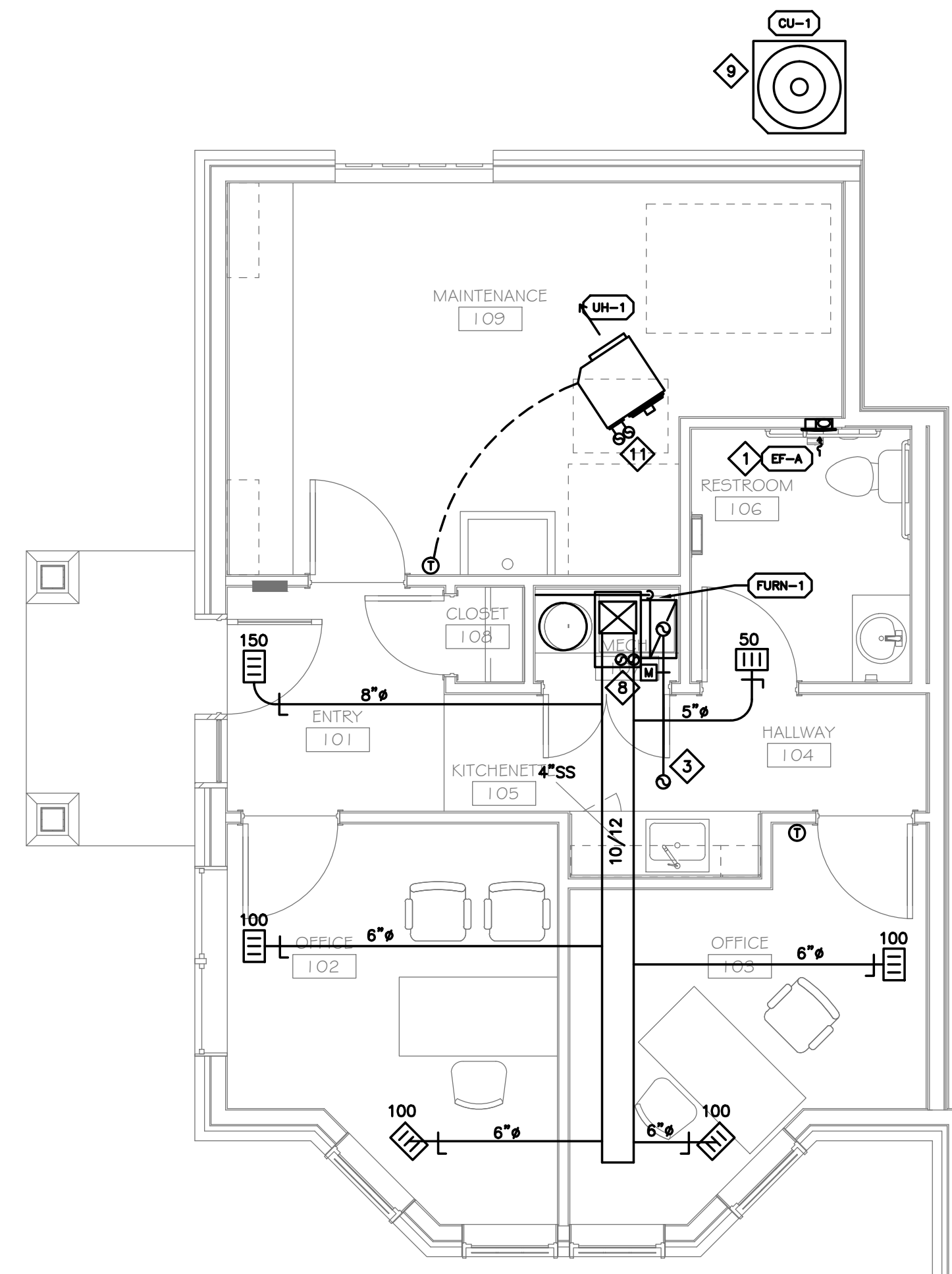
SUBMITTALS / REVISIONS  
BID SET 8/17/17

SCALE

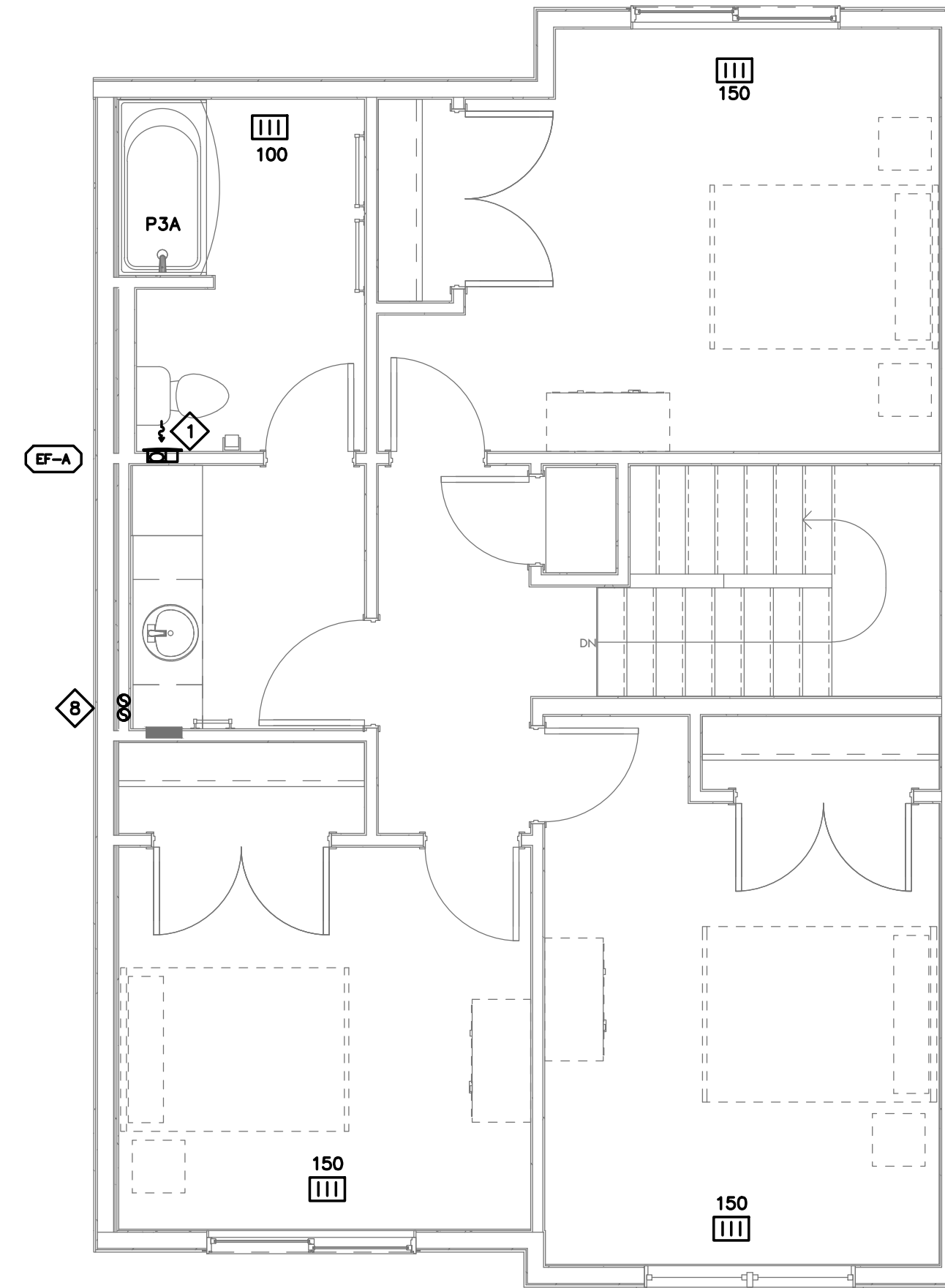
Fox Pointe Townhomes

Three Rivers Community Action,  
Austin, MN

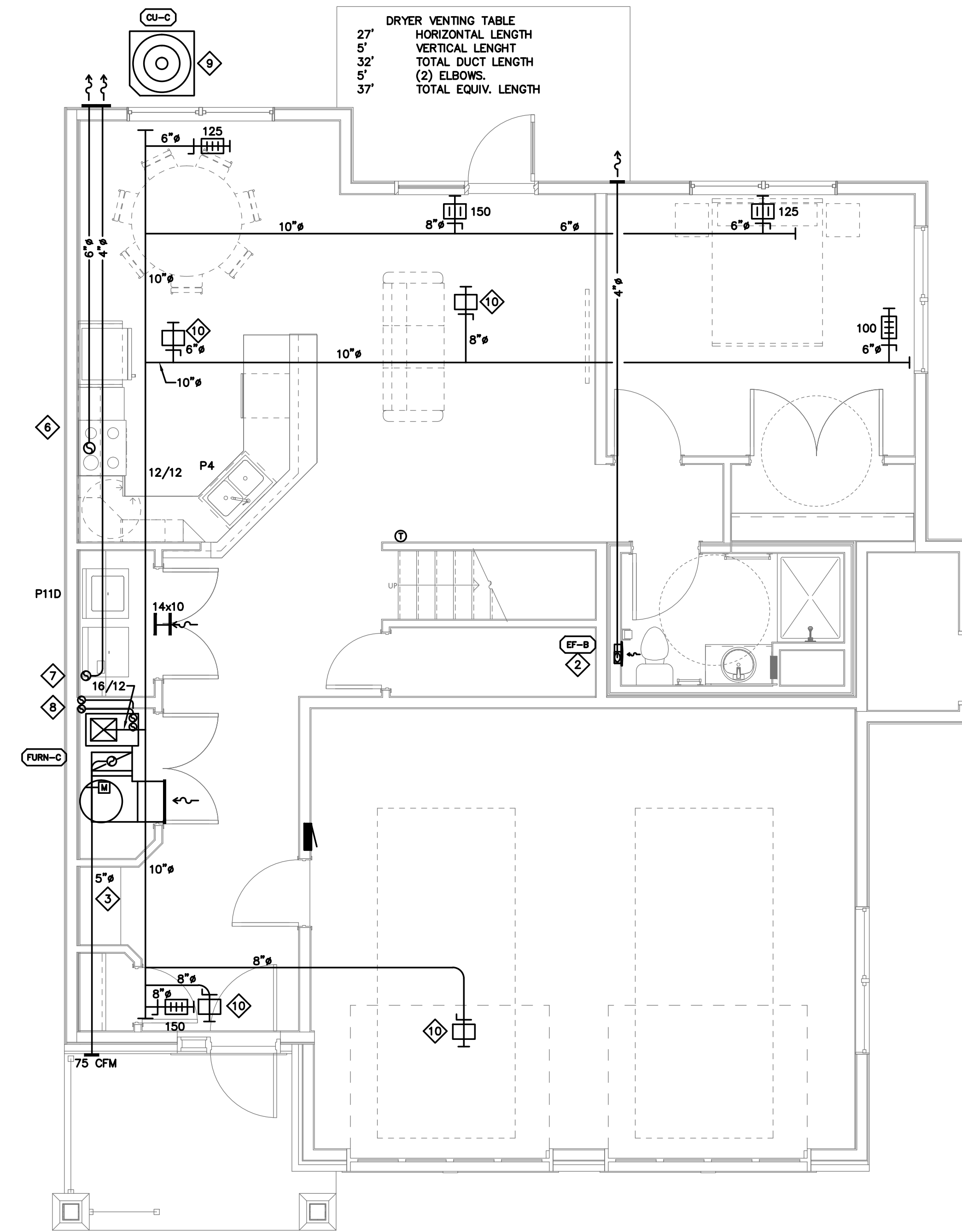
UNIT MECHANICAL PLANS



3 OFFICE  
HVAC PLAN  
1/4" = 1'-0"



1 UNIT 4A SECOND FLOOR  
HVAC PLAN  
1/4" = 1'-0"



1 UNIT 4A FIRST FLOOR  
HVAC PLAN  
1/4" = 1'-0"







**MECHANICAL AND ELECTRICAL EQUIPMENT SCHEDULE GENERAL NOTES**

- A. THE MECHANICAL CONTRACTOR SHALL PROVIDE ALL EQUIPMENT SCHEDULED.
- B. THE ELECTRICAL CONTRACTOR SHALL PROVIDE POWER WIRING AND MAKE FINAL CONNECTION TO EACH PIECE OF EQUIPMENT SCHEDULED.
- C. THE ELECTRICAL CONTRACTOR SHALL PROVIDE ALL STARTERS AND DISCONNECTS.
- D. THE MECHANICAL CONTRACTOR SHALL PROVIDE ALL CONTROL DEVICES AS WELL AS ALL 120/208/240 VOLT POWER REQUIREMENTS AND LOW VOLTAGE WIRING NECESSARY TO INSTALL AND MAKE FULLY OPERATIONAL SPECIFIED CONTROL SYSTEMS, UNLESS NOTED OTHERWISE.
- E. THE ELECTRICAL CONTRACTOR SHALL PROVIDE ALL SINGLE PHASE LINE VOLTAGE CONTROL DEVICES, SUCH AS 120/208/240 VOLT THERMOSTATS, SWITCHES AND TIME CLOCKS DIRECTLY CONTROLLING EXHAUST FANS, UNIT HEATERS, ETC., INCLUDING ALL ELECTRICAL MATERIALS AND FINAL CONNECTIONS.
- F. THE ELECTRICAL CONTRACTOR SHALL PROVIDE RECEPTACLES ADJACENT TO WATER HEATERS, SUMP PUMPS AND WATER SOFTENERS.

**WATER SOFTENER SCHEDULE**

UNIT NO.	MANUFACTURER & MODEL NO.	LOCATION	SERVES	MANIFOLD CONN. SIZE	PEAK FLOW 15 PSI P.D.	PEAK FLOW 25 PSI P.D.	EXIST WATER HARDNESS	DESIGN WATER HARDNESS	BACKWASH GPM	MOTOR DATA		PANEL				NOTES	
										KVA	V/PH	PANEL/CIRCUIT	CONDUIT	WIRE SIZE	BREAKER	MECH	ELEC
WS-1	MARLO CMP-30-KC	UNIT CLOSET	UNITS	1"	-	-	16	1	2.7	0.5	120 V	-	1/2"	#14	15/1	1	-

**MECHANICAL NOTES**

- 1. REFER TO PLUMBING SPECIFICATIONS SECTION 22 30 00 FOR FURTHER DETAILS.

**DOMESTIC WATER HEATER SCHEDULE (GAS COMBINATION INTERNAL HEAT SOURCE & STORAGE TANK)**

UNIT NO.	MANUFACTURER & MODEL NO.	LOCATION	SERVES	MAX. TEMP. RISE (deg. F)	GALLON STORAGE	RECOVERY (GPH)	CFH INPUT	MOTOR DATA		PANEL				NOTES	
								KVA	V/PH	PANEL/CIRCUIT	CONDUIT	WIRE SIZE	BREAKER	MECH	ELEC
WH-A	RHEEM PDV40	UNIT CLOSET	UNITS	90	40	40.4	40	0.5	120 V	-	1/2"	#14	15/1	1	1
WH-1	A.O. SMITH DEL-6S	OFFICE	OFFICE	80	6	10	-	1.5KW	120 V	-	1/2"	#12	20/1	1	1

**MECHANICAL NOTES**

- 1. REFER TO PLUMBING SPECIFICATIONS FOR FURTHER DETAILS.

**ELECTRICAL NOTES**

- 1. PROVIDE DEDICATED CIRCUIT AND DEDICATED NEUTRAL.

**ELECTRIC HEATER SCHEDULE**

UNIT NO.	MANUFACTURER & MODEL NO.	DESCRIP.	AREA SERVED	HEATING COIL DATA				PANEL				NOTES	
				LENGTH (ft.)	TOTAL WATTS	TOTAL (Btuh)	V/PH	PANEL/CIRCUIT	CONDUIT	WIRE SIZE	BREAKER	MECH	ELEC
FF-A	BERKO FRC-4020	COMMERCIAL WALL CABINET	SEE PLANS	-	2000	6,826	208/1	-	1/2"	#12	20/2	1,2	1,2

**MECHANICAL NOTES**

- 1. EQUIPMENT FURNISHED BY MECHANICAL CONTRACTOR, INSTALLED BY ELECTRICAL CONTRACTOR.
- 2. PROVIDE INTEGRAL THERMOSTAT AND DISCONNECT SWITCH.

**ELECTRICAL NOTES**

- 1. EQUIPMENT FURNISHED BY MECHANICAL CONTRACTOR, INSTALLED BY ELECTRICAL CONTRACTOR. COORDINATE LOCATIONS WITH MECHANICAL CONTRACTOR PRIOR TO ROUGH-IN.
- 2. REFER TO PLAN FOR CIRCUITING.

**UNIT HEATER SCHEDULE (GAS FIRED)**

UNIT NO.	MANUFACTURER & MODEL NO.	LOCATION	AREA SERVED	CFM	HEATING DATA		MOTOR DATA			PANEL				NOTES	
					MBH IN	MBH OUT	HP	RPM	V/PH	PANEL/CIRCUIT	CONDUIT	WIRE SIZE	BREAKER	MECH	ELEC
UH-1	REZNOR UDAS-4S	GARAGE	GARAGE	629	45	37.4	FRAC	1550	120/1	-	1/2"	#14	15/1	1	1

**MECHANICAL NOTES**

- 1. FURNISH REMOTE THERMOSTAT. BERKO #M602W OR EQUAL.

**ELECTRICAL NOTES**

- 1. INSTALL THERMOSTAT FURNISHED BY MECHANICAL. SEE MECHANICAL PLANS FOR LOCATION.

**EXHAUST FAN SCHEDULE**

UNIT NO.	MANUFACTURER & MODEL NO.	LOCATION	AREA SERVED	FAN DATA			MOTOR DATA			VIBR. ISOLATION		PANEL				NOTES		
				CFM	ESP (IN. WC)	FAN RPM	DRIVE TYPE	HP	RPM	V/PH	SPEC	DEFL. (in.)	PANEL/CIRCUIT	CONDUIT	WIRE SIZE	BREAKER	MECH	ELEC
EF-A	PANASONIC FV-0810VSS1	RESTROOMS	RESTROOMS	50	0.25	-	DIRECT	FRAC	-	120/1	-	-	-	1/2"	#12	20/1	-	2,3
EF-B	PANASONIC FV-0810VSS1	RESTROOMS	RESTROOMS	50	0.25	-	DIRECT	FRAC	-	120/1	-	-	-	1/2"	#12	20/1	-	1,3

**ELECTRICAL NOTES**

- 1. RUNS CONTINUOUSLY.
- 2. OBTAIN POWER FROM NEARBY NON-SWITCHED LIGHTING CIRCUIT.
- 3. OBTAIN POWER FROM ROOM SWITCHED LIGHTING CIRCUIT.

**FURNACE, AIR CONDITIONING COIL AND CONDENSING UNIT SCHEDULE**

UNIT NO.	MANUFACTURER & MODEL NO.	LOCATION	AREA SERVED	UNIT ARRANGEMENT	AIR HANDLING DATA				GAS FIRED HEATING		COOLING COIL DATA					COOLING DATA		MOTOR DATA				PANEL				NOTES		
					SUPPLY CFM	MIN. O.A.	ESP (IN. WC)	TSP (IN. WC)	SPEED	MBH IN	MBH OUT	EAT °F	LAT °F	CAPACITY MBH		SEER	TONS	MBH	HP	WATTS	MCA	V/PH	PANEL/CIRCUIT	CONDUIT	WIRE SIZE	BREAKER	MECH	ELEC
												DB	WB	DB	WB	SENS	TOTAL											
FURN-1	CARRIER 59TP6 040-10	MECH CLOSET	OFFICE	UPFLOW	600	SEE PLANS	0.3	-	MED	26/40	25-39	-	-	-	-	-	-	-	1/2	-	10.3	120/1	-	1/2"	#12	20/1	1	-
CU-1	CARRIER 24ACB4 18-30	GRADE	FURN-1	-	-	-	-	-	-	-	-	-	-	-	15.5	1.5	18	-	-	11.7	208/1	-	1/2"	#12	20/2	-	-	
FURN-A	CARRIER 59TP6A 060-14	MECH CLOSET	UNITS	UPFLOW	800	SEE PLANS	0.30	-	MED	39/60	38/58	-	-	-	-	-	-	3/4	-	14.3	-	-	1/2"	#12	20/1	1	-	
CU-A	CARRIER 24ACB4 24-30	GRADE	FURN-A	-	-	-	-	-	-	-	-	-	-	-	16.0	2.0	24	-	-	17.3	208/1	-	3/4"	#10	30/2	-	-	
FURN-B	CARRIER 59TP6A 060-14	MECH CLOSET	UNITS	UPFLOW	1000	SEE PLANS	0.30	-	MED	39/60	38/58	-	-	-	-	-	-	3/4	-	14.3	-	-	1/2"	#12	20/1	1	-	
CU-B	CARRIER 24ACB4 30-30	GRADE	FURN-B	-	-	-	-	-	-	-	-	-	-	-	16.0	2.5	30	-	-	18.1	208/1	-	3/4"	#10	30/2	-	-	
FURN-C	CARRIER 59TP6A 060-14	MECH CLOSET	UNITS	UPFLOW	1200	SEE PLANS	0.30	-	MED	39/60	38/58	-	-	-	-	-	-	3/4	-	14.3	-	-	1/2"	#12	20/1	1	-	
CU-C	CARRIER 24ACB4 36-30	GRADE	FURN-C	-	-	-	-	-	-	-	-	-	-	-	16.0	3.0	36	-	-	22.0	208/1	-	3/4"	#10	30/2	-	-	

**MECHANICAL NOTES**

- 1. PROVIDE MOTORIZED DAMPER ON FRESH AIR INTAKE.

**RETURN/EXHAUST GRILLES**

SIZE	CFM	MAKE	MODEL
8X8	150	TITUS	350
10X10	240	TITUS	350
12X12	420	TITUS	350
14X14	680	TITUS	350
16X16	810	TITUS	350
18X18	1040	TITUS	350
24X6	0-400	TITUS	50F
24X12	401-800	TITUS	50F
24X24	776-1600	TITUS	50F

**SUPPLY REGISTERS**

SIZE	CFM	MAKE	MODEL
8X6	150	TITUS	300R
10X6	200	TITUS	300R
12X6	250	TITUS	300R
16X6	300	TITUS	300R
18X10	500	TITUS	300R
24X10	600	TITUS	300R



1600 Marshall Street NE, Suite 1  
 Minneapolis, MN 55413  
 612/331-2222  
 612/331-2224 FAX  
 info@blumentals.com



763-585-6742  
 763-585-6757 fax  
 Email: steen@steeneng.com  
 5430 Douglas Drive North  
 Crystal, MN 55429

I hereby certify that this plan, specification, or report was prepared by me or under my direct supervision and that I am a duly Licensed Engineer under the laws of the State of MINNESOTA.

08/17/17  
 sign date  
 24713  
 reg. no.

06/30/18  
 reg. exp. date

**PROJECT INFO**

Project No.  
 BLA201703  
 Drawn By:  
 JAF/MRB  
 Issue Date  
 8/17/17

**SUBMITTALS / REVISIONS**  
 BID SET 8/17/17

SCALE

Fox Pointe Townhomes

Three Rivers Community Action,  
 Austin, MN

MECHANICAL SCHEDULES

M401