



1600 Marshall St NE, Suite 1
Minneapolis, MN 55413
www.blumentals.com

(p) (612) 331-2222
(f) (612) 331-2224
info@blumentals.com

Jim Moy, AIA
Principal/President & CEO

Andy Swartz, AIA
Principal/Vice President

Janis Blumentals, AIA
Principal/Founder

Addendum #03

Project Name / Address:

Fox Pointe Townhomes
800-927 23rd Ave NW
Austin, MN 55912

Date:

9/5/17

Page:

1 of 2

Project Number:

615-19

The following modifications to, additions to and notice of deletions shall be appended to and become part of the Contract Documents for this project. Where any part of the contract documents is modified, added to, or voided by this addendum, the unmodified and unvoided parts of the Contract Documents shall remain in effect. References made to specifications and drawings shall be used as a general guide only. Bidders and Contractors shall determine for themselves the Work impacted by items included in this Bid Addendum.

A. Project Manual

1. Refer to Section 06 61 50 – CAST MARBLE FABRICATIONS
 - a. Delete subsection 2.03 TUB AND SHOWER SURROUNDS

B. Drawings

1. Refer to A902 – WALL TYPES
 - a. Modified this addendum to clarify insulation at Wall Types “B” & “C”.

End of Addendum

License # 54462

A handwritten signature in black ink that reads 'Nate Bartley'.

Dated 9/5/17



**Blumentals
Architecture**

1600 Marshall Street NE, Suite 1
Minneapolis, MN 55413
612/331-2222
612/331-2224 FAX
info@blumentals.com

I hereby certify that this plan, specification, or report was prepared by me or under my direct supervision and that I am a duly Licensed Architect under the laws of the State of
MINNESOTA 08/17/17
sign date
NATHANIEL R. BARTLEY 54462
reg. no.

Nathaniel Bartley 6/30/2018
reg. exp. date

PROJECT INFO

Commission No.
B/A: 615-19
Drawn By:
SB
Issue Date
08/17/17

SUBMITTALS / REVISIONS

7.28.17 90% REVIEW
8.10.17 100% REVIEW
8.17.17 BID SET
3 9.05.17 ADDENDUM #3

SCALE
1" = 1'-0"

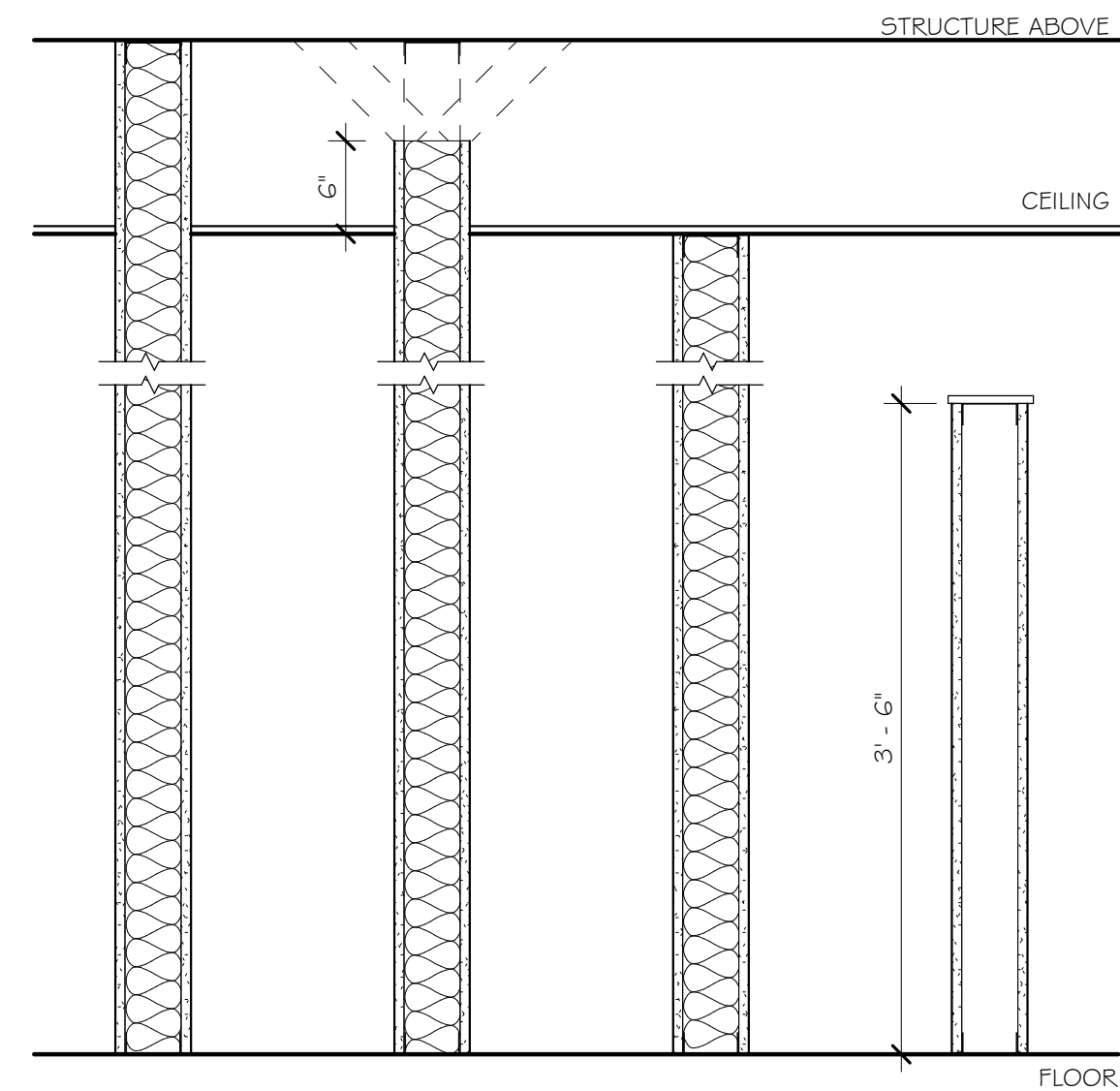
Fox Pointe Townhomes

Three Rivers Community Action,
Austin, MN

WALL TYPES

A902

WALL TERMINATION TYPES



- D** SUBSCRIPT
EXTEND PARTITION TO STRUCTURE ABOVE
- A** SUBSCRIPT
EXTEND ENTIRE PARTITION TO 6" ABOVE FINISHED CEILING; EXTEND STUDS OR DIAGONAL BRACE TO STRUCTURE ABOVE
- C** SUBSCRIPT
EXTEND PARTITION TO CEILING
- DIMENSION SUBSCRIPT**
REFER TO DIMENSION FOR PARTITION HEIGHT

WALL FIRE RATING TYPES

- R** SUBSCRIPT
SMOKE RESISTIVE CONSTRUCTION
- 1** SUBSCRIPT
1 HOUR FIRE RATING; SEE WALL TYPE NOTES
- 2** SUBSCRIPT
2 HOUR FIRE RATING; SEE WALL TYPE NOTES
- 3** SUBSCRIPT
3 HOUR FIRE RATING; SEE WALL TYPE NOTES

WALL ACOUSTICAL TYPES

- S** SUPERScript
FILL STUD CAVITY WITH ACOUSTICAL INSULATION

WALL TYPE NOTES

1. PARTITION TYPE SHALL BE (A4) UNLESS NOTED OTHERWISE
2. AT ALL WALL TYPES, PROVIDE MOLD RESISTANT PAPER-FACED GYPSUM BOARD AT ALL WET WALL LOCATIONS
3. PROVIDE 5/8" TYPE "X" FIRE RATED GYP BD AT ALL FIRE RATED WALLS UNLESS NOTED OTHERWISE
4. PROVIDE ABUSE-RESISTANT GYP BD TO 4' O' A.F.F. AT COMMON AREAS AND HALLWAYS UNLESS NOTED OTHERWISE
5. PROVIDE FIRE SEALING AT ALL OPENINGS & PENETRATIONS THAT ARE FIRE RATED WALLS TO MEET THE REQUIRED FIRE RATINGS
6. DIMENSIONS TO FINISH FACE OF GYPSUM BOARD UNLESS NOTED OTHERWISE
7. PROVIDE SOLID BLOCKING WITHIN PARTITIONS AT ALL WALL HUNG OR SUPPORTED EQUIPMENT
8. ELEMENTS OF ACOUSTIC RATED PARTITIONS SHALL EXTEND TO FLOOR OR ROOF DECK; ALL JOINTS AND PENETRATIONS SHALL BE FILLED AND SEALED TO MAINTAIN THE ACOUSTIC RATING
9. SEE STRUCTURAL FOR ADDITIONAL REQUIREMENTS.

CEILING TYPES

| CEILING TYPE - ROOF TRUSS CONDITION | | CEILING TYPE - FLOOR TRUSS | | CEILING TYPE - STORM SHELTER | |
|-------------------------------------|---|----------------------------|------------------------------------|------------------------------|------------------------------------|
| | DESCRIPTION | | DESCRIPTION | | DESCRIPTION |
| | FIRE RATING / UL CODE NOTES | | FIRE RATING / UL CODE NOTES | | FIRE RATING / UL CODE NOTES |
| | GA FILE NO. RC 2602 FIRE RATING 1 HR | | CEILING IS NOT FIRE RATED. | | CEILING IS NOT FIRE RATED. |

WALL TYPES

| WALL TYPE 'A' - GYP BD PARTITIONS | | | | | | WALL TYPE 'B' - INTERIOR PARTITIONS | | | | | | WALL TYPE 'C' - PARTY WALL | | | | | | WALL TYPE - STORM SHELTER | | | | | |
|---|------------|----------------|------------|-----------------------------|--|-------------------------------------|------------|----------------|------------|-----------------------------|--|----------------------------|------------|----------------|------------|---|--|---------------------------|------------|----------------|------------|-----------------------------|--|
| | | | | | | | | | | | | | | | | | | | | | | | |
| NOTE: AT ALL WALL TYPES, PROVIDE MOLD RESISTANT PAPER-FACED GYPSUM BOARD AT ALL WET LOCATIONS. | | | | | | | | | | | | | | | | | | | | | | | |
| SUB TYPE | STUD WIDTH | ASSEMBLY WIDTH | STC RATING | FIRE RATING / UL CODE NOTES | | SUB TYPE | STUD WIDTH | ASSEMBLY WIDTH | STC RATING | FIRE RATING / UL CODE NOTES | | SUB TYPE | STUD WIDTH | ASSEMBLY WIDTH | STC RATING | FIRE RATING / UL CODE NOTES | | SUB TYPE | STUD WIDTH | ASSEMBLY WIDTH | STC RATING | FIRE RATING / UL CODE NOTES | |
| (A4) _D | 3 1/2" | 4 3/4" | | | | (B6) _D | 5 1/2" | 6 3/4" | | | | (C6) _D | 5 1/2" | 8 1/2" | 61 | UL DESIGN: U301 FIRE RATING 2 HR STC RATING 61 | | (D4) _C | 3 1/2" | 6 1/4" | | | |

| WALL TYPE - STORM SHELTER | | | | | | WALL TYPE 'F' - WALL FURRING | | | | | | WALL TYPE 'G' - EXTERIOR BRICK | | | | | | WALL TYPE 'H' - EXTERIOR SIDING | | | | | |
|---------------------------|------------|----------------|------------|-----------------------------|--|------------------------------|------------|----------------|------------|-----------------------------|--|--------------------------------|------------|----------------|------------|-----------------------------|--|---------------------------------|------------|----------------|------------|-----------------------------|--|
| | | | | | | | | | | | | | | | | | | | | | | | |
| SUB TYPE | STUD WIDTH | ASSEMBLY WIDTH | STC RATING | FIRE RATING / UL CODE NOTES | | SUB TYPE | STUD WIDTH | ASSEMBLY WIDTH | STC RATING | FIRE RATING / UL CODE NOTES | | SUB TYPE | STUD WIDTH | ASSEMBLY WIDTH | STC RATING | FIRE RATING / UL CODE NOTES | | SUB TYPE | STUD WIDTH | ASSEMBLY WIDTH | STC RATING | FIRE RATING / UL CODE NOTES | |
| (E4) _C | 3 1/2" | 5 5/8" | | | | (F4) _D | 3 1/2" | 4 1/8" | | | | (G6) _C | 5 1/2" | 12 5/8" | | | | (H6) _C | 5 1/2" | 7 1/2" | | | |