

SITE NOTES

1. THE CONTRACTOR SHALL PROVIDE ALL LABOR, MATERIALS AND EQUIPMENT NECESSARY FOR A COMPLETE AND FUNCTIONAL ELECTRICAL SYSTEM.
2. MATERIALS AND INSTALLATION SHALL COMPLY WITH CODES, UTILITY REQUIREMENTS, LAWS AND ORDINANCES OF FEDERAL, STATE, OSHA AND LOCAL GOVERNING BODIES HAVING JURISDICTION.
3. THE CONTRACTOR SHALL COMPLY WITH ALL CODES AND STANDARDS APPLICABLE TO THIS PROJECT THAT ARE LISTED BUT NOT LIMITED TO: NEC, NFPA, NEMA, AND, ETC. SEE: NFPA LIFE SAFETY 101, ASHRAE 90.1, IECC ENERGY CODE AND IBC BUILDING CODE.
4. PRIOR TO ANY DIGGING, TRENCHING, ETC. CONTACT ALL LOCAL UTILITY COMPANIES AND MUNICIPALITIES AND CONFIRM EXACT LOCATIONS OF ALL EXISTING UTILITIES.
5. MATERIALS AND EQUIPMENT SHALL BE LISTED AND/OR LABELED BY UL OR ANOTHER NATIONALLY RECOGNIZED TESTING LABORATORY.
6. ALL MATERIAL, EQUIPMENT, WIRING DEVICES, ETC SHALL BE NEW, UNLESS SPECIFICALLY NOTED AS EXISTING TO BE REUSED.
7. ALL MATERIALS AND EQUIPMENT SHALL BE STORED, HANDLED, ERECTED, INSTALLED, CONNECTED, CLEANED, ADJUSTED, TESTED, CONDITIONED AND PLACED IN SERVICE IN ACCORDANCE WITH THE MANUFACTURERS DIRECTIONS AND RECOMMENDATIONS.
8. COORDINATE THE UTILITY COMPANY SERVICE FEEDS AND INSTALLATION.
9. ALL POLE FIXTURES TO BE LOCATED 4' AWAY FROM EDGE OF CURB.
10. ALL EXTERIOR LIGHT FIXTURES TO BE CONNECTED TO A COMMON EQUIPMENT GROUND. USE #6, TYPE THWN.
11. ALL CIRCUIT TO BE PLACED IN 1" CONDUITS UNLESS OTHERWISE NOTED. CIRCUIT TO USE COPPER WIRE, TYPE THWN.
12. THE CONTROLLING LIGHTING CONTACTORS SHALL BE MOUNTED INSIDE THE BUILDING WITH TIME-CLOCK CONTROL & REMOTE PHOTOCELLS LOCATED ON THE EXTERIOR SIDE OF THE BUILDING WALL. INSTALL PHOTOCELLS AT LOCATIONS WHERE BUILDING OR OTHER OBSTRUCTIONS WILL NOT INTERFERE WITH THEIR PROPER OPERATION. FINAL BRANCH CIRCUIT SUPPLY CONNECTIONS WILL BE PROVIDED BY THE BUILDING ELECTRICAL CONTRACTORS.
13. MIN. BURIAL DEPTH FOR THE LIGHTING CIRCUIT SHALL BE 24". A SLIGHT DECREASE IN DEPTH IS ALLOWED WITHIN 10' OF THE POLES.
14. VERIFY CONSTRUCTION AREAS ON OTHER SITE PLANS FOR POTENTIAL OBSTACLES AND CONSTRUCTION LIMITS.

ELECTRIC GENERAL NOTES

1. ALL WORK SHALL BE COMPLETED IN ACCORDANCE WITH NATIONAL, STATE AND LOCAL ELECTRICAL CODES.
2. ENERGY CODE WILL BE IN ACCORDANCE WITH ASHRAE 90.1 2010.
3. COORDINATE WORK WITH ALL OTHER TRADES.
4. EQUIPMENT SHALL BE INSTALLED IN ACCORDANCE WITH MANUFACTURER'S RECOMMENDATIONS.
5. ALL WIRING SHALL BE INSTALLED IN APPROVED RACEWAYS.
6. ALL EQUIPMENT GROUNDING CONDUCTORS SHALL BE INSTALLED AT ALL LOCATIONS.
7. ALL MEASUREMENTS TO TOP OF BOX. RECEPTACLES SHALL BE 20" A.F.F. SWITCHES SHALL BE 48" A.F.F.
8. GFI PROTECT ALL RECEPTACLES WITHIN 6' OF EVERY SINK.

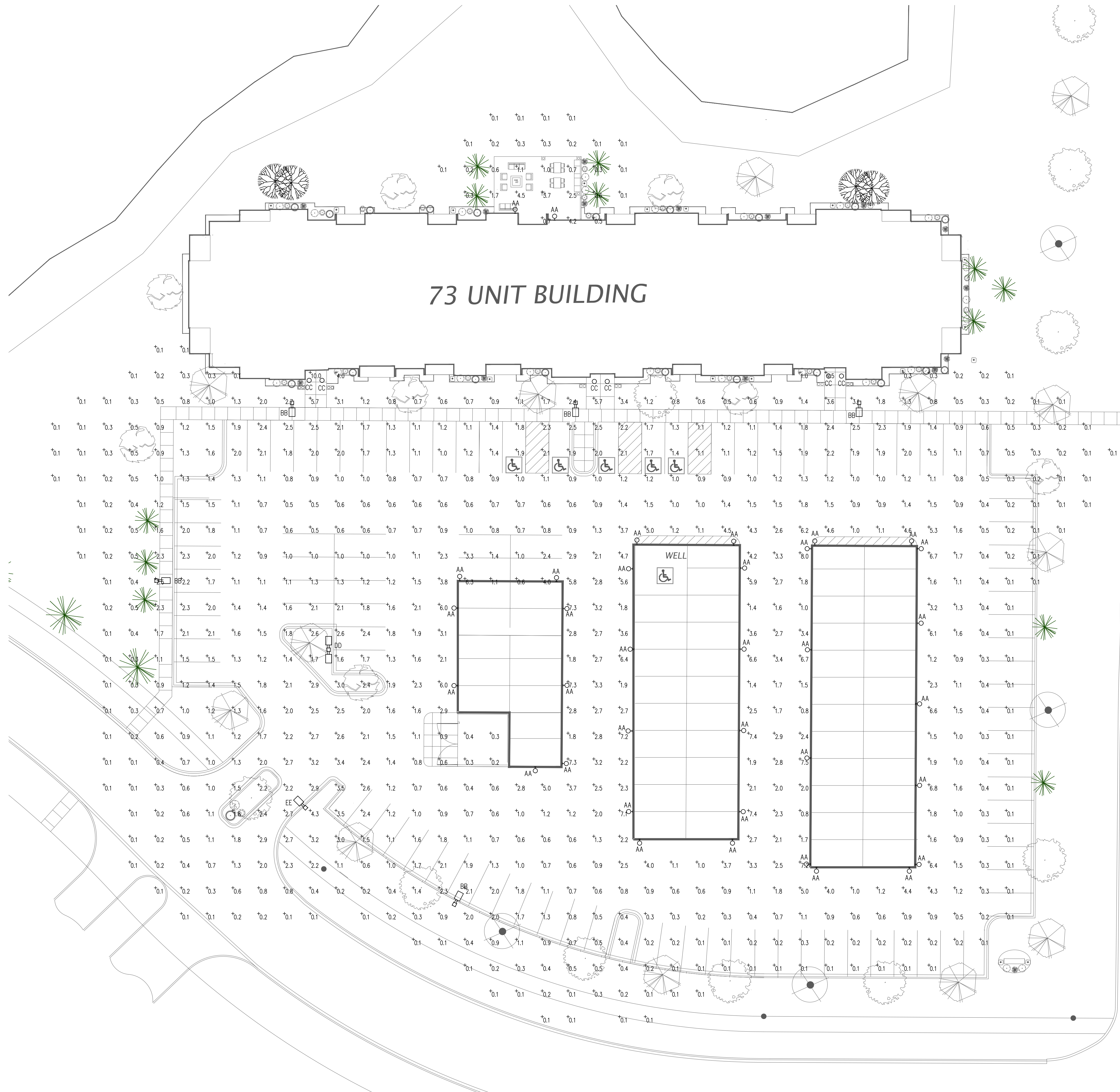
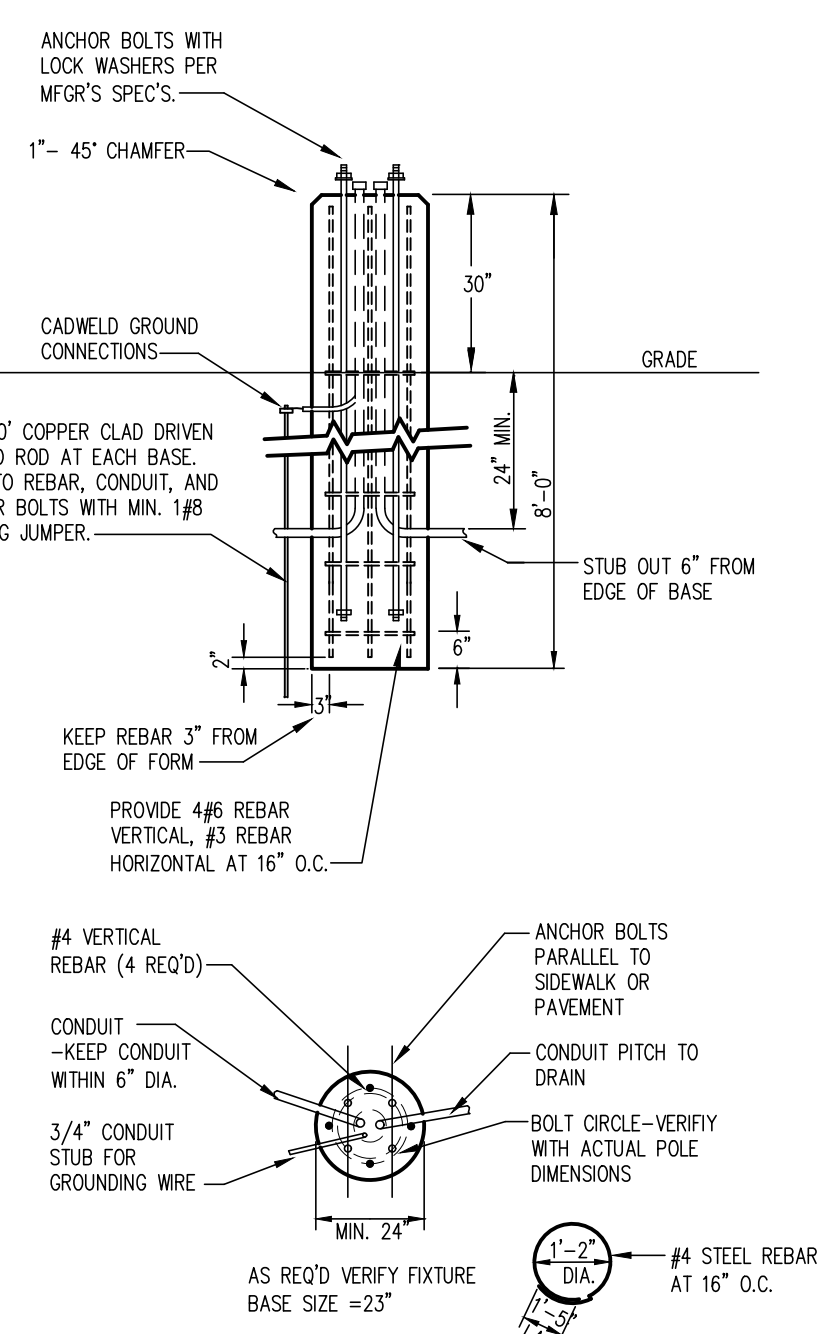
LIGHTING FIXTURE SCHEDULE

TYPE	LAMPS	WATTAGE	DESCRIPTION	NOTES
AA	LED	18	SMALL WALL PACK	--
BB	LED	78	POLE FIXTURE, TYPE II OPTICS, 20' POLE	--
CC	LED	18	EXTERIOR RECESSED DOWNLIGHT	--
DD	LED	(2) 78	DUAL HEAD POLE FIXTURE, TYPE III OPTICS, 20' POLE	--
EE	LED	78	DECORATIVE SINGLE HEAD POLE FIXTURE, TYPE IV OPTICS, 15' POLE	--

NOTES:

LIGHTING LEGEND

- ☐ RECESSED 2x4 FLUORESCENT FIXTURE
- ☐ RECESSED 2x2 FLUORESCENT FIXTURE
- ☐ INDICATES NIGHTLIGHT FIXTURE
- ☐ INDICATES EMERGENCY FIXTURE
- ☐ INDICATES EMERGENCY/NIGHTLIGHT FIXTURE
- ☐ SURFACE MOUNT 1x4 FLUORESCENT FIXTURE
- ☐ HIGH BAY 2x4 FLUORESCENT FIXTURE
- ☐ SURFACE WALL MOUNTED FLUORESCENT FIXTURE
- ☐ SURFACE CEILING MOUNTED FLUORESCENT FIXTURE
- RECESSED DOWNLIGHT
- SURFACE WALL MOUNTED FIXTURE
- SURFACE MOUNTED FIXTURE
- SURFACE MOUNTED PENDANT FIXTURE
- OUTSIDE POLE-MOUNT LIGHT FIXTURE
- EXTERIOR GROUND MOUNTED LIGHT FIXTURE
- EMERGENCY LIGHTING FIXTURE
- LED EXIT SIGN-SHADED AREA INDICATES ILLUMINATED FACE
- LED EXIT/EMERGENCY SIGN-SHADED AREA INDICATES ILLUMINATED FACE
- EXTERIOR EMERGENCY EGRESS LIGHT
- ⌘ SINGLE POLE SWITCH
- ⌘ 2-POLE SWITCH
- ⌘ 3-WAY SWITCH
- ⌘ 4-WAY SWITCH
- ⌘ SWITCH W/PILOT LIGHT
- ⌘ WALL MOUNTED SINGLE LEVEL OCCUPANCY SENSOR
- ⌘ WALL MOUNTED DUAL LEVEL OCCUPANCY SENSOR
- ⌘ CEILING MOUNTED OCCUPANCY SENSOR
- NL INDICATES FIXTURE TO REMAIN ON FOR SECURITY PURPOSES
- A,B INDICATES LIGHT FIXTURE SWITCH-LEGS
- P-X INDICATES PANEL AND CIRCUIT NUMBER
- Ⓛ INDICATES LIGHT FIXTURE TYPE
- EX INDICATES EXISTING FIXTURE
- RL INDICATES RELOCATED FIXTURE
- TC INDICATES FIXTURE CONTROLLED BY TIMECLOCK
- EM INDICATES EMERGENCY FIXTURE



ELECTRICAL SITE PLAN
SCALE: 1" = 20'-0"
0 10' 20' 40'

PROJECT: PROPOSED PROJECT FOR: **TIMBER RIDGE APARTMENTS**
FOREST LAKE, MN

SHEET NO. **E1.1**

A.C/a Auth Consulting/associates

COMPANY OFFICE: 408 Technology Drive E., Minnetonka, WI 54701
Tel: 715-232-8400 Fax: 715-232-8492

BRANDE OFFICE: 3200 Lake Street, Hudson, WI 54016
Tel: 715-381-5277

DATE: 12/29/17
DRAWN BY: DUK
CHECKED BY: TJA
DWG FILE: 56301
REF FILE: 56301
JOB NUMBER: 508-162-17

REVISION DESCRIPTION: NAME: DATE: