

**PLUMBING REFERENCE NOTES**

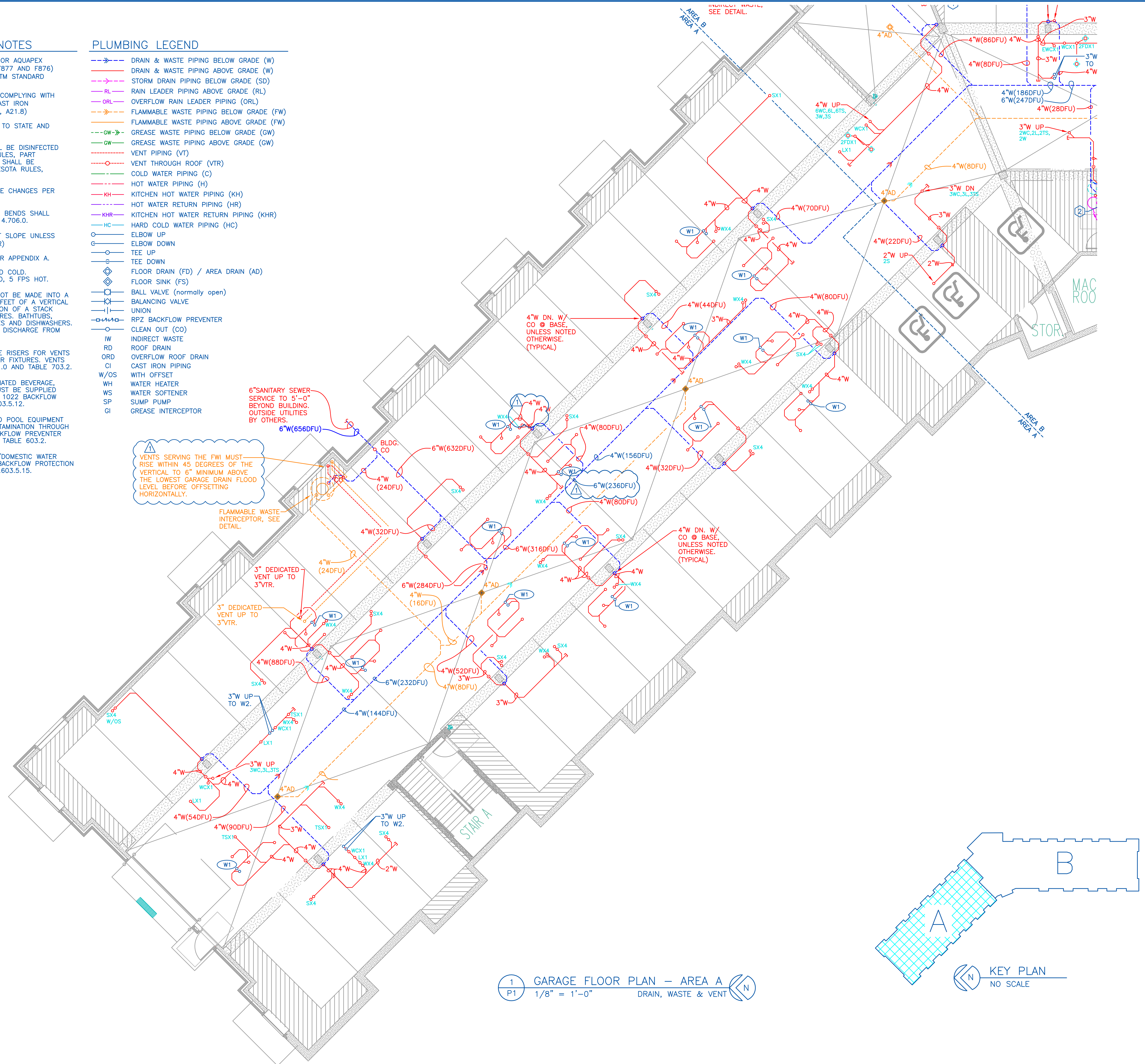
- ① 1-1/2" VTR UP, TIE INTO VTR.
- ② 2" VTR UP, TIE INTO VTR.
- ③ 3" VTR UP, TIE INTO VTR.

**PLUMBING GENERAL NOTES**

1. DOMESTIC WATER PIPING – UPONOR AQUAPEX (COMPLYING WITH ASTM STANDARD F877 AND F876) AND/OR CPVC (COMPLYING WITH ASTM STANDARD D2846)
2. ALL DWV – SCHEDULE 40 PVC (COMPLYING WITH ASTM STANDARD D2665) AND/OR CAST IRON (MEETING ASTM A-74 & ANSI A21.6, A21.8)
3. PLUMBING INSTALLED ACCORDING TO STATE AND LOCAL PLUMBING CODES.
4. THE WATER PIPING SYSTEM SHALL BE DISINFECTED IN ACCORDANCE WITH MINNESOTA RULES, PART 4714.609.9. THE PLUMBING SYSTEM SHALL BE TESTED IN ACCORDANCE WITH MINNESOTA RULES, PART 4714.609.4.
5. PROVIDE CLEANOUTS AT PIPE SIZE CHANGES PER MN RULES, PART 4714.707.4.
6. APPROPRIATE USE OF WYE'S AND BENDS SHALL BE USED PER MN RULES, PART 4714.706.0.
7. SANITARY SEWER @ 1/4" PER FT SLOPE UNLESS SHOWN OTHERWISE. (4" AND LARGER)
8. DOMESTIC WATER PIPE SIZING PER APPENDIX A. 2015 MN PLUMBING CODE. CPVC MAINS @ MAX 8 FPS HOT AND COLD. PEX RUN-OUTS @ MAX 8 FPS COLD, 5 FPS HOT.
9. DRAINAGE CONNECTIONS SHALL NOT BE MADE INTO A DRAINAGE PIPING SYSTEM WITHIN 8 FEET OF A VERTICAL TO HORIZONTAL CHANGE OF DIRECTION OF A STACK CONTAINING SUDS PRODUCING FIXTURES, BATHTUBS, LAUNDRIES, WASHERS, KITCHEN SINKS AND DISHWASHERS. (EXCEPTION: STACKS RECEIVING THE DISCHARGE FROM LESS THAN THREE STORIES.)
10. VERIFY SIZE OF VENT ON WASTE RISERS FOR VENTS TIED INTO VENT STACKS FROM OTHER FIXTURES. VENTS SHALL BE PER MN RULES 4714.901.0 AND TABLE 703.2.
11. BEVERAGE DISPENSERS, CARBONATED BEVERAGE MACHINES, AND COFFEE MAKERS MUST BE SUPPLIED THROUGH AN AIR GAP OR AN ASSE 1022 BACKFLOW PREVENTOR PER MN RULES 4714.603.5.12.
12. POTABLE WATER CONNECTION TO POOL EQUIPMENT SHALL BE PROTECTED AGAINST CONTAMINATION THROUGH THE USE OF AIR GAP, OR RPZ BACKFLOW PREVENTOR PER MN RULES 4714.603.5.21 AND TABLE 603.2.
13. COMBINATION FIRE PROTECTION/DOMESTIC WATER SERVICE SHALL COMPLY WITH THE BACKFLOW PROTECTION REQUIREMENTS OF MN RULES 4714.603.5.15.

**PLUMBING LEGEND**

- DWV PIPING BELOW GRADE (W)
- DWV PIPING ABOVE GRADE (W)
- STORM DRAIN PIPING BELOW GRADE (SD)
- RAIN LEADER PIPING ABOVE GRADE (RL)
- OVERFLOW RAIN LEADER PIPING (ORL)
- FLAMMABLE WASTE PIPING BELOW GRADE (FW)
- FLAMMABLE WASTE PIPING ABOVE GRADE (FW)
- GREASE WASTE PIPING BELOW GRADE (GW)
- GREASE WASTE PIPING ABOVE GRADE (GW)
- VENT PIPING (VT)
- VENT THROUGH ROOF (VTR)
- COLD WATER PIPING (C)
- HOT WATER PIPING (H)
- KITCHEN HOT WATER PIPING (KH)
- HOT WATER RETURN PIPING (HR)
- KITCHEN HOT WATER RETURN PIPING (KHR)
- HARD COLD WATER PIPING (HC)
- ELBOW UP
- ELBOW DOWN
- TEE UP
- TEE DOWN
- FLOOR DRAIN (FD) / AREA DRAIN (AD)
- FLOOR SINK (FS)
- BALL VALVE (normally open)
- BALANCING VALVE
- UNION
- RPZ BACKFLOW PREVENTOR
- CLEAN OUT (CO)
- IW INDIRECT WASTE
- RD ROOF DRAIN
- ORD OVERFLOW ROOF DRAIN
- CI CAST IRON PIPING
- W/OS WITH OFFSET
- WH WATER HEATER
- WS WATER SOFTENER
- SP SUMP PUMP
- GI GREASE INTERCEPTOR



VENTS SERVING THE FWI MUST RISE WITHIN 45 DEGREES OF THE VERTICAL TO 6" MINIMUM ABOVE THE LOWEST GARAGE DRAIN FLOOD LEVEL BEFORE OFFSETTING HORIZONTALLY.

FLAMMABLE WASTE INTERCEPTOR, SEE DETAIL.

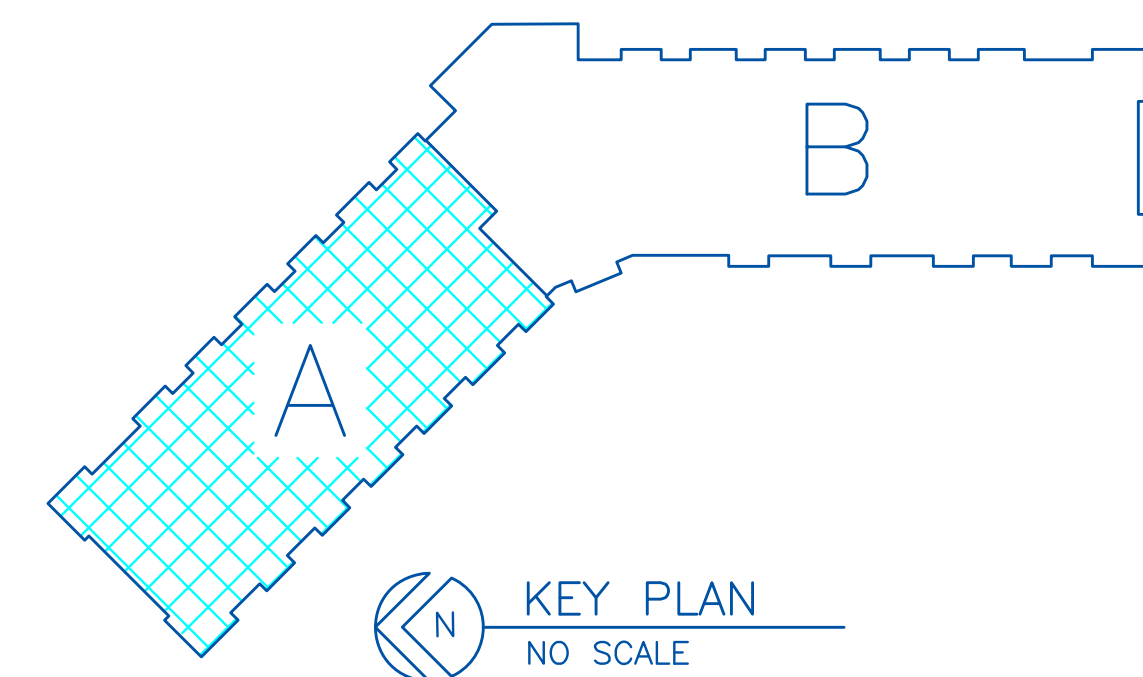
3" DEDICATED VENT UP TO 3" VTR.

3" DEDICATED VENT UP TO 3" VTR.

3" W UP TO W2.

3" W UP TO W2.

① GARAGE FLOOR PLAN – AREA A  
P1 1/8" = 1'-0" DRAIN, WASTE & VENT



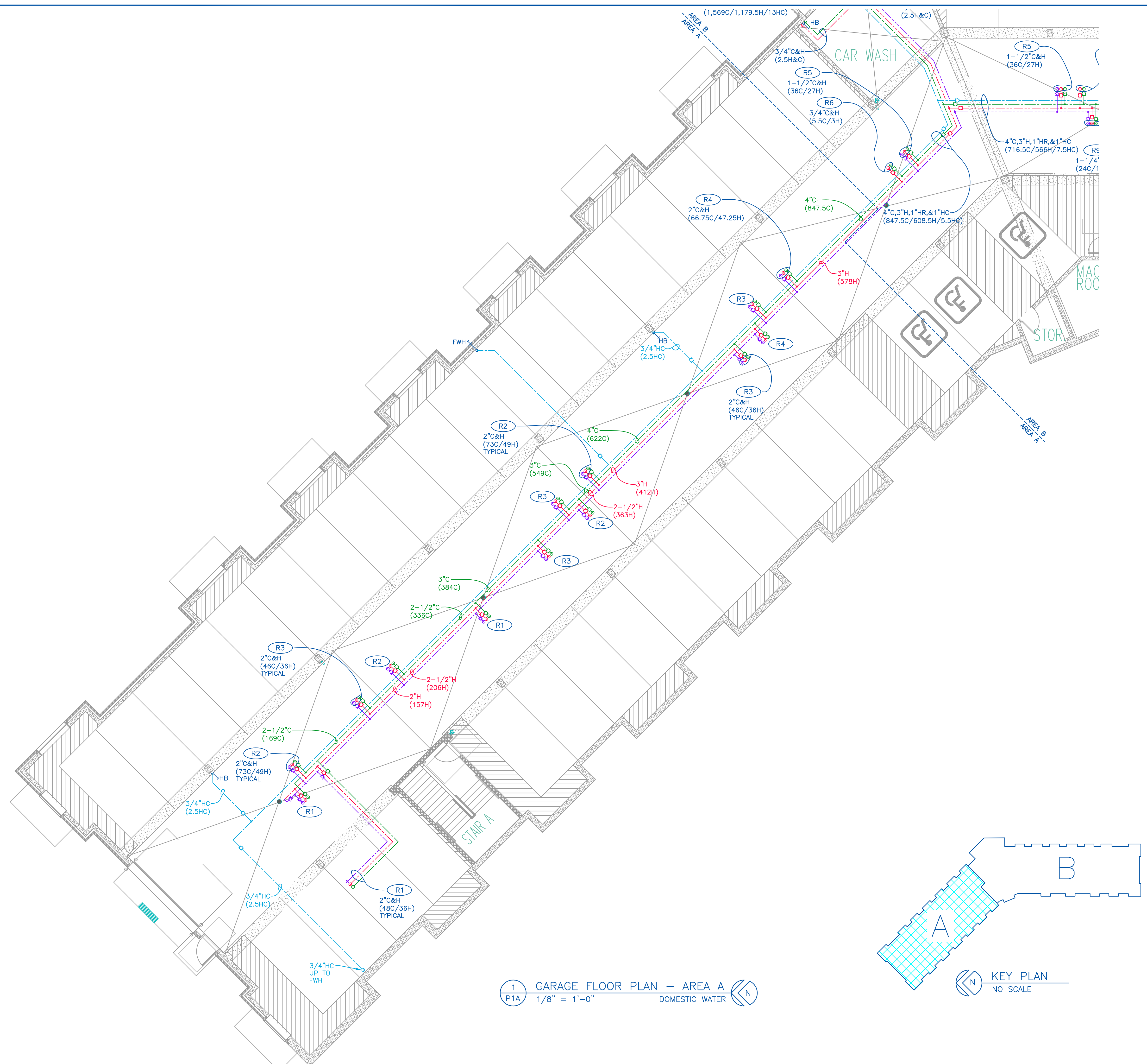
DATE: 03/29/19  
MICHAEL A. JOHNSON 061313PLU

**BERD**  
Mechanical Contractors, Inc.  
1 INDUSTRIAL BLDG. - SAUK RAPIDS, MN 56379  
TEL: 320-658-0314  
FAX: 320-658-0314

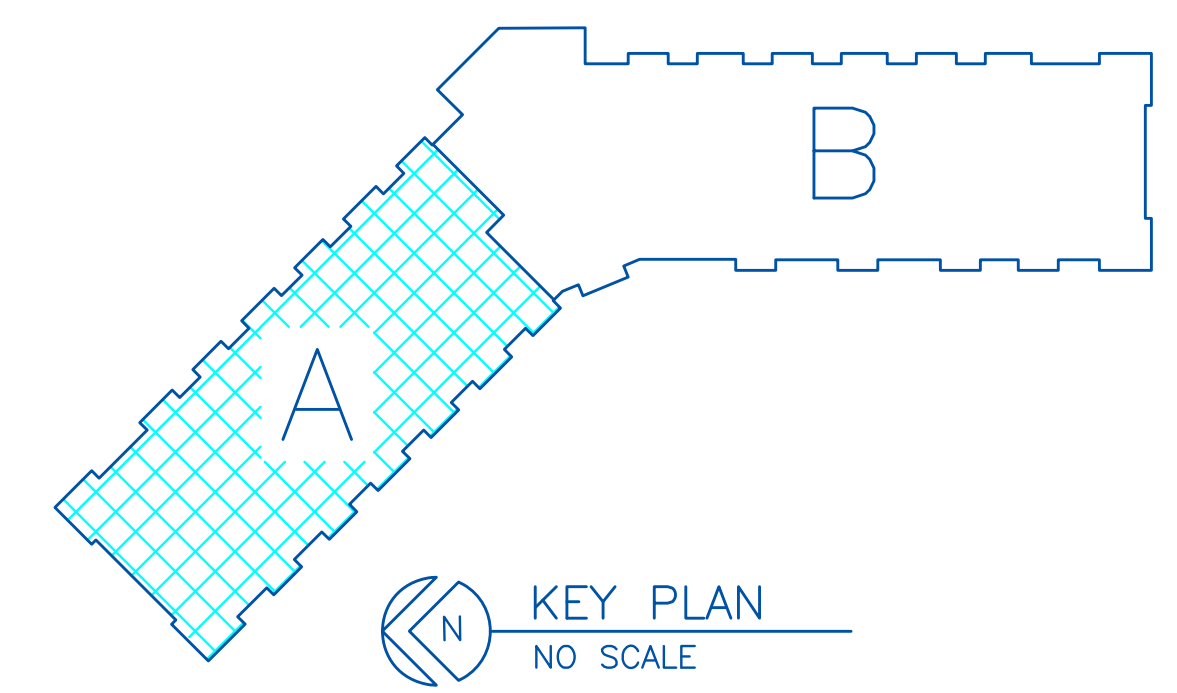
DATE	REVISION	DESCRIPTION	BY
05/24/19	A	PER MDLI REQUEST	JTM
---	---	---	---
---	---	---	---

DATE: 03/29/19  
SCALE: AS SHOWN  
DRAWN BY: JTM  
CHECKED BY: MAJ  
JOB NO.: 19-1929

PARK PLACE APARTMENT  
RED WING, MN  
GARAGE FLOOR PLAN – AREA A



1 GARAGE FLOOR PLAN — AREA A  
 P1A 1/8" = 1'-0" DOMESTIC WATER



DATE: 03/29/19  
 MICHAEL A. JOHNSON 061313PM

**BERD**  
 Mechanical Contractors, Inc.  
 1 INDUSTRIAL BLVD. - SAUK RAPIDS, MN 56379  
 FAX: 320-658-0312

DATE	REVISION	DESCRIPTION	BY
--/--/--	A		
--/--/--	A		
--/--/--	A		

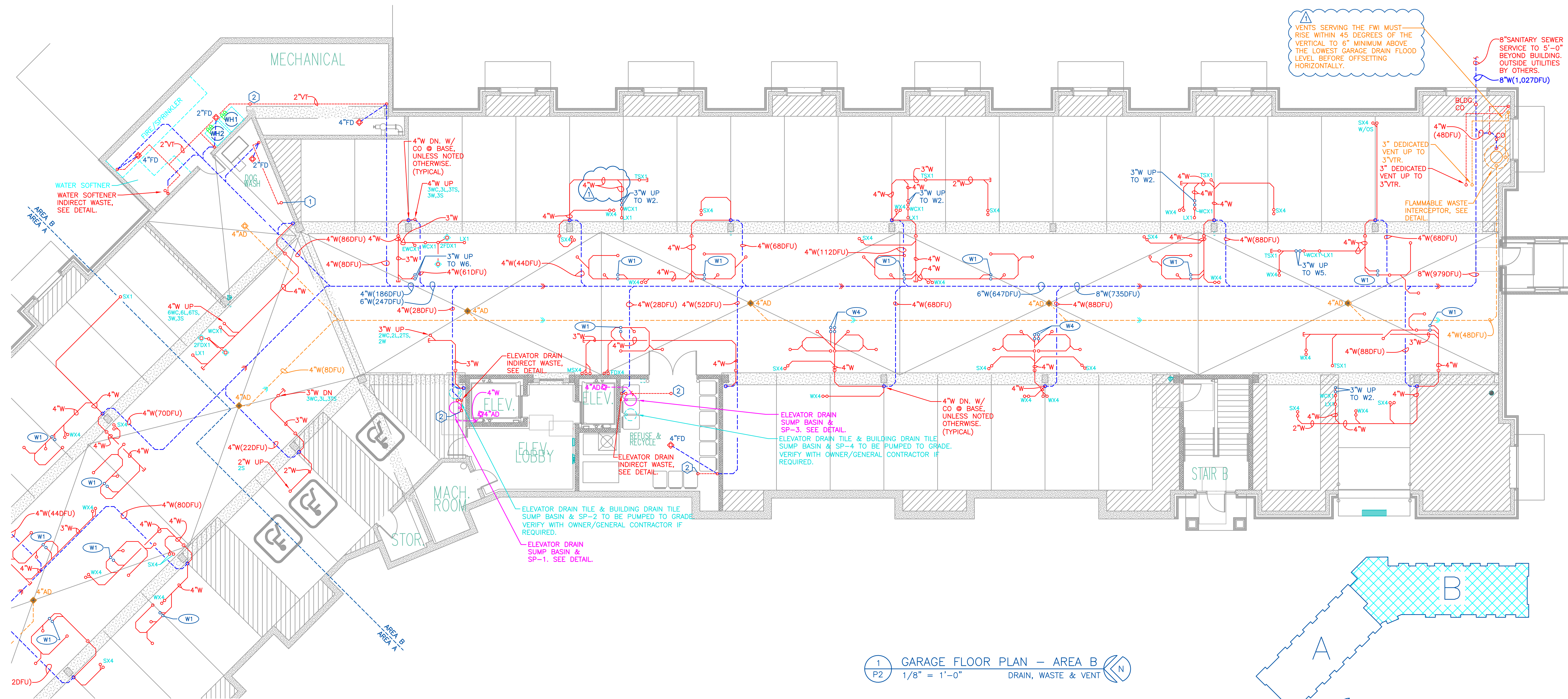
DATE: 03/29/19  
 SCALE: AS SHOWN  
 DRAWN BY: JTM  
 CHECKED BY: MAJ  
 JOB NO.: 19-1929

PARK PLACE APARTMENT  
 RED WING, MN  
 GARAGE FLOOR PLAN — AREA A

DRAWING NO.  
 P1A

PLUMBING REFERENCE NOTES

- ① 1-1/2" V. UP, TIE INTO VTR.
- ② 2" V. UP, TIE INTO VTR.
- ③ 3" V. UP, TIE INTO VTR.



VENTS SERVING THE FWI MUST RISE WITHIN 45 DEGREES OF THE VERTICAL TO 6\"/>

8\"/>

① GARAGE FLOOR PLAN - AREA B  
 P2 1/8" = 1'-0" DRAIN, WASTE & VENT



DATE: 03/29/19  
 MICHAEL A. JOHNSON 061313PLU

**BIRD**  
 Mechanical Contractors, Inc.  
 1 INDUSTRIAL BLDG. - SAUK RAPIDS, MN 56379  
 FAX: 320-658-0312

DATE	REVISION	DESCRIPTION	BY
05/24/19	A	PER MDL REQUEST	JTM

DATE: 03/29/19  
 SCALE: AS SHOWN  
 DRAWN BY: JTM  
 CHECKED BY: MAJ  
 JOB NO.: 19-1929

PARK PLACE APARTMENT  
 RED WING, MN  
 GARAGE FLOOR PLAN - AREA B

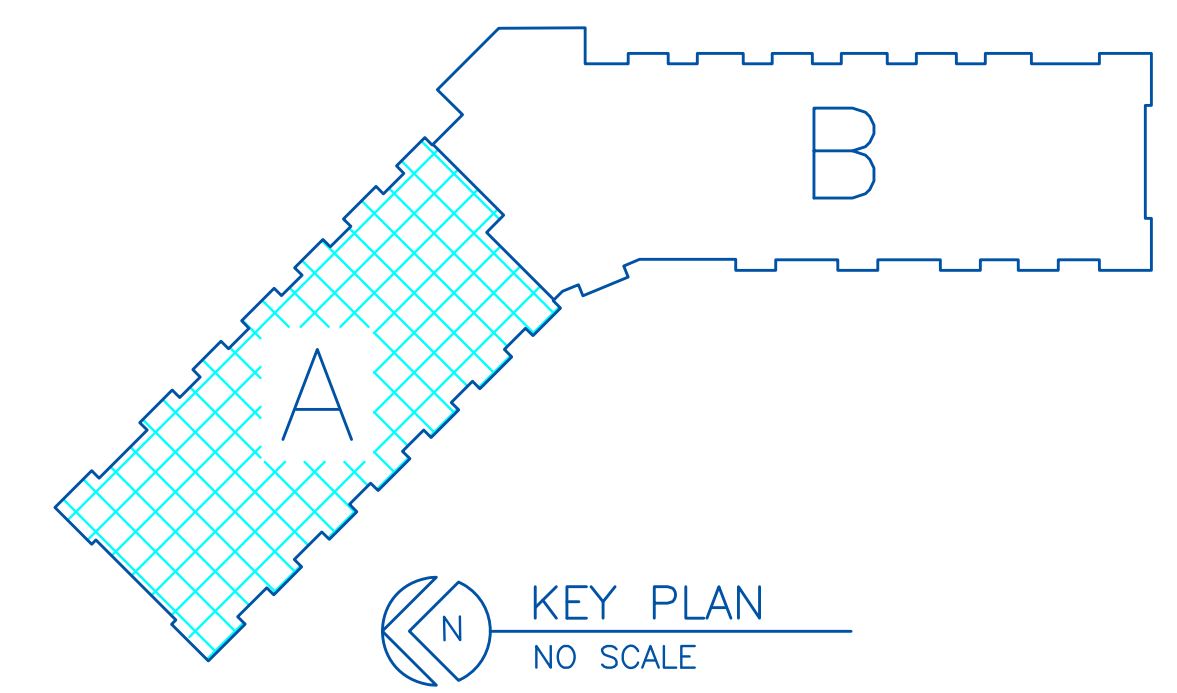


PLUMBING REFERENCE NOTES

- ① 1-1/2"VT UP, TIE INTO VTR.
- ② 2"VT UP, TIE INTO VTR.
- ③ 3"VT UP, TIE INTO VTR.



① FIRST FLOOR PLAN - AREA A  
 P3 1/8" = 1'-0" PLUMBING



KEY PLAN  
 NO SCALE

DATE: 03/29/19  
 MICHAEL A. JOHNSON 061312PL

**JBERD**  
 Mechanical Contractors, Inc.  
 1 INDUSTRIAL BLVD. - SAUK RAPIDS, MN 56379  
 FAX: 320-658-0312

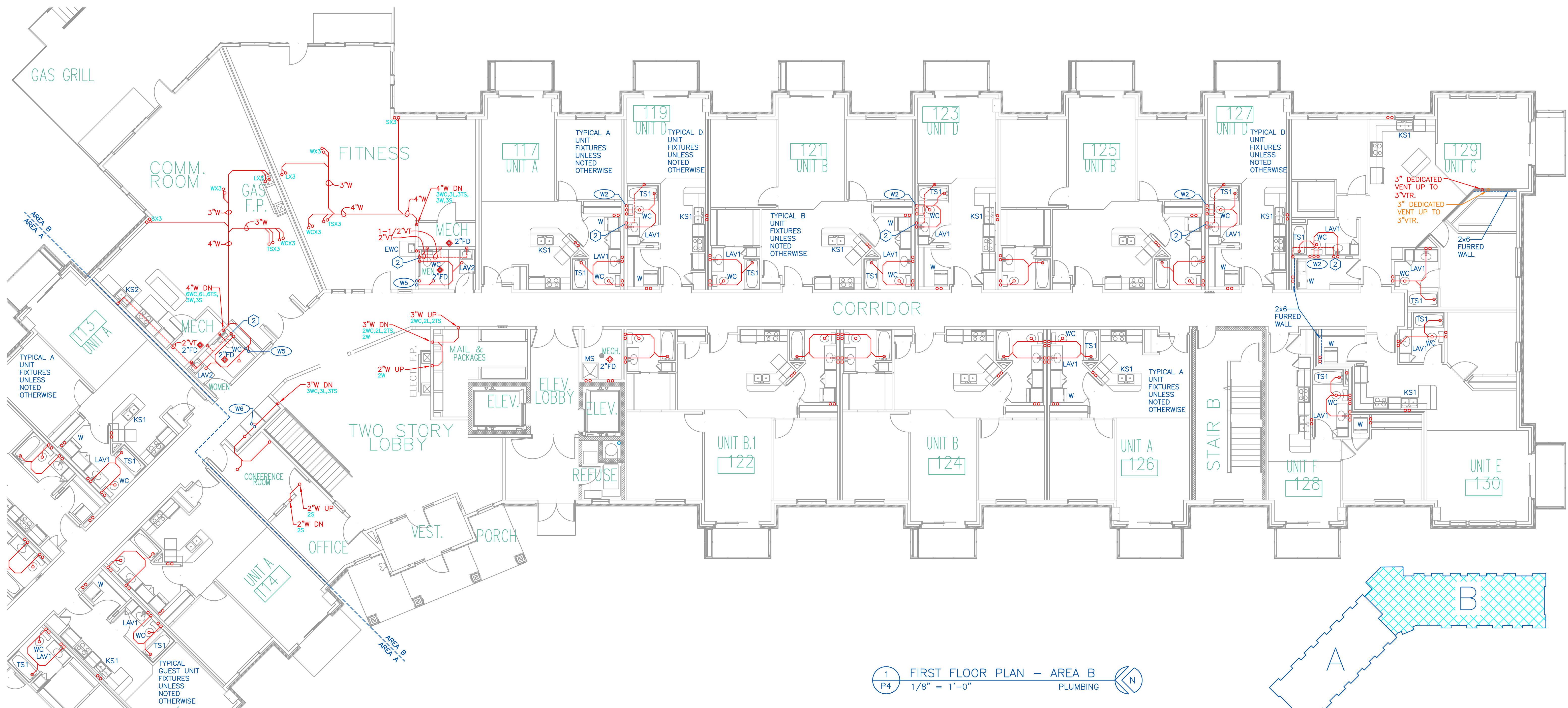
DATE	REVISION	DESCRIPTION	BY
--/--/--	A		
--/--/--	A		
--/--/--	A		

DATE: 03/29/19  
 SCALE: AS SHOWN  
 DRAWN BY: JTM  
 CHECKED BY: MAJ  
 JOB NO.: 19-1929

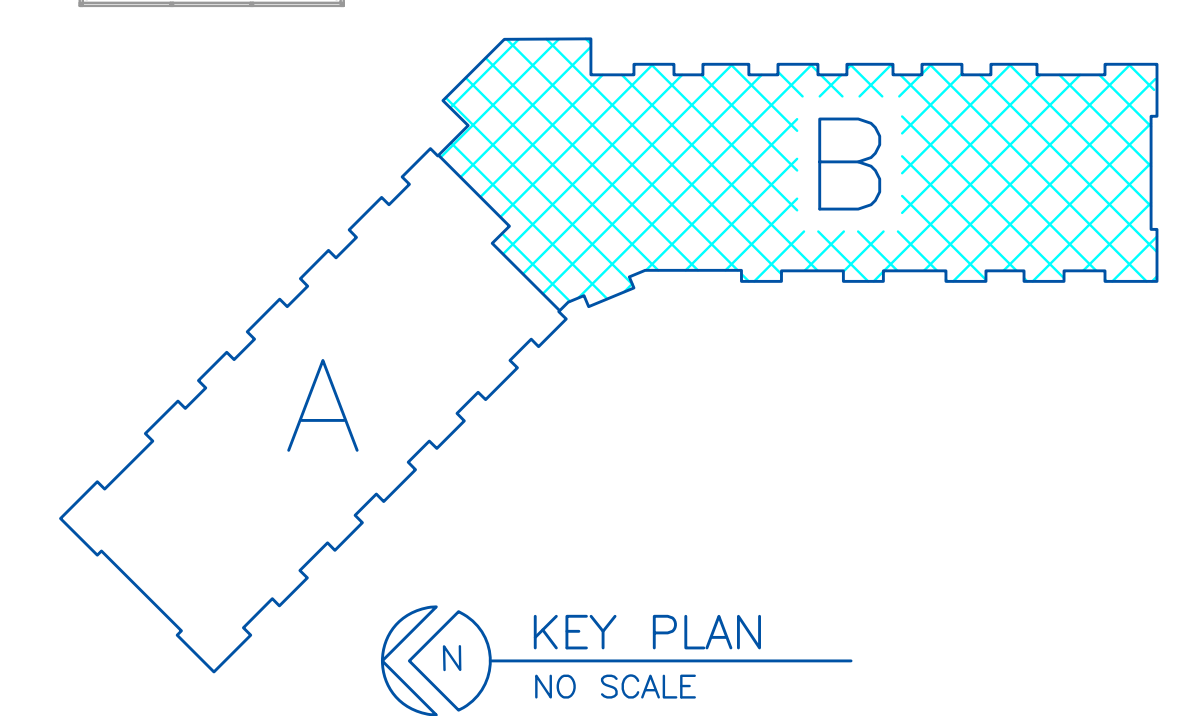
PARK PLACE APARTMENT  
 RED WING, MN  
 FIRST FLOOR PLAN - AREA A

PLUMBING REFERENCE NOTES

- ① 1-1/2"VT UP, TIE INTO VTR.
- ② 2"VT UP, TIE INTO VTR.
- ③ 3"VT UP, TIE INTO VTR.



1 FIRST FLOOR PLAN - AREA B  
 P4 1/8" = 1'-0" PLUMBING



KEY PLAN  
 NO SCALE

DATE: 03/29/19  
 MICHAEL A. JOHNSON 061313PM

**JBERD**  
 Mechanical Contractors, Inc.  
 1 INDUSTRIAL BLVD. - SAUK RAPIDS, MN 56379  
 FAX: 320-658-0312

DATE	REVISION	DESCRIPTION	BY
03/29/19	A		
	A		
	A		

DATE: 03/29/19  
 SCALE: AS SHOWN  
 DRAWN BY: JTM  
 CHECKED BY: MAJ  
 JOB NO.: 19-1929

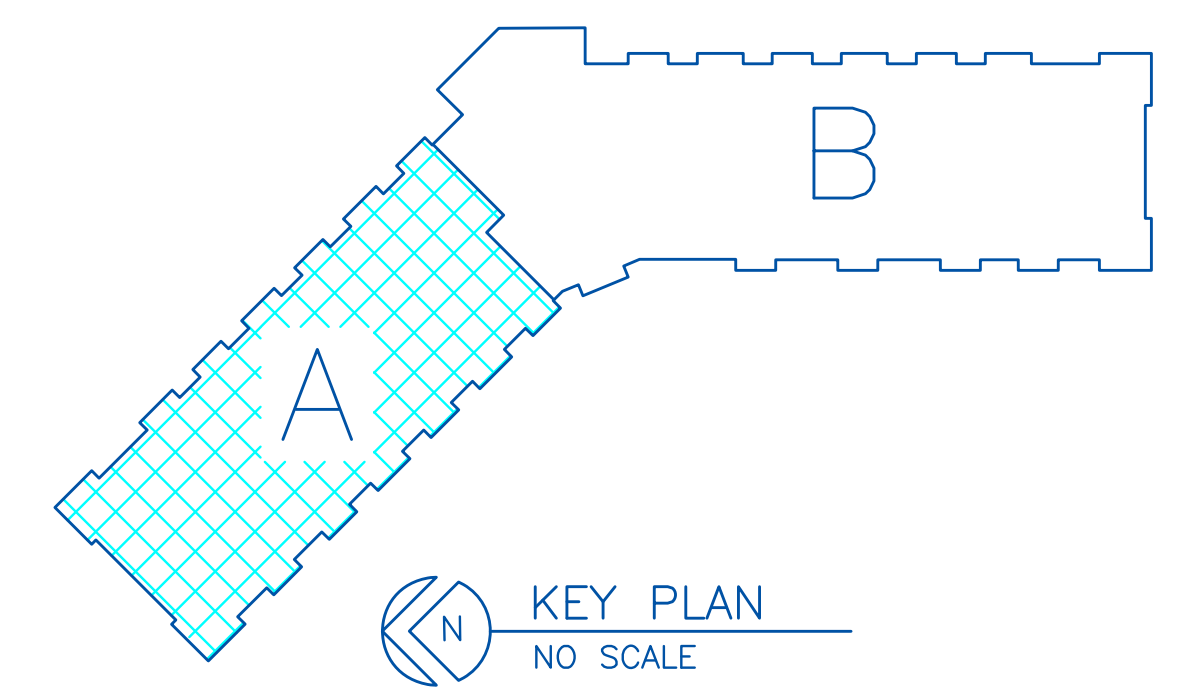
PARK PLACE APARTMENT  
 RED WING, MN  
 FIRST FLOOR PLAN - AREA B

PLUMBING REFERENCE NOTES

- ① 1-1/2"VT UP, TIE INTO VTR.
- ② 2"VT UP, TIE INTO VTR.
- ③ 3"VT UP, TIE INTO VTR.



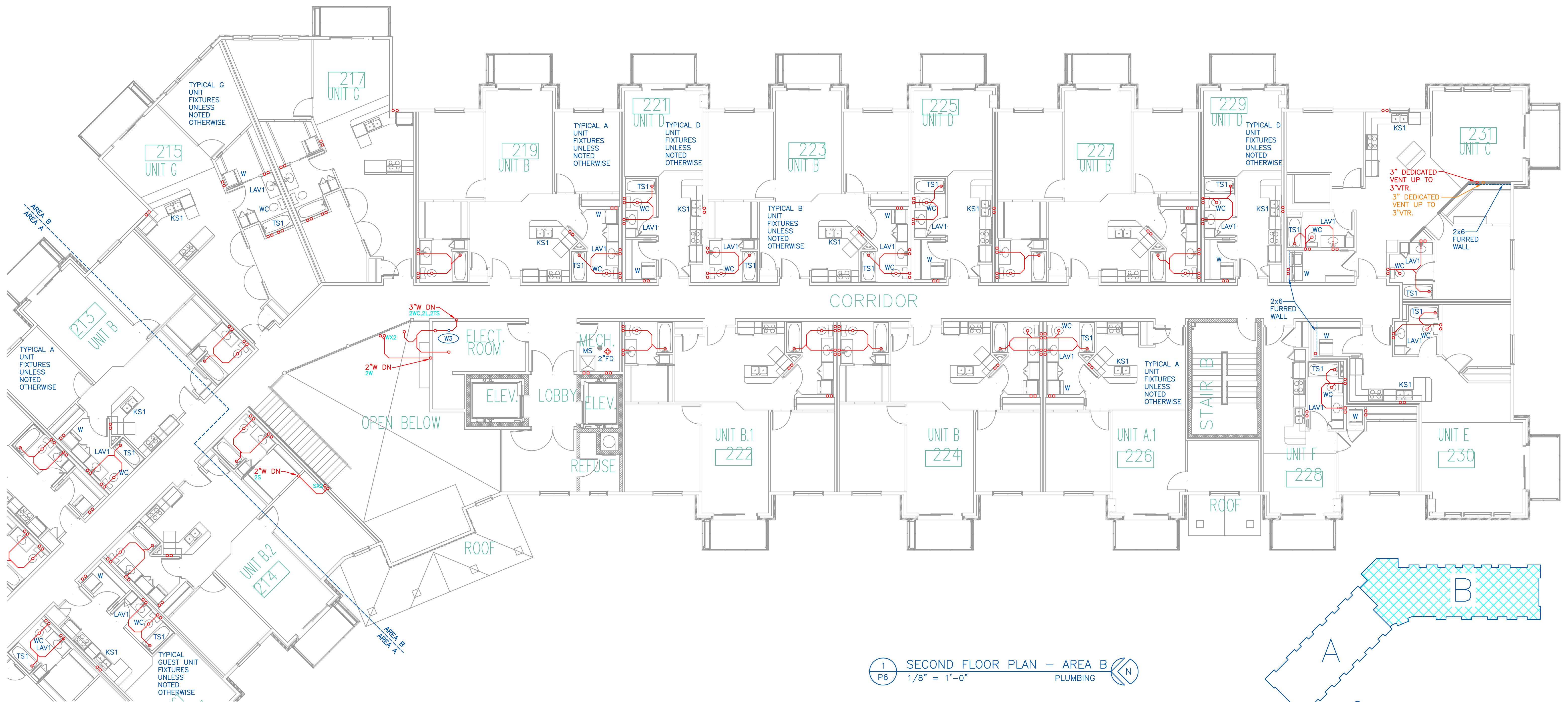
① SECOND FLOOR PLAN — AREA A  
 P5 1/8" = 1'-0" PLUMBING



<p><b>JBERD</b>          Mechanical Contractors, Inc.          1 INDUSTRIAL BLVD. - SAUK RAPIDS, MN 56379          FAX: 320-658-0312</p>	<p>DATE: 03/29/19          MICHAEL A. JOHNSON 061313PLU</p>	<table border="1" style="width: 100%; border-collapse: collapse;"> <thead> <tr> <th>DATE</th> <th>REVISION</th> <th>DESCRIPTION</th> <th>BY</th> </tr> </thead> <tbody> <tr> <td>03/29/19</td> <td>A</td> <td>AS SHOWN</td> <td>JTM</td> </tr> <tr> <td></td> <td>A</td> <td></td> <td>MAJ</td> </tr> <tr> <td></td> <td>A</td> <td></td> <td></td> </tr> </tbody> </table>	DATE	REVISION	DESCRIPTION	BY	03/29/19	A	AS SHOWN	JTM		A		MAJ		A			<p>DATE: 03/29/19          SCALE: AS SHOWN          DRAWN BY: JTM          CHECKED BY: MAJ          JOB NO.: 19-1929</p>
DATE	REVISION	DESCRIPTION	BY																
03/29/19	A	AS SHOWN	JTM																
	A		MAJ																
	A																		
<p>PARK PLACE APARTMENT          RED WING, MN          SECOND FLOOR PLAN — AREA A</p>		<p>DRAWING NO.          P5</p>																	

PLUMBING REFERENCE NOTES

- ① 1-1/2" VTR, TIE INTO VTR.
- ② 2" VTR, TIE INTO VTR.
- ③ 3" VTR, TIE INTO VTR.



1 SECOND FLOOR PLAN - AREA B  
 P6 1/8" = 1'-0" PLUMBING



DATE: 03/29/19  
 MICHAEL A. JOHNSON 061313P1

**JBERD**  
 Mechanical Contractors, Inc.  
 1 INDUSTRIAL BLVD. - SAUK RAPIDS, MN 56379  
 FAX: 320-658-0312

DATE	REVISION	DESCRIPTION	BY
03/29/19	A		
	A		
	A		

DATE: 03/29/19  
 SCALE: AS SHOWN  
 DRAWN BY: JTM  
 CHECKED BY: MAJ  
 JOB NO.: 19-1929

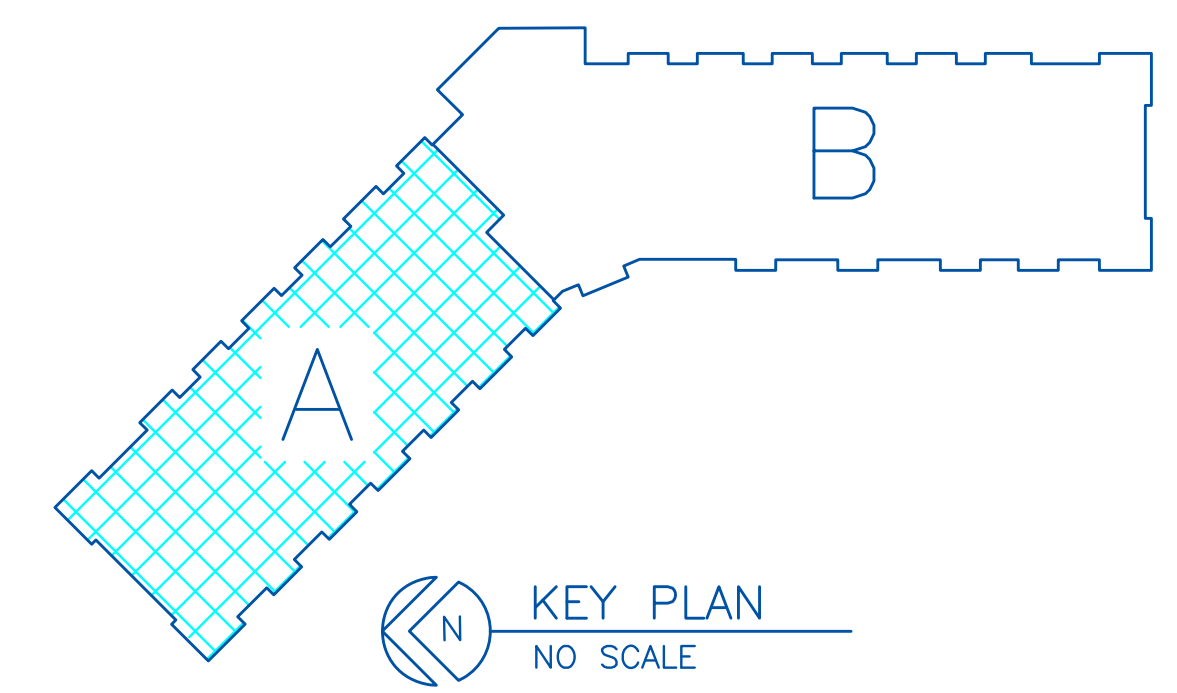
PARK PLACE APARTMENT  
 RED WING, MN  
 SECOND FLOOR PLAN - AREA B

PLUMBING REFERENCE NOTES

- ① 1-1/2"VT UP, TIE INTO VTR.
- ② 2"VT UP, TIE INTO VTR.
- ③ 3"VT UP, TIE INTO VTR.



1 THIRD FLOOR PLAN - AREA A  
 P7 1/8" = 1'-0" PLUMBING



DATE: 03/29/19  
 MICHAEL A. JOHNSON 061313PL

**JBERD**  
 Mechanical Contractors, Inc.  
 1 INDUSTRIAL BLVD. - SAUK RAPIDS, MN 56379  
 FAX: 320-698-0312

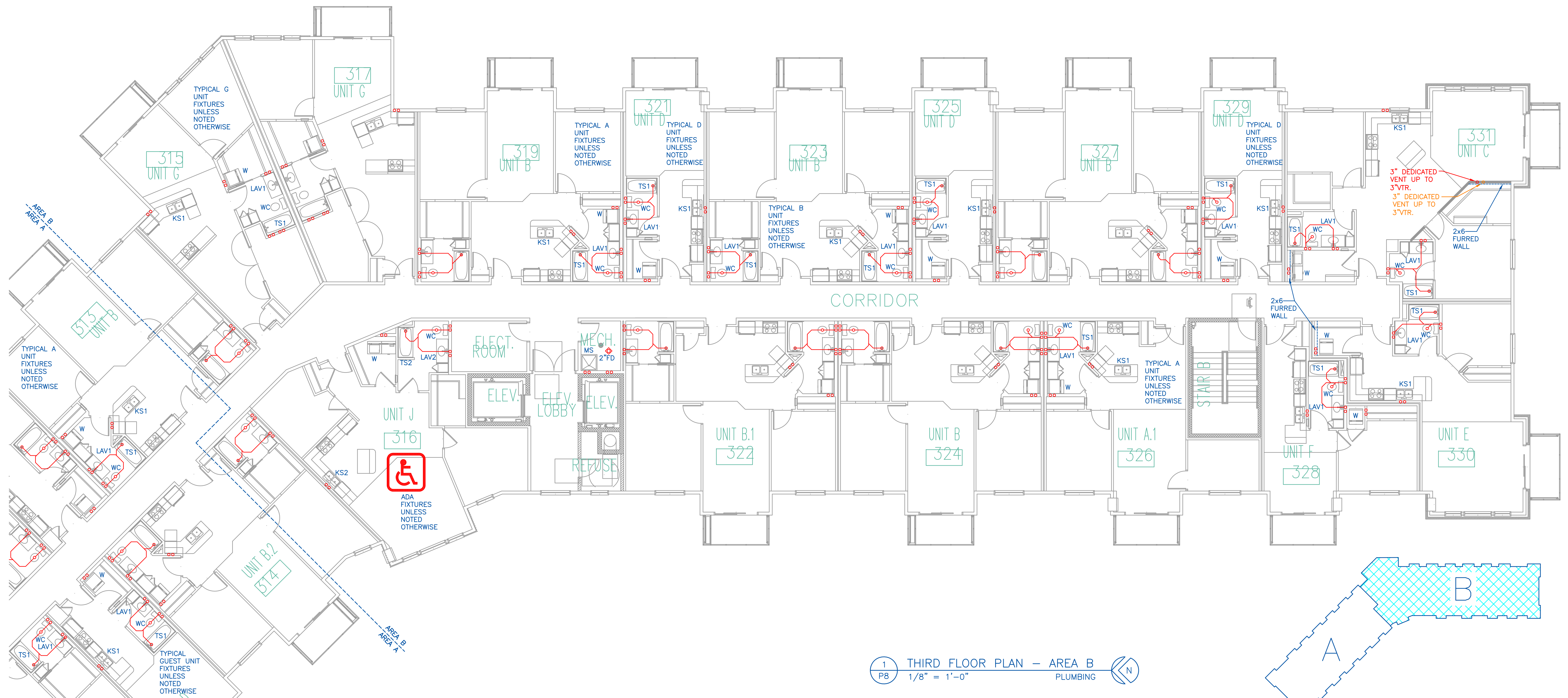
DATE	REVISION	DESCRIPTION	BY
--/--/--	A		
--/--/--	A		
--/--/--	A		

DATE: 03/29/19  
 SCALE: AS SHOWN  
 DRAWN BY: JTM  
 CHECKED BY: MAJ  
 JOB NO.: 19-1929

PARK PLACE APARTMENT  
 RED WING, MN  
 THIRD FLOOR PLAN - AREA A

PLUMBING REFERENCE NOTES

- ① 1-1/2"VT UP, TIE INTO VTR.
- ② 2"VT UP, TIE INTO VTR.
- ③ 3"VT UP, TIE INTO VTR.



1 THIRD FLOOR PLAN - AREA B  
 P8 1/8" = 1'-0" PLUMBING

KEY PLAN  
 NO SCALE

DATE: 03/29/19  
 MICHAEL A. JOHNSON 061313PLU

**JBERD**  
 Mechanical Contractors, Inc.  
 1 INDUSTRIAL BLVD. - SAUK RAPIDS, MN 56379  
 FAX: 320-658-0312

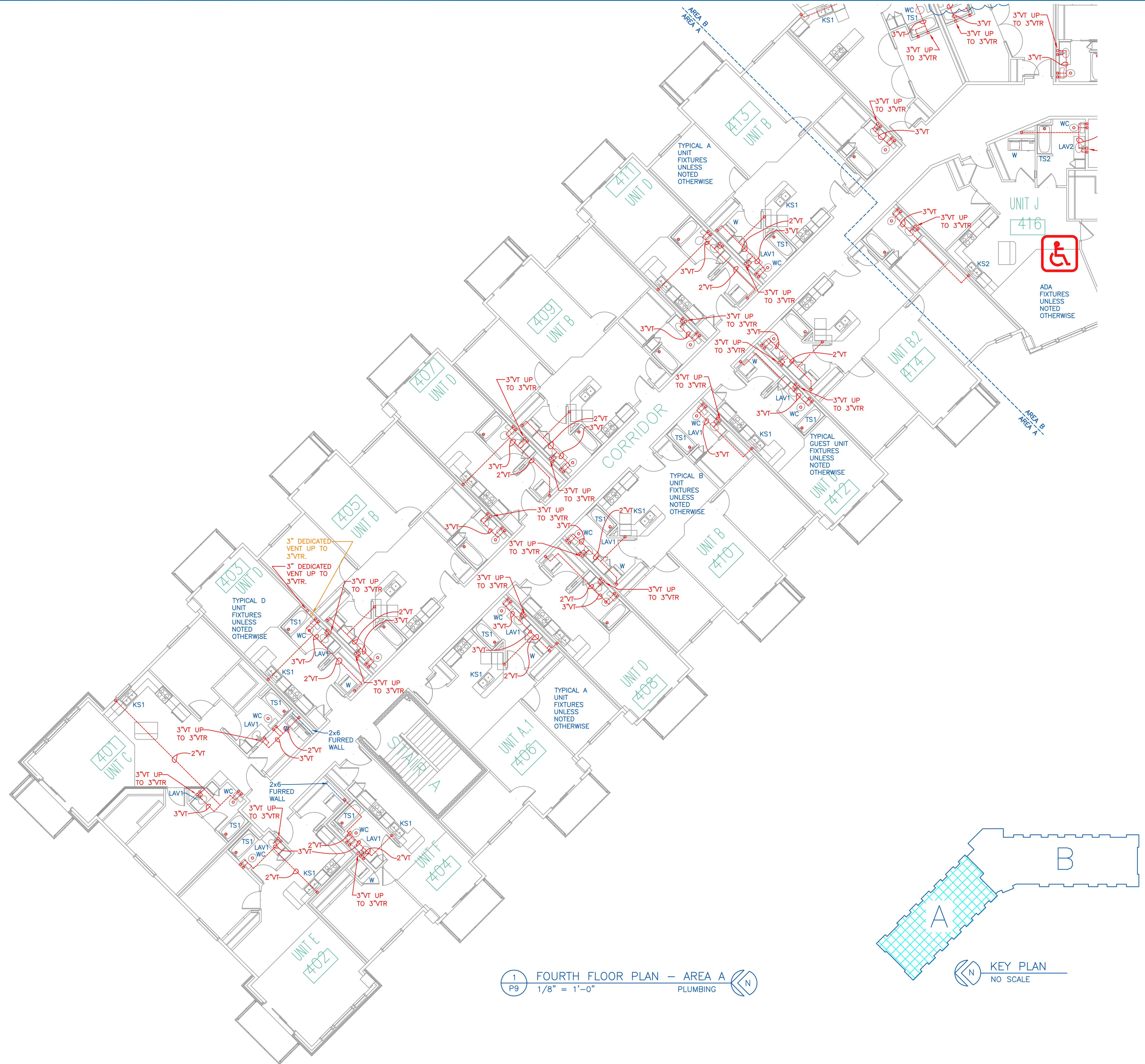
DATE	REVISION	DESCRIPTION	BY
03/29/19	A	AS SHOWN	JTM
	B	CHECKED BY: MAJ	
	C		

DATE: 03/29/19  
 SCALE: AS SHOWN  
 DRAWN BY: JTM  
 CHECKED BY: MAJ  
 JOB NO.: 19-1929

PARK PLACE APARTMENT  
 RED WING, MN  
 THIRD FLOOR PLAN - AREA B

PLUMBING REFERENCE NOTES

- ① 1-1/2"VT UP, TIE INTO VTR.
- ② 2"VT UP, TIE INTO VTR.
- ③ 3"VT UP, TIE INTO VTR.



① FOURTH FLOOR PLAN - AREA A  
 P9 1/8" = 1'-0" PLUMBING

KEY PLAN  
 NO SCALE

DATE: 03/29/19  
 MICHAEL A. JOHNSON 061313PL

**BERD**  
 Mechanical Contractors, Inc.  
 1 INDUSTRIAL BLVD. - SAUK RAPIDS, MN 56379  
 FAX: 320-658-0312

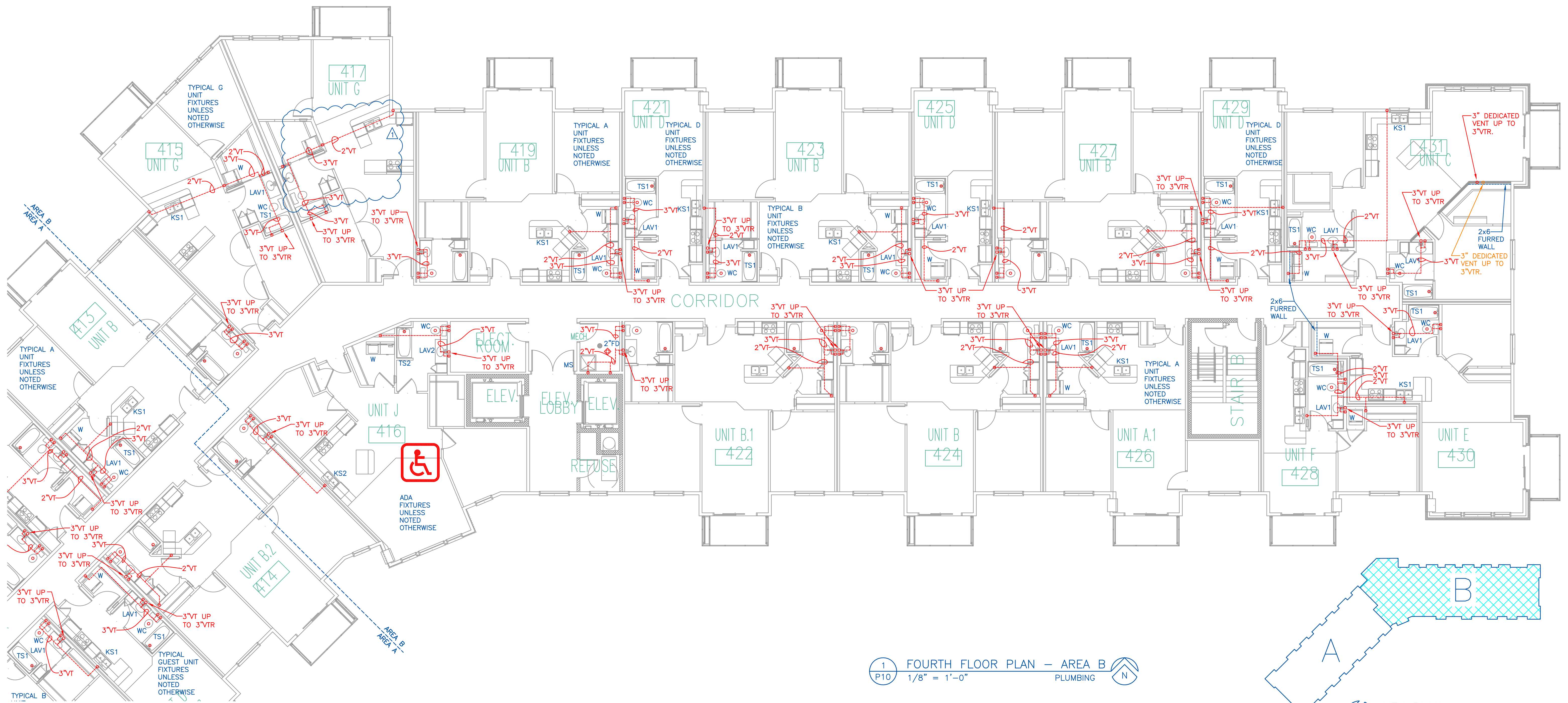
DATE	REVISION	DESCRIPTION	BY
03/29/19	A	AS SHOWN	JTM
	B		
	C		

DATE: 03/29/19  
 SCALE: AS SHOWN  
 DRAWN BY: JTM  
 CHECKED BY: MAJ  
 JOB NO.: 19-1929

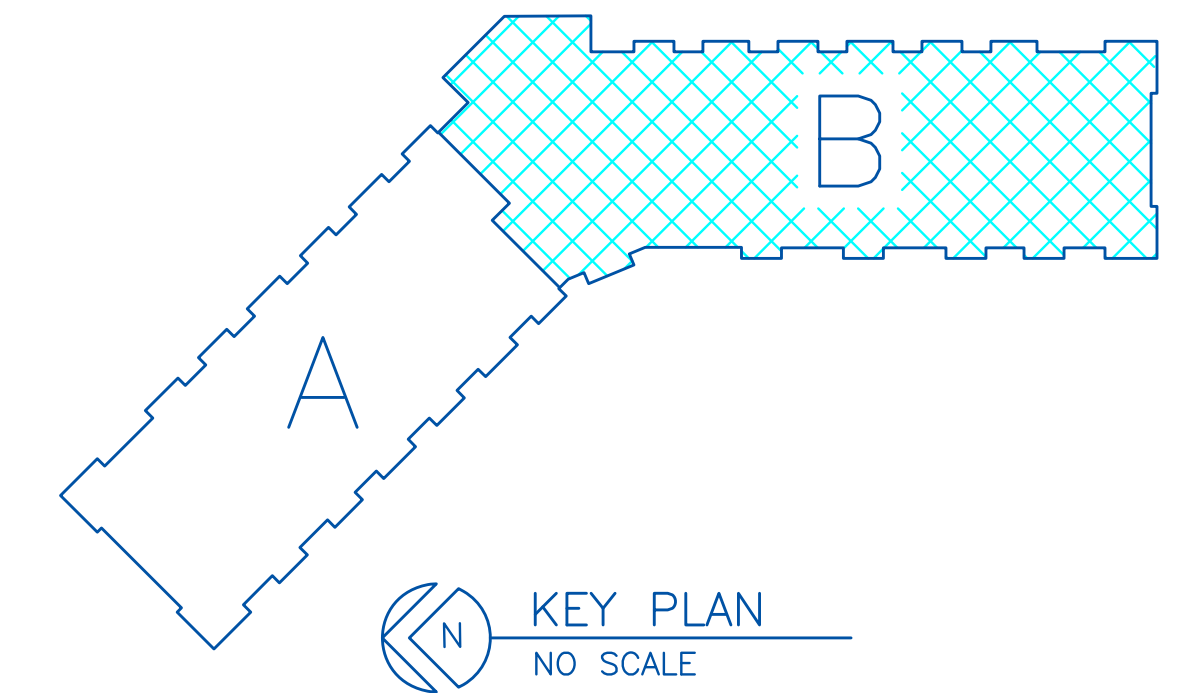
PARK PLACE APARTMENT  
 RED WING, MN  
 FOURTH FLOOR PLAN - AREA A

PLUMBING REFERENCE NOTES

- ① 1-1/2"VT UP, TIE INTO VTR.
- ② 2"VT UP, TIE INTO VTR.
- ③ 3"VT UP, TIE INTO VTR.



① FOURTH FLOOR PLAN - AREA B  
 P10 1/8" = 1'-0" PLUMBING



KEY PLAN  
 NO SCALE

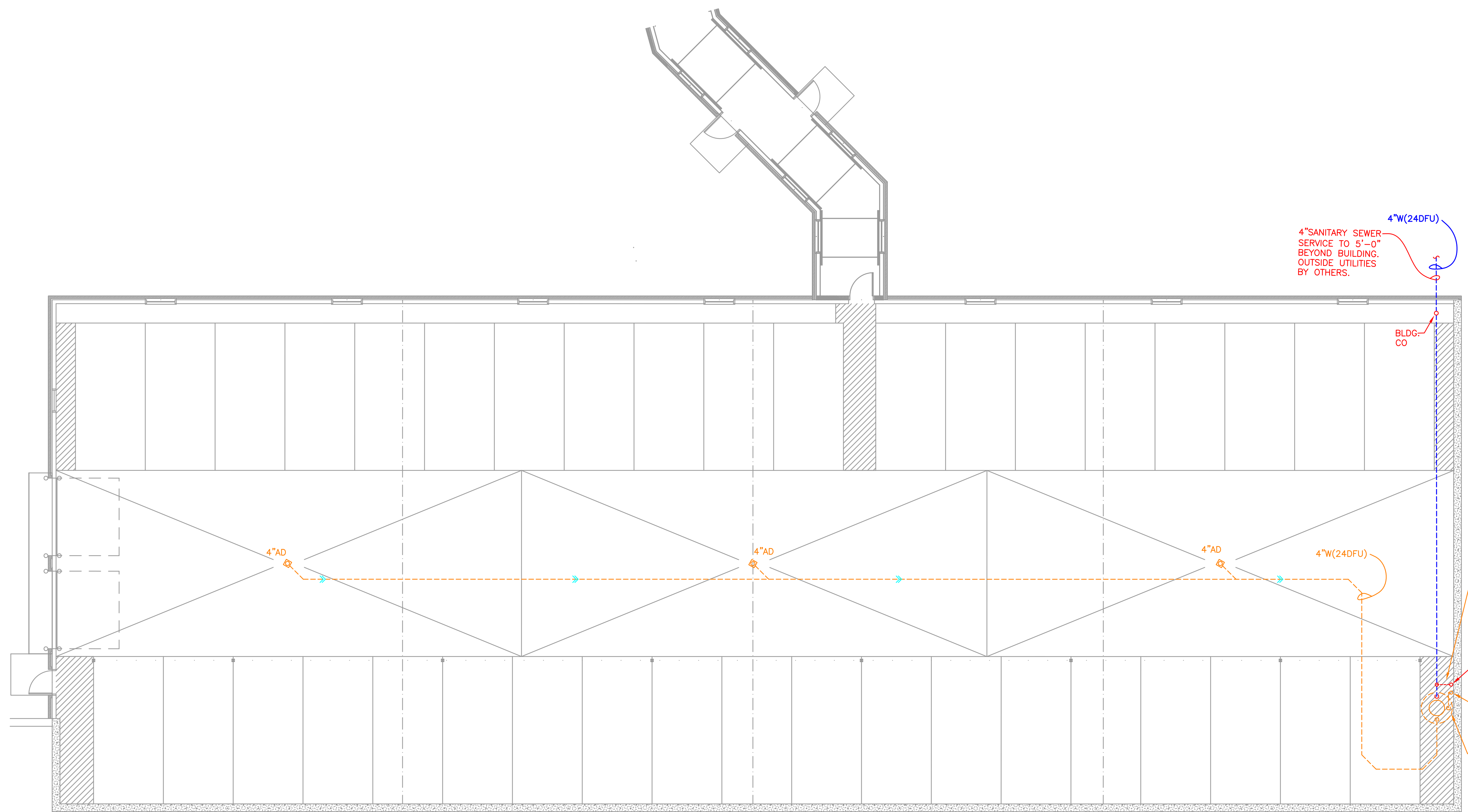
DATE: 03/29/19  
 MICHAEL A. JOHNSON 061313PLU

**JBERD**  
 Mechanical Contractors, Inc.  
 1 INDUSTRIAL BLVD. - SAUK RAPIDS, MN 56379  
 FAX: 320-658-0312

DATE	REVISION	DESCRIPTION	BY
05/24/19	A	PER MDL REQUEST	JTM

DATE: 03/29/19  
 SCALE: AS SHOWN  
 DRAWN BY: JTM  
 CHECKED BY: MAJ  
 JOB NO.: 19-1929

PARK PLACE APARTMENT  
 RED WING, MN  
 FOURTH FLOOR PLAN - AREA B



4\"/>

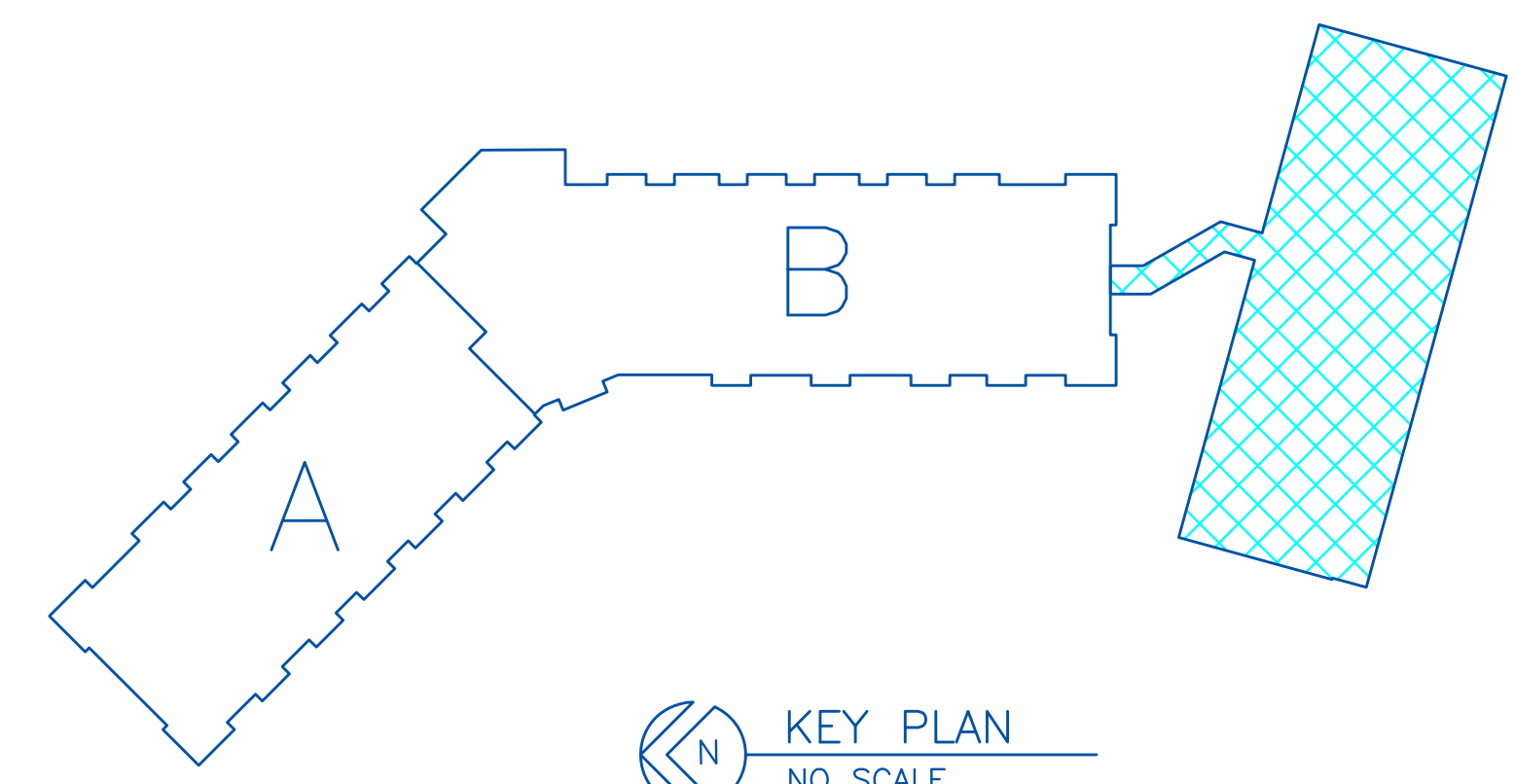
VENTS SERVING THE FWI MUST RISE WITHIN 45 DEGREES OF THE VERTICAL TO 6\"/>

3\"/>

3\"/>

FLAMMABLE WASTE INTERCEPTOR, SEE DETAIL.

1 DETACHED GARAGE & LINK  
 P11 1/8\"/>



DATE: 03/29/19  
 MICHAEL A. JOHNSON 061313PL

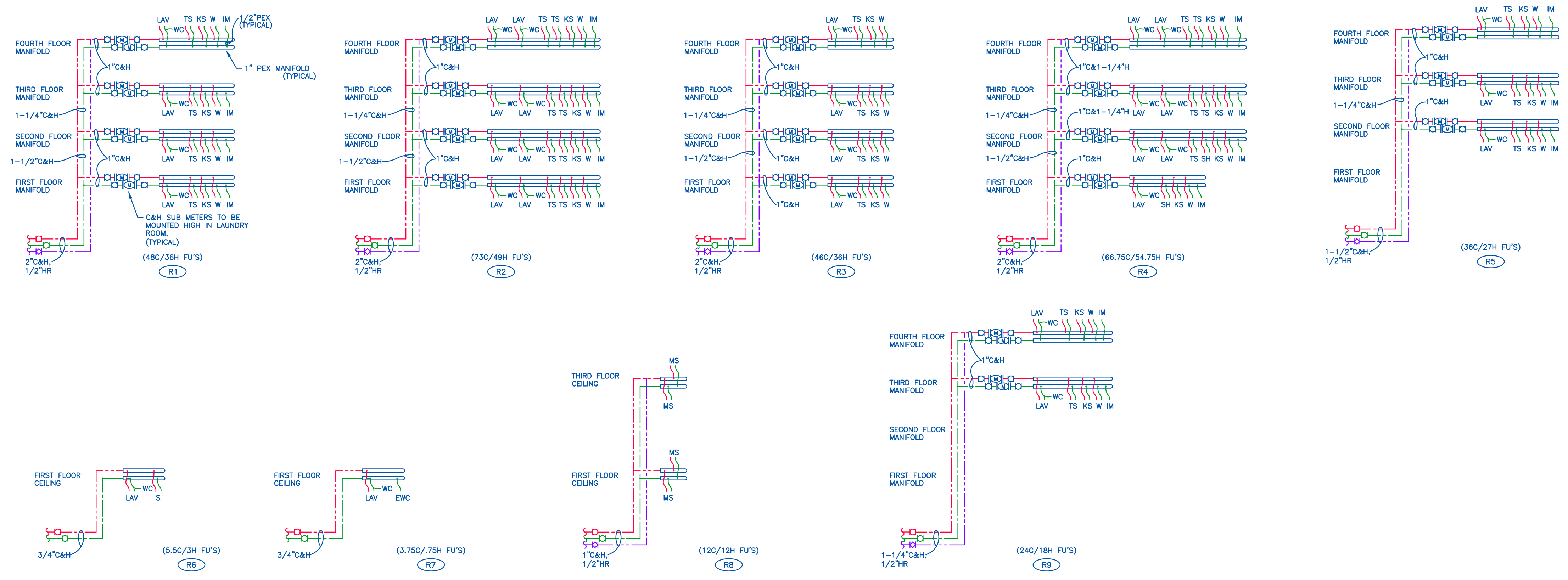
**JBERD**  
 Mechanical Contractors, Inc.  
 1 INDUSTRIAL BLVD., SAUK RAPIDS, MN 56379  
 FAX: 320-658-0312

DATE	REVISION	DESCRIPTION	BY
--/--/--	A		--
--/--/--	A		--
--/--/--	A		--

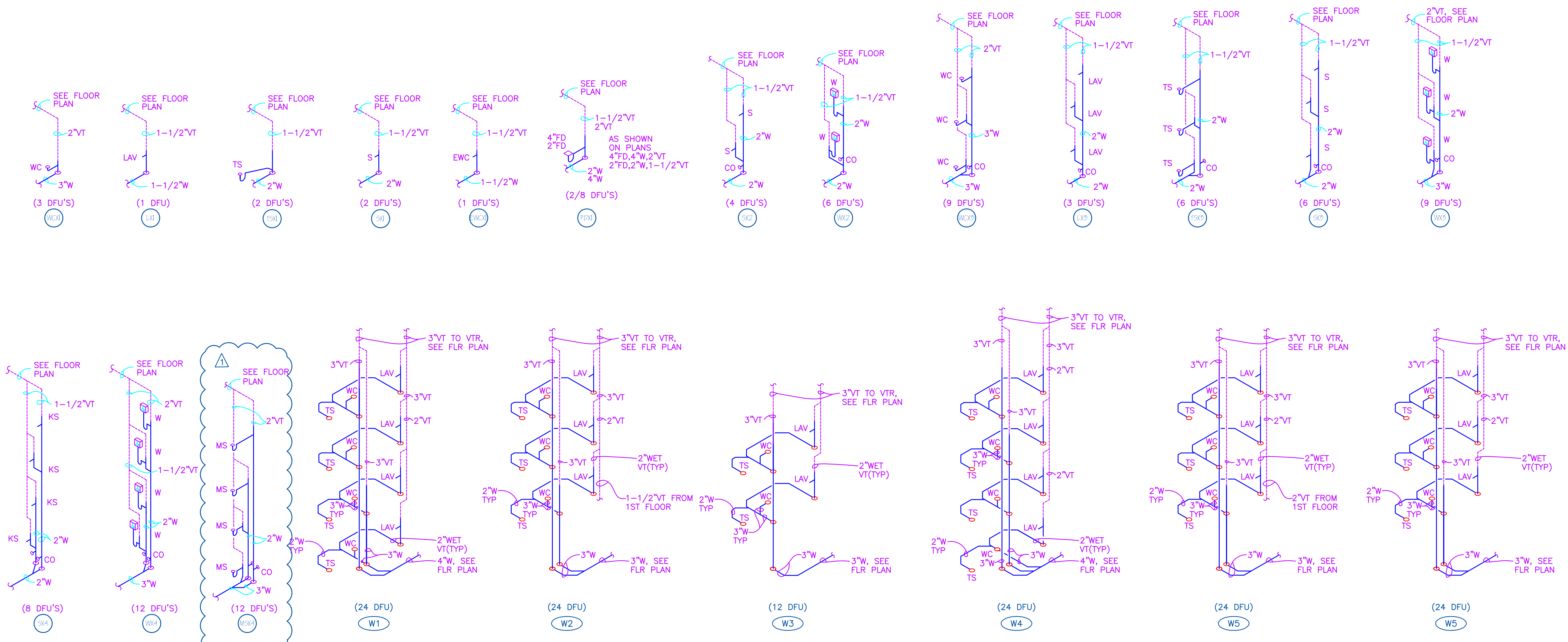
DATE: 03/29/19  
 SCALE: AS SHOWN  
 DRAWN BY: JTM  
 CHECKED BY: MAJ  
 JOB NO.: 19-1929

PARK PLACE APARTMENT  
 RED WING, MN  
 DETACHED GARAGE & LINK

DRAWING NO.  
 P11



1 ISOMETRICS  
NO SCALE DOMESTIC WATER



2 ISOMETRIC  
NO SCALE DRAIN, WASTE & VENT

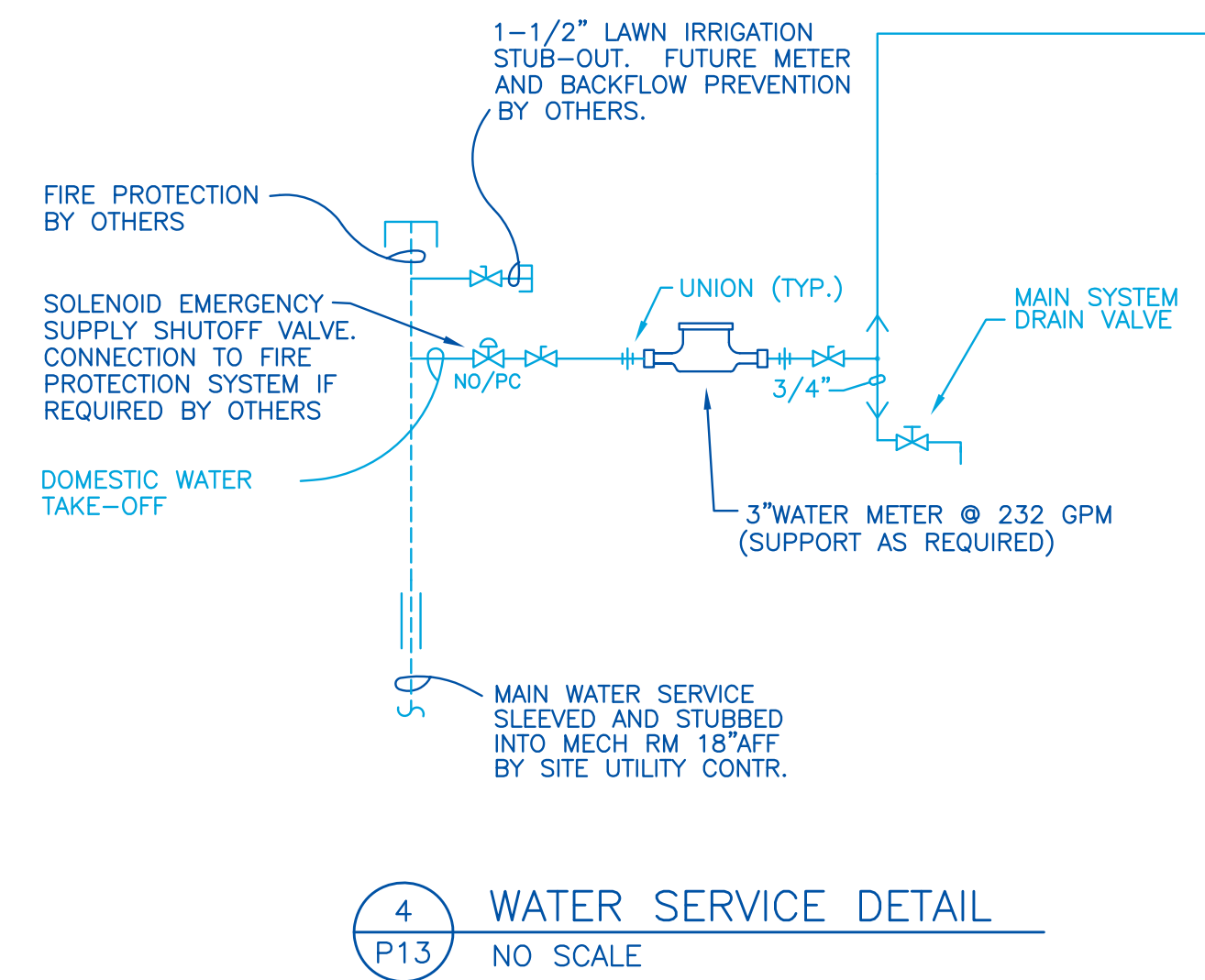
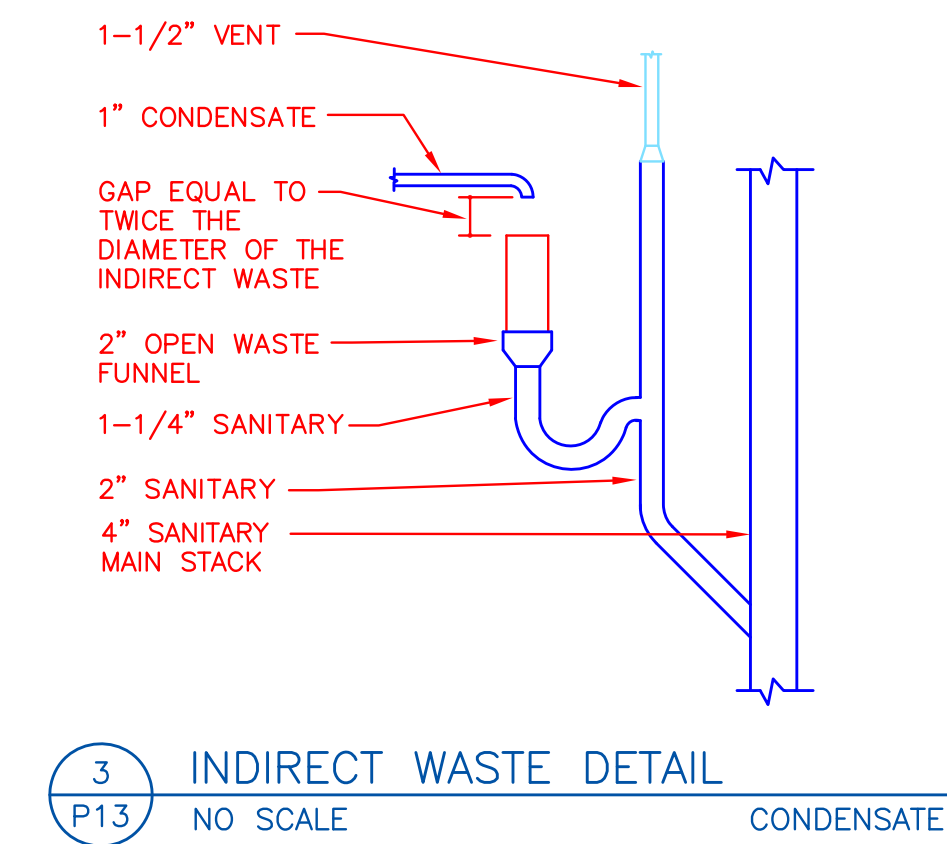
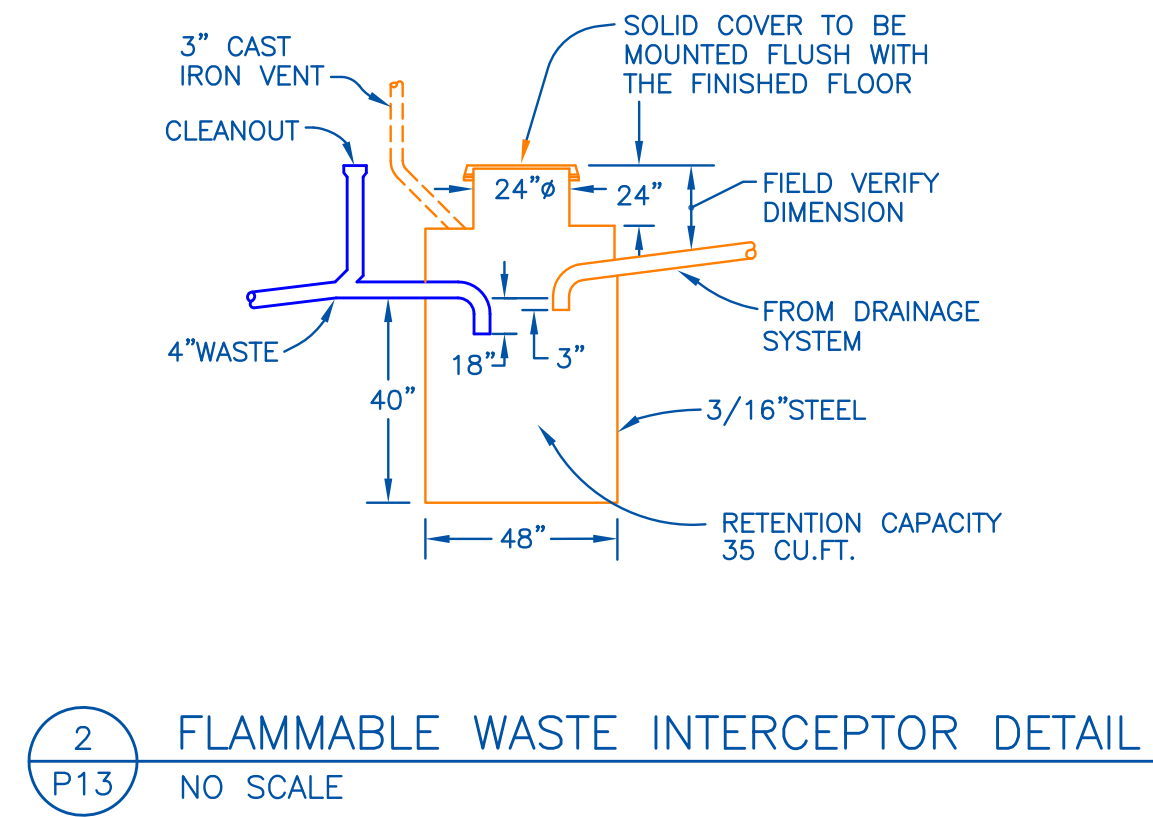
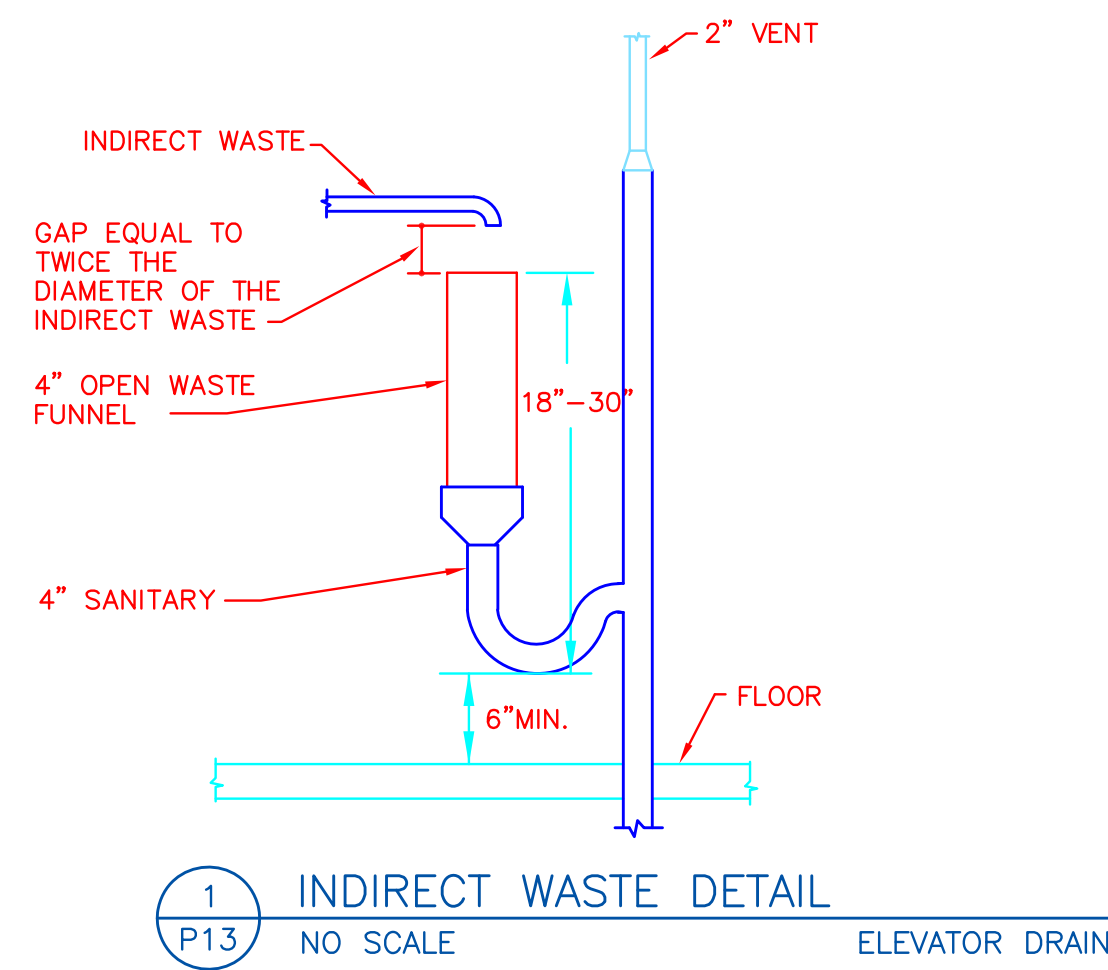
DATE: 03/29/19  
MICHAEL A. JOHNSON 061313PL

**BERD**  
Mechanical Contractors, Inc.  
1 INDUSTRIAL BLVD. SAUK RAPIDS, MN 56379  
TEL: 320-658-0312 FAX: 320-658-0312

DATE	REVISION	DESCRIPTION	BY
05/24/19	A	PER MDL REQUEST	JTM
---	B	---	---
---	C	---	---

DATE: 03/29/19  
SCALE: AS SHOWN  
DRAWN BY: JTM  
CHECKED BY: MAJ  
JOB NO.: 19-1929

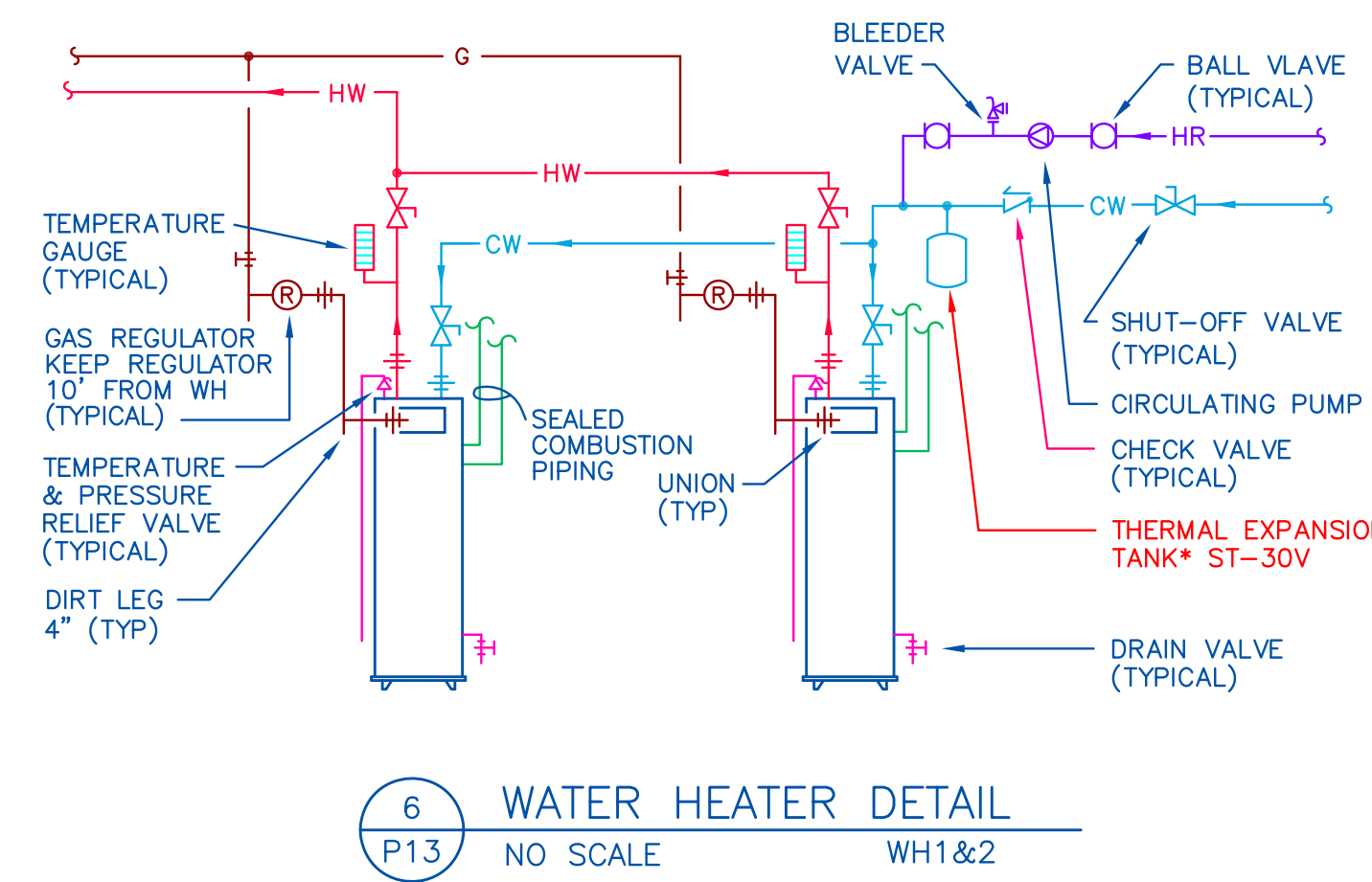
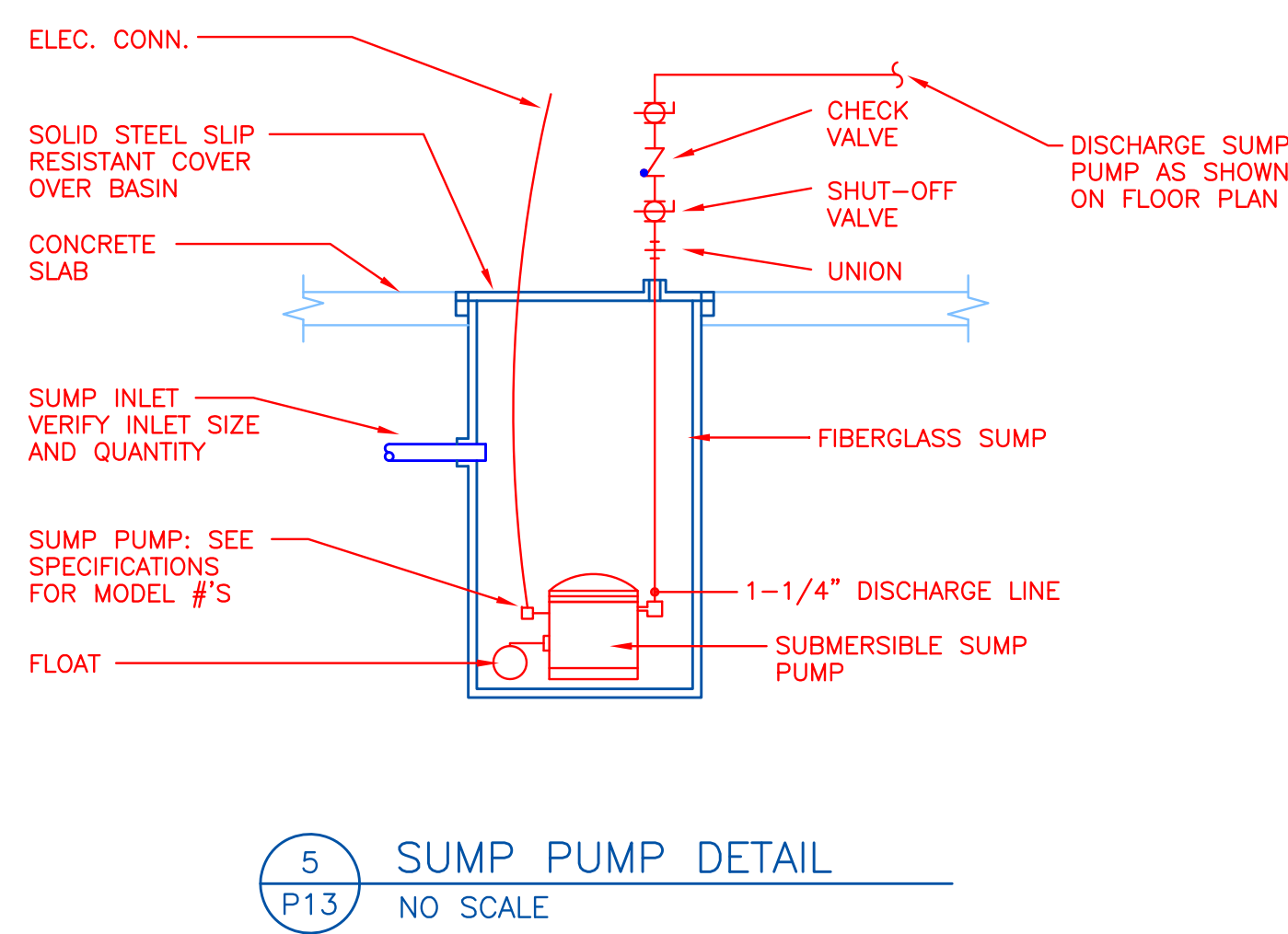
PARK PLACE APARTMENT  
RED WING, MN  
ISOMETRICS



PLUMBING FIXTURE SCHEDULE				
FIXTURE		WASTE	VENT	HOT COLD
WC	WATER CLOSET (ADA) - 1.28 GAL., VITREOUS CHINA ELONGATED - NIAGARA #N2225E-B, N2225T SEAT (PRIVATE) - ELONGATED, CLOSED FRONT, WITH COVER - MAINLINE #ML170 SEAT (PUBLIC) - ELONGATED, OPEN FRONT, LESS COVER - BENEKE #533	3"	2"	- 1"
LAV1	LAVATORY - CULTURED MARBLE TOPS BY OTHERS FAUCET - SINGLE LEVER HANDLE, CHROME PLATED, WITH PUSH & SEAL - PFISTER #J142-800C	2"	2"	1/2" 1/2"
LAV2	LAVATORY (ADA) - CULTURED MARBLE TOPS BY OTHERS FAUCET - SINGLE LEVER HANDLE, CHROME PLATED, WITH PUSH & SEAL - PFISTER #J142-800C TRAP WRAP - TRUEBRO #102EZ	2"	2"	1/2" 1/2"
LAV3	LAVATORY - CULTURED MARBLE TOPS BY OTHERS FAUCET - SINGLE LEVER HANDLE, CHROME PLATED, WITH GRID STRAINER - PFISTER #J142-800C TRAP WRAP - TRUEBRO #102EZ	2"	2"	1/2" 1/2"
TS1	TUB/SHOWER - 60"x33.25"x74"x16.25" TH, WHITE FIBERGLASS, WITH BACKING - SALO #T160 PRESSURE BALANCE SHOWER VALVE - PFISTER #JX8-340A, R89-7CBC - SIOUX CHIEF #972-36 TWIST 'N TURN DRAIN - WATCO #940-941 / SEAT AND GRAB BARS PROVIDED BY OTHERS	2"	1-1/2"	1/2" 1/2"
TS2	TUB/SHOWER (ADA) - 60"x34.375"x77", WHITE FIBERGLASS, WITH BACKING - SALO #T160 H PRESSURE BALANCE SHOWER VALVE - PFISTER #JX8-340A, J89-8CBC-SIOUX CHIEF #972-36 / HAND HELD SHOWER - PEERLESS #P62410 TWIST 'N TURN DRAIN - WATCO #940-941 / SEAT AND GRAB BARS PROVIDED BY OTHERS	2"	1-1/2"	1/2" 1/2"
KS1	KITCHEN SINK - 33"x22"x6", STAINLESS STEEL, DOUBLE COMPARTMENT - MAINLINE #MLK3322 FAUCET - SINGLE LEVER HANDLE, LESS SPRAY, WITH STRAINERS - PFISTER #J134-144C PROVIDE DISHWASHER CONNECTION / AIR GAP - LUXART # LX130-CP	2"	1-1/2"	1/2" 1/2"
KS2	KITCHEN SINK (ADA) - 33"x21"x5.5" STAINLESS STEEL, DOUBLE COMPARTMENT - MAINLINE #MLGE3321 FAUCET - SINGLE LEVER HANDLE, LESS SPRAY, WITH STRAINERS - PFISTER #J134-144C PROVIDE DISHWASHER CONNECTION / AIR GAP - LUXART # LX130-CP	2"	1-1/2"	1/2" 1/2"
MS	MOP SINK - 24"x24"x10", MOLDED STONE - MUSTEE #63MX FAUCET - ROUGH CHROME-PLATED CAST BRASS - T&S BRASS #B-0667-R6H	2"	1-1/2"	1/2" 1/2"
W	WASHER WALL BOX - DUAL DRAIN WASHING MACHINE BOX - MAINLINE #10500	2"	1-1/2"	1/2" 1/2"
EWC	ELECTRIC WATER COOLER - HI-LO WALL MOUNTED, BARRIER FREE, BOTTLE FILLER, ELECTRIC WATER COOLER - ELKAY #LZSTLWSSP	1-1/2"	1-1/2"	- 1/2"
FWH	FREEZE PROOF WALL HYDRANT - WOOD FORD #17	-	-	- 3/4"
HB	HOSE BIBB - WOODFORD #24P	-	-	- 3/4"

WATER HEATER SCHEDULE										
MARK	LOCATION	MANUFACTURER'S DESIGNATION	TYPE	INPUT MBH	STOR CAP GAL	REC GPH AT 100' F RISE	VENT SIZE	EXPANSION TANK	THERM EFFICIENCY %	REMARKS
WH1,2	MECH RM	LAARS UHE-100T-300E-3N	NG	300	100	335	3"/4"	ST-30V	92.0	SERVING: BUILDING CIRCULATING PUMP - GRUNDFOS #UPS26-99

SUMP PUMP SCHEDULE										
MARK	MANUFACTURE	MODEL	SERVES	TYPE	GPM	FLA	RPM	HP	VOLT/PHASE	CONTROL
SP-1,3	ZOELLER	#BN152	ELEV DRAIN	SIMPLEX	53	8.5	3450	.4	115/1	MECHANICAL FLOAT SWITCH
SP-2,4	PENTAIR	#MDC33	ELEVATOR DRAIN TILE	SIMPLEX	38	9.8	1550	1/3	115/1	MECHANICAL FLOAT SWITCH (VERIFY WITH GC IF REQUIRED, DRAIN TILE BY OTHERS)



DATE: 03/29/19  
DRAWN BY: JTM  
CHECKED BY: MAJ  
JOB NO.: 19-1929

**BERD**  
Mechanical Contractors, Inc.  
1 INDUSTRIAL BLDG. - SAUK RAPIDS, MN 56279  
TEL: 320-658-0317  
FAX: 320-658-0317

MICHAEL A. JOHNSON 061313PLU

PARK PLACE APARTMENT  
RED WING, MN  
DETAILS & SCHEDULE

DRAWING NO.  
P13