



1600 Marshall St NE, Suite 1
Minneapolis, MN 55413
www.blumentals.com

(p) (612) 331-2222
(f) (612) 331-2224
info@blumentals.com

Jim Moy, AIA
Principal/President & CEO

Andy Swartz, AIA
Principal/Vice President

Architects Supplemental Instruction (ASI)

Project: West Birch Apartments and Townhomes	ASI #: 04
Owner: West Birch Estates of Princeton	Date of Issuance: 10/31/19
To: Lumber One Avon	Architect's project #: 616-18

The intent of this ASI is to amend the Project Documents to incorporate information which was previously not included but which is generally inferable from other information included in prior issues.

SCOPE:

In the process of reviewing the provided product submittals for the Apartment exterior finishes it was determined additional clarification to the exterior elevations might be helpful to assist the Contractor in better understanding the extent of specific finish colors. In addition, the Brick was changed to Stone (to match Contractor provided material submittal) and colors for the vinyl siding were revised to align with Owner requests.

This ASI includes updated exterior elevations and Finish Schedule and other documents as may be indicated.

Project Manual

APARTMENTS PROJECT MANUAL

Finish Schedule – 09 90 05

1. Exterior finish/material selections have been revised. All revisions color coded in **BLUE**. See revised schedule dated 10/31/19.

Plans & Details

APARTMENTS DRAWINGS

Sheet A201 – Building Elevations

1. Revised Elevation Legend & material tags on building elevations.

Issued By:

Joel Springer, CSI, CDT, CCCA, LEED-AP
Project Manager
Blumentals/Architecture

ATTACHMENTS:






Section 09 90 05 – Finish Schedule, REV. 10/31/19

Sheet A201 – Building Elevations, REV. 10/31/19

West Birch Apartments, Princeton, MN



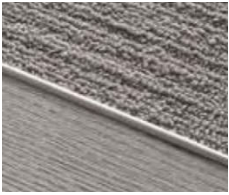



ID CODE	DESCRIPTION	LOCATION
INTERIOR FINISHES		
P1 	Product: Paint Mfr: Sherwin Williams Color: SW7043 Worldly Gray Finish: P1A: Eggshell (Walls)	Unit walls
P2 	Product: Paint Mfr: Sherwin Williams Color: SW7030 Anew Gray Finish: Eggshell	Field Color - All common area walls unless otherwise specified.
P3 	Product: Paint Mfr: Sherwin Williams Color: SW7018 Dovetail Finish: Eggshell	Accent Color (See finish floor plan for locations)
P4 	Product: Paint Mfr: Sherwin Williams Color: SW6235 Foggy Day Finish: Eggshell	Accent Color (See finish floor plan for locations)
P5 	Product: Paint Mfr: Sherwin Williams Color: SW9186 Caramelized Finish: Eggshell	Accent Color (See finish floor plan for locations)
P6 	Product: Paint Mfr: Sherwin Williams Color: SW7570 Egret White Finish: Satin Enamel	Painted trim & casing
P7 	Product: Paint Mfr: Sherwin Williams Color: SW7006 Extra White Finish: Flat (Ceilings) Eggshell (Walls)	All ceilings Maintenance Mechanical

<p>WT</p> 	<p>Wall & Ceiling Texture: Knock Down</p> <p>Knock Down Procedure: Apply as spatter as described except use material at heavy latex-paint consistency. After spattering surface, wait about 10-15 min., then very lightly flatten only tops of spatters with flat blade or flat hand trowel. Size of spatters depends on pressures used.</p> <p>Application: Spray Equipment: Pole gun, hopper, or Binks 7D, Binks 7E2 gun or equivalent Sample: Provide a 2' x 2' sample for approval prior to starting any work.</p>	
<p>C1</p> 	<p>Product: Carpet Broadloom Mfr: Shaw Contract Collection: Quiet Canvas Style: Sentiment 60775 Color: Emotion 00753 Contact: Kari Lyford 612.750.2381 kari.lyford@shawinc.com</p>	<p>Unit Bedrooms & bedroom closets.</p>
<p>C2</p> 	<p>Product: Carpet Tile Mfr: Shaw Contract Collection: Bright Work Style: Allure 59327 Color: Gloss 27761 Contact: Kari Lyford 612.750.2381 kari.lyford@shawinc.com</p>	<p>Corridors</p>
<p>C3</p> 	<p>Product: Carpet Tile Mfr: Shaw Contract Collection: Space Worx Style: Primary Tile 5T123 Color: Slate 17760 Contact: Kari Lyford 612.750.2381 kari.lyford@shawinc.com</p>	<p>Community Room, Office</p>
<p>C4</p> 	<p>Product: Carpet Tile Mfr: Shaw Contract Style: TruColours Tile 59368 Color: Slate 68481 Contact: Kari Lyford 612.750.2381 kari.lyford@shawinc.com</p>	<p>Corridor accent at unit entries</p>

<p>C5</p> 	<p>Product: Carpet Tile Mfr: Shaw Contract Collection: All Access Style: Path Tile 5T034 Color: Ebony 34500 Contact: Kari Lyford 612.750.2381 kari.lyford@shawinc.com</p>	<p>Vestibules</p>
<p>C6</p> 	<p>Product: Broadloom Carpet Mfr: Shaw Contract Collection: Bright Work Style: Amplify 5A176 Color: Gloss 27761 Contact: Kari Lyford 612.750.2381 kari.lyford@shawinc.com</p>	<p>Stairs</p>
<p>LVT1</p> 	<p>Product: Luxury Vinyl Plank – Glue Down Mfr: Shaw Contract Collection: Terrain II Style: Terrain II 12 Mil 0453V Alternate: Terrain II 20 Mil 0454V Color: Pirch 00684 Plank Size: 6” x 48” x 2.5mm Wear Layer: 12 Mil. / Alt: 20mil Contact: Kari Lyford 612.750.2381 kari.lyford@shawinc.com</p>	<p>Unit all rooms except bedrooms and bedroom closets</p>
<p>LVT2</p> 	<p>Product: Luxury Vinyl Plank – Glue Down Mfr: Shaw Contract Collection: Terrain II Style: Terrain II 20 Mil 0454V Color: Aspen 05019 Plank Size: 6” x 48” x 2.5mm Wear Layer: 20mil Contact: Kari Lyford 612.750.2381 kari.lyford@shawinc.com</p>	<p>Common areas – Lobby, Community Room, Nurse</p>
<p>SV1</p> 	<p>Product: Sheet Vinyl Mfr: Mannington Commercial Collection: Paradigm Style: Intersect Color: Precedent PD117</p>	<p>Laundry Room</p>




SECTION 09 90 05
Finish schedule

REVISIONS: 09/25/19, 10/31/19

<p>VB1</p> 	<p>Product: Vinyl Wall Base Mfr: Johnsonite Style: 4" Traditional Cove Color: Zephyr #31</p>	<p>Unit wall base – exception bedrooms & bedroom closet</p> <p>Laundry Room</p>
<p>VB2</p> 	<p>Product: Vinyl Wall Base Mfr: Johnsonite Style: 4" Traditional Cove Color: Burnt Umber #63</p>	<p>Wall base for</p> <ul style="list-style-type: none"> - Maintenance - Mechanical
<p>VT1</p> 	<p>Product: Vinyl Floor Transition Mfr: Tandus Collection: Tandus/Metal Edge Collection Color: TBD Item: Transition Strip Size: ME002</p>	<p>Floor transition between LVT & Carpet where that condition exists.</p>
<p>T1</p> 	<p>Product: Porcelain Field Tile Mfr: Daltile Collection: Timber Glen Color: Thatch Size: 12" x 24" Grout: Mapei – Pewter #02</p>	<p>Women's & Men's Restroom – Floor + Hall at drinking fountains.</p>
<p>T2</p> 	<p>Product: Porcelain Wall Tile Mfr: Daltile Collection: Modern Dimensions Color: Matte Artic White Size: 4" x 8" Grout: Mapei – Pewter #02</p>	<p>Women's & Men's Restrooms – Wall Tile</p>
<p>T3</p> 	<p>Product: Porcelain Wall Tile Mfr: American Olean Collection: Strategies Mosaics Color: Metal Method ST73 Size: 13" x 13" Sheet Grout: Mapei – Pewter #02</p>	<p>Community Room Kitchenette Backsplash</p>




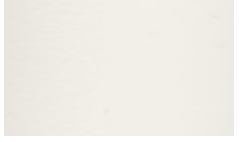


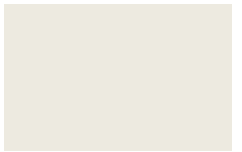
SECTION 09 90 05
Finish schedule

REVISIONS: 09/25/19, 10/31/19

<p>T4</p> 	<p>Product: Porcelain Wall Tile Mfr: Daltile Collection: Modern Dimensions Color: Artic White – Semi Gloss Size: 4” x 4” Grout: Mapei – White</p>	<p>Unit #02 – Roll-In Shower Walls</p>
<p>MT1</p> 	<p>Product: Metal Trim Mfr: Schluter Systems Item: Dilex Finish: Brushed Nickel Anodized Aluminum</p>	<p>Women’s & Men’s Restroom – Cove between walls & floor</p>
<p>MT2</p> 	<p>Product: Metal Trim Mfr: Schluter Systems Item: Rondec Finish: Brushed Nickel Anodized Aluminum</p>	<p>Women’s & Men’s Restroom –Trim to be used at exposed wall tile edges. – Edges where tile meets painted gyp. bd.</p>
<p>MT3</p> 	<p>Product: Metal Transition Mfr: Schluter Systems Item: Schiene Finish: Brushed Nickel Anodized Aluminum</p>	<p>Edge protection between carpet and tile in all areas where that condition exists.</p>
<p>SC1</p>	<p>Product: Sealed Concrete</p>	<p>Utility/Maintenance/ Mechanical Rooms</p>
<p>PL1</p> 	<p>Product: Plastic Laminate Mfr: Wilsonart Color: Sierra Cascade 5005 Finish: 38 Fine Velvet Texture (Standard)</p>	<p>Unit Kitchen countertops</p>
<p>PL2</p> 	<p>Product: Plastic Laminate Mfr: Formica Color: Mineral Spa 6920 Finish: Matte 58</p>	<p>Laundry Room folding table</p>






SECTION 09 90 05
Finish schedule

REVISIONS: 09/25/19, 10/31/19

<p>PL3</p> 	<p>Product: Plastic Laminate Mfr: Formica Color: Espresso Pear 5489-NT Finish: Naturelle</p>	<p>Restroom Vanity valance & protection panels.</p>
<p>SS1</p> 	<p>Product: Quartz Mfr: Silestone Color: Gray Expo Edge Style: Eased Edge</p>	<p>Community Room Kitchenette Countertop</p>
<p>SS2</p> 	<p>Product: Quartz Mfr: Silestone Color: Blanco Maple Edge Style: Eased Edge Bowl Color: White</p>	<p>Women's & Men's Restroom – Vanity Tops</p>
<p>CM1</p> 	<p>Product: Cultured Marble Mfr: Central Marble Products, Inc. Color: Pure White (145) Edge Style: Eased Edge Integral Bowl: Same Color Finish: Gloss</p>	<p>Unit Bathroom vanity tops</p>
<p>CM2</p> 	<p>Product: Cultured Marble Mfr.: Central Marble Products, Inc. Style: Pure White (145) Edge Style: Eased Edge Finish: Matte</p>	<p>Windowsills</p>
<p>WB1</p> 	<p>Product: Wood Base & Door Trim Mfr: TBD Profile: Square Color: Color to closely match Doors & LVT1 **Submit samples for architect/designer approval.**</p>	<p>Unit Bedroom wall base and door trim</p>
<p>WB2</p> 	<p>Product: Wood Base & Trim Mfr: TBD Profile: Square Wood: Poplar 4" Color: Primed & Painted P6</p>	<p>Common area wall base & unit entry trim</p>

SECTION 09 90 05
Finish schedule

REVISIONS: 09/25/19, 10/31/19

<p>CAB1</p> 	<p>Product: Cabinets Mfg.: Smart Cabinetry Style: Squire (Shaker, Standard Overlay) Wood: Maple Finish: Pecan (Or approved equal by Architect/Designer)</p>	<p>Unit kitchen cabinets and bathroom vanities</p>
<p>CAB2</p> 	<p>Product: Cabinets Mfg.: Smart Cabinetry Style: Freeport (Flat, Full Overlay) Wood: Maple Finish: Coffee (Or approved equal by Architect/Designer)</p>	<p>Community Room Kitchen Cabinets</p>
<p>WP1</p> 	<p>Product: Wood Panel Wood: Maple Finish: Stain to match CAB1</p>	<p>Finished wood panel at kitchen peninsula</p>
<p>HW1</p>  <p>(or approved equal)</p>	<p>Product: Hardware – Cabinet 96mm Pull Manufacturer: Jamison Collection by Charles McMurray Model: J444-SN Finish: Satin Nickel CTC: 3.75" Length: 4.25"</p>	<p>Unit & Common areas cabinet doors & drawers</p>
<p>HW1</p>  <p>(or approved equal)</p>	<p>Product: Hardware – Cabinet 96mm Pull Manufacturer: Berenson Hardware Collection: Advantage Plus - 7 Style: Uptown Appeal Item #: 9395-1BPN-P Finish: Brushed Nickel CTC: 96mm Length: 4 1/16"</p>	<p>Unit & Common areas cabinet doors & drawers</p>
<p>BL1</p>	<p>Product: Window Blinds Manufacturer: SWF contract Style: 2" Composite Color: TBD from color selection submittals</p>	

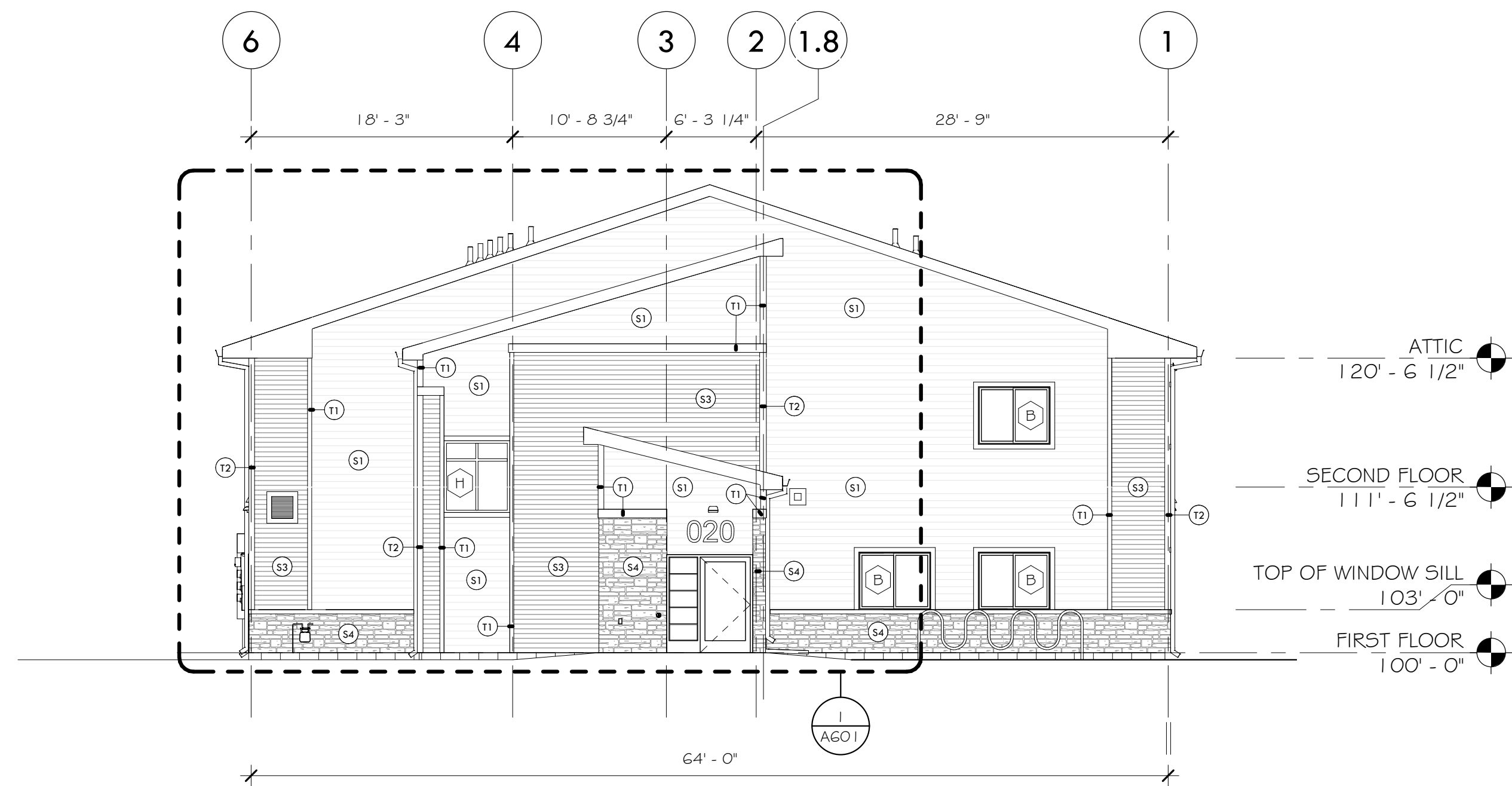
DR1	<p>Product: Prefinished Interior Doors</p> <p>Note: GC to submit physical color samples for color selection & approval.</p> <ul style="list-style-type: none"> - Color/Finish to be close in color to CAB1 	Common area & unit doors
MF1	<p>Product: Prefinished Metal Door Frames</p> <p>Note: GC to submit physical color samples for color selection & approval.</p> <ul style="list-style-type: none"> - Color to be close to P7. 	Common area & unit entry door frames

EXTERIOR FINISHES		
<p>P8</p> 	<p>Product: Exterior Paint Mfr: Sherwin Williams Color: SW7668 March Wind (To match S1) Finish: Flat</p>	Paint for smooth siding panels behind electrical meters that fall within vinyl siding (S1)
<p>P9</p> 	<p>Product: Exterior Paint Mfr: Sherwin Williams Color: SW7048 Urbane Bronze Finish: Semi-Gloss</p>	Exterior metal doors and frames
<p>S1</p> 	<p>Product: Vinyl Lap Siding Mfr: Certainteed - Monogram Exposure: Double 5" Color: Sterling Gray</p>	Exterior panel siding – Main Field Color (See Exterior Elevations)
<p>S2</p> 	<p>Product: Vinyl Lap Siding Mfr: Certainteed - Monogram Exposure: Double 5" Color: Charcoal Gray</p>	Exterior lap siding – Second Field Color (See Exterior Elevations)
<p>S3</p> 	<p>Product: Vinyl Lap Siding Mfr: Certainteed - Monogram Exposure: Double 4" Color: Pacific Blue</p>	Exterior Lap Siding – Accent Color (See Exterior Elevations)
<p>S4</p> 	<p>Product: Stone Panel Siding Mfr: Versetta Stone Collection: Ledgestone Color: Sterling</p>	Exterior Stone Wainscot/Accent (See Exterior Elevations)

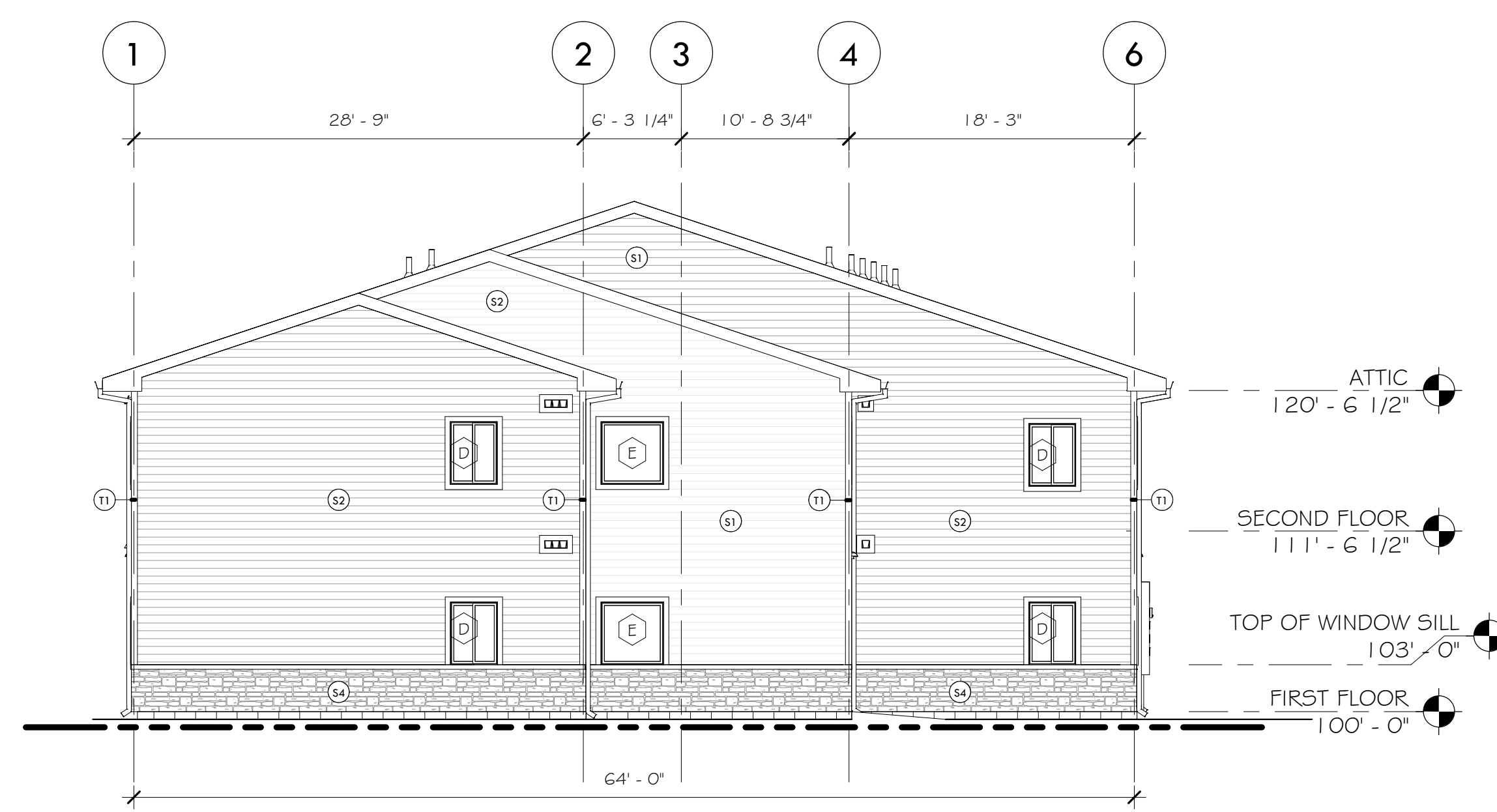
SECTION 09 90 05
Finish schedule

REVISIONS: 09/25/19, 10/31/19

<p>T1</p> 	<p>Product: Metal Clad Trim Mfr: EDCO Color: Glacier White</p>	<p>Vertical & Horizontal Trim at Doors, Windows, Siding Transitions & Building Corners (See Exterior Elevations)</p>
<p>T2</p> 	<p>Product: Metal Clad Trim Mfr: EDCO Color: Classic Blue</p>	<p>Corner trim at siding S3 (Pacific Blue) Only (See Exterior Elevations)</p>
<p>R1</p> 	<p>Product: Roofing Shingles Mfr: GAF Collection: Timberline HD Color: Pewter Gray</p>	<p>Roofing Shingles</p>
<p>F1</p> 	<p>Product: Metal for Fascia & Soffits Mfr: EDCO Color: Glacier White</p>	<p>Metal for Fascia & Soffits</p>
<p>W1</p> 	<p>Product: Windows Mfr: ThermoTech Collection: Classic Series Color: White</p>	<p>Windows</p>
<p>AS1</p> 	<p>Product: Aluminum Storefront Systems Mfr: EFCO Finish: Clear Anodized Hardware Finish: Schlage 626</p>	<p>Exterior Aluminum Storefront Systems</p>



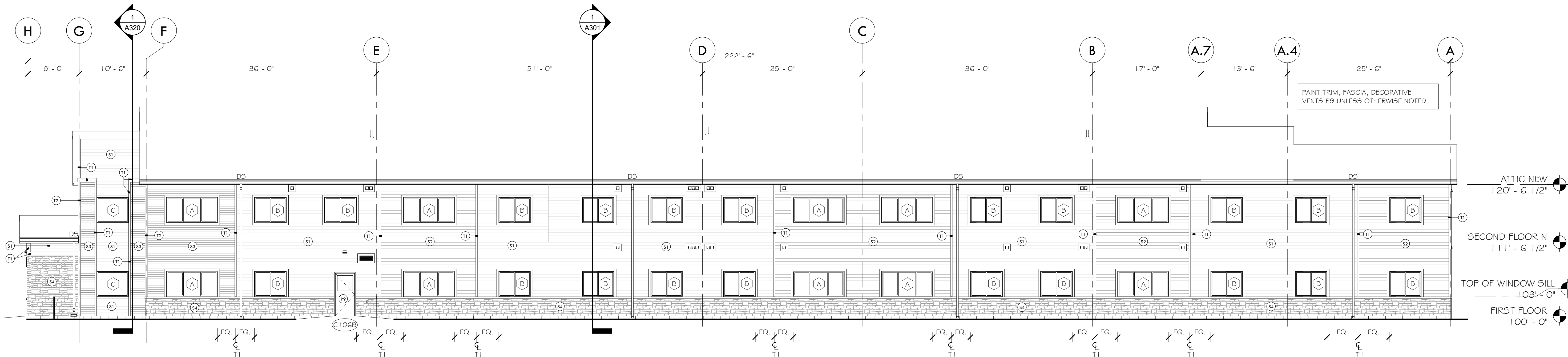
4 NORTH ELEVATION
1/8" = 1'-0"



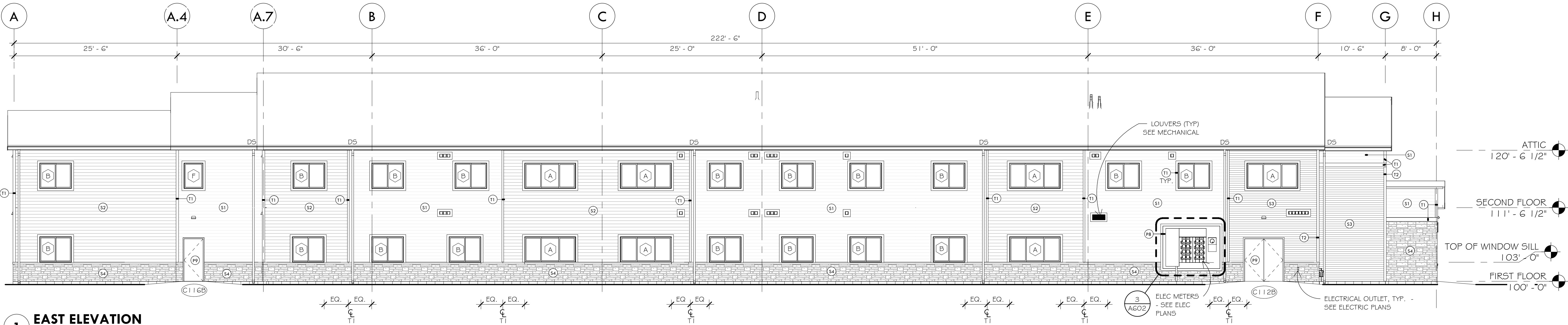
3 SOUTH ELEVATION
1/8" = 1'-0"

ELEVATION LEGEND

- (Sx) EXTERIOR MATERIAL TAG
- (Tx) SIDING / TRIM TYPE - SEE BELOW
- S1 SIDING TYPE 1 - SEE 09 90 05 FINISH SCHEDULE
- S2 SIDING TYPE 2 - SEE 09 90 05 FINISH SCHEDULE
- S3 SIDING TYPE 2 - SEE 09 90 05 FINISH SCHEDULE
- S4 SIDING TYPE 4 - SEE 09 90 05 FINISH SCHEDULE
- T1 TRIM TYPE 1 - SEE 09 90 05 FINISH SCHEDULE
- T2 TRIM TYPE 2 - SEE 09 90 05 FINISH SCHEDULE
- (X) WINDOW TAG - SEE WINDOW TYPES
- (X) DOOR TAG - SEE DOOR TYPES



2 WEST ELEVATION
1/8" = 1'-0"



1 EAST ELEVATION
1/8" = 1'-0"



**Blumentals
Architecture**

1600 Marshall Street NE, Suite 1
Minneapolis, MN 55413
612/331-2222
612/331-2224 FAX
info@blumentals.com

SIGNATURES

I hereby certify that this plan, specification, or report was prepared by me or under my direct supervision and that I am a duly Licensed Architect under the laws of the State of

MINNESOTA 06/07/19
sign date
JAMES L. MOY 27036
reg. no.

6/30/2020
reg. exp. date

PROJECT INFO

Commission No.
B/A: 616-18
Drawn By:
HD
Issue Date
06/07/19

△ SUBMITTALS / REVISIONS

- 02/16/18 MHFA REVIEW - SD
- 04/20/18 50% CD
- 06/21/18 90% CD
- 08/24/18 100% MHFA REVIEW
- 02/05/19 ISSUED FOR CITY REVIEW
- 02/21/19 ADDENDUM #2
- 1 06/07/19 ISSUED FOR CONSTRUCTION
- 3 09/10/19 RFI #01
- 9 10/31/19 ASI#04

SCALE
As indicated

West Birch Apartments

1103 West Branch Street
Princeton, MN

BUILDING ELEVATIONS



A201