



1600 Marshall St NE, Suite 1
Minneapolis, MN 55413
www.blumentals.com

(p) (612) 331-2222
(f) (612) 331-2224
info@blumentals.com

Jim Moy, AIA
Principal/President & CEO

Andy Swartz, AIA
Principal/Vice President

Architects Supplemental Instruction (ASI)

Project: West Birch Apartments and Townhomes	ASI #: 06
Owner: West Birch Estates of Princeton	Date of Issuance: 11/01/19
To: Lumber One Avon	Architect's project #: 616-18

The intent of this ASI is to amend the Project Documents to incorporate information which was previously not included but which is generally inferable from other information included in prior issues.

SCOPE:

Revise Detail 5/A310 to indicate closed cell spray foam insulation at rim boards in lieu of currently indicated kraft faced batt insulation. This is a no-cost item as Lumber One has indicated the closed cell insulation is already in their pricing.

Project Manual

APARTMENTS PROJECT MANUAL

No Changes

Plans & Details

APARTMENTS DRAWINGS

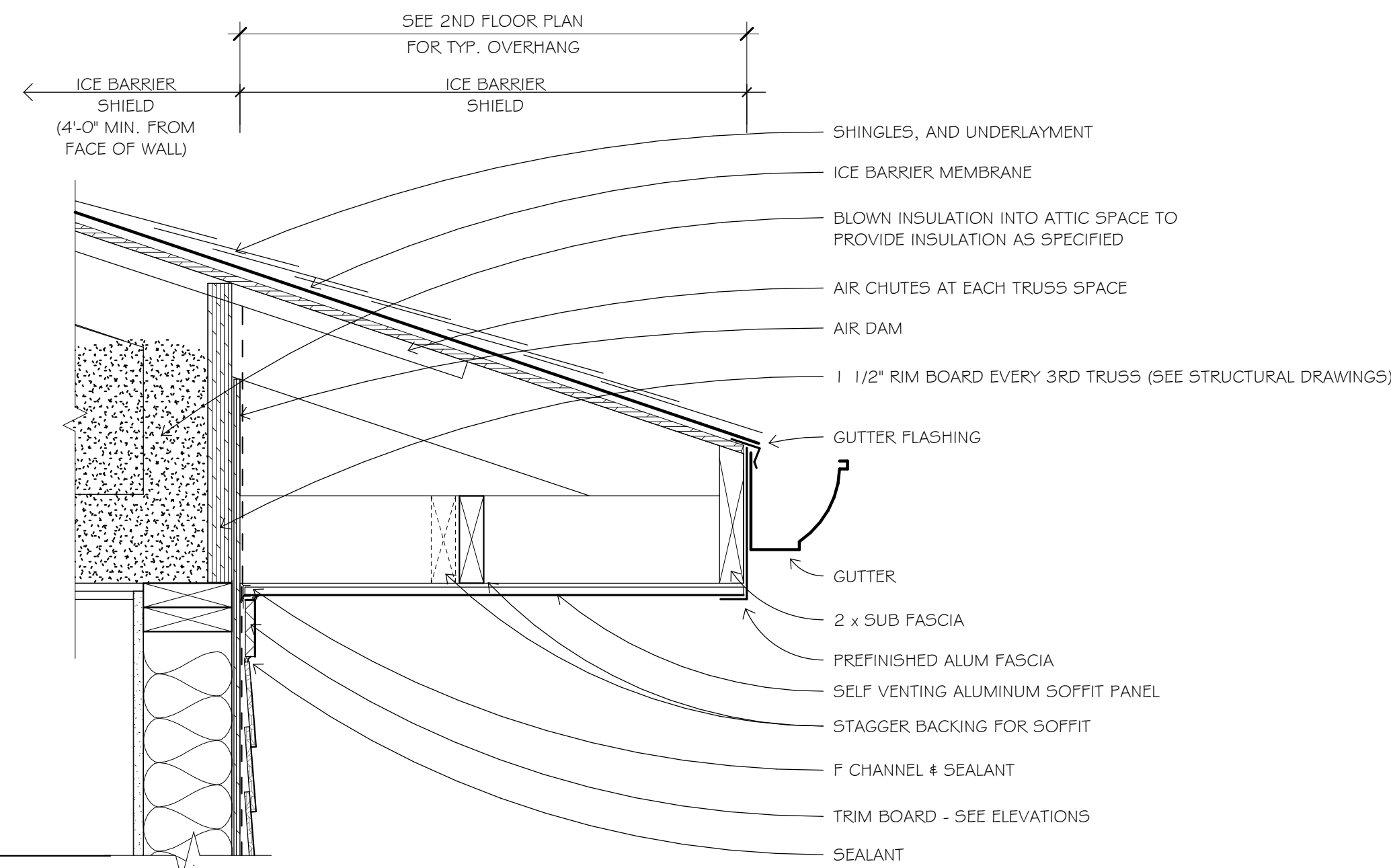
A310 – Revise Detail 5; Label Detail 7 (was previously part of Detail 5)

Issued By:

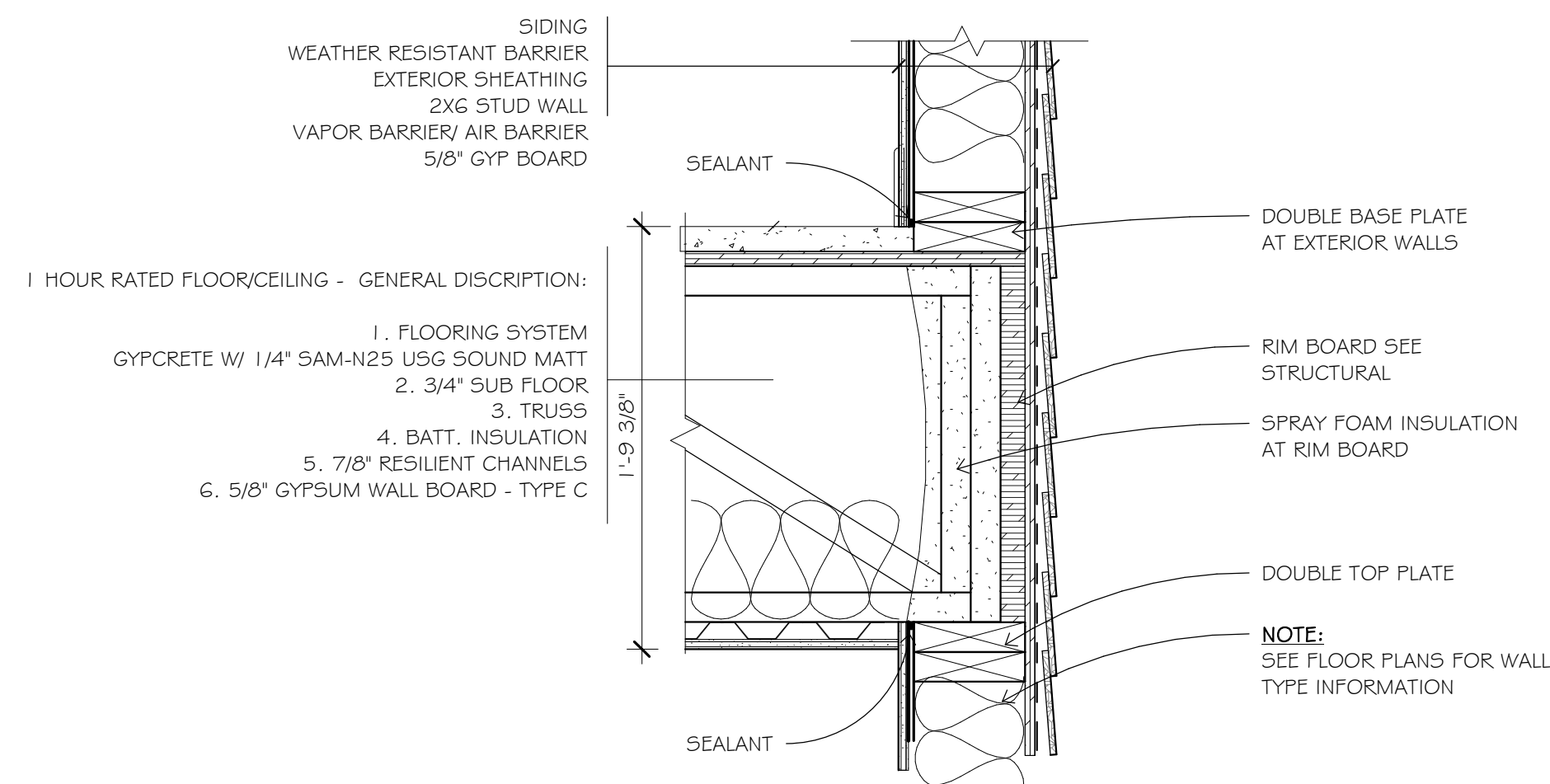
Joel Springer, CSI, CDT, CCCA, LEED-AP
Project Manager
Blumentals/Architecture

ATTACHMENTS:

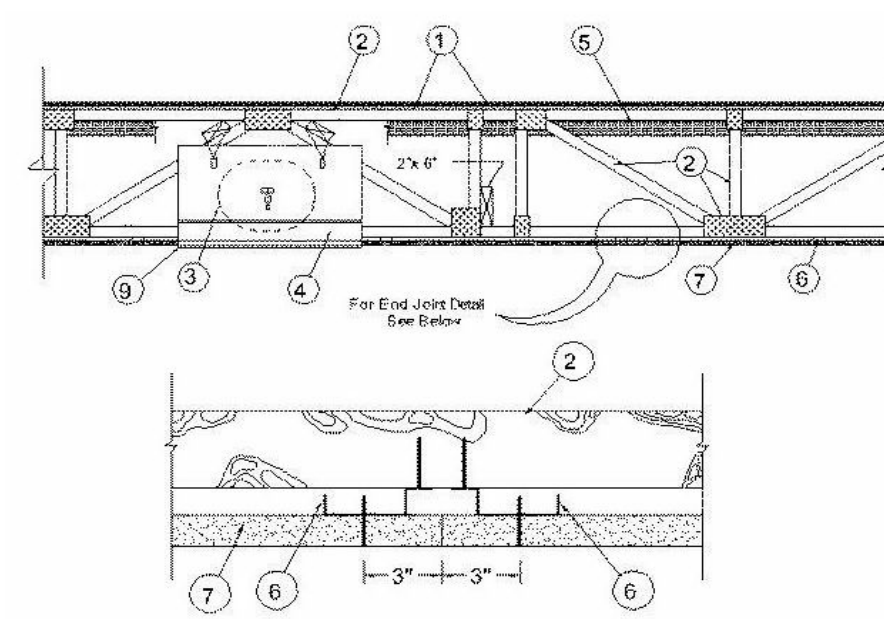
A310



6 ROOF TO WALL CONNECTION
1 1/2" = 1'-0"

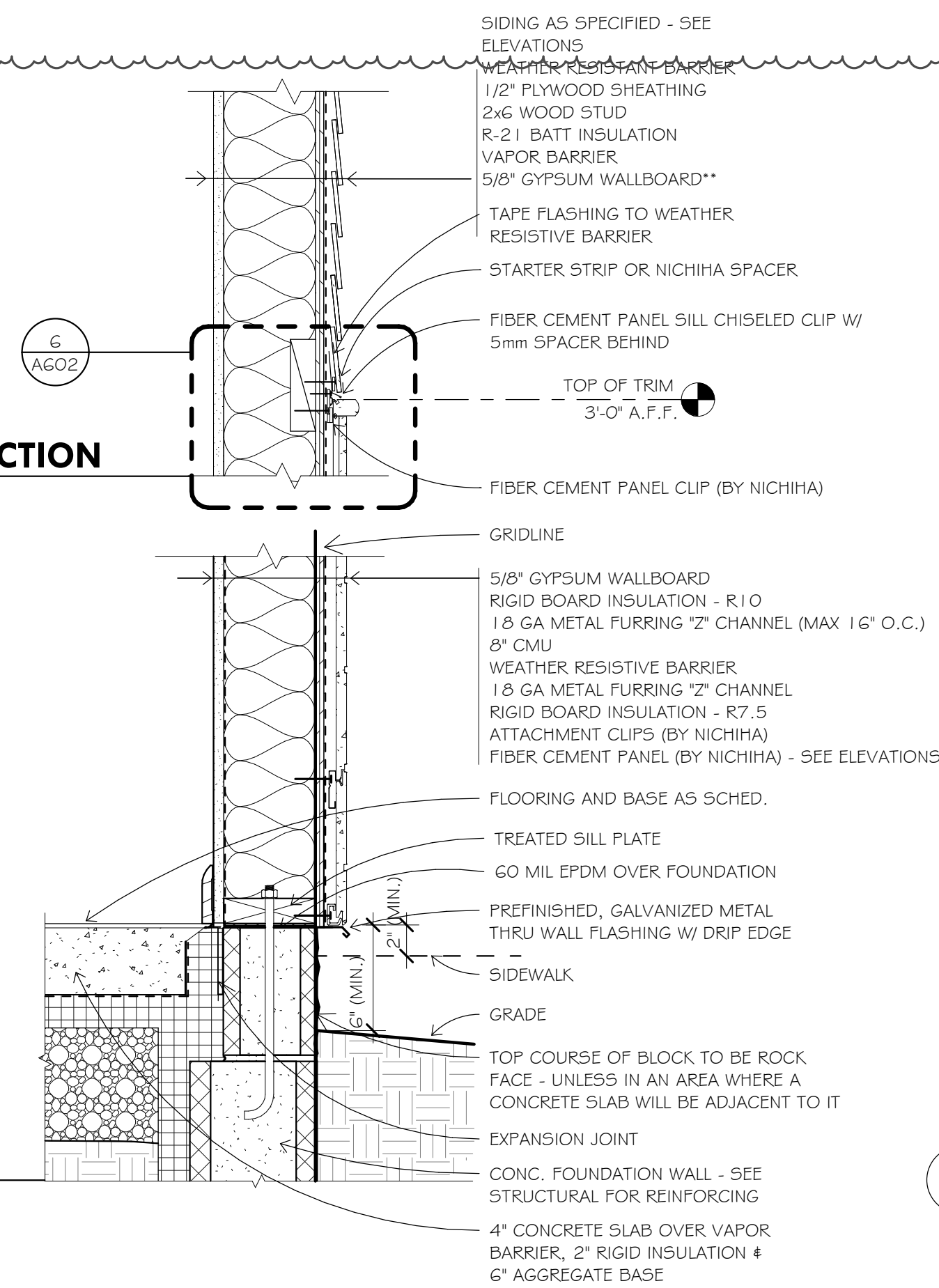


1 HOUR RATED FLOOR/CEILING ASSEMBLY
UL Design No. L516

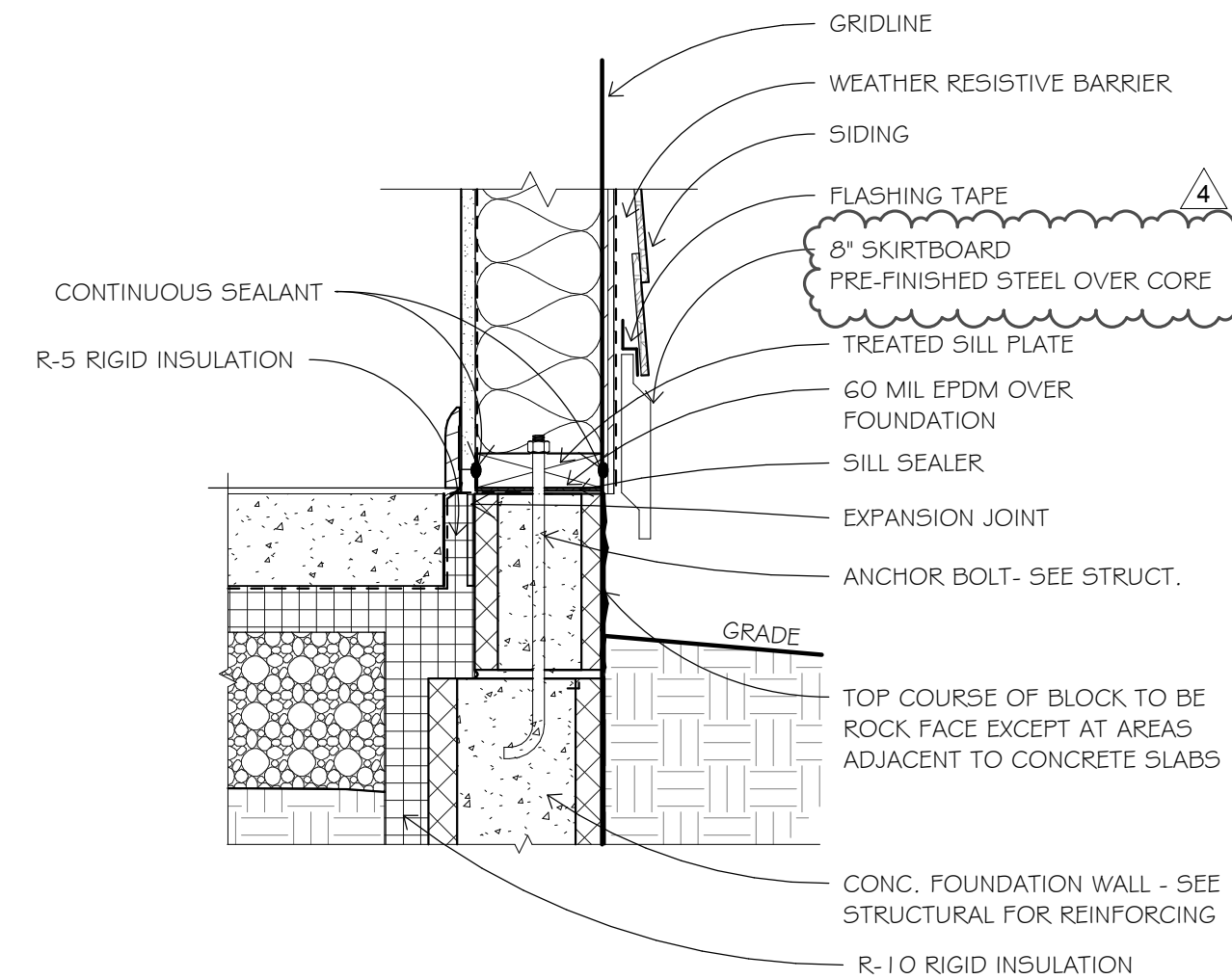


7 STANDARD FLOOR ASSEMBLY
1 1/2" = 1'-0"

5 FLOOR JOISTS @ EXTERIOR WALL
1 1/2" = 1'-0"

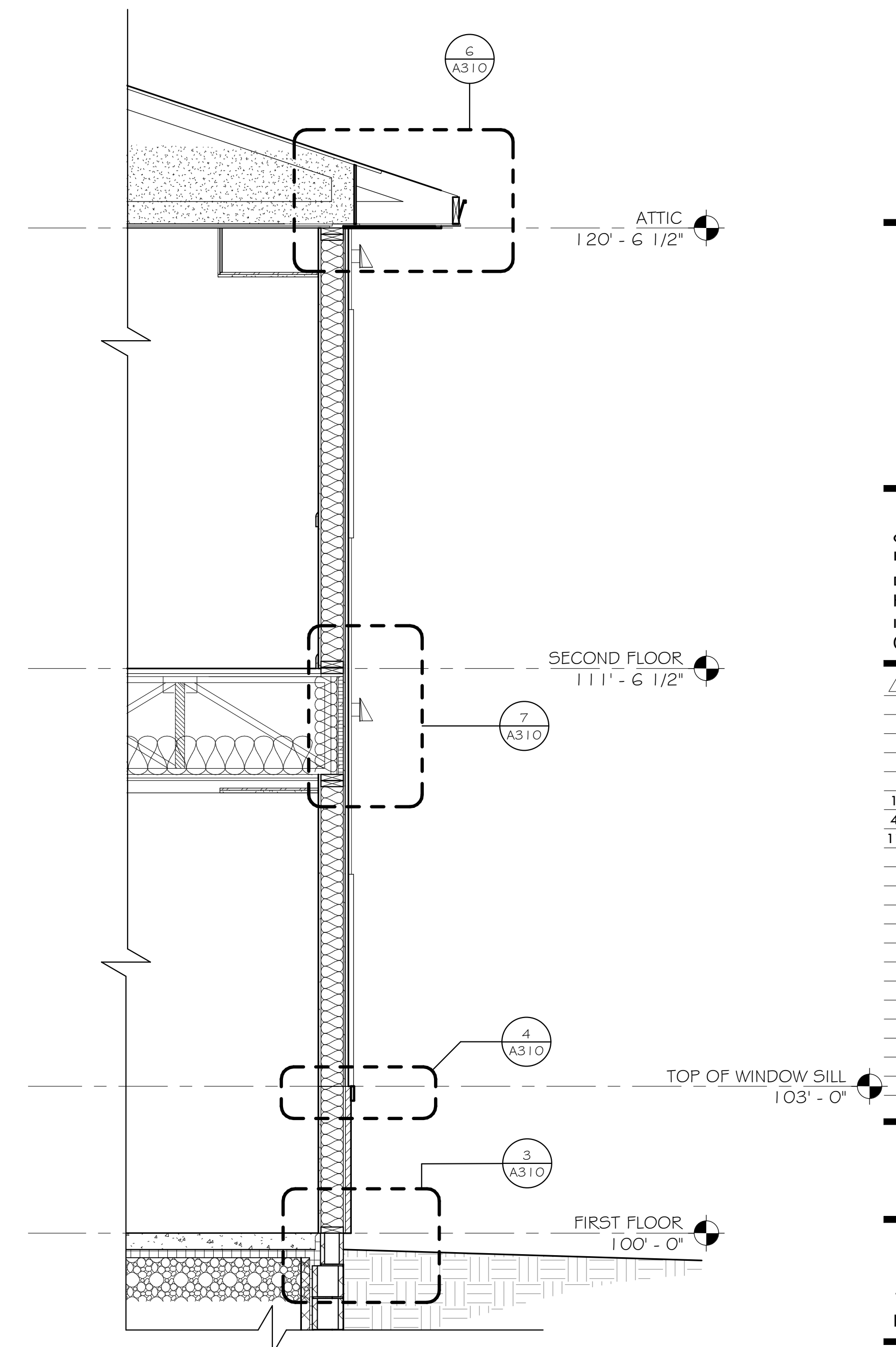


4 SIDING TO FIBER CEMENT PANEL CONNECTION
1 1/2" = 1'-0"



2 WALL TO FOUNDATION CONNECTION.
1 1/2" = 1'-0"
@ SIDING

3 WALL TO FOUNDATION CONNECTION
1 1/2" = 1'-0"
@ NICHIIHA PANEL



1 WALL SECTION - 2
1/2" = 1'-0"

I hereby certify that this plan, specification, or report was prepared by me or under my direct supervision and that I am a duly Licensed Architect under the laws of the State of

MINNESOTA 06/07/19 sign date

JAMES L MOY 27036 reg no.

6302020 reg. exp. date

PROJECT INFO

Commission No. B/A 616-18

Drawn By: HD

Issue Date: 06/07/19

SUBMITTALS / REVISIONS

04/20/18	50% CD
06/21/18	90% CD
08/24/18	100% MHFA REVIEW
02/05/19	ISSUED FOR CITY REVIEW
02/21/19	ADDENDUM #2
1	06/07/19 ISSUED FOR CONSTRUCTION
4	09/25/19 ASI #01
11	11/04/19 ASI #06

SCALE As indicated

West Birch Apartments

1103 West Branch Street
Princeton, MN

WALL SECTIONS