

2 BED (1 BATH) TYPE "A"
 1,061 S.F. 1 BATH + 460 S.F. GARAGE
 1,061 S.F. TOTAL + 460 S.F. GARAGE

2 BED (3 BATHS)
 1,288 S.F. 1/2 BATH MAIN + 216 S.F. GARAGE
 581 S.F. 1 3/4 BATH UP
 1,315 S.F. TOTAL + 216 S.F. GARAGE

2 BED (3 BATHS)
 1,288 S.F. 1/2 BATH MAIN + 216 S.F. GARAGE
 581 S.F. 1 3/4 BATH UP
 1,315 S.F. TOTAL + 216 S.F. GARAGE

2 BED (1 BATH) TYPE "A"
 1,061 S.F. 1 BATH + 460 S.F. GARAGE
 1,061 S.F. TOTAL + 460 S.F. GARAGE

FIRST FLOOR PLAN - BLDG. "4-3"
 SCALE: 1/4" = 1'-0" (4) PLEX 5,013 S.F.

PLOTTED: 11-14-19 FILE: 19062P COM: 3
 Project No. 19022
 Submittal Date: 11-14-19
 Document Set: BID SET
 A101

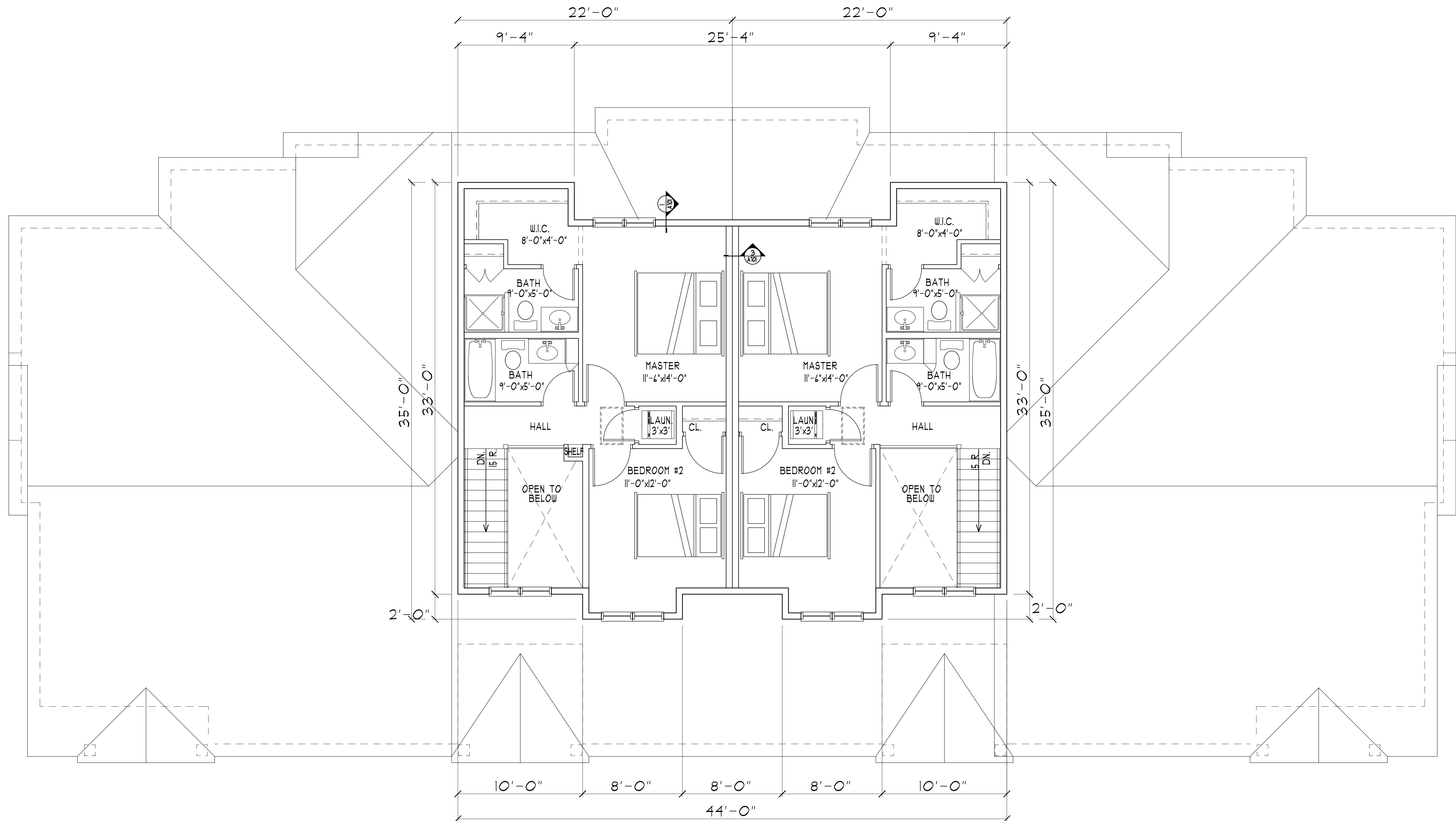
DEVELOPER: **KB KELLER/BAARTMAN** PERFORMERS
 RED WING TOWN HOMES BLDG. 4-3
 RED WING, MN (651) 388-0000
 RED WING, MN

PROPOSED: **REDF WING TOWN HOMES BLDG. 4-3**
 RED WING, MN (651) 388-0000
 RED WING, MN

REVISIONS COMMENTS
 REVISIONS COMMENTS

THESE DOCUMENTS ARE NOT VALID FOR BUILDING PERMIT UNLESS SIGNED IN INK AND OVER SEALED. COPIES ARE NOT VALID. I HEREBY CERTIFY THAT THIS PLAN, SPECIFICATION OR REPORT WAS PREPARED BY ME OR UNDER MY DIRECT SUPERVISION AND THAT I AM A DULY LICENSED ARCHITECT UNDER THE LAWS OF THE STATE OF MINNESOTA. Date: 11/14/19 # 2298 Name: MORHAN E. COLE, Signature

COLE GROUP
 ARCHITECTS LLC
 214 Park Avenue South
 Suite 102
 Saint Cloud, MN 56301
 (320) 454-4570
 www.colegrouparchitects.com



2 BED (3 BATHS)

128 S.F. 1/2 BATH MAIN + 2 1/4 S.F. GARAGE
 581 S.F. 1 3/4 BATH UP
 1315 S.F. TOTAL + 2 1/4 S.F. GARAGE

2 BED (3 BATHS)

128 S.F. 1/2 BATH MAIN + 2 1/4 S.F. GARAGE
 581 S.F. 1 3/4 BATH UP
 1315 S.F. TOTAL + 2 1/4 S.F. GARAGE

SECOND FLOOR PLAN - BLDG. "4-3"
 SCALE: 1/4" = 1'-0" (4) PLEX 1,408 S.F.

PLOTTED: 11-14-19 FILE: 19062P COW: 3

Project No. 19042
 Submittal Date: 11-14-19
 Document Set: BID SET

REVISIONS COMMENTS

PROPOSED:

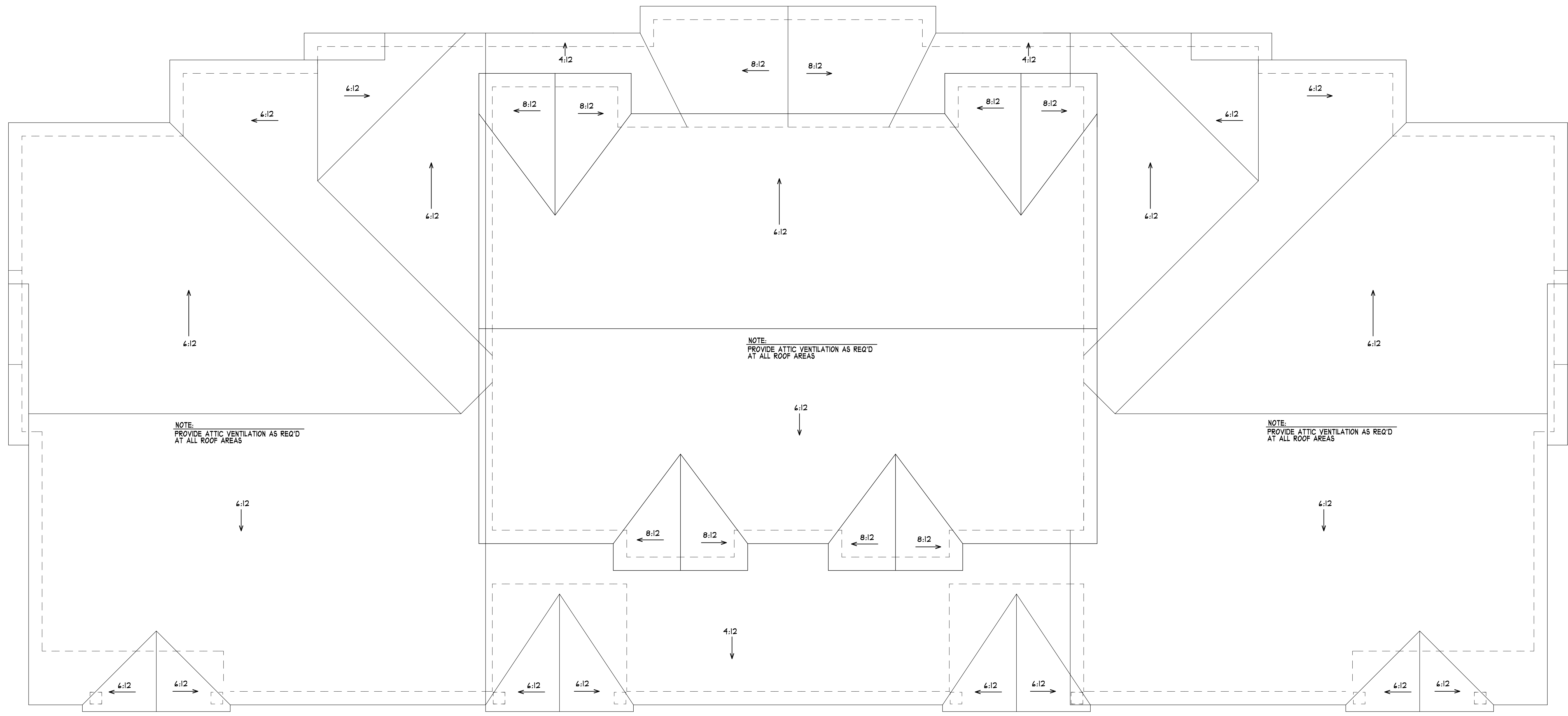
RED WING TOWN HOMES BLDG. 4-3
 RED WING, MN
 (651) 388-0000

DEVELOPER: KB KELLER/BAARTMAN

These documents are not valid for building permit unless signed in ink and over sealed. Copies are not valid. I hereby certify that this plan, specification or report was prepared by me or under my direct supervision and that I am a duly licensed Architect under the laws of the state of MINNESOTA. Date: 11/14/19 \$ 2298 Name: NORMAN E. COLE Signature:

COLE GROUP ARCHITECTS LLC
 214 Park Avenue South
 Suite 102
 Minneapolis, MN 55401
 (612) 454-4470
 www.colegrouparchitects.com

A102



ROOF PLAN - BLDG. "4-3"
 SCALE: 1/4" = 1'-0"

PLOTTED: 11-14-19 FILE: 190622 COM: 3

Project No.
 190622
 Submittal Date:
 11-14-19
 Document Set:
 BID SET

REVISIONS COMMENTS

REVISIONS COMMENTS

REVISIONS COMMENTS

DEVELOPER:

KB KELLER/BAARTMAN
 PROFESSIONALS
 RED WING, MN
 (651) 388-0000

PROPOSED:

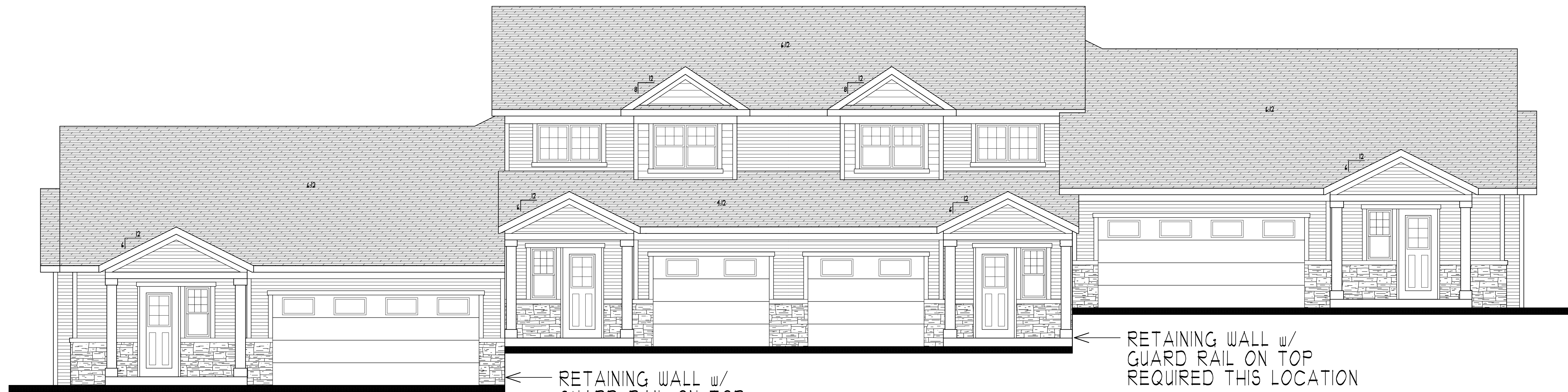
RED WING
 TOWN HOMES BLDG. 4-3
 RED WING, MN

COLE GROUP
 ARCHITECTS LLC

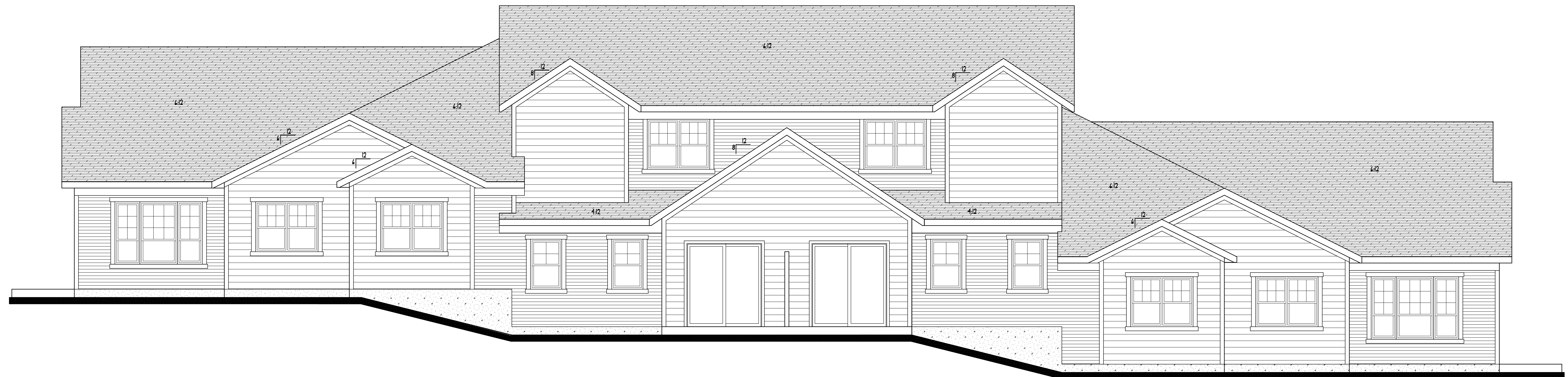
216 P.O. Box
 Avenue South
 Saint Cloud, MN 56301
 (920) 454-4810
 www.colegrouparchitects.com

These documents are not valid for bidding permit, unless signed in ink and over sealed. Copies are not valid. I hereby certify that the plan, specification or report was prepared by me or under my direct supervision and that I am a duly licensed Architect under the laws of the state of MINNESOTA. Date: 11/14/19 Name: NORMAN E. COLE, Signature: [Signature]

A103



FRONT ELEVATION - BLDG. "4-3"
SCALE: 1/4" = 1'-0"



REAR ELEVATION - BLDG. "4-3"
SCALE: 1/4" = 1'-0"

DEVELOPER: **KB KELLER/BAARTMAN** PERFORMERS
 RED WING, MN (651) 388-0000
 TOWN HOMES BLDG. 4-3
 RED WING, MN

PROPOSED:
 RED WING
 TOWN HOMES BLDG. 4-3
 RED WING, MN

REVISIONS COMMENTS
 REVISIONS COMMENTS

Project No. 19042
 Submit Date: 11-14-19
 Document Set: BID SET

A501

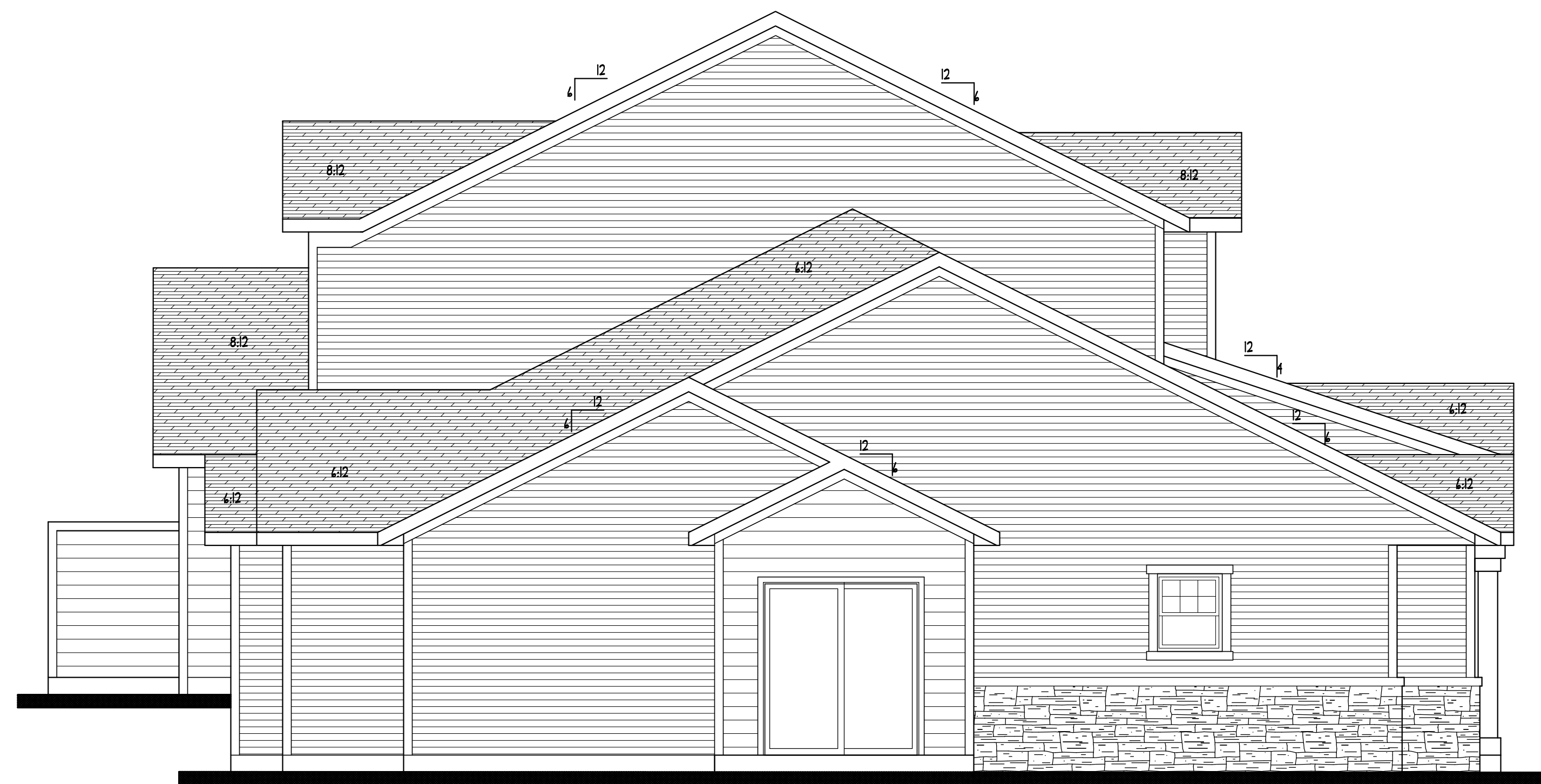
These documents are not valid for building permit unless signed in ink and over sealed. Copies are not valid.
 I hereby certify that this plan, specification or report was prepared by me or under my direct supervision and that I am a duly licensed Architect under the laws of the state of MINNESOTA
 Date: 11/14/19
 Name: MORRIS E. COLE Signature: [Signature]

COLE GROUP ARCHITECTS LLC
 216 Park Avenue South
 Suite 1024
 Minneapolis, MN 55430
 (612) 454-4670
 www.colegrouparchitects.com

PLOTTED: 11-14-19 FILE: 19062E COM: 3



RIGHT END ELEVATION - BLDG. "4-3"
SCALE: 1/4" = 1'-0"



LEFT END ELEVATION - BLDG. "4-3"
SCALE: 1/4" = 1'-0"

PLOTED: 11-14-19 FILE: 19062E COM: 3

Project No.
19062
Submittal Date:
11-14-19
Document Set:
BID SET

A502

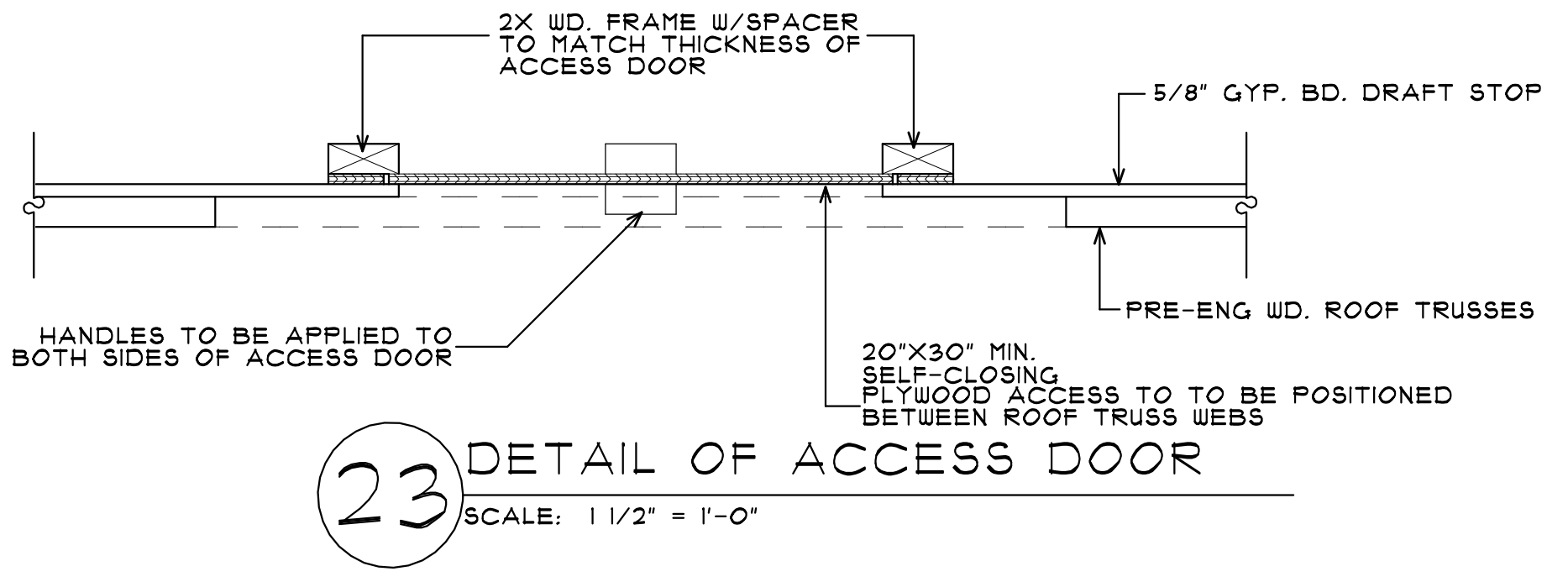
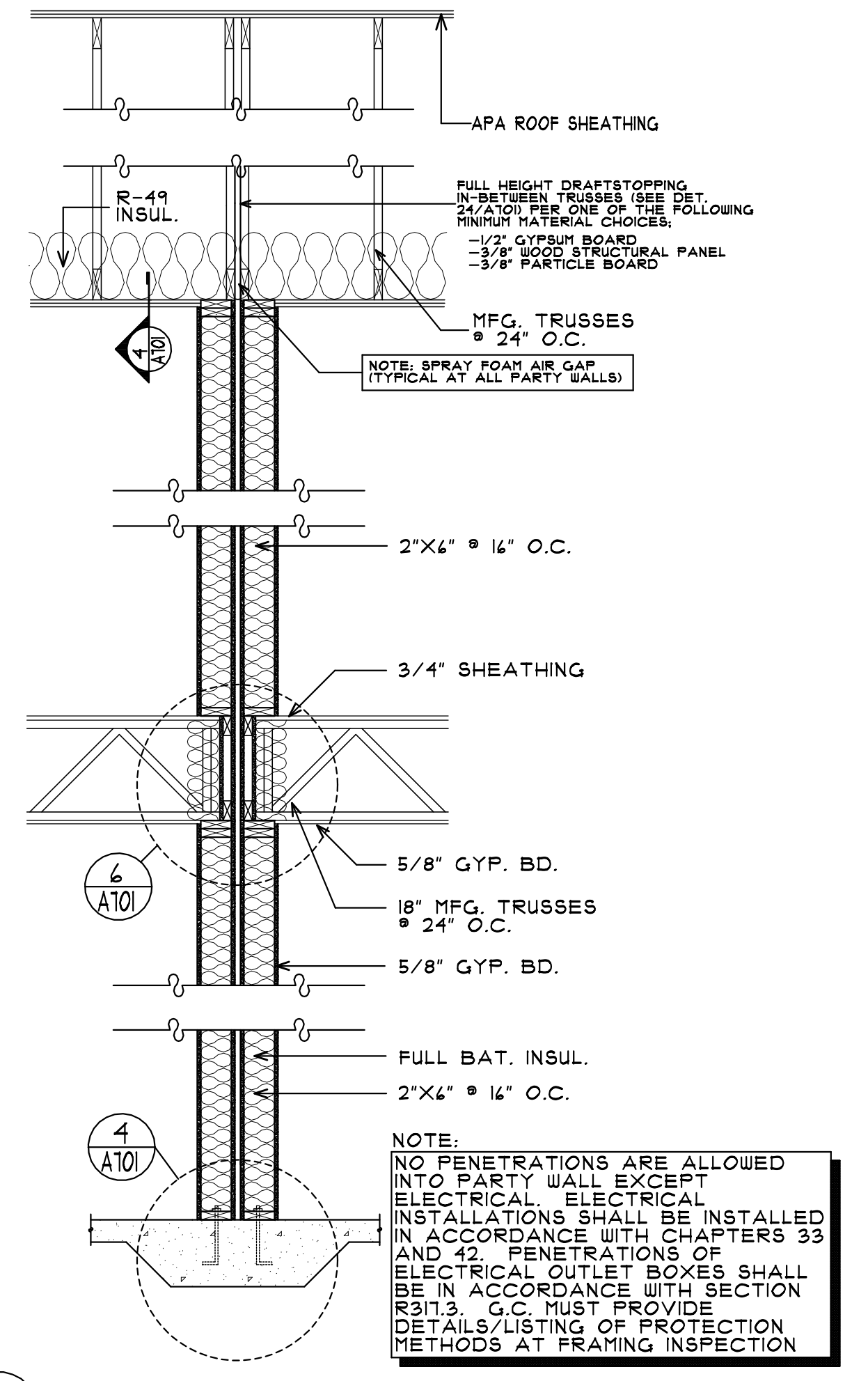
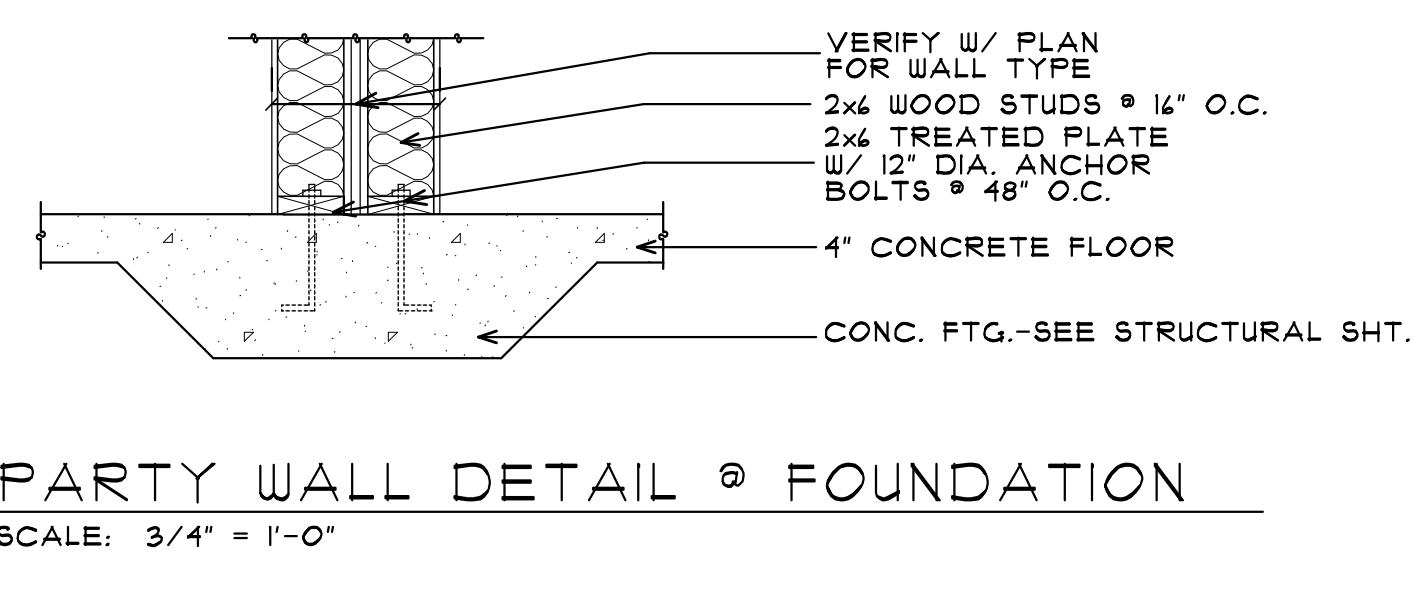
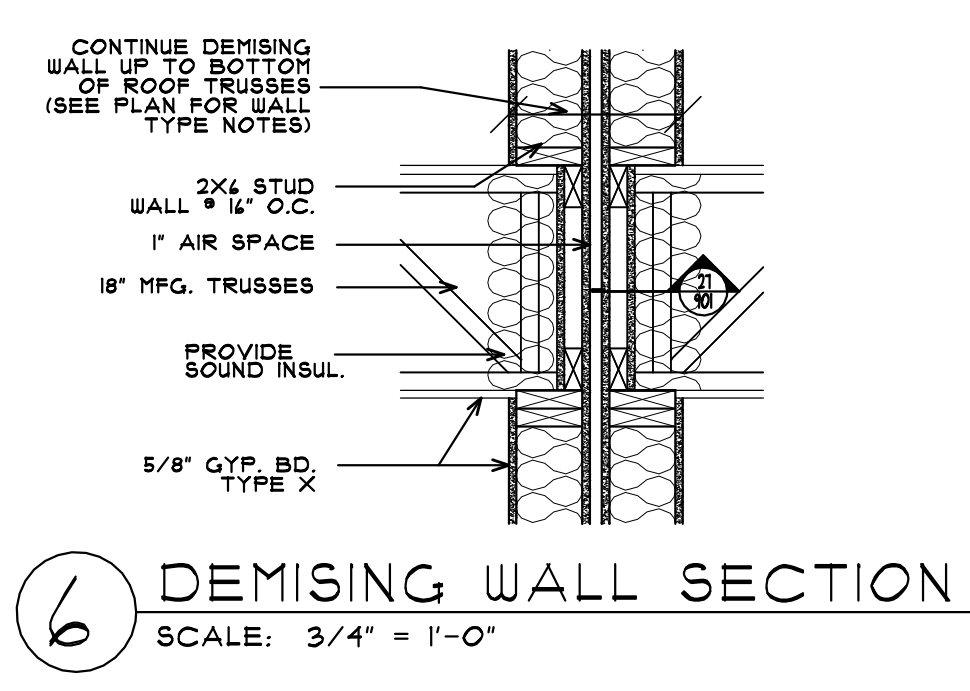
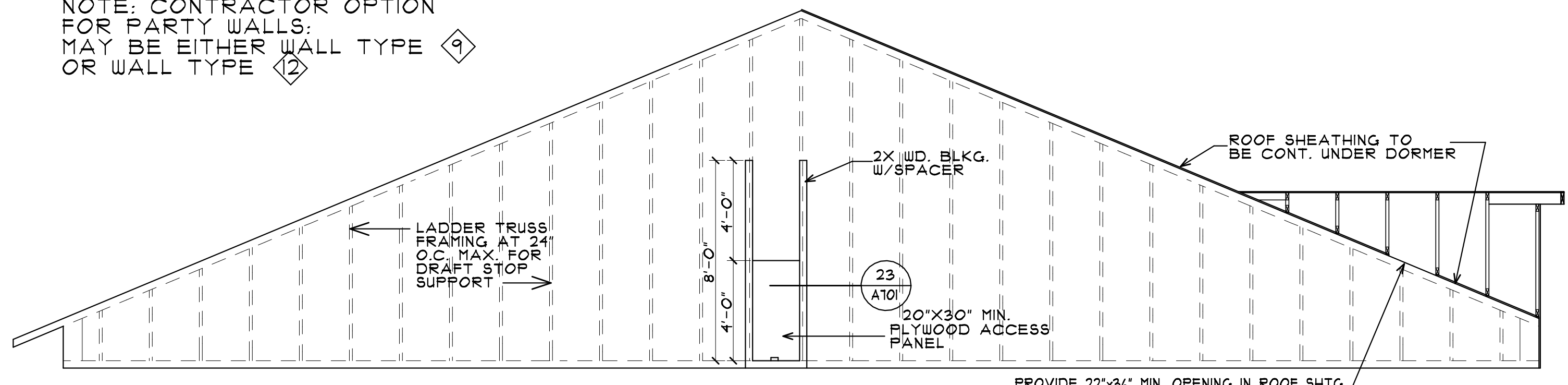
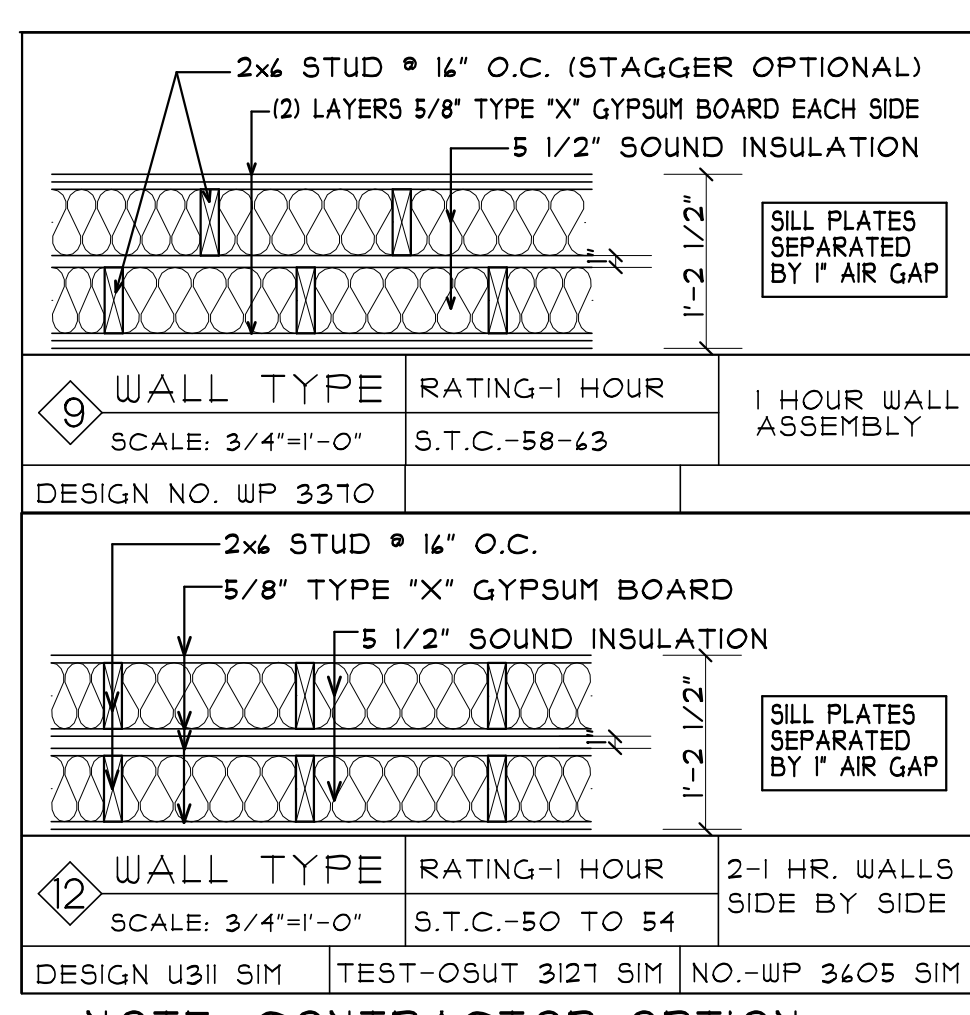
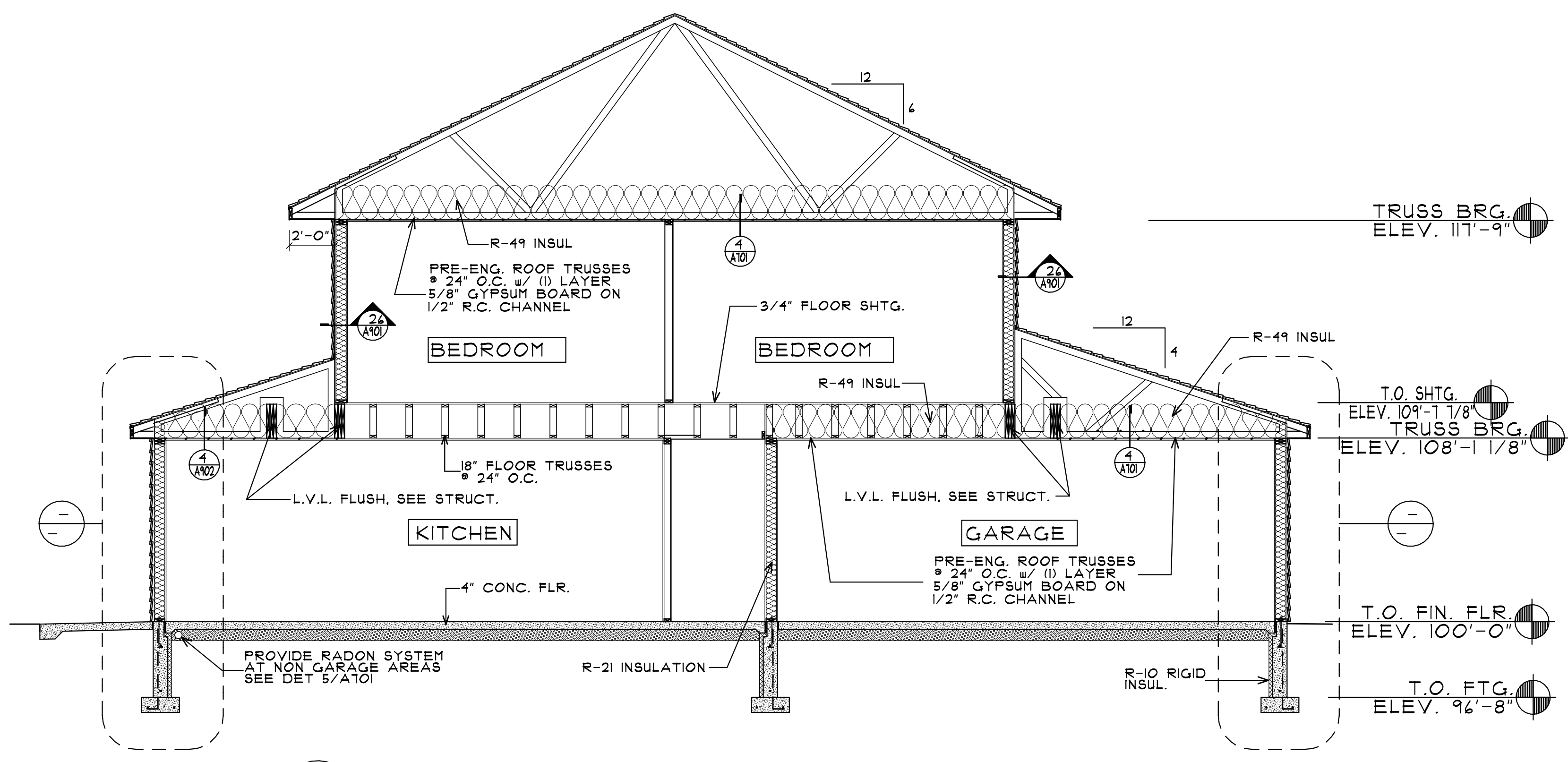
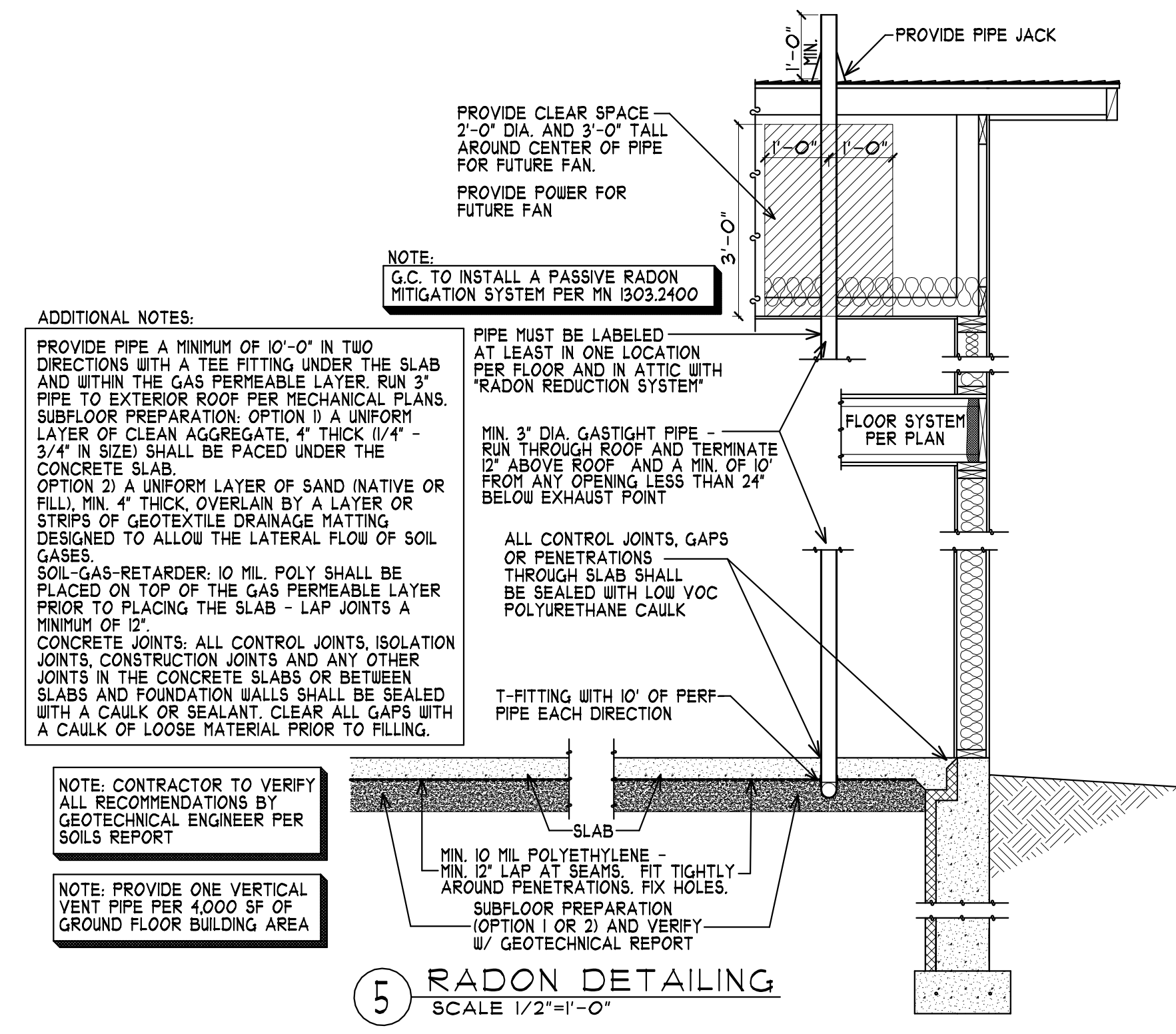
REVISIONS COMMENTS

PROPOSED:
RED WING
TOWN HOMES BLDG. 4-3
RED WING, MN

DEVELOPER:
KB KELLER/BAARTMAN
PROFESSIONAL ARCHITECTS
RED WING, MN
(651) 388-0000

These documents are not valid for building permit unless signed in ink and over sealed. Copies are not valid.
I hereby certify that the plan, specification or report was prepared by me or under my direct supervision and that I am a duly licensed Architect under the laws of the state of MINNESOTA
Date: 11/14/19 # 22288
Name: NORMAN E. COLE, Signature

COLE GROUP
ARCHITECTS LLC
214 Park Avenue South
Saint Cloud, MN 56301
(320) 454-4870
www.colegrouparchitects.com



NOTE: CONTRACTOR OPTION FOR PARTY WALLS: MAY BE EITHER WALL TYPE 9 OR WALL TYPE 12

DEVELOPER: **KB KELLER/BAARTMAN** ARCHITECTS LLC
 PROJECT: **RED WING TOWN HOMES BLDG. 4-3**
 RED WING, MN
 REID WING, MN
 (651) 388-0000

PROPOSED: **RED WING TOWN HOMES BLDG. 4-3**
 RED WING, MN
 REID WING, MN

REVISIONS COMMENTS

PLOTTED: 11-14-19 FILE: 17083D COM: 4

Project No. 19042
 Submittal Date: 11-14-19
 Document Set: BID SET

A701

