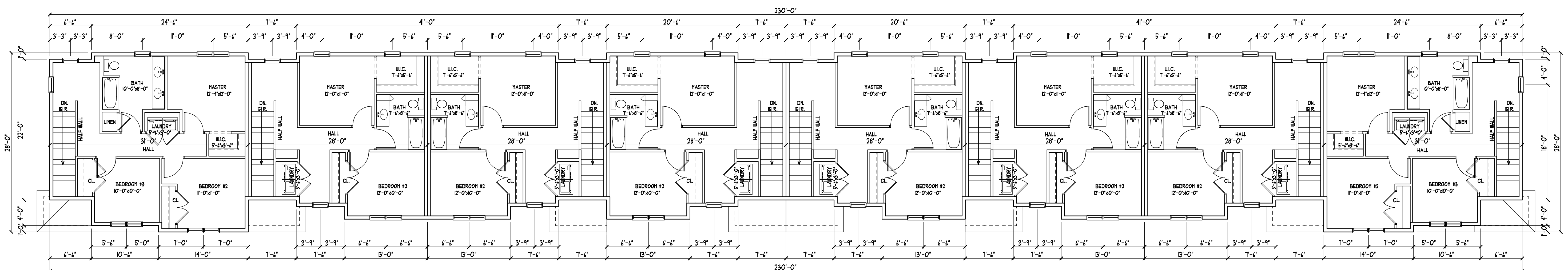


ROOF PLAN - BLDG. "8-5"
SCALE: 1/8" = 1'-0"



<p>3 BED (2 BATHS)</p> <p>241 S.F. DOWN + 544 S.F. GARAGE 783 S.F. 3/4 BATH MAIN 891 S.F. FULL BATH UP 1524 S.F. TOTAL + 544 S.F. GARAGE</p>	<p>2 BED (2 BATHS)</p> <p>162 S.F. + 544 S.F. GARAGE 489 S.F. 1/2 BATH MAIN 483 S.F. FULL BATH UP 1534 S.F. TOTAL + 544 S.F. GARAGE</p>	<p>2 BED (2 BATHS)</p> <p>162 S.F. + 544 S.F. GARAGE 489 S.F. 1/2 BATH MAIN 483 S.F. FULL BATH UP 1534 S.F. TOTAL + 544 S.F. GARAGE</p>	<p>2 BED (2 BATHS)</p> <p>162 S.F. + 544 S.F. GARAGE 489 S.F. 1/2 BATH MAIN 483 S.F. FULL BATH UP 1534 S.F. TOTAL + 544 S.F. GARAGE</p>	<p>2 BED (2 BATHS)</p> <p>162 S.F. + 544 S.F. GARAGE 489 S.F. 1/2 BATH MAIN 483 S.F. FULL BATH UP 1534 S.F. TOTAL + 544 S.F. GARAGE</p>	<p>2 BED (2 BATHS)</p> <p>162 S.F. + 544 S.F. GARAGE 489 S.F. 1/2 BATH MAIN 483 S.F. FULL BATH UP 1534 S.F. TOTAL + 544 S.F. GARAGE</p>	<p>2 BED (2 BATHS)</p> <p>162 S.F. + 544 S.F. GARAGE 489 S.F. 1/2 BATH MAIN 483 S.F. FULL BATH UP 1534 S.F. TOTAL + 544 S.F. GARAGE</p>	<p>3 BED (2 BATHS)</p> <p>241 S.F. DOWN + 544 S.F. GARAGE 783 S.F. 3/4 BATH MAIN 891 S.F. FULL BATH UP 1524 S.F. TOTAL + 544 S.F. GARAGE</p>
---	--	--	--	--	--	--	---

SECOND FLOOR PLAN - BLDG. "8-5"
SCALE: 1/8" = 1'-0" (8) PLEX 5,135 S.F.

DEVELOPER: **KB KELLER/BAARTMAN** PERFORMER: **PERFORMER**
 RED WING TOWN HOMES BLDG. 8-5
 RED WING, MN (651) 388-0000
 REID WING, MN
 RED WING, MN

PROPOSED: **RED WING TOWN HOMES BLDG. 8-5**
 RED WING, MN

REVISIONS COMMENTS
 REVISIONS COMMENTS

Project No. 19021
 Submittal Date:
 Document Set: BID SET

A101

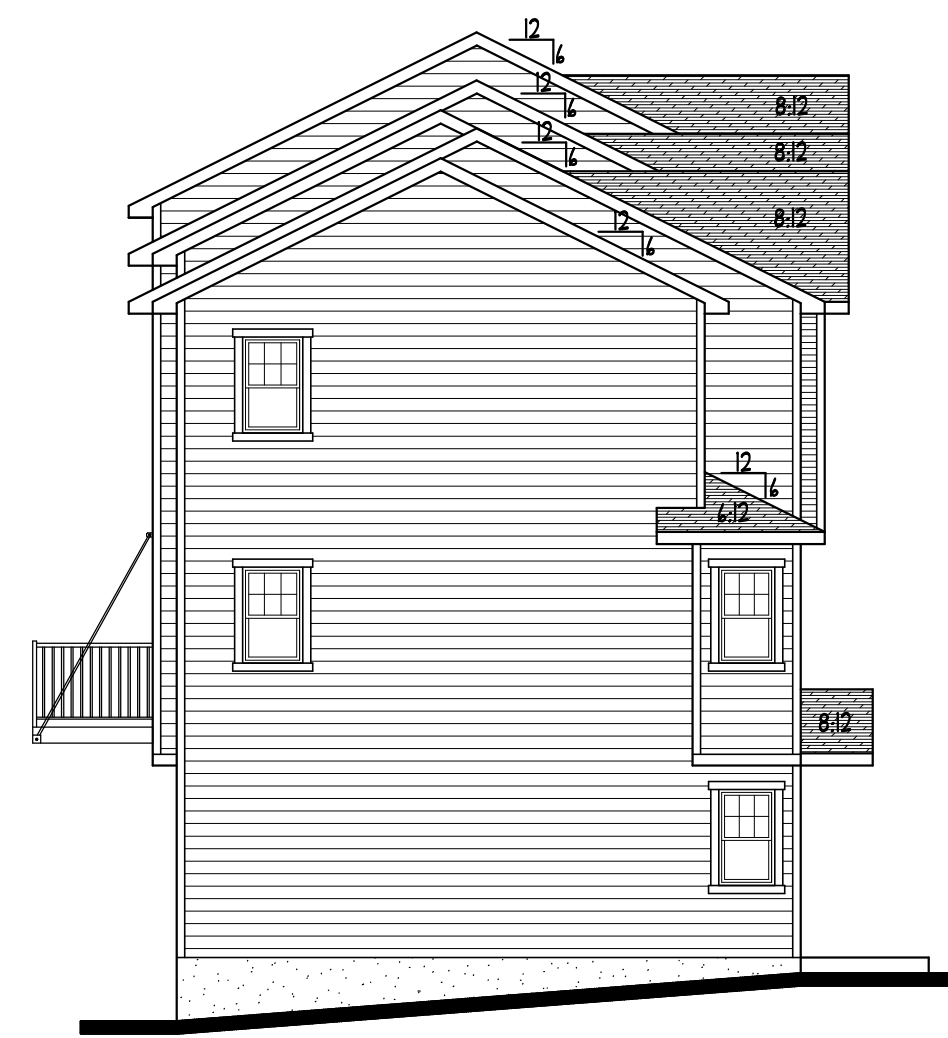
COLE GROUP ARCHITECTS LLC
 214 Park Avenue South
 Suite 102
 Saint Cloud, MN 56301
 (507) 451-4510
 www.colegrouparchitects.com

These documents are not valid for building permits unless signed in ink and not altered. Copies are not valid.
 I hereby certify that this plan, specification or report was prepared by me or under my direct supervision and that I am a duly licensed architect under the laws of the State of MINNESOTA.
 Date: 11/20/19 # 22788
 Name: NORMAN E. COLE, Signature

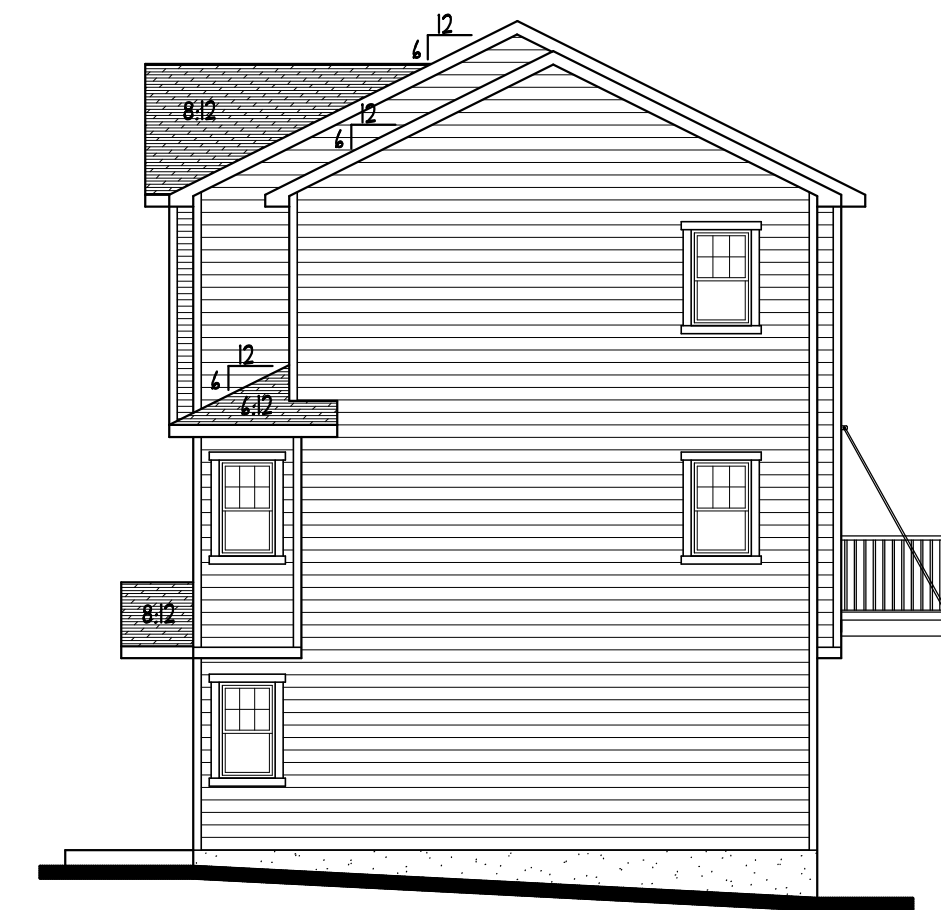
PLOTTED: 11-14-19 FILE: 19067P COM: 3



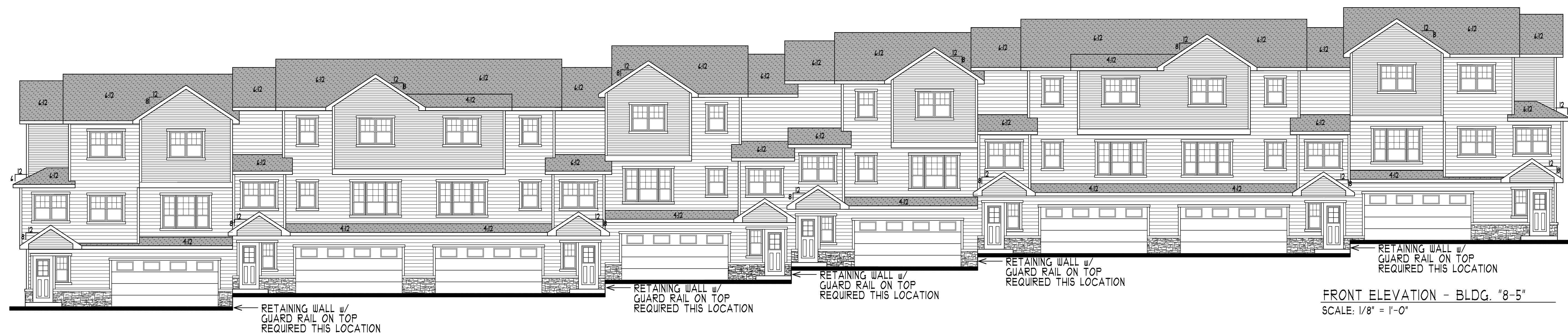
REAR ELEVATION - BLDG. "8-5"
SCALE: 1/8" = 1'-0"



LEFT END ELEVATION - BLDG. "8-5"
SCALE: 1/8" = 1'-0"



RIGHT END ELEVATION - BLDG. "8-5"
SCALE: 1/8" = 1'-0"



FRONT ELEVATION - BLDG. "8-5"
SCALE: 1/8" = 1'-0"

These documents are not valid for building permit unless signed in ink and over-stamped. Copies are not valid.
I hereby certify that the plan, specification or report was prepared by me or under my direct supervision and that I am a duly licensed Architect under the laws of the state of MINNESOTA.
Date: 11/14/19 # 2288
New: NORMAN E. COLE, Signature

DEVELOPER:
KB KELLER/BAARIMAN
PROPERTIES
RED WING, MN
RED WING, MN
(651) 388-0000

PROPOSED:
RED WING TOWN HOMES BLDG. 8-5
RED WING, MN

REVISIONS COMMENTS
A1: REVISION

Project No. 19017
Submittal Date:
Document Set: BID SET

A501

COLE GROUP
ARCHITECTS LLC
24 Park Avenue South
Suite 102
Saint Cloud, MN 56301
(320) 424-4510
www.colegrouparchitects.com

PLOTTED: 11-14-19 FILE: 19067E COM: 4

GA FILE NO. RC 2602 **GENERIC** **1 HOUR FIRE**

WOOD TRUSSES, GYPSUM WALLBOARD

Base layer 1/4" Type X gypsum wallboard applied at right angles to wood roof trusses 24" o.c. with 1/4" Type W or S drywall screws 24" o.c. Face layer 1/4" Type X gypsum wallboard or gypsum veneer base applied at right angles to trusses with 1/4" Type W or S drywall screws 12" o.c. at joints and intermediate trusses and 1/4" Type G drywall screws 12" o.c. placed 2" back on either side of end joints. Joints offset 24" from base layer joints. Wood trusses supporting 1/2" wood structural panels applied at right angles to trusses with 8d nails. Appropriate roof covering. Ceiling provides one hour fire resistance protection for trusses.

Approx. Ceiling Weight: 5 pcf
Fire Test: FM FC 172, 2-25-72; ITS, 8-6-86

1 HR. ROOF / CEILING ASSEMBLY

GA FILE NO. RC 2601 **GENERIC** **1 HOUR FIRE**

GYPSUM BOARD, WOOD JOISTS, ROOF COVERING

Base layer 1/4" Type X gypsum wallboard applied at right angles to 2 x 10 wood joists 24" o.c. with 1/4" Type W or S drywall screws 24" o.c. Face layer 1/4" Type X gypsum wallboard or gypsum veneer base applied at right angles to joists with 1/4" Type W or S drywall screws 12" o.c. at joints and intermediate joists and 1/4" Type G drywall screws 12" o.c. placed 2" back on either side of end joints. Joints offset 24" from base layer joints. Wood joists supporting 1/2" plywood with exterior glue applied at right angles to joists with 8d nails. Appropriate roof covering. Ceiling provides one hour fire resistance protection for wood framing, including trusses.

Approx. Ceiling Weight: 5 pcf
Fire Test: FM FC 172, 2-25-72

1 HR. ROOF / CEILING ASSEMBLY

Design No. P522
Unrestrained Assembly Rating - 1 Hr
Finish Rating - 25 Min (See Items 3 or 5A)

1 HR. ROOF / CEILING ASSEMBLY

GA FILE NO. RC 2601 **GENERIC** **1 HOUR FIRE**

GYPSUM BOARD, WOOD JOISTS, ROOF COVERING

Base layer 1/4" Type X gypsum wallboard applied at right angles to 2 x 10 wood joists 24" o.c. with 1/4" Type W or S drywall screws 24" o.c. Face layer 1/4" Type X gypsum wallboard or gypsum veneer base applied at right angles to joists with 1/4" Type W or S drywall screws 12" o.c. at joints and intermediate joists and 1/4" Type G drywall screws 12" o.c. placed 2" back on either side of end joints. Joints offset 24" from base layer joints. Wood joists supporting 1/2" plywood with exterior glue applied at right angles to joists with 8d nails. Appropriate roof covering. Ceiling provides one hour fire resistance protection for wood framing, including trusses.

Approx. Ceiling Weight: 5 pcf
Fire Test: FM FC 172, 2-25-72; ITS, 8-6-86

1 HR. ROOF / CEILING ASSEMBLY

GA FILE NO. FC 5406 **GENERIC** **1 HOUR FIRE** **35 to 39 STC SOUND**

WOOD JOISTS, GYPSUM WALLBOARD

Base layer 1/4" Type X gypsum wallboard applied at right angles to 2 x 10 wood joists 24" o.c. with 1/4" Type W or S drywall screws 24" o.c. Face layer 1/4" Type X gypsum wallboard or gypsum veneer base applied at right angles to joists with 1/4" Type S drywall screws 12" o.c. at joints and intermediate joists and 1/4" Type G drywall screws 12" o.c. placed 2" back on either side of end joints. Joints offset 24" from base layer joints. Wood joists supporting 1/2" plywood with exterior glue applied at right angles to joists with 8d nails. Ceiling provides one hour fire resistance protection for wood framing, including trusses.

Approx. Ceiling Weight: 5 pcf
Fire Test: FM FC 172, 2-25-72
Sound Test: Estimated

1 HR. FLOOR / CEILING ASSEMBLY

GA FILE NO. RC 2750 **GENERIC** **2 HOUR FIRE**

GYPSUM WALLBOARD, RIGID FURRING CHANNELS, WOOD JOISTS, RIGID FURRING CHANNELS, ROOF COVERING

Base layer 1/4" Type X gypsum wallboard applied at right angles to either 2 x 8 wood joists or 9/16" deep wood joists 24" o.c. with 1/4" Type W drywall screws 12" o.c. Second layer 1/4" Type X gypsum wallboard applied at right angles to joists or I-joists with 2" Type W drywall screws 12" o.c. Second layer joints offset 24" from base layer joints. Third layer 1/4" Type X gypsum wallboard applied at right angles to joists or I-joists with 2" Type W drywall screws 12" o.c. Third layer joints offset 12" from second layer joints. Hat-shaped rigid furring channels 24" o.c. applied at right angles to joists or I-joists over third layer with two 2 1/2" long Type W drywall screws at each joint. Face layer 1/4" Type X gypsum wallboard applied at right angles to furring channels with 1/4" Type S drywall screws 12" o.c. Wood joists or I-joists supporting 1/4" T & G gable plywood applied at right angles to joists or I-joists with 8d nails 6" o.c. at joints and 12" at intermediate joists or I-joists. Appropriate roof covering. Ceiling provides two-hour fire-resistance protection for wood framing.

Approx. Ceiling Weight: 12 pcf
Fire Test: UL R4024, 00NK26545, 4-27-01; UL R4024, 03NK11206, 3-19-03; UL Design L556; ULC Design M514

2 HR. ROOF / CEILING ASSEMBLY

GA FILE NO. FC 5725 **GENERIC** **2 HOUR FIRE**

WOOD FLOOR, WOOD JOISTS, GYPSUM WALLBOARD, RIGID FURRING CHANNELS

Base layer 1/4" Type X gypsum wallboard applied at right angles to 2 x 8 wood joists 24" o.c. with 1/4" Type W drywall screws 12" o.c. Second layer 1/4" Type X gypsum wallboard applied at right angles to joists with 2" Type W drywall screws 12" o.c. Second layer joints offset 24" from base layer joints. Third layer 1/4" Type X gypsum wallboard applied at right angles to joists with 2" Type W drywall screws 12" o.c. Third layer joints offset 12" from second layer joints. Hat-shaped rigid furring channels 24" o.c. applied at right angles to joists over third layer with two 2 1/2" long Type W drywall screws at each joint. Face layer 1/4" Type X gypsum wallboard applied at right angles to furring channels with 1/4" Type S drywall screws 12" o.c. Wood joists supporting 1/4" T & G gable plywood applied at right angles to joists with 8d nails 6" o.c. at joints and 12" at intermediate joists. Ceiling provides two-hour fire-resistance protection for wood framing.

Approx. Ceiling Weight: 12 pcf
Fire Test: UL R4024, 00NK26545, 4-27-01; UL R4024, 03NK11206, 3-19-03; UL Design L556; ULC Design M514

2 HR. FLOOR / CEILING ASSEMBLY

WIJ-1.5 One-Hour Fire-Resistive Ceiling Assembly
Floor/Ceiling - 100% Design Load - 1 Hour Rating - ASTM E 119 / NFPA 251

1 HR. ROOF / CEILING AND FLOOR / CEILING ASSEMBLY

Design No. L563
December 28, 2007
Unrestrained Assembly Rating - 1 Hr
Finish Rating - 25 Min (See Items 3 or 5A)
Load Restricted for Canadian Applications - See Guide B31XZ

1 HR. FLOOR / CEILING ASSEMBLY

GA FILE NO. FC 5752 **GENERIC** **2 HOUR FIRE**

WOOD FLOOR, WOOD JOISTS, GYPSUM WALLBOARD, RIGID FURRING CHANNELS

Base layer 1/4" Type X gypsum wallboard applied at right angles to 2 x 8 wood joists 24" o.c. with 1/4" Type W drywall screws 12" o.c. Second layer 1/4" Type X gypsum wallboard applied at right angles to joists with 2" Type W drywall screws 12" o.c. Second layer joints offset 24" from base layer joints. Third layer 1/4" Type X gypsum wallboard applied at right angles to joists with 2" Type W drywall screws 12" o.c. Third layer joints offset 12" from second layer joints. Hat-shaped rigid furring channels 24" o.c. applied at right angles to joists over third layer with two 2 1/2" long Type W drywall screws at each joint. Face layer 1/4" Type X gypsum wallboard applied at right angles to furring channels with 1/4" Type S drywall screws 12" o.c. Wood joists supporting 1/4" T & G gable plywood applied at right angles to joists with 8d nails 6" o.c. at joints and 12" at intermediate joists. Ceiling provides two-hour fire-resistance protection for wood framing.

Approx. Ceiling Weight: 12 pcf
Fire Test: UL R4024, 00NK26545, 4-27-01; UL R4024, 03NK11206, 3-19-03; UL Design L556; ULC Design M514

2 HOUR FIRE

GA FILE NO. FC 5752 **PROPRIETARY*** **2 HOUR FIRE**

WOOD TRUSSES, WOOD STRUCTURAL PANELS, GYPSUM FLOOR TOPPING, RESILIENT CHANNELS, GLASS OR MINERAL FIBER BATT OR LOOSE FILL INSULATION, GYPSUM WALLBOARD

Base layer 1/4" proprietary type X gypsum wallboard or gypsum veneer base applied at right angles to minimum 12" deep parallel chord wood trusses 24" o.c. with 1/4" Type S drywall screws 12" o.c. at joints and intermediate trusses and 1/4" Type G drywall screws 12" o.c. placed 2" back on either side of end joints. Joints offset 24" from base layer joints. Wood trusses supporting 1/2" wood structural panels applied at right angles to trusses with 8d nails. Appropriate roof covering. Ceiling provides two-hour fire-resistance protection for trusses.

Approx. Ceiling Weight: 3 pcf
Fire Test: UL R568, 05NK20716, 8-10-05; UL Design L577

2 HR. FLOOR / CEILING ASSEMBLY

GA FILE NO. FC 5752 **PROPRIETARY*** **2 HOUR FIRE**

WOOD TRUSSES, WOOD STRUCTURAL PANELS, GYPSUM FLOOR TOPPING, RESILIENT CHANNELS, GLASS OR MINERAL FIBER BATT OR LOOSE FILL INSULATION, GYPSUM WALLBOARD

Base layer 1/4" proprietary type X gypsum wallboard or gypsum veneer base applied at right angles to minimum 12" deep parallel chord wood trusses 24" o.c. with 1/4" Type S drywall screws 12" o.c. at joints and intermediate trusses and 1/4" Type G drywall screws 12" o.c. placed 2" back on either side of end joints. Joints offset 24" from base layer joints. Wood trusses supporting 1/2" wood structural panels applied at right angles to trusses with 8d nails. Appropriate roof covering. Ceiling provides two-hour fire-resistance protection for trusses.

Approx. Ceiling Weight: 3 pcf
Fire Test: UL R568, 05NK20716, 8-10-05; UL Design L577

2 HR. FLOOR / CEILING ASSEMBLY

GA FILE NO. FC 5752 **PROPRIETARY*** **2 HOUR FIRE**

WOOD TRUSSES, WOOD STRUCTURAL PANELS, GYPSUM FLOOR TOPPING, RESILIENT CHANNELS, GLASS OR MINERAL FIBER BATT OR LOOSE FILL INSULATION, GYPSUM WALLBOARD

Base layer 1/4" proprietary type X gypsum wallboard or gypsum veneer base applied at right angles to minimum 12" deep parallel chord wood trusses 24" o.c. with 1/4" Type S drywall screws 12" o.c. at joints and intermediate trusses and 1/4" Type G drywall screws 12" o.c. placed 2" back on either side of end joints. Joints offset 24" from base layer joints. Wood trusses supporting 1/2" wood structural panels applied at right angles to trusses with 8d nails. Appropriate roof covering. Ceiling provides two-hour fire-resistance protection for trusses.

Approx. Ceiling Weight: 3 pcf
Fire Test: UL R568, 05NK20716, 8-10-05; UL Design L577

2 HR. FLOOR / CEILING ASSEMBLY

GA FILE NO. BM 1137 **PROPRIETARY*** **1 HOUR FIRE**

STEEL FRAME, GYPSUM WALLBOARD

Base layer 1/4" proprietary type X gypsum wallboard applied to beam cage with 1" Type S-12 drywall screws 12" o.c. Face layer 1/4" proprietary type X gypsum wallboard applied to beam cage with 1/4" Type S-12 drywall screws 12" o.c. Joints offset from base layer joints.

Approx. Ceiling Weight: 3 pcf
Fire Test: UL R1519+133, 7-16-75; Based on UL R3680+7, 8-11-87; UL Design L524

1 HR. BEAM ASSEMBLY

PROPOSED: RED WING RECREATION CENTER
TOWN HOMES BLDG. 85
RED WING, MN
RED WING, MN

Project No. 19047
Submitted Date: [Blank]
Document Set: BID SET
A902

DEVELOPER: **KB KELLER/BAIRMAN**
ARCHITECT: **COLE GROUP ARCHITECTS LLC**

These documents are not valid for building permit unless signed in ink and over sealed. Copies are not valid.
I hereby certify that this plan, specification or report was prepared by me or under my direct supervision and that I am a duly Licensed Architect under the laws of the state of MINNESOTA.
Date: 11/27/07
Name: **NORMAN E. COLE** Signature

PLOTTED: 11-14-09 11:49 AM FILE: R09B08L COM: 4 UPDATE: 4/29/19