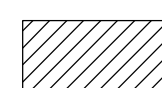
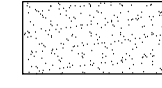

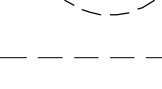
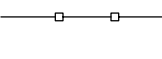


NO.	DESCRIPTION	DATE

Landscape Legend:

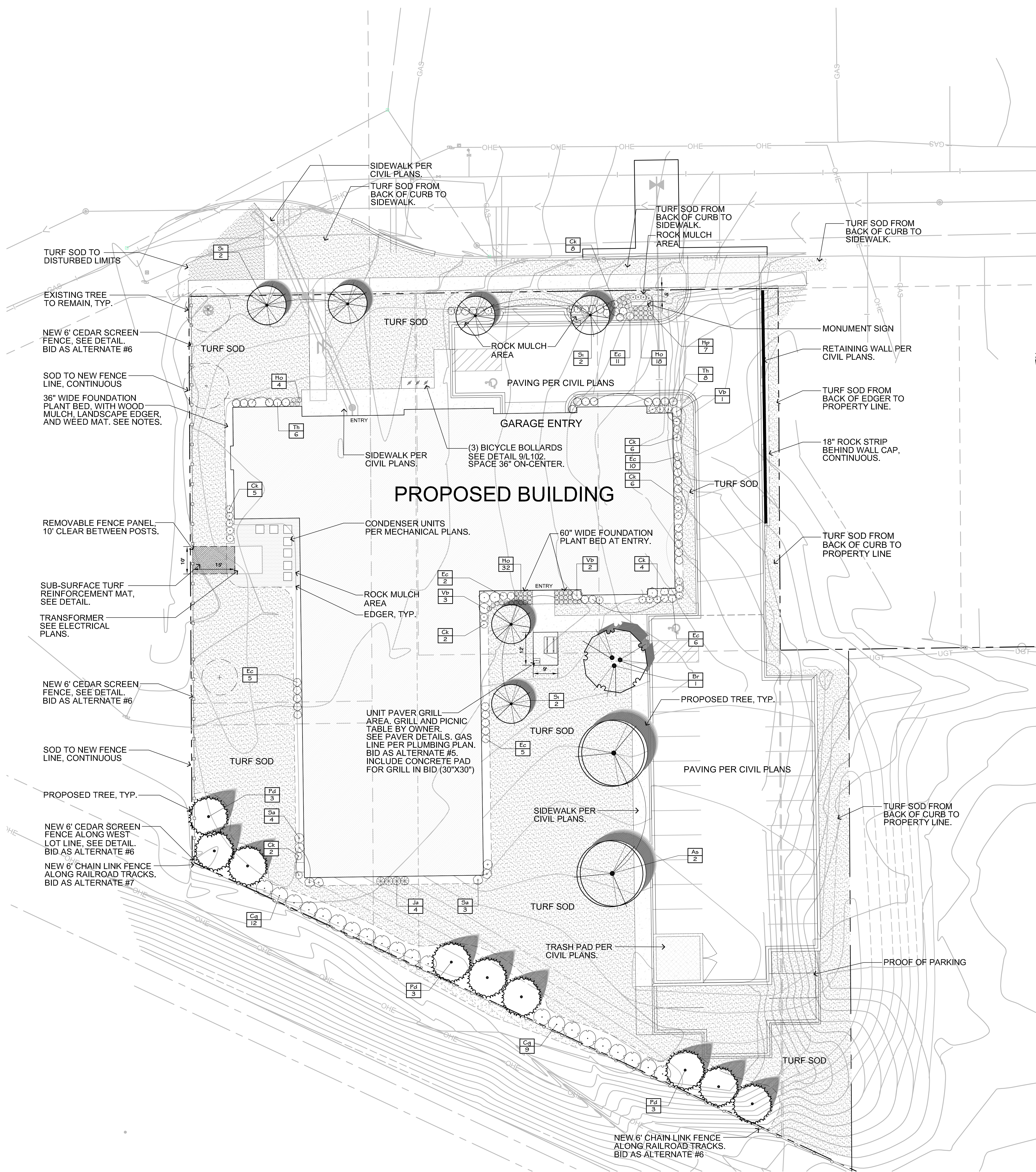
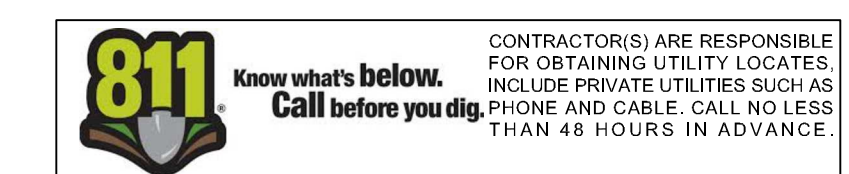
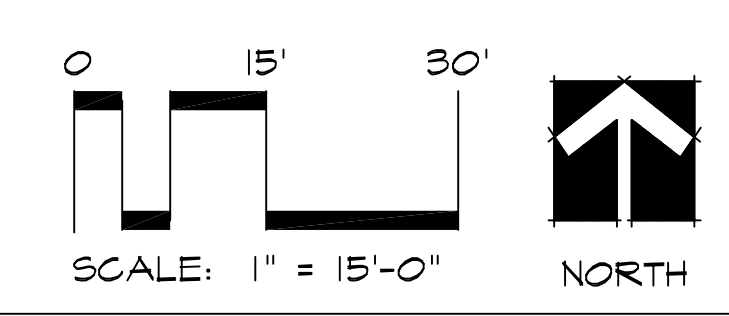
-  Proposed Building
-  New Turf Sod
-  Existing Tree To Remain
-  Landscape Edging
-  Proposed Wood Privacy Fence
Bio As Alternate #6

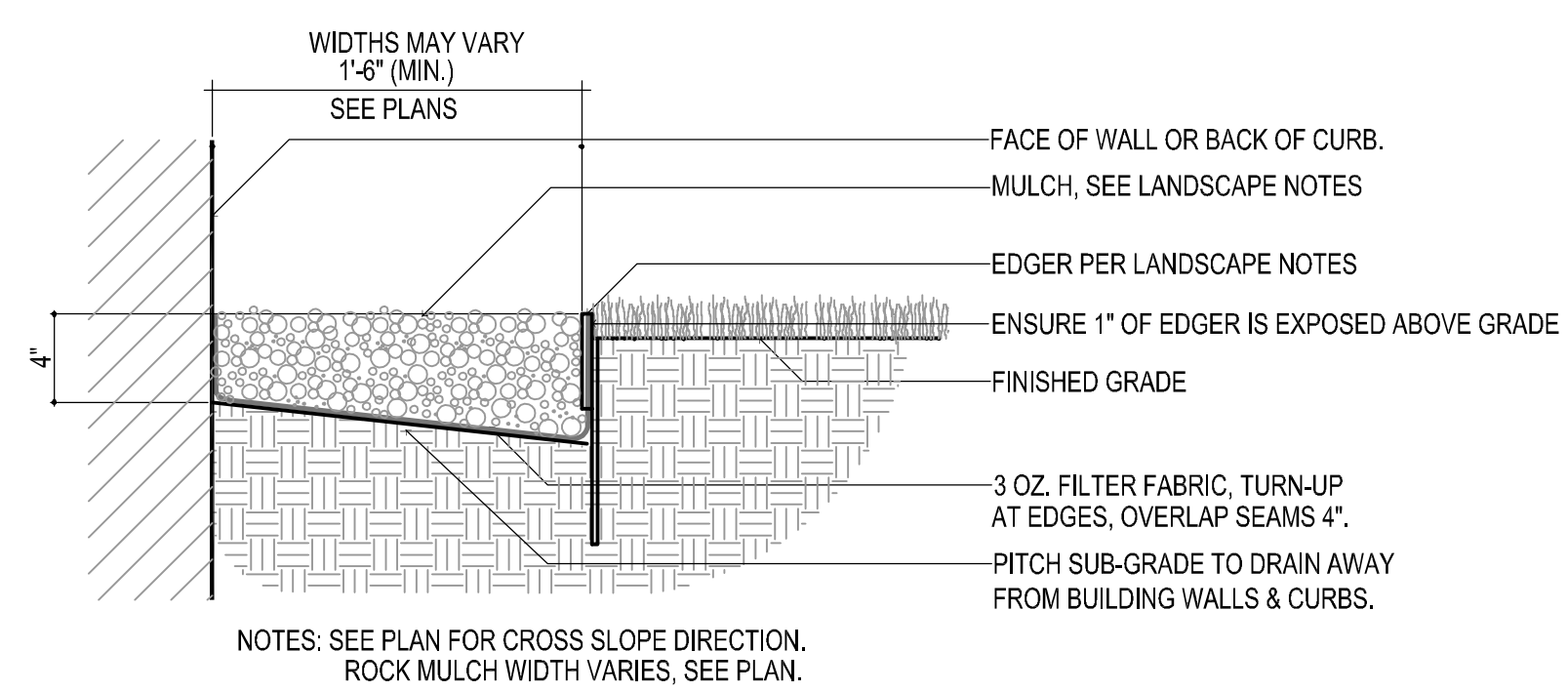
PLANT SCHEDULE BASE-BID

DECIDUOUS TREES	CODE	BOTANICAL NAME	COMMON NAME	SIZE	CONTAINER	QTY	
	As	Acer x freemanii 'Sienna'	Sienna Glen Maple	2.5" Cal.	B&B	2	
	Br	Betula nigra	River Birch	6' Hgt.	B&B	1	
EVERGREEN TREES	CODE	BOTANICAL NAME	COMMON NAME	SIZE	CONTAINER	QTY	
	Pd	Picea glauca 'Densata'	Black Hills Spruce	6' Hgt.	B&B	9	
FLOWERING TREES	CODE	BOTANICAL NAME	COMMON NAME	SIZE	CONTAINER	QTY	
	Si	Syringa reticulata 'Ivory Silk'	Ivory Silk Japanese Tree Lilac	2" Cal.	B&B	6	
SHRUBS	CODE	BOTANICAL NAME	COMMON NAME	SIZE	CONTAINER	QTY	
	Cg	Cornus racemosa	Gray Dogwood	5 gal.		21	
	Ec	Euonymus fortunei 'Canadale Gold'	Canadale Gold Euonymus	3 gal. (Min. 18" Height)	Pot	39	
	Ja	Juniperus sabina 'Arcadia'	Arcadia Juniper	3 gal.	Pot	4	
	Sa	Spiraea x bumalda 'Anthony Waterer'	Anthony Waterer Spiraea	3 gal. (Min. 18" Height)	Pot	7	
	Th	Taxus x media 'Huber's Tawny Gold'	Huber's Tawny Gold Spreading Yew	3 gal.	Pot	14	
	Vb	Viburnum trilobum 'Bailey Compact'	Compact American Cranberry Bush	5 gal. (Min. 18" Height)	Pot	6	
ANNUALS/PERENNIALS	CODE	BOTANICAL NAME	COMMON NAME	SIZE	CONTAINER	QTY	
	Ck	Calamagrostis x acutiflora 'Karl Foerster'	Feather Reed Grass	1 gal.	Pot	33	
	Ho	Hemerocallis x 'Stella de Oro'	Stella de Oro Daylily	1 gal.	Pot	54	
	Hp	Heuchera micrantha 'Palace Purple'	Palace Purple Coral Bells	1 gal.	Pot	7	
GROUND COVERS	CODE	BOTANICAL NAME	COMMON NAME	SIZE	CONTAINER	SPACING	QTY
	Pa2	Poa pratensis 'Admiral'	Kentucky Bluegrass	sod			24,473 sf

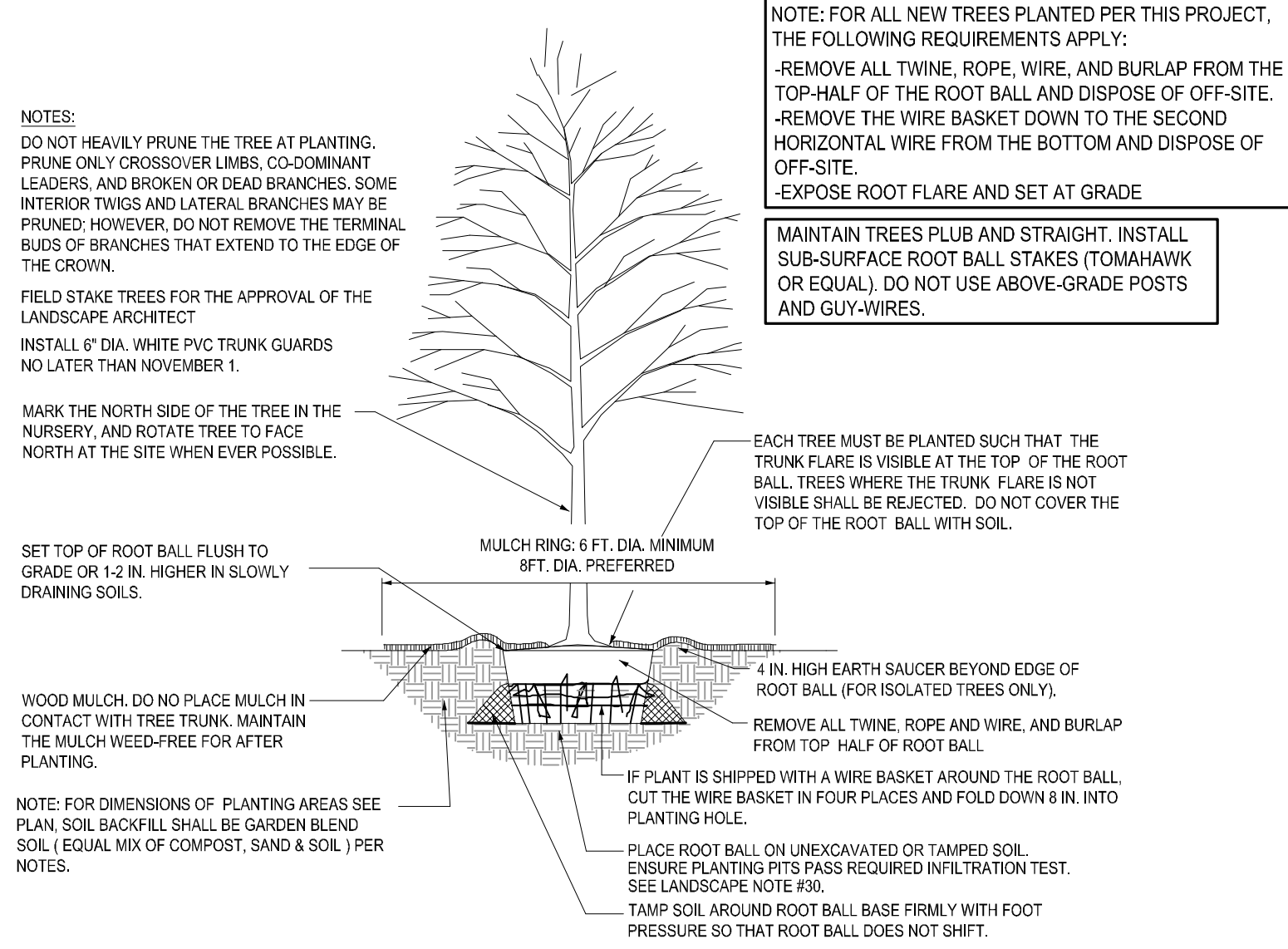
General Notes:

- The removal, pruning, and/or planting of trees in the public boulevard requires an approved permit from the City Forester's Office. Any work must be completed by a licensed tree contractor.
- See Civil Engineer's plans for site plan layout and dimensions.
- Contractor to coordinate any work in the city right-of-way with City of Owatonna Public Works Department.
- Expose root flare and set at-grade.
- The contractor is responsible to maintain trees in a plumb position throughout the maintenance period.
- Remove the burlap and ropes from the top 1/3 of the root ball, cut wire basket down to the second horizontal wire from the bottom, and dispose of off-site.
- Refer to Sheet L102 for Landscape Details, Notes, & Schedules.
- Refer to Sheet L103 for Landscape Alt Bid Plant Materials Layout and Plant List.

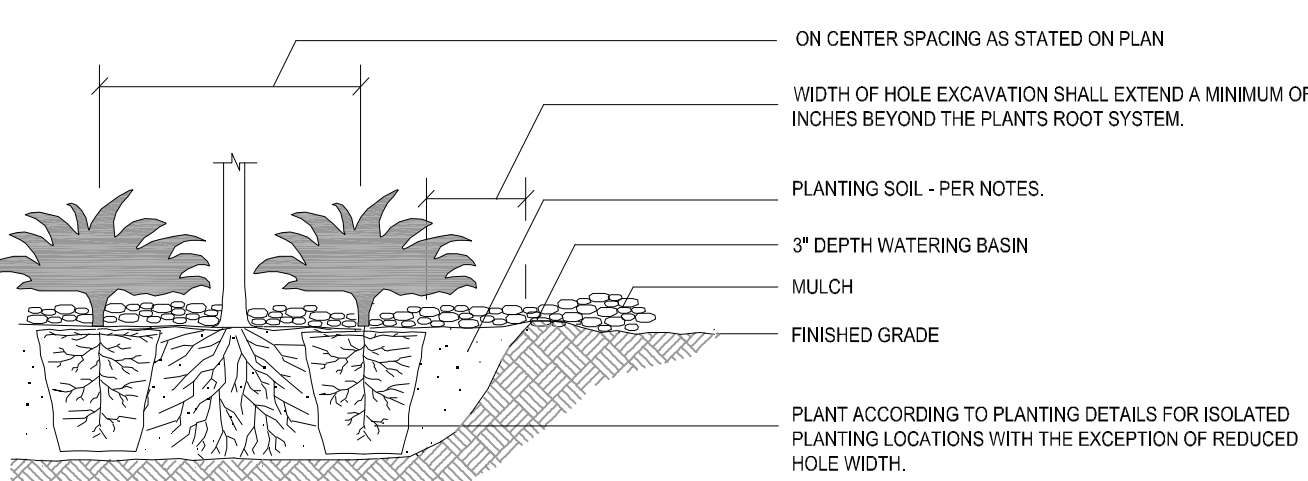




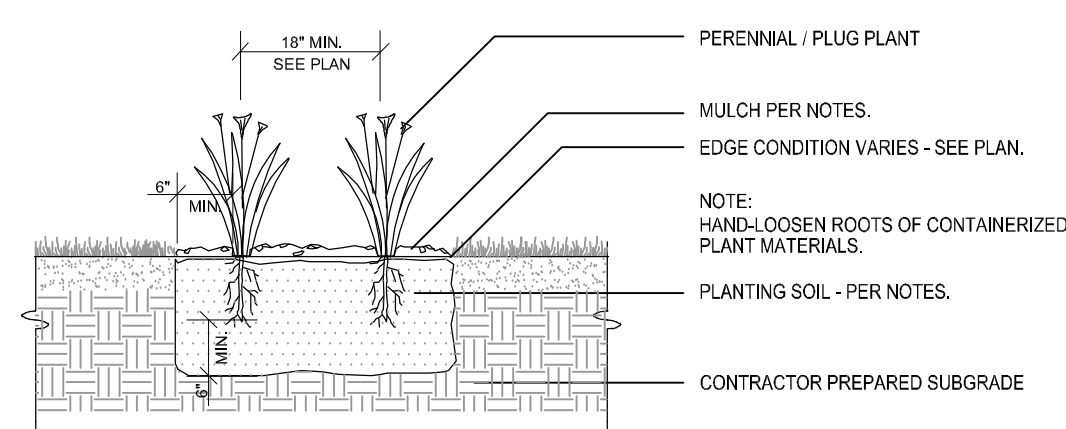
1 PLANT BED EDGE DETAIL
NOT TO SCALE



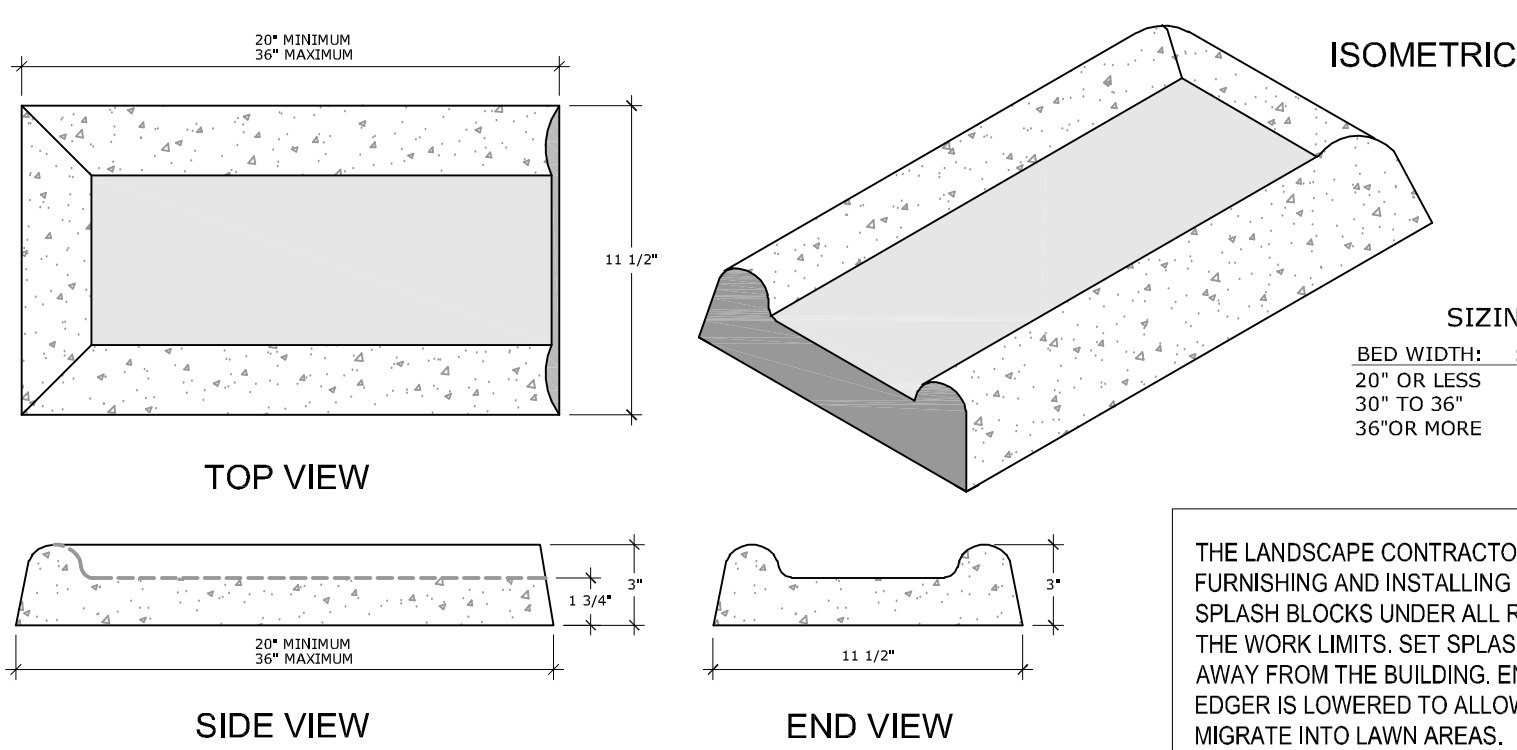
2 DECIDUOUS TREE PLANTING - SECTION
NOT TO SCALE



3 TYP. SHRUB PLANTING - SECTION
NOT TO SCALE



4 TYP. PERENNIAL PLANTING - SECTION
NOT TO SCALE



6 PRECAST CONCRETE SPLASH BLOCK DETAIL
NOT TO SCALE

Landscape Notes and Requirements:

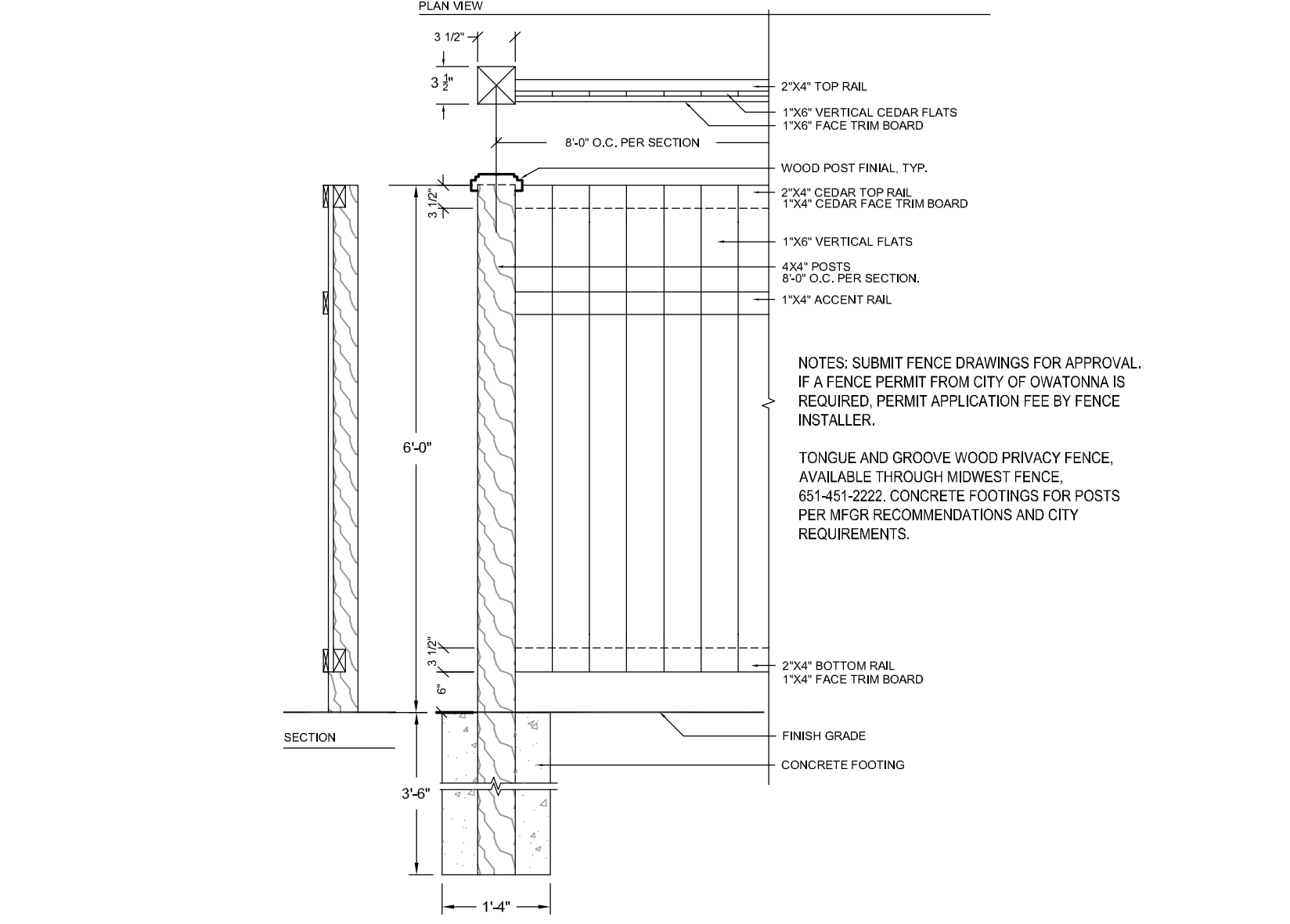
- Tree saucer for individual trees outside of a plant bed to be four inches (4") depth natural single-shred hardwood mulch for trees outside of a plant bed. Install per tree planting detail. Do not place mulch against tree trunk. Remove wire and burlap from top third of root ball before final soil back-fill and mulch.
- Refer to architectural plans for spot elevations, drainage, site dimensions, survey, tree removal, proposed utilities & erosion control.
- All plant material shall comply with the latest edition of the American Standard for Nursery Stock, American Association of Nurserymen. Unless noted otherwise, deciduous shrubs shall have at least 5 canes at the specified shrub height. Plant material shall be delivered as specified.
- Plan takes precedence over plant schedule if discrepancies in quantities exist.
- All proposed plants shall be located and staked as shown.
- Adjustment in location of proposed plant material may be needed in field. Should an adjustment be required, the client will provide field approval. Significant changes may require city review and approval.
- The project landscape contractor shall be held responsible for watering and properly handling all plant materials brought on the site both before and after installation. Schedule plant deliveries to coincide with expected installation time within 36 hours. Install plants and sod between April 15 and June 15 or between September 15 and October 30.
- The landscape contractor shall provide the owner with a watering schedule appropriate to the project site conditions and to plant material growth requirements.
- If the landscape contractor is concerned or perceives any deficiencies in the plant selections, soil conditions, drainage or any other site condition that might negatively affect plant establishment, survival or guarantee, they must bring these deficiencies to the attention of the landscape architect & client prior to bid submission. Plant bed drainage concerns during plant installation shall be brought to the attention of the Owner and General Contractor immediately.
- Contractor shall establish to his/ her satisfaction that soil and compaction conditions are adequate to allow for proper drainage at and around the building site.
- Contractor is responsible for ongoing maintenance of all newly installed material until time of owner acceptance. Any acts of vandalism or damage which may occur prior to owner acceptance shall be the responsibility of the contractor. Contractor shall provide the owner with a maintenance program including, but not limited to, pruning, fertilization and disease/pest control.
- The contractor shall guarantee newly planted material through TWO calendar years from the date of written owner acceptance. Plants that exhibit more than 50% die-back damage shall be replaced at no additional cost to the owner. The contractor shall also provide adequate tree wrap and deer/rodent protection measures for the plantings during the warranty period. Prune dead wood at 11 month and 22 month warranty review periods - use wound paint on trees.
- This layout plan constitutes our understanding of the landscape requirements listed in the ordinance. Changes and modifications may be requested by the city based on applicant information, public input, council decisions, etc.
- The landscape contractor shall be responsible for obtaining any permits and coordinating inspections as required throughout the work process.
- Plant size & species substitutions must be approved in writing prior to acceptance in the field.

- Irrigation: A new irrigation system is required. Irrigation contractor to provide a cost for a new commercial-grade irrigation system, including sleeving under pavement to parking islands. Verify water service pressure and check local codes regarding building connection for irrigation. Irrigation contractor is to submit a proposed irrigation layout plan that utilizes a new connection in the proposed building mechanical room. Install controller, rain sensor, and plumbing connections to meet current plumbing code. Ensure head-to-head coverage of all turf and planted areas. Use commercial irrigation equipment with fully adjustable stream rotor and spray heads (see spec). Submit equipment cut sheets for approval. Coordinate as-needed sleeving under paving with excavation sub-contractor. Coordinate plumbing requirements with mechanical contractor. Ensure irrigation system is installed and functioning prior to installation of landscape materials. For newly landscaped areas not irrigated, the landscape contractor is responsible for watering and maintaining new plants and turf until establishment, through use of temporary irrigation, tree watering bags, watering truck, etc.
- Unless otherwise noted, all edger shall be professional grade 1/2" thick black steel edger, Ryerson or Equal. Anchor every 18" on-center (minimum). Where noted, edger shall be professional grade 5.5" black poly edger with 1" bullnose. Anchor every 18" on-center (minimum). Submit edger sample for Owner approval.
- Landscape Contractor is responsible for coordination with the General Contractor, to protect the new improvements on and off-site during landscape work activities. Report any damage to the General Contractor immediately.
- Unless otherwise noted/indicated, plant beds shall receive rock mulch over 3oz spun fabric (free-draining) weed mat. Submit mulch sample for Owner approval.

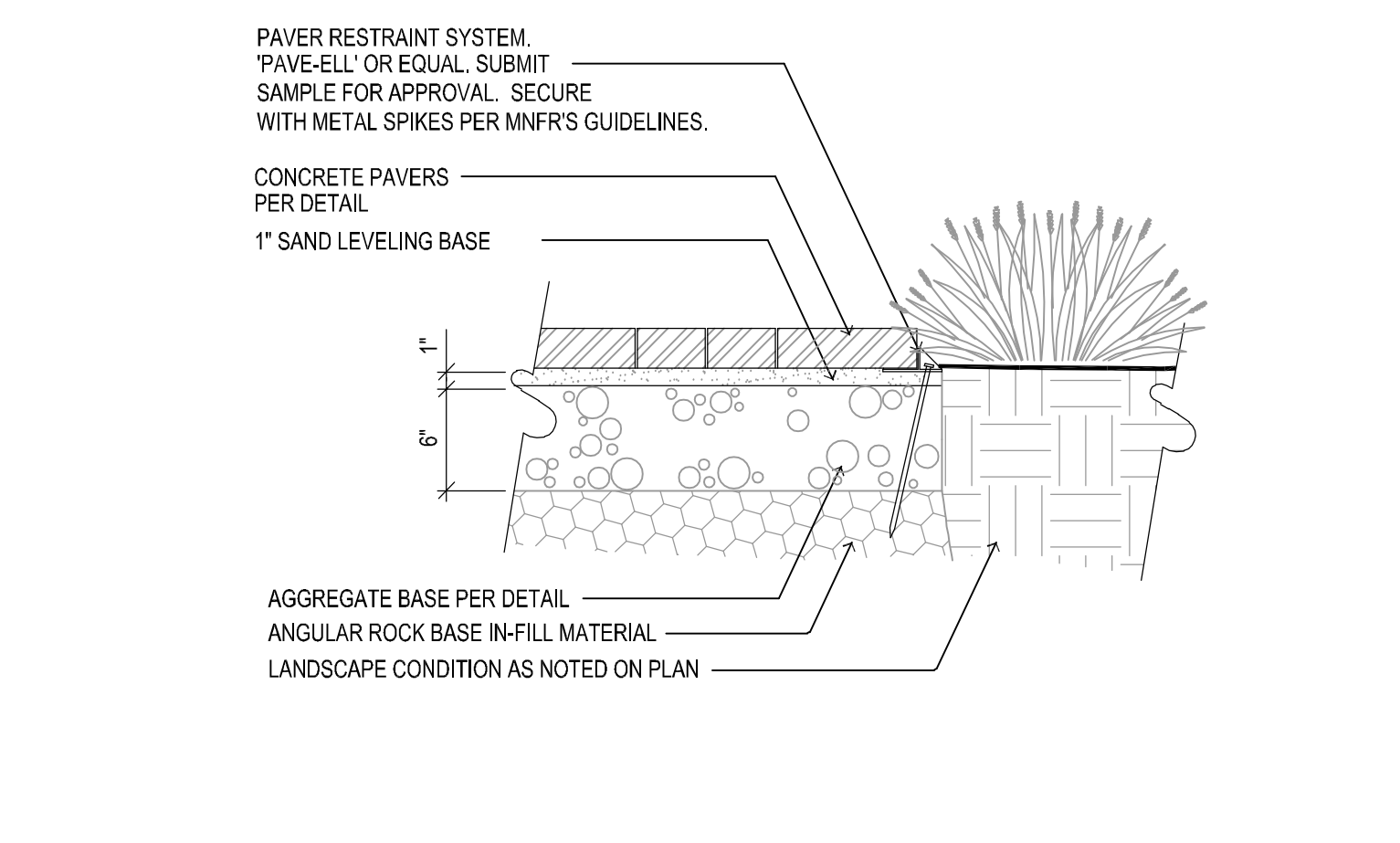
- Mulch: unless otherwise noted/indicated, plant beds shall receive 4" depth locally available 3/4" dia. limestone rock mulch, over weed mat. Submit mulch sample for Owner approval. Bryan Rock or Equal. Install rock mulch 1" below back of curbs or walks to prevent spill-over. Do not mound rock mulch. Coordinate finished grade condition with earthwork subcontractor. Where noted, wood mulch areas shall be 4" depth of single-shred hardwood mulch over fabric weed mat. Do not install weed mat under perennials, with the exception of ornamental grasses. Submit mulch sample for Owner approval
- All planting, seeding, and sodded areas shall be prepared prior to installation activities with a harley power box rake or equal to provide a firm planting bed free of stones, sticks, construction debris, etc. Unless otherwise noted, fine grading (within 4" of set grade) shall be by the Landscape Contractor, including topsoil.
- Turf Sodding activity shall conform to all rules and regulations as established in the MnDOT Seeding Manual, 2014 edition, for seed bed preparation, installation, maintenance, acceptability, and warranty.

- The Landscape Contractor shall furnish samples of all landscape materials for approval prior to installation.
- The Landscape Contractor shall clear and grub the underbrush from within the work limits to remove dead branches, leaves, trash, weeds and foreign materials.
- The landscape contractor shall contact Gopher State One Call no less than 48 hours before digging for field utility locations.
- The landscape contractor shall be responsible for the removal of erosion control measures once vegetation has been established to the satisfaction of the municipal staff. This includes silt curtain fencing and sediment logs placed in the landscape.
- The landscape contractor shall be responsible for visiting the site to become familiar with the conditions prior to bidding and installation. Coordinate with the general contractor on matters such as fine grading, landscaped area conditions, staging areas, irrigation connection to building, etc.
- See architectural site plan for additional information regarding the project, including sub-surface drainage requirements and performance.
- Topsoil Requirements: All graded areas of the site that are designated on the plan set for turf sod shall have no less than 6" of imported top soil, areas designated for shrubs, trees, and perennials shall have no less than 12" of imported top soil, meeting MnDOT classifications for planting soil for trees, shrubs, and turf. Slope away from building.

- Landscape contractor must prove the open sub-grade of all planting areas after their excavation is capable of infiltrating a minimum requirement of 1/4-inch of water per hour prior to installation of plant materials, topsoil, irrigation, weed mat, and mulch. Planting areas not capable of meeting this requirement shall have 4" diameter X 48" depth holes augered every 36" on-center and filled with MnDOT Free-Draining Coarse Filter Aggregate. Re-test sub-grade percolation for compliance to infiltration minimum requirement.
- Landscape contractor to provide nursery pool list (bill of lading) including plant species and sizes shipped to the site. Additionally, the landscape contractor shall provide nursery stock traceability, proving none of the materials provided contain or are genetic strains of the neonicotinoid family including acetamiprid, clothianidin, imidacloprid, nitenpyram, nithiazine, thiacloprid and thiamethoxam.
- Retaining wall engineering by others. Unless otherwise noted, retaining wall block to be County Materials Co., 'County Block', Split-Face in Buff. Submit engineered wall drawings to Civil Engineer for review and approval. Include cap blocks and pre-manufactured corner units of matching finish and color. Install per manufacturer's guidelines.



7 6' CEDAR PRIVACY FENCE DETAIL Bid As Alternate #6
NOT TO SCALE



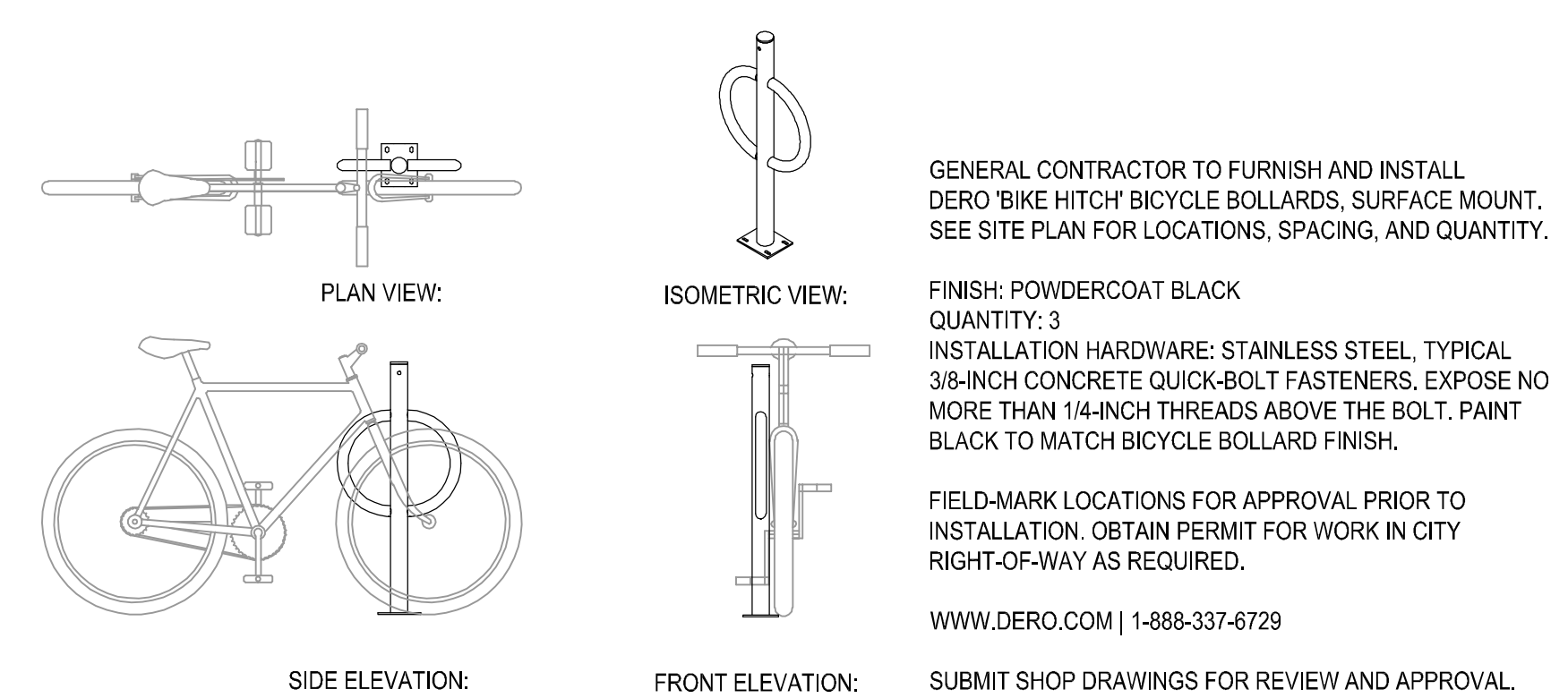
8 PAVER EDGE RESTRAINT DETAIL Bid As Alternate #5
NOT TO SCALE

Irrigation Performance Requirements:

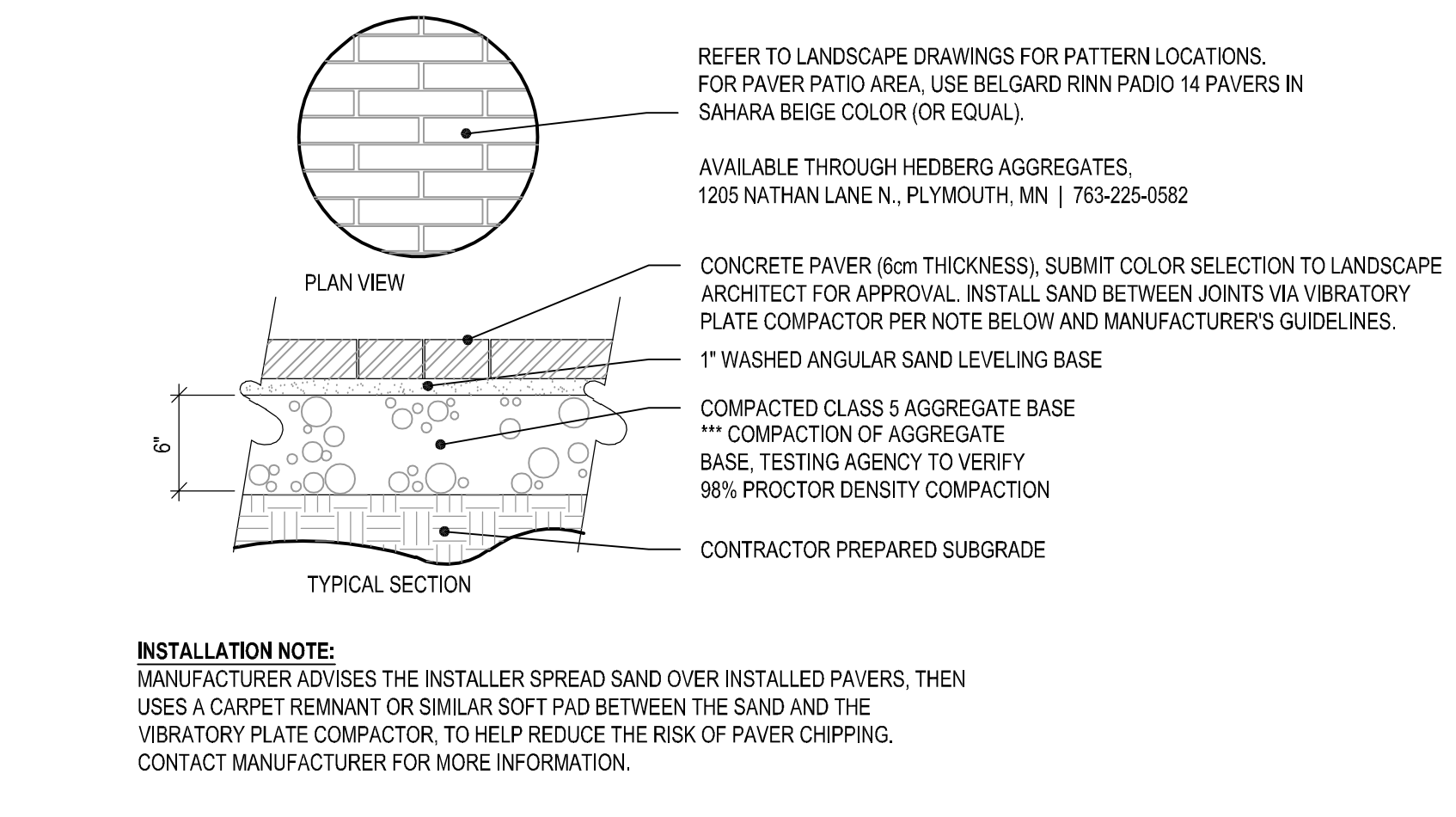
- IRRIGATION SYSTEM SHOULD AVERAGE 40(+/-) PSI AT THE BASE OF ALL SPRINKLER HEADS. NOTIFY LANDSCAPE ARCHITECT IF EXISTING PRESSURE DIFFERS. BUILDING PRESSURE IS NOT KNOWN.
- IRRIGATION CONTRACTOR TO PREPARE FULL IRRIGATION LAYOUT PLANS FOR LANDSCAPE ARCHITECT'S REVIEW. IRRIGATION SYSTEM TO BE HIGH-EFFICIENCY WITH DRIP AND STREAM ROTOR HEADS. LAYOUT WORK AS ACCURATELY AS POSSIBLE. THE CONTRACTOR MAY MAKE MINOR ADJUSTMENTS TO THE LOCATION AND SPACING AS NECESSARY TO ACCOMMODATE ACTUAL FIELD CONDITIONS. HEAD LOCATIONS SHALL BE FLAGGED AND REVIEWED BY THE LANDSCAPE ARCHITECT PRIOR TO INSTALLATION.
- COORDINATE SLEEVING AND IRRIGATION PIPE / HEAD / INTERNAL PLUMBING INSTALLATION WITH THE WORK OF OTHERS.
- ALL MATERIALS SHALL BE INSTALLED AS DETAILED ON DRAWINGS. (HOWEVER, IF THE CONTRACT DRAWINGS AND/OR SPECIFICATIONS DO NOT THOROUGHLY DESCRIBE THE METHOD OR TECHNIQUES TO BE USED, THE CONTRACTOR SHALL FOLLOW THE INSTALLATION METHODS ISSUED BY THE MANUFACTURER. ALL SUCH LITERATURE MUST BE SUBMITTED 48 HOURS PRIOR TO INSTALLATION FOR REVIEW AND APPROVAL BY THE LANDSCAPE ARCHITECT.)
- CHECK AND VERIFY ALL EXISTING AND PROPOSED SITE CONDITIONS, UTILITIES, AND SERVICES PRIOR TO TRENCHING.
- LATERAL PIPING TO BE A MINIMUM OF 12 INCHES DEEP AND MAINLINES A MINIMUM OF 18 INCHES DEEP.
- ALL MAIN LINE PIPING AND LATERAL PIPE OF 1-1/2" AND LARGER SHALL BE PVC (SDR 26 / CLASS 160), HOWEVER THE IRRIGATION FEED FROM THE BUILDING INTO THE LANDSCAPE SHALL BE COPPER. ALL OTHER LATERAL PIPE OF 1-1/4" AND SMALLER MAY BE POLYETHYLENE.
- ALL TEES AND ELBOWS SHALL BE PVC (160 PSI), INCLUDE THRUST BLOCKING AT TEE AND ELBOW POINTS.
- ALL SPRINKLERS SHALL BE HIGH EFFICIENCY - NO FAN SPRAY OR BUBBLER HEADS.
- ADJUST HEADS FOR GRADE, AS NECESSARY. AFTER TURF GRASS HAS BEEN ESTABLISHED AND ALL SETTLEMENT AT HEADS HAS OCCURRED.
- ALL AUTOMATIC CONTROLLERS, RISERS, BACKFLOW PREVENTERS AND HOSE BIBS SHALL BE SET PLUMB. SPRINKLER HEAD RISERS, QUICK COUPLER VALVES AND ALL VALVES WITH STEMS SHALL BE SET PERPENDICULAR TO FINISHED GRADE.
- CONTROL VALVE WIRES, INCLUDING THE GROUND WIRE, SHALL BE #12 GAUGE U.F.U.L. APPROVED DIRECT BURIAL. UNDERGROUND CONNECTIONS SHALL BE MADE WITH 3-M WIRE CONNECTORS (DBY) OR APPROVED EQUAL.
- TRACER-WIRE IS TO BE PLACED OVER ALL MAIN AND LATERAL LINES.
- PLACE ALL VALVES IN APPROVED VALVE BOXES.
- USE TEFLON TAPE ON ALL THREADED JOINTS.
- BRAND EACH VALVE BOX WITH 2" HIGH LETTERING SHOWING ZONE NUMBER AND CONTROLLER LETTER (EXAMPLE 'A3'). THIS STAMP IS TO MATCH THE ZONE SHOWN ON THE PLAN UNLESS OTHERWISE DIRECTED BY LANDSCAPE ARCHITECT.
- CONDUCT PERFORMANCE TEST IN THE PRESENCE OF OWNER AND LANDSCAPE ARCHITECT FOLLOWING COMPLETION OF SYSTEM INSTALLATION.
- CONDUCT AND DEMONSTRATE WINTERIZATION AND SPRING START-UP PROCESS TO OWNER IN THE FALL OF COMPLETION.
- LANDSCAPE ARCHITECT SHALL BE NOTIFIED TO VERIFY TRENCH DEPTHS BEFORE BACKFILLING.
- IRRIGATION CONTRACTOR TO COORDINATE MECHANICAL ROOM WATER CONNECTION POINT WITH MECHANICAL ENGINEER AND PLUMBING CONTRACTOR.
- AFTER INSTALLATION OF DRIP IRRIGATION PIPE IS COMPLETE AND PRIOR TO SODDING OR MULCH INSTALLATION, THE CONTRACTOR SHALL CONTACT THE LANDSCAPE ARCHITECT TO REVIEW THE INSTALLATION OF THE DRIP IRRIGATION SYSTEM.
- LANDSCAPE CONTRACTOR TO ADJUST HEADS IN THE FIELD TO ENSURE WATER DOES NOT SPRAY THE BUILDING FACE OR PAVED AREAS.
- COORDINATE LOCATION OF ROOFTOP-MOUNTED ATMOSPHERIC MOISTURE (RAIN) SENSOR WITH OWNER AND ARCHITECT.
- COORDINATE LOCATION OF SLEEVING UNDER PAVED AREAS WITH GENERAL CONTRACTOR, EARTHWORK, AND PAVING SUB-CONTRACTORS.
- SUBMIT LAYOUT PLAN AND PRODUCT DATA TO THE LANDSCAPE ARCHITECT FOR REVIEW AND APPROVAL PRIOR TO INSTALLATION.
- IRRIGATION BID SHALL INCLUDE (1) FALL SHUT-DOWN AND (1) SPRING START-UP (SPRING OF THE YEAR FOLLOWING INSTALLATION).
- THIS PROJECT WILL USE HUNTER COMMERCIAL IRRIGATION PRODUCTS.
- PROVIDE THE OWNER WITH MANUFACTURER'S INSTRUCTION MANUAL FOR CONTROLLER. POST IRRIGATION ZONE LAYOUT MAP AT 8"x10" NEXT TO THE CONTROLLER FOR REFERENCE.
- PROVIDE THE OWNER WITH AN AS-BUILT PLAN (PAPER AND CAD .DWG) UPON COMPLETION OF INSTALLATION.

General Notes:

- The removal, pruning, and/or planting of trees in the public boulevard requires an approved permit from the City Forester's Office. Any work must be completed by a licensed tree contractor.
- See Civil Engineer's plans for site plan layout and dimensions.
- Contractor to coordinate any work in the city right-of-way with City of Owatonna Public Works Department.
- Expose root flare and set at-grade.
- The contractor is responsible to maintain trees in a plumb position throughout the maintenance period.
- Remove the burlap and ropes from the top 1/3 of the root ball, cut wire basket down to the second horizontal wire from the bottom, and dispose of off-site.
- Refer to Sheet L101 for Base Bid Landscape Layout Plan.
- Refer to Sheet L103 for Alt Bid Landscape Layout Plan.



9 BICYCLE BOLLARD DETAIL
NOT TO SCALE



10 UNIT PAVER INSTALLATION DETAIL Bid As Alternate #5
NOT TO SCALE



322 1st Avenue N., Suite #600
Minneapolis, MN 55401
phone 612.746.4260
facsimile 612.746.4754
www.jlgarchitects.com
copyright © 2020

PRELIMINARY
NOT FOR CONSTRUCTION

CALYX
DESIGN GROUP
Landscape Architecture
Planning
475 N. Cleveland Avenue | Suite 101A
Saint Paul, MN 55104
651.768.9018 | calyxdesigngroup.com

REVISION SCHEDULE		
NO.	DESCRIPTION	DATE

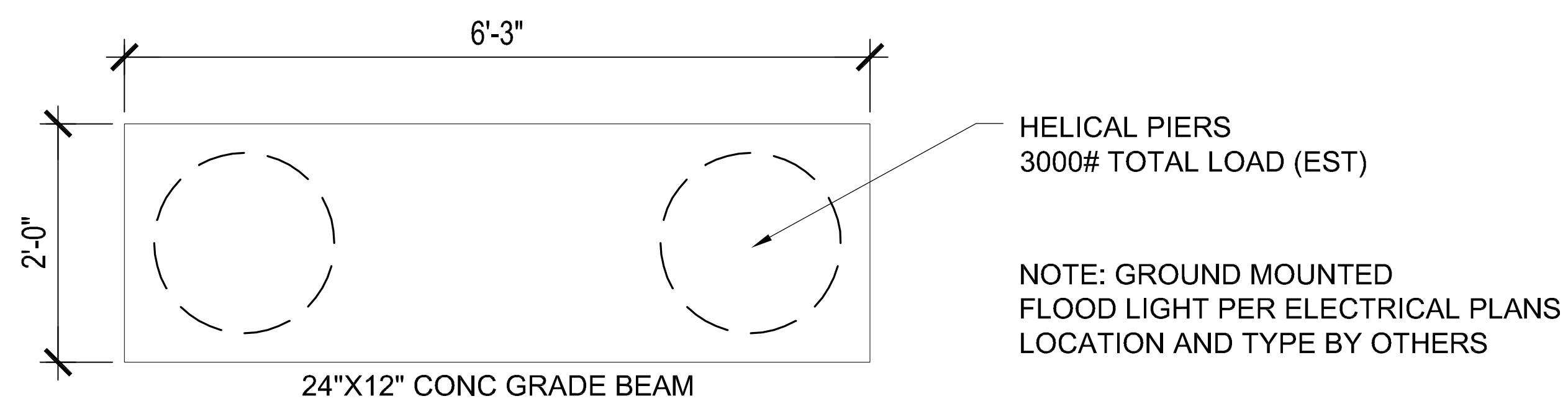
LWO DEVELOPMENT, LLC
EASTGATE APARTMENTS
OWATONNA, MN

DATE
06/19/2020
PHASE
CONSTRUCTION
DOCUMENTS
PROJECT
18126
SHEET

L102
LANDSCAPE
DETAILS



CONTRACTORS ARE RESPONSIBLE FOR OBTAINING UTILITY LOCATES. INCLUDE PRIVATE UTILITIES SUCH AS PHONE AND CABLE. CALL NO LESS THAN 48 HOURS IN ADVANCE.

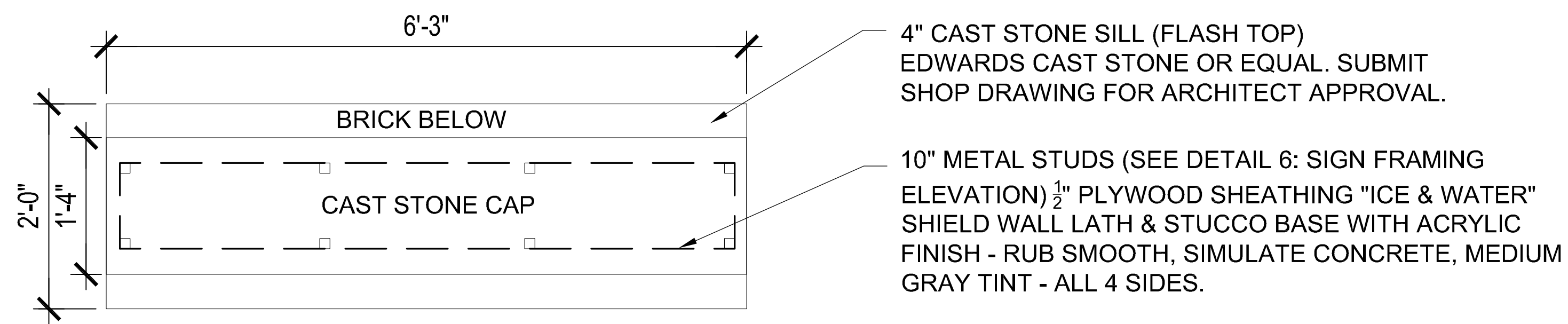


HELICAL PIERS
3000# TOTAL LOAD (EST)

NOTE: GROUND MOUNTED
FLOOD LIGHT PER ELECTRICAL PLANS
LOCATION AND TYPE BY OTHERS

24"X12" CONC GRADE BEAM

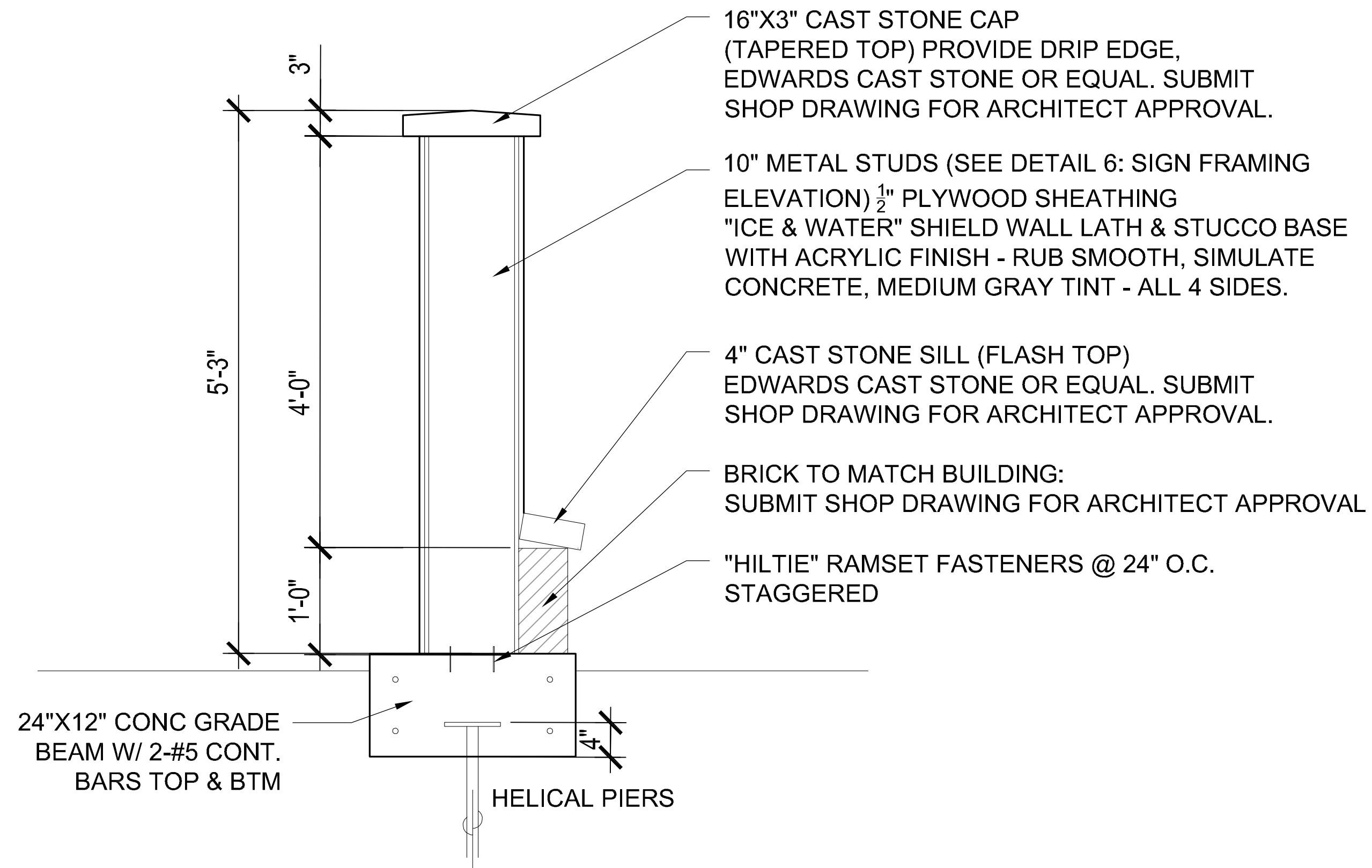
1 FOOTING PLAN
SCALE: 1" = 1'-0"



4" CAST STONE SILL (FLASH TOP)
EDWARDS CAST STONE OR EQUAL. SUBMIT
SHOP DRAWING FOR ARCHITECT APPROVAL.

10" METAL STUDS (SEE DETAIL 6: SIGN FRAMING
ELEVATION) 1/2" PLYWOOD SHEATHING "ICE & WATER"
SHIELD WALL LATH & STUCCO BASE WITH ACRYLIC
FINISH - RUB SMOOTH, SIMULATE CONCRETE, MEDIUM
GRAY TINT - ALL 4 SIDES.

2 FRAMING PLAN
SCALE: 1" = 1'-0"



16"X3" CAST STONE CAP
(TAPERED TOP) PROVIDE DRIP EDGE,
EDWARDS CAST STONE OR EQUAL. SUBMIT
SHOP DRAWING FOR ARCHITECT APPROVAL.

10" METAL STUDS (SEE DETAIL 6: SIGN FRAMING
ELEVATION) 1/2" PLYWOOD SHEATHING
"ICE & WATER" SHIELD WALL LATH & STUCCO BASE
WITH ACRYLIC FINISH - RUB SMOOTH, SIMULATE
CONCRETE, MEDIUM GRAY TINT - ALL 4 SIDES.

4" CAST STONE SILL (FLASH TOP)
EDWARDS CAST STONE OR EQUAL. SUBMIT
SHOP DRAWING FOR ARCHITECT APPROVAL.

BRICK TO MATCH BUILDING:
SUBMIT SHOP DRAWING FOR ARCHITECT APPROVAL

"HILTIE" RAMSET FASTENERS @ 24" O.C.
STAGGERED

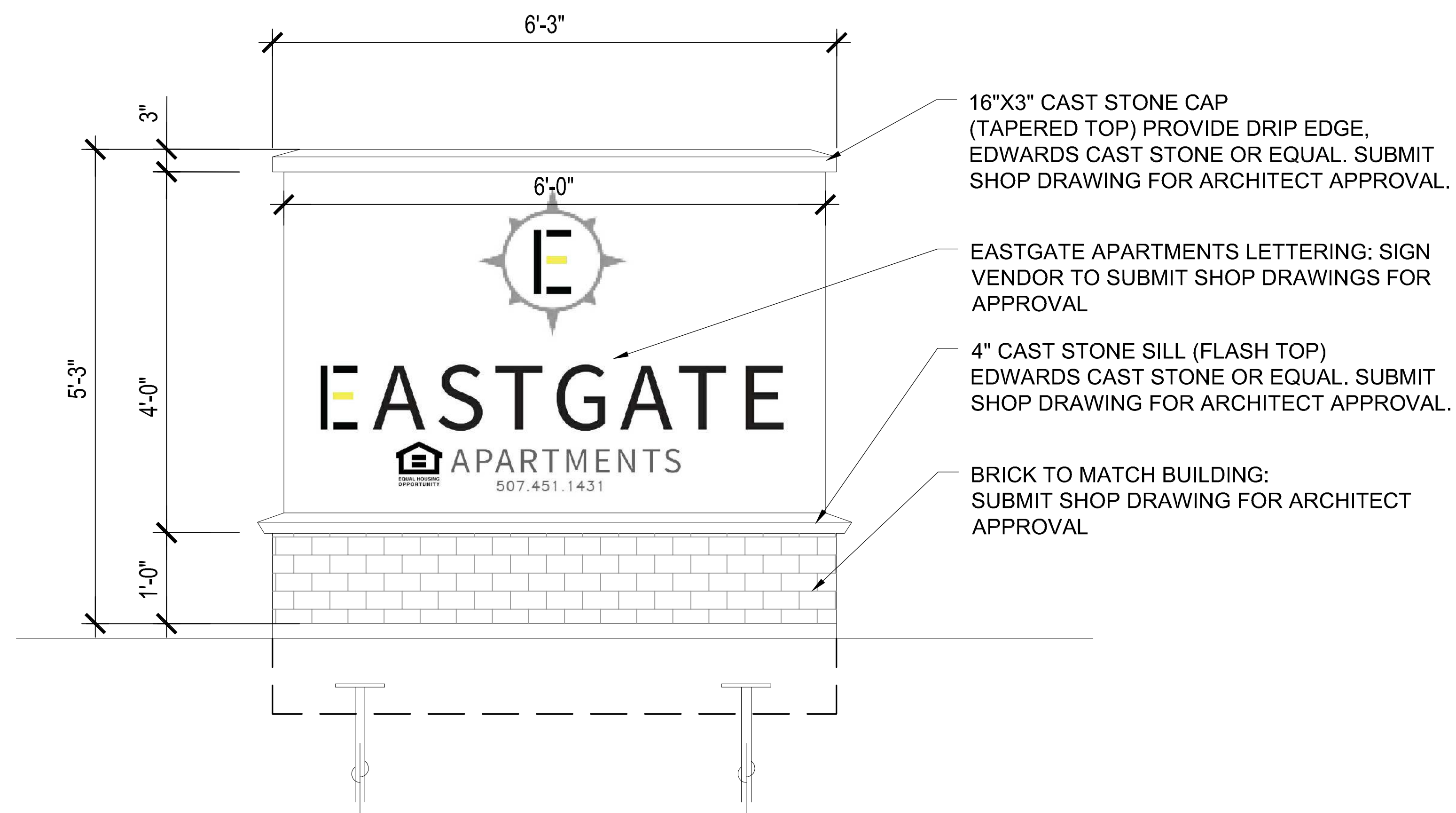
24"X12" CONC GRADE
BEAM W/ 2-#5 CONT.
BARS TOP & BTM

HELICAL PIERS

3 WALL SECTION
SCALE: 1" = 1'-0"

General Notes:

1. The removal, pruning, and/or planting of trees in the public boulevard requires an approved permit from the City Forester's Office. Any work must be completed by a licensed tree contractor.
2. See Civil Engineer's plans for site plan layout and dimensions.
3. Contractor to coordinate any work in the city right-of-way with City of Owatonna Public Works Department.
4. Expose root flare and set at-grade.
5. The contractor is responsible to maintain trees in a plumb position throughout the maintenance period.
6. Remove the burlap and ropes from the top 1/3 of the root ball, cut wire basket down to the second horizontal wire from the bottom, and dispose of off-site.
7. Refer to Sheet L101 for Landscape Base Bid Plant Materials Layout and Plant List.
8. Refer to Sheet L102 for Landscape Details, Notes, & Schedules.
9. Refer to Sheet L103 for Alt Bid Landscape Layout Plan.



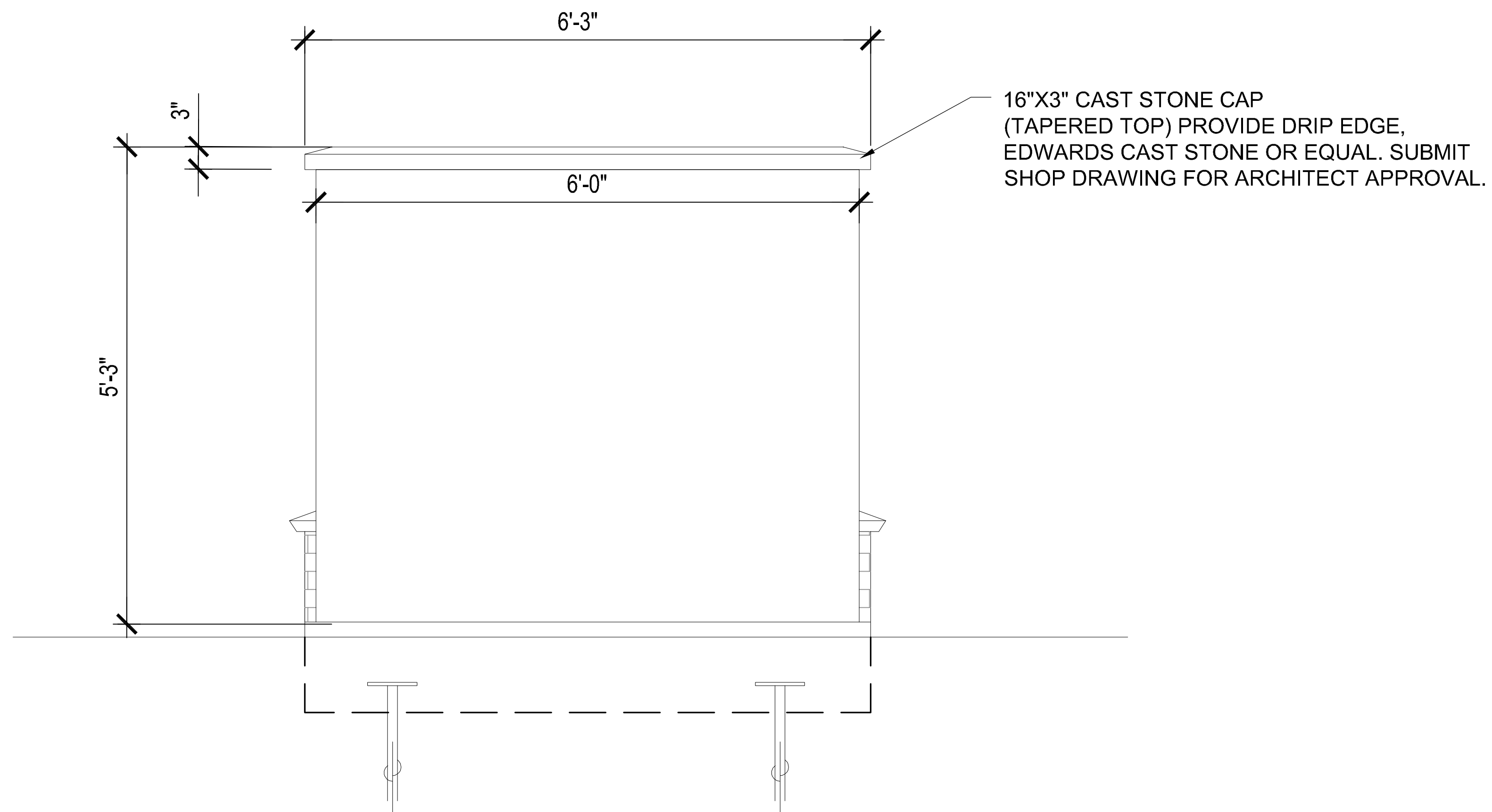
16"X3" CAST STONE CAP
(TAPERED TOP) PROVIDE DRIP EDGE,
EDWARDS CAST STONE OR EQUAL. SUBMIT
SHOP DRAWING FOR ARCHITECT APPROVAL.

EASTGATE APARTMENTS LETTERING: SIGN
VENDOR TO SUBMIT SHOP DRAWINGS FOR
APPROVAL

4" CAST STONE SILL (FLASH TOP)
EDWARDS CAST STONE OR EQUAL. SUBMIT
SHOP DRAWING FOR ARCHITECT APPROVAL.

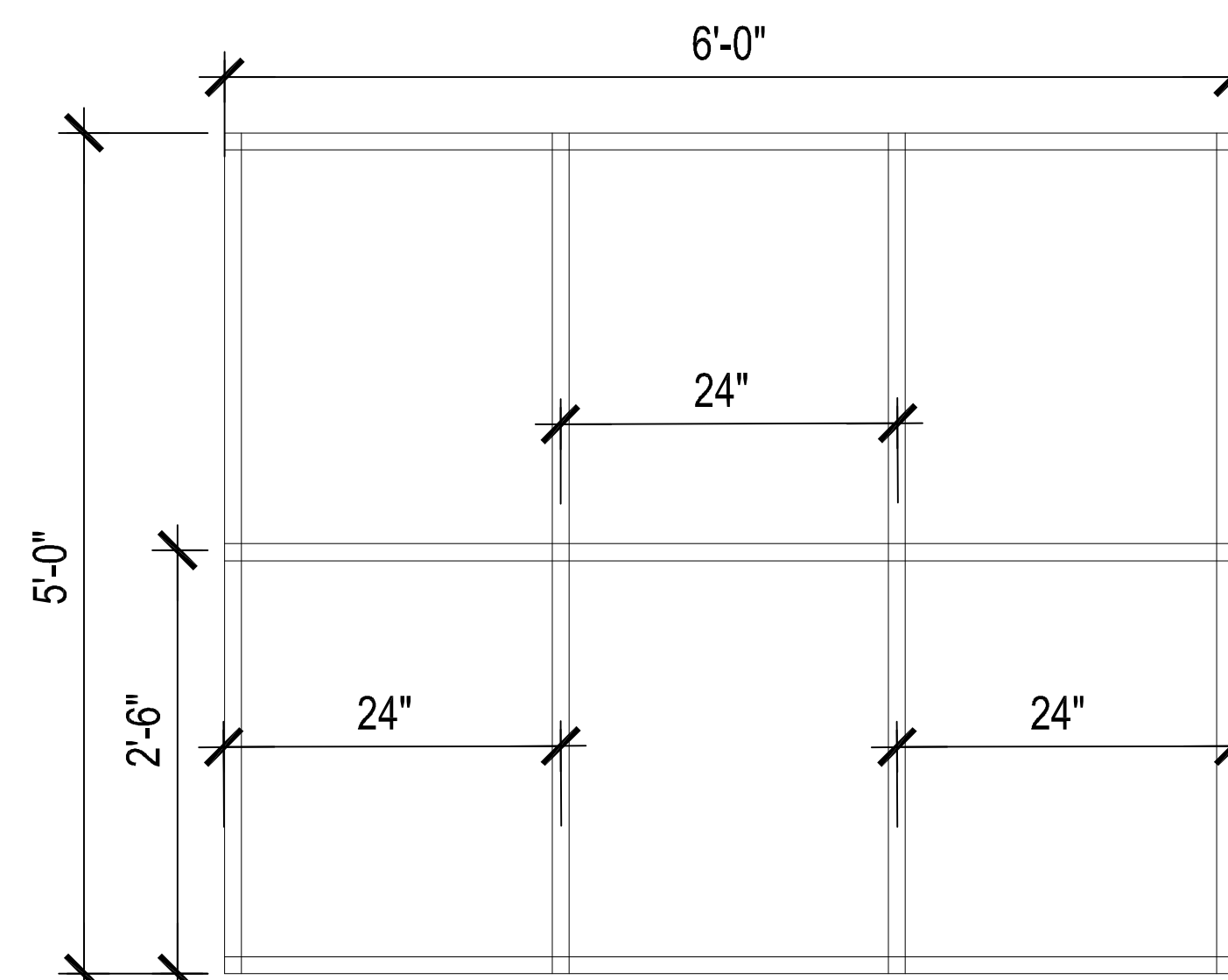
BRICK TO MATCH BUILDING:
SUBMIT SHOP DRAWING FOR ARCHITECT
APPROVAL

4 SIGN ELEVATION FACING STREET
SCALE: 1" = 1'-0"

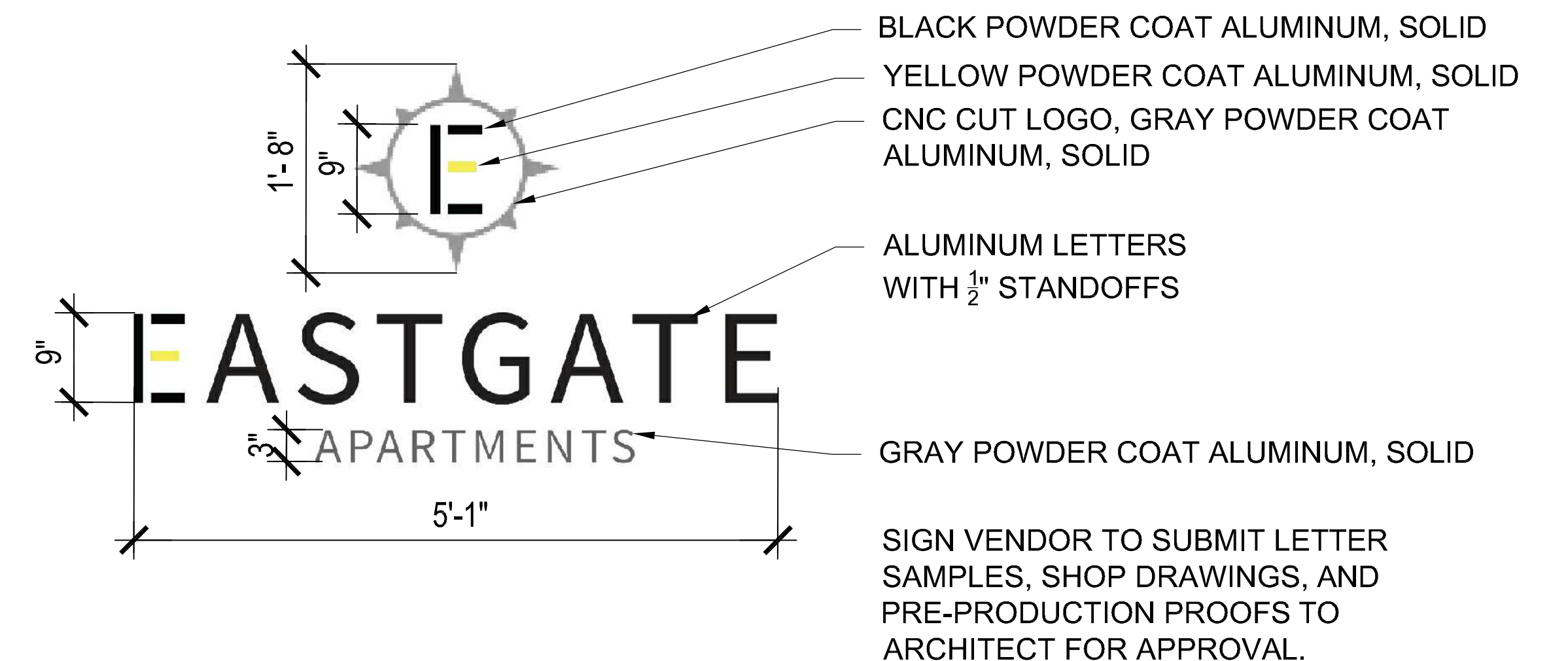


16"X3" CAST STONE CAP
(TAPERED TOP) PROVIDE DRIP EDGE,
EDWARDS CAST STONE OR EQUAL. SUBMIT
SHOP DRAWING FOR ARCHITECT APPROVAL.

5 SIGN ELEVATION FACING PARKING LOT
SCALE: 1" = 1'-0"



6 SIGN FRAMING ELEVATION
SCALE: 1" = 1'-0"



BLACK POWDER COAT ALUMINUM, SOLID
YELLOW POWDER COAT ALUMINUM, SOLID
CNC CUT LOGO, GRAY POWDER COAT
ALUMINUM, SOLID

ALUMINUM LETTERS
WITH 1/2" STANDOFFS

GRAY POWDER COAT ALUMINUM, SOLID

SIGN VENDOR TO SUBMIT LETTER
SAMPLES, SHOP DRAWINGS, AND
PRE-PRODUCTION PROOFS TO
ARCHITECT FOR APPROVAL.

7 SIGN LETTERING & LOGO
SCALE: 1" = 1'-0"



CONTRACTORS ARE RESPONSIBLE
FOR OBTAINING UTILITY LOCATES.
INCLUDE PRIVATE UTILITIES SUCH AS
PHONE AND CABLE. CALL NO LESS
THAN 48 HOURS IN ADVANCE.

REVISION SCHEDULE

NO.	DESCRIPTION	DATE